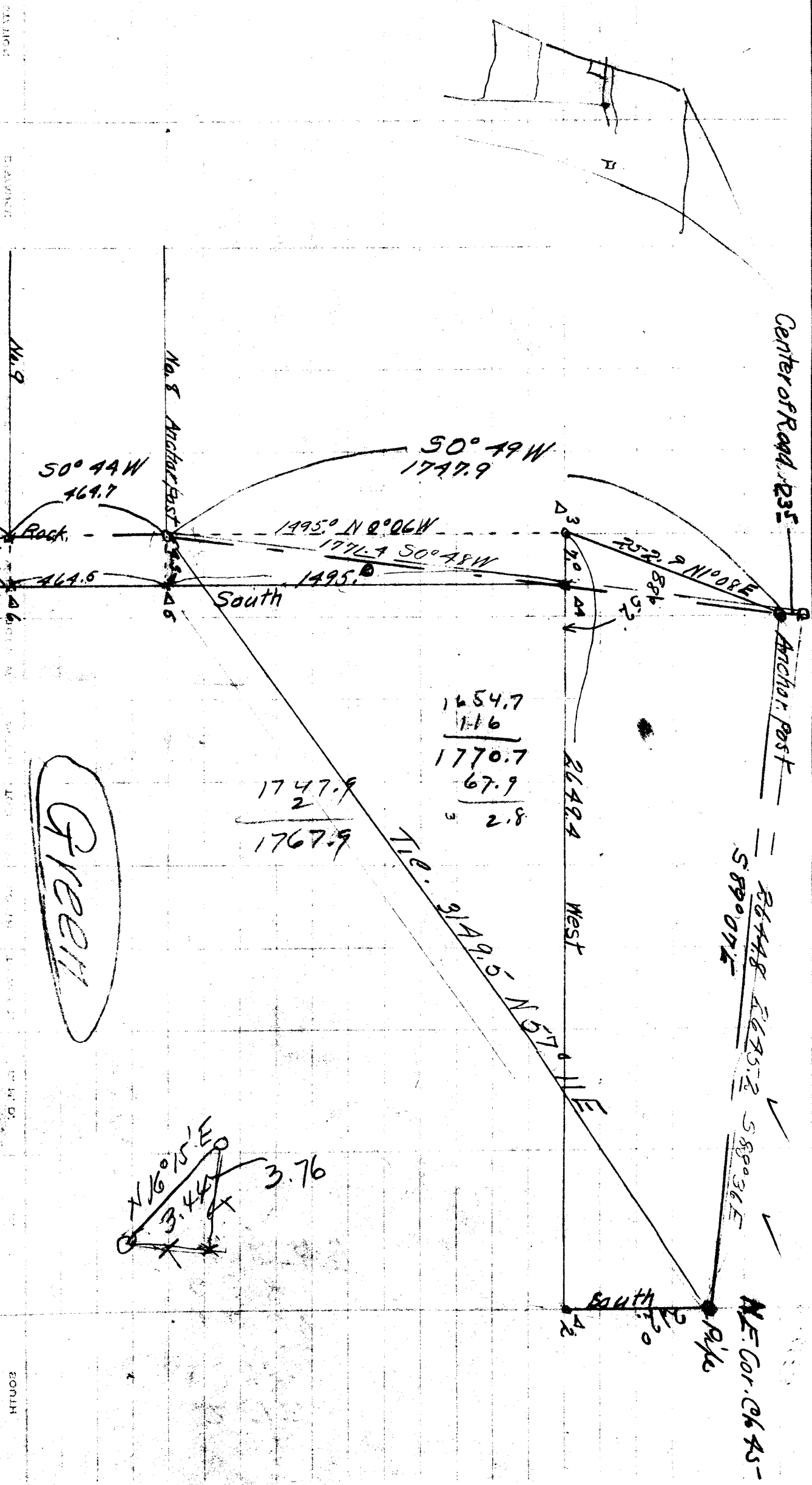


Map of Oregon Co.
 No. 10
 Life 21-12

No. 10

HOSEBEC OF OREGON
 CIVIL ENGINEER
 G. HICKS

Date _____
 Operated by _____
 Containing _____
 101



HTU02

STATION

STATION

STATION

STATION

STATION

STATION

STATION

STATION

See diag ^{10th}

L. G. NICKS
CIVIL ENGINEER
ROSEBURG, OREGON

Calculated by W. J. Berry
Checked by _____
Date _____

STATION	DISTANCE	BEARING	EAST	TOTAL EAST	WEST	TOTAL WEST	NORTH	TOTAL NORTH	SOUTH	TOTAL SOUTH	D. M. D.	NORTH	SOUTH
	1.80	EAST	7.0										
	1495.0	SOUTH							1495.0				
	4.5	WEST			4.5								
	1498.0	N0°06'W	7.0		2.5		1495.0		1495.0				
Anchor post clear in road to Anchor post #8													
	258.9	S10°08'W				5.0			258.8				
	1495.0	S0°06'E	2.5						1495.0				
	1447.9	N0°08'E	2.5				1447.8		1747.8				
			5.0										
Anchor post #8 to Rock #9													
	2.5	EAST	2.5										
	464.5	SOUTH							464.5				
	10.9	WEST			10.9								
	464.7	N0°44'E	5.9				464.5		464.5				
			10.4				464.5		464.5				

Greer

1 of 1

Traverse Notes for Calculation for Tie from NE Corner of Road to Center of Road NW Corner of 45

L. G. HICKS
CIVIL ENGINEER

Calculated by W. H. H. H.
Checked by _____
Date _____ 191

STATION	DISTANCE	BEARING	EAST	TOTAL EAST	WEST	TOTAL WEST	NORTH	TOTAL NTH	SOUTH	TOTAL STH	D. M. D.	NORTH	SOUTH
	2644.8	N 89° 02' 00" W			2644.5		46.8						
	23.5	North			2644.5		23.5						
	2645.2	S 88° 08' 00" E	2644.8						64.6				
			2644.8		2644.5		64.3		64.6				
	Center of road to Another post # 8												
	1747.9	N 0° 49' 00" E	24.9				1747.7						
	23.5	North	24.9				23.5						
	1771.4	S 0° 48' 00" W			24.7		1771.2			1771.2			

mark over X

File under Green

Page 1 of Sept 1909

Traverse Notes for Allie F. Castle Tract

L. G. HICKS
CIVIL ENGINEER
ROSEBURG, OREGON

Calculated by L. G. Hicks
Checked by H. Hicks
Date 191

STATION	DISTANCE	BEARING	EAST	TOTAL EAST	WEST	TOTAL WEST	NORTH	TOTAL NORTH	SOUTH	TOTAL SOUTH	D. M. D.	NORTH	SOUTH
2-3-11	1820.0	West			1820.0								
	2773.0	South							2773.0				
	2735.0	East	2735.0										
	1500.0	North					1500.0						
	546.0	East	546.0										
	1050.0	North					1050.0						
	1883.0	West			1883.0								
			3281.0				3203.0		2550.0			2973.0	
			3703.0						1550.0				
			78.0						223.0				

Buy Hartford

File under Green

By Boyer

Page 1 of 1

Traverse Notes for Rabbit Green tract

L. G. HICKS
CIVIL ENGINEER
ROSEBURG, OREGON

Calculated by Wilbey
Checked by _____
Date April

191

STATION	DISTANCE	BEARING	EAST	TOTAL EAST	WEST	TOTAL WEST	NORTH	TOTAL NORTH	SOUTH	TOTAL SOUTH	D. M. D.	NORTH	SOUTH
1254.7 SOUTH OF NW Cor. Bester Cr. 448	116.0	SOUTH							116.0				
	374.0	N89°44'W			374.0		1.7						
<u>Supposed to</u>	468.0	S70°30'E	61.1						464.0				
<u>Containing 21.68 Ac</u>	310.1	S89°49'E	310.1						1.0				
	484.5	SOUTH							484.5				
	785.0	S88°39'E	784.8						18.5				
	785.0	N17°03'E	230.2				750.5						
	719.2	N84°43'W			716.1		66.2						
	257.5	N40°22'W			19.6		256.8						
	276.7	N88°09'W			276.6		8.9						
			1386.2		1386.3		1084.1		1084.0				
	1654.7												
	116												
	1770.7												

CS FILE FOLDER

CONTAINS

MORE

INFORMATION