

Loon Lake

Clear Lake
 to Soda Lake
 Pot Lake
 Little Pot Lake

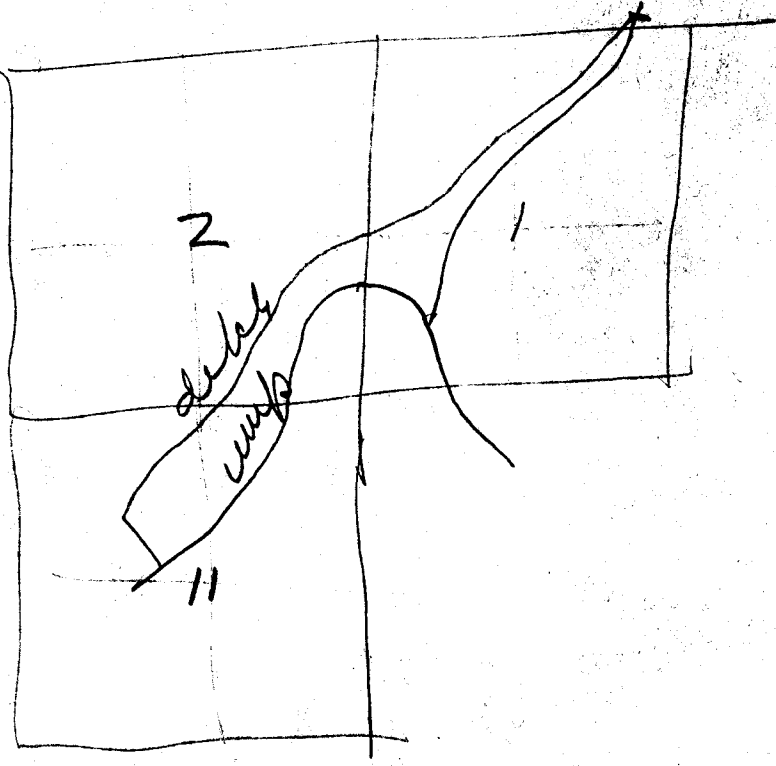
} pipe line to N side
Cove Bay

Loon Lake 8000 mms wide
 Dam 6 foot
 Ditch 4 ft per mile 4.5 ft of walls
 8 feet wide at bottom 8 feet wide
 at water line

Rock Creek

3000 Acre Leases

Now is 10 chs west and .05 chs north
of sec 1 T-25-S R-3-W



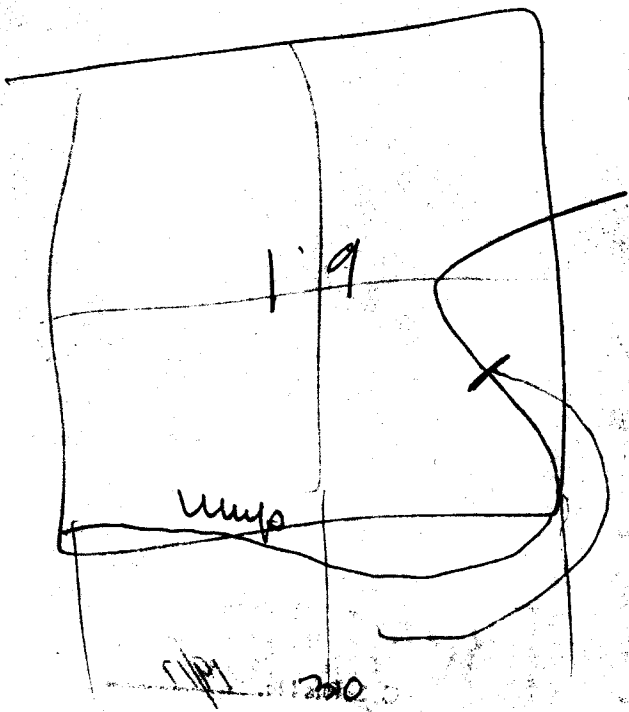
North Ump River

Sec 19

cont to 1920 29-30

S 45° E

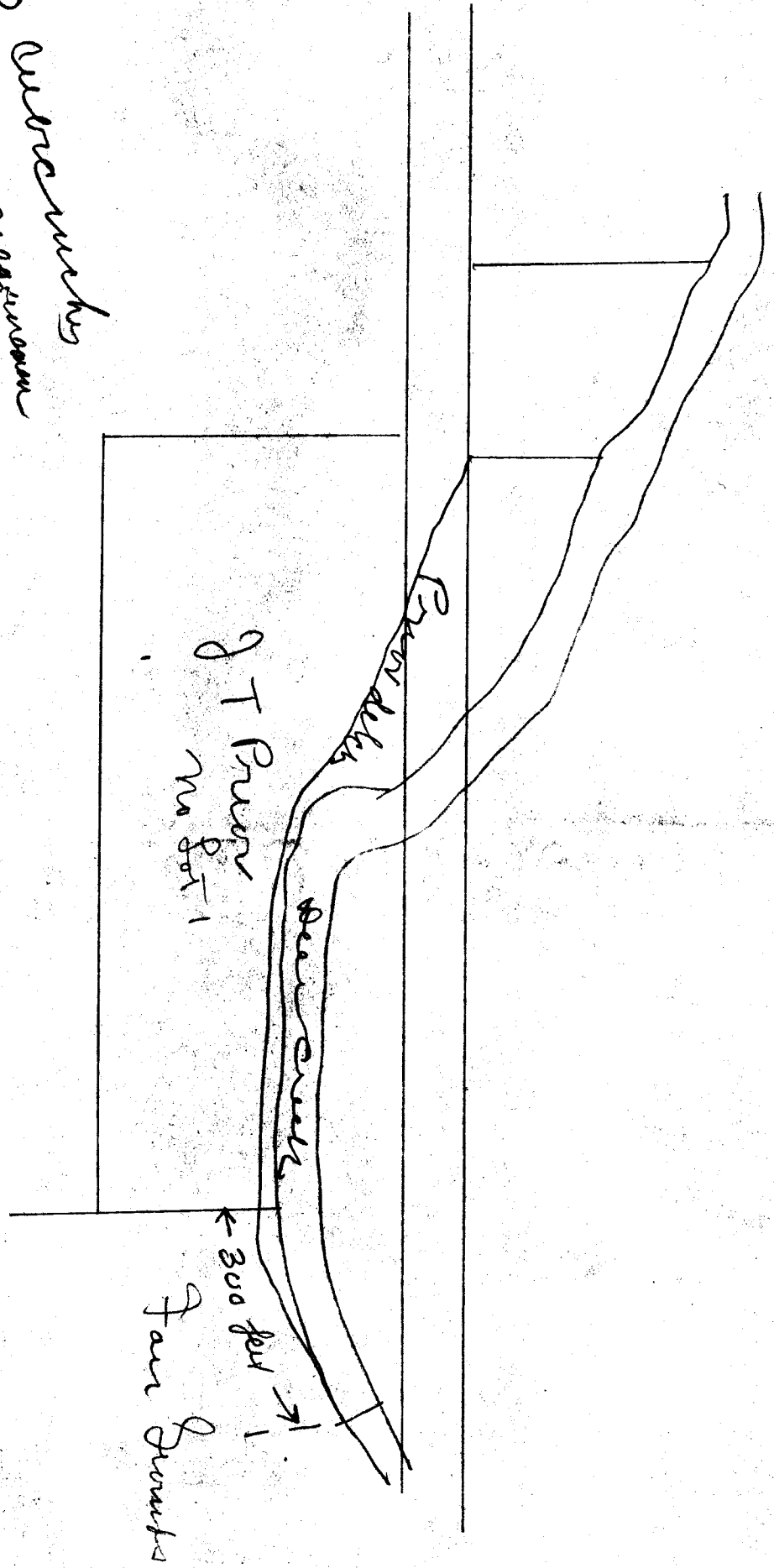
20 chs



T-26-S R-5-W

1/19 200

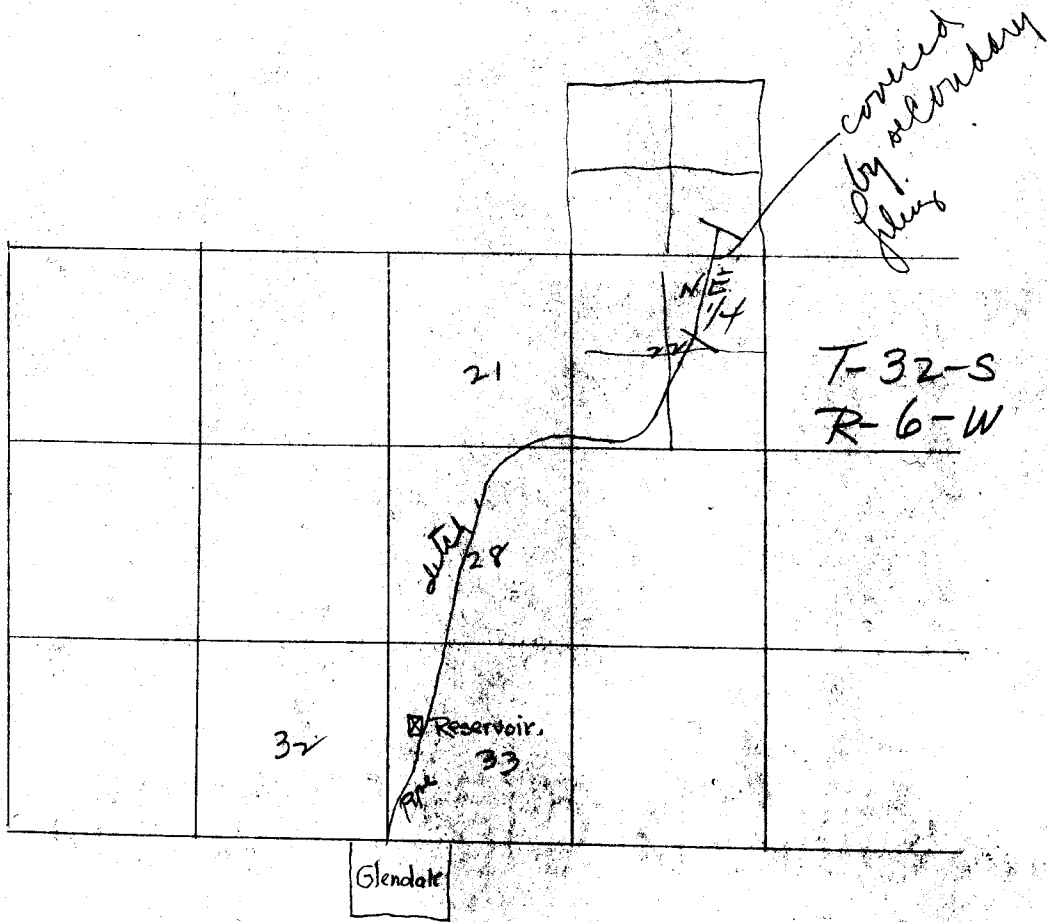
24500 acres nearly
grown
Jan 12 - 1908



Windy Creek

Glendale Canal and City Water Works

250 minor leaks under 6 inch pressure
from N. Fork Windy Creek



Filed Oct 24-1904

W. P. Reed

1000 inches

Clear Lake, Douglas Co Ore

for Reed sport

Division

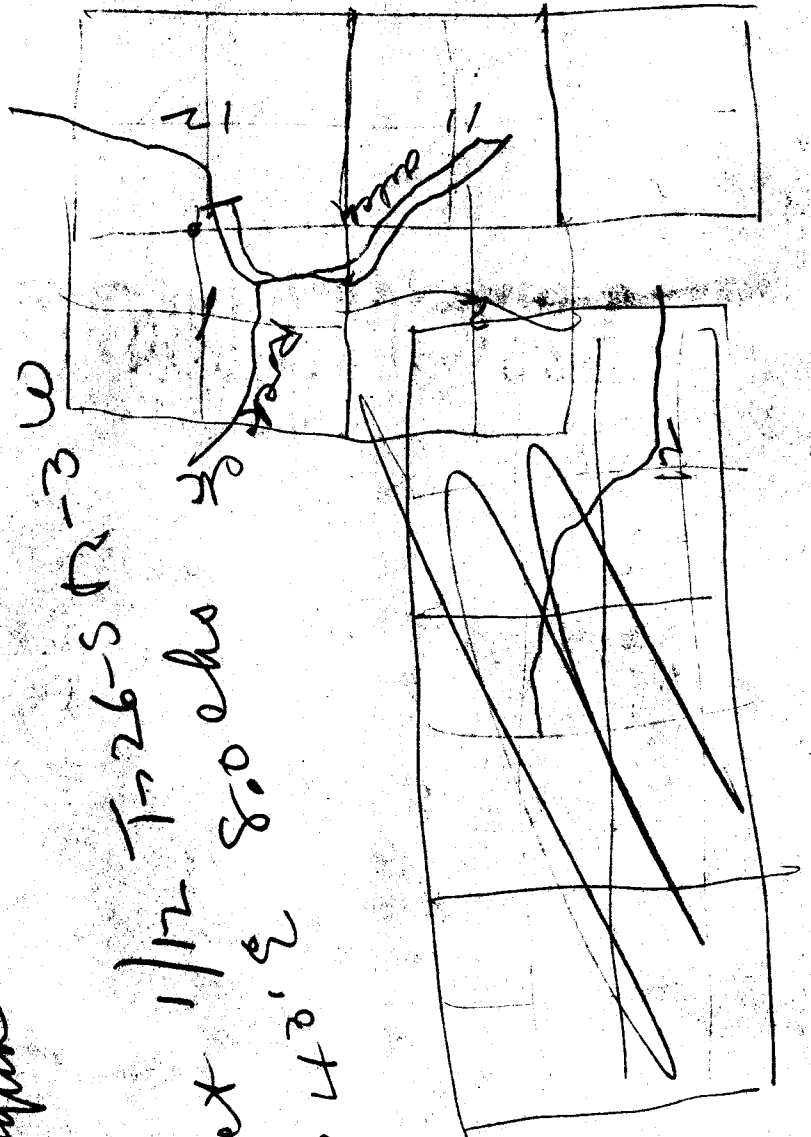
W Lot 5 Sec 19 T-22-S R-12-W

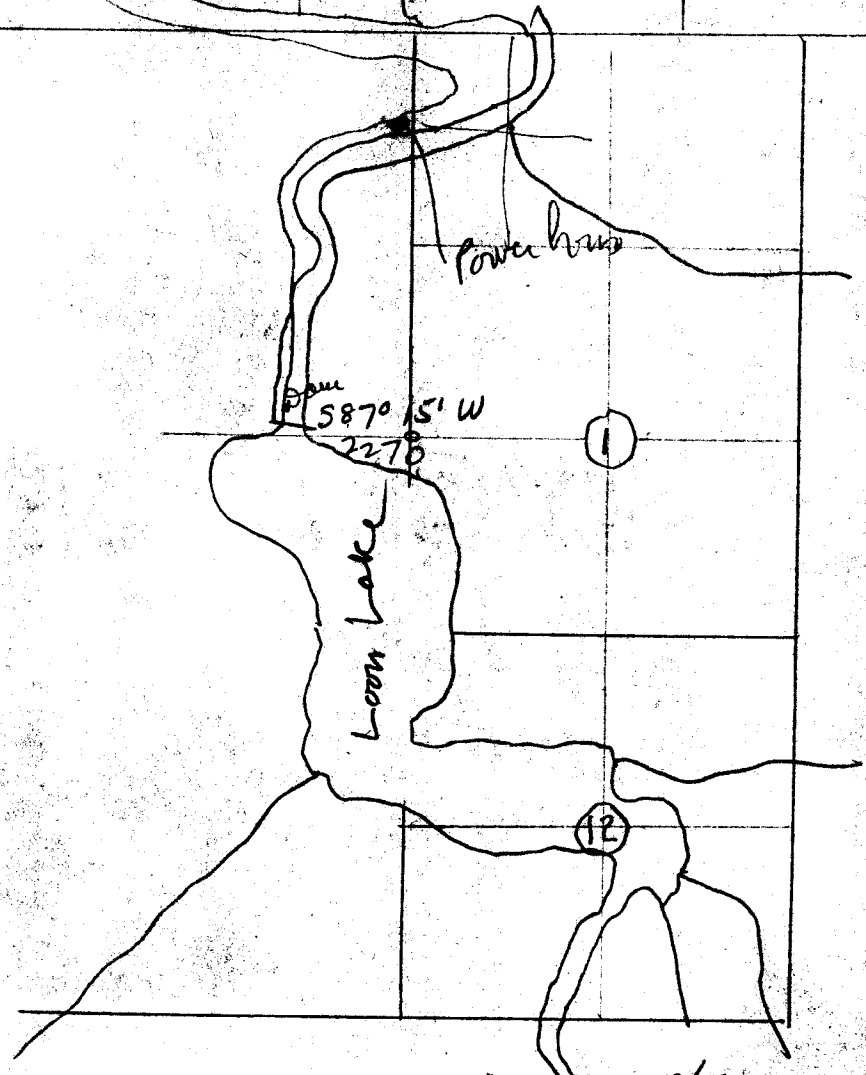
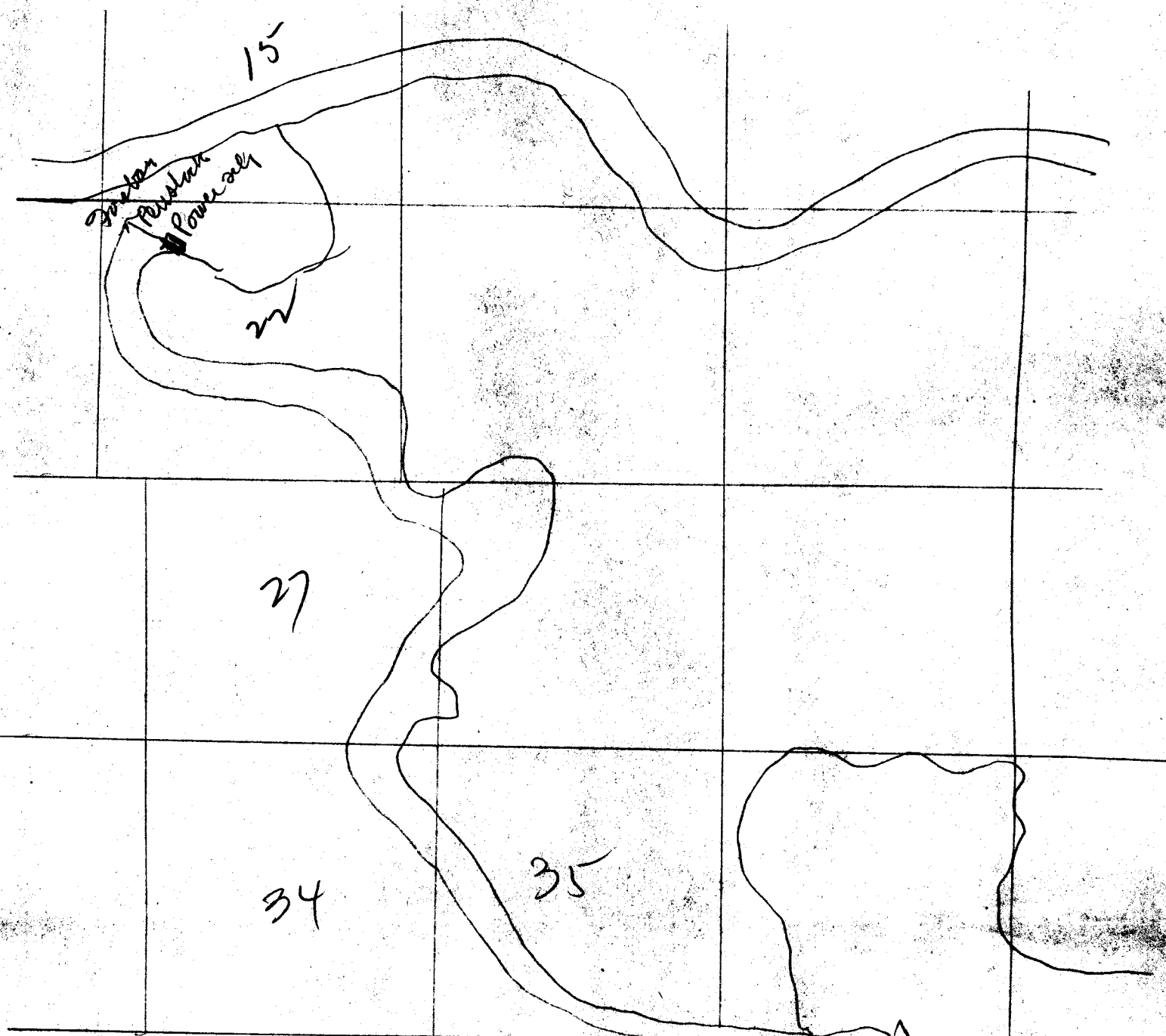
8 mile pipe line

40 foot lead
3000 feet 10 874 A.P
30 foot dam above low
water mark
Sec 9-10 T-23-S R-7-W

7000 inches
N Wumpqua

Point of view 1/12 T-26-S R-3 W
800 chs 2/3
1/4 sec cor bet 2
Sec 10 N 60 4 3/4 E





T. H. Foster

Odell Creek Ditch

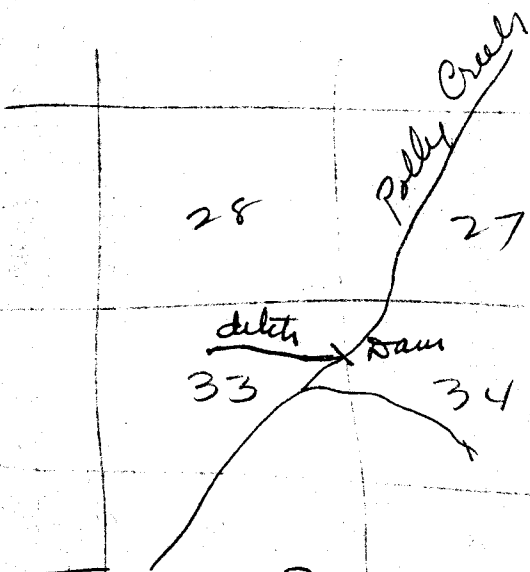
all water from Odell (Foster Cuts) creek

Page 5. Notice of App of water

Feb 19 - 1905

Filed Feb 9 (19) 1905

Whistlers have
 at sea 18
 700 foot tunnel



T-24-S
 R-5-W

A. J. Dear
 Dear's Dig Ditch
 12.50 chains from mouth
 9 ft wide
 3 ft deep
 3 1/2 feet wide at bottom
 4 1/2 " " " " top
 150 mms inches
 Res at head of ditch

Gas Fundney

20000 mms inches
 under 6 inch pressure
 or 3000 cu ft per sec

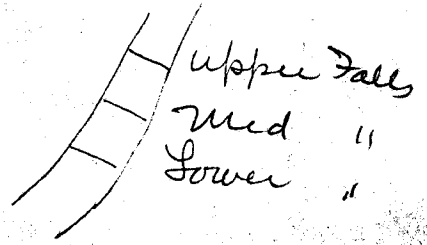
Wapogha River

Same as Colley Field

Sec 2, T-30-S R-9-W

13000 miners inches

Middle Fork Coquille River
6 Mile ditch x

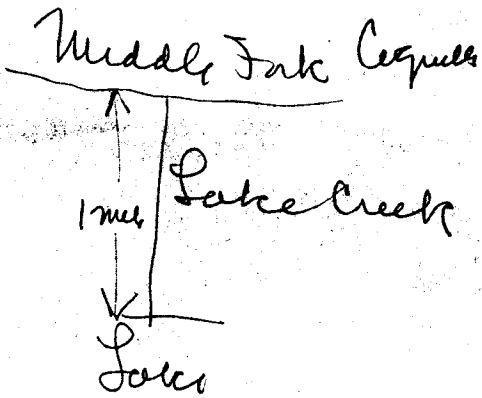


Lake Creek

3000 inches

Sec 19 T-30 S R-9-W

5 mile ditch x



J. Skelley

100 000 inches

7000 feet

1667 ft of Sec 9-10-15-6

T-23-S R-7-W

Reservoir in sections

15-10-9-16-21-22 F23-S R7-W

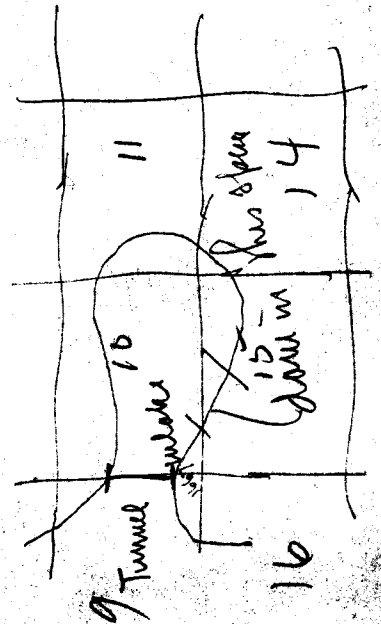
formed by dam across river

at a point between 1 and 2

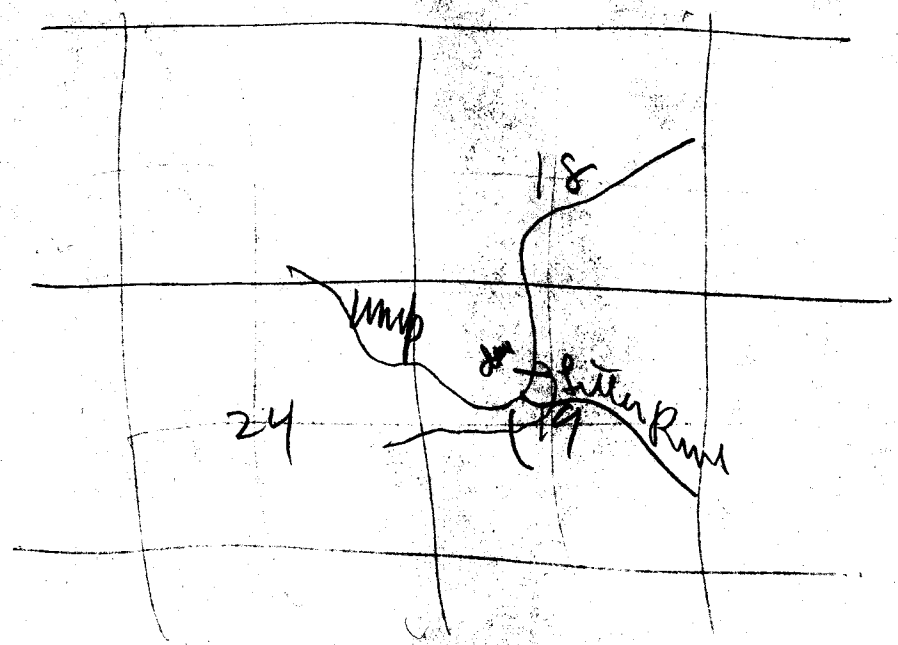
mile down stream from the

line bet Sec 9-10

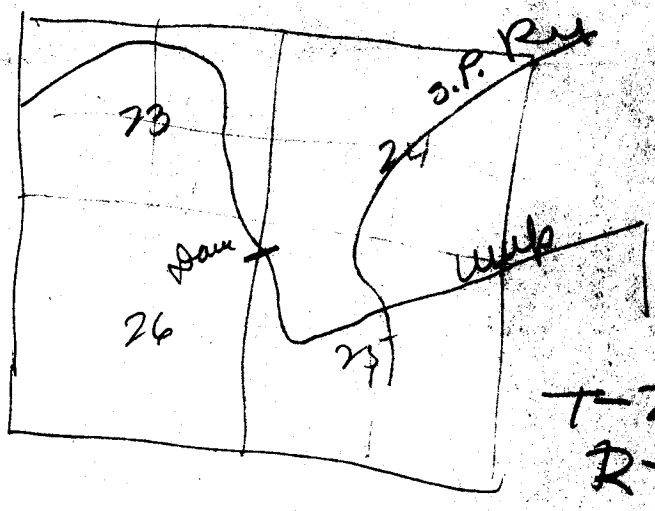
30 foot dam



T-26-S
R-4-W

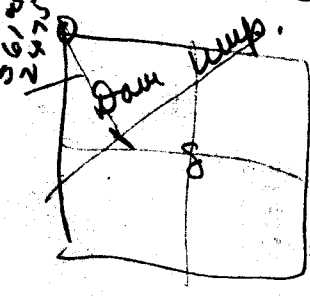


Point of draw 8 chs was
 10 chs south from $\frac{1}{4}$ post west Sec 18/19
 T-26-S R-3-W



T-26-S
R-6-W

Power sets



20 ft head
 3000 cu ft
 5400 HP.