

29-7
 4" 57° E
 " " 24" N
 " " 8" S

B. Oak 9" N 78° W 21 lks ✓
 B. Oak 12" S 10° W 27 lks ✓

B. Oak 19" S 34° E 247 lks ✓
 B. Oak 18" N 20° E 105 lks ✓
 B. Oak 16" N 14° W 117 lks ✓
 B. Oak 12" S 50° W 128 lks ✓

18 17 40.35 ✓ N 89° 30' W 40.35 ✓ 17 16

B. Oak 8" S 40° W 57 lks ✓
 W. Oak 40" N 70° E 82 lks ✓

B. Oak 18" S 85° W 38 lks ✓
 Red Fir 20" N 46° E 25 lks ✓

18 17 40.22 N 89° 30' W 40.22 17 16

19 20
 Red Fir 18" S 42 1/2° E 12 lks ✓
 " 8 N 51° E 12 lks ✓
 " 14 N 47° W 11 lks ✓
 " 15 & 16° W 14 lks ✓

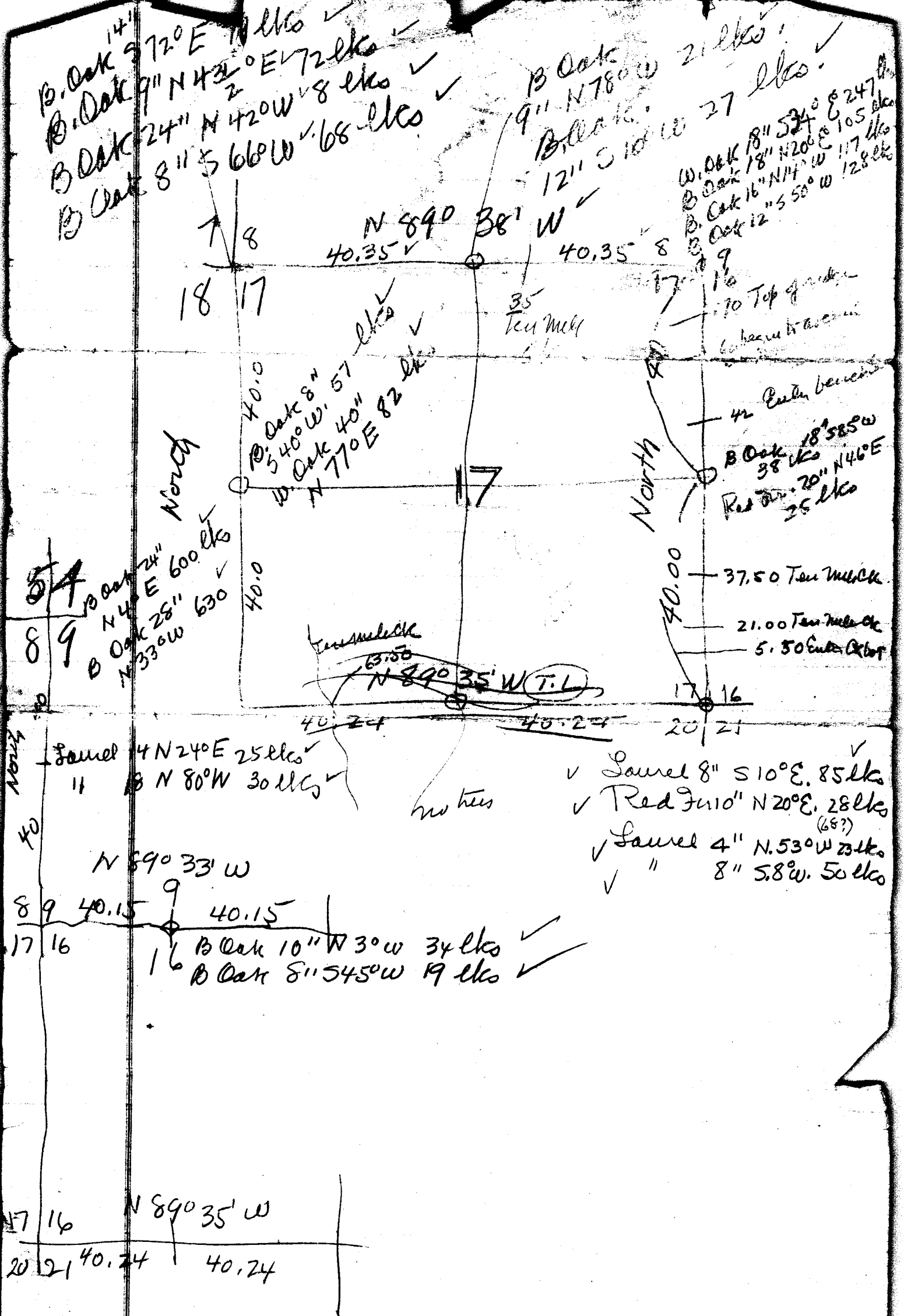
20 21 ✓
 Laurel 8" S 10° E 85 lks ✓
 Red Fir 10" N 20° E 28 lks (68) ✓
 Laurel 4" N 53° W 23 lks ✓
 Laurel 8" S 80° W 50 lks ✓
 W. Oak 24" N 5° W 18 lks ✓
 B. Oak 18" S 74° W 38 lks ✓

37.50
 21.00
 5.50

85
 510
 510
 56.10

168
 168
 18.48

56.1
 36
 20.1



CS FILE FOLDER

CONTAINS

MORE

INFORMATION