

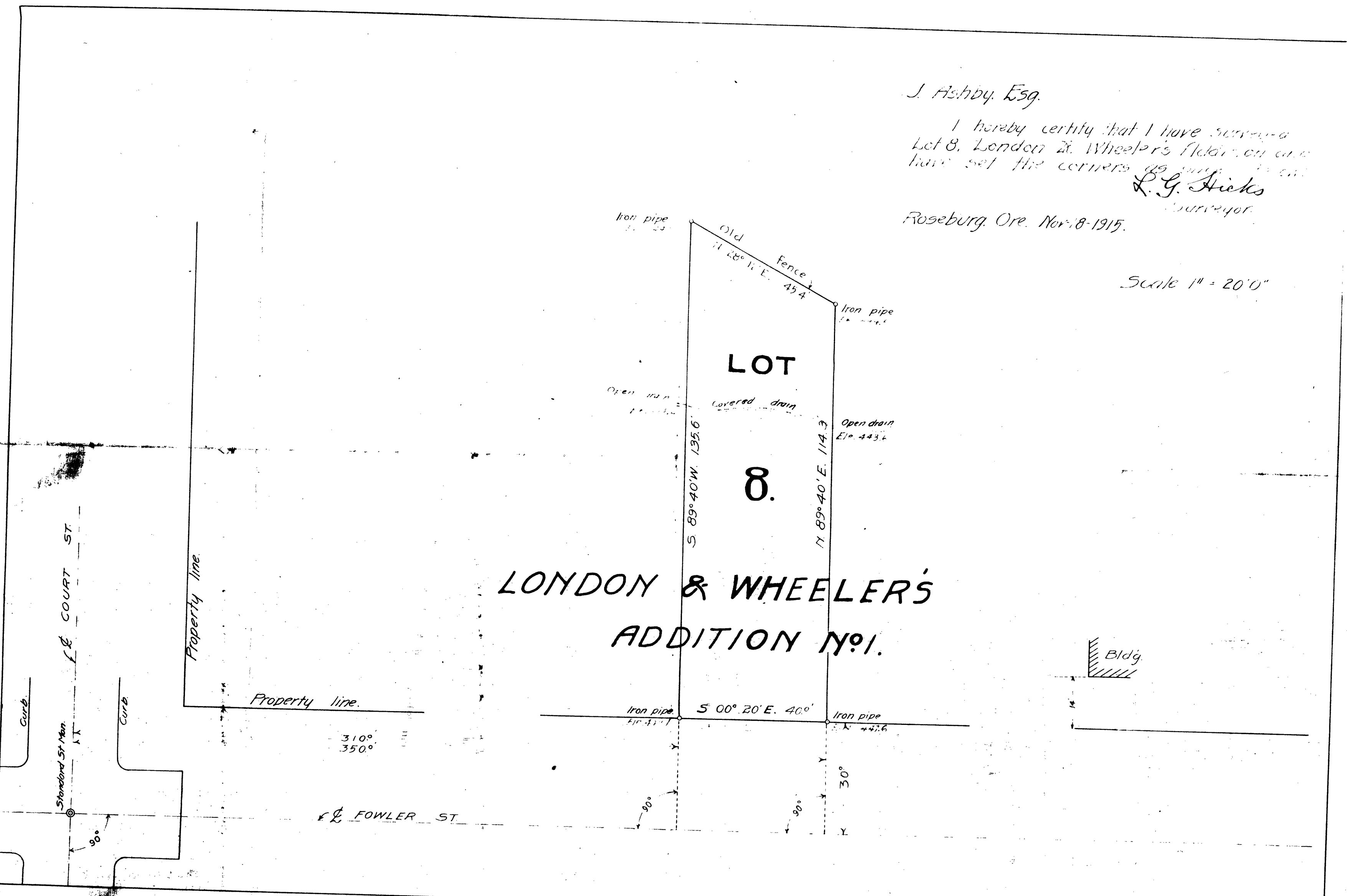
J. Ashby, Esq.

I hereby certify that I have surveyed
Lot 8, London & Wheeler's Addition, and
have set the corners as shown on this

R. G. Hicks
Surveyor

Roseburg, Ore. Nov 18-1915.

Scale 1" = 20' 0"



CS FILE FOLDER

CONTAINS

MORE

INFORMATION