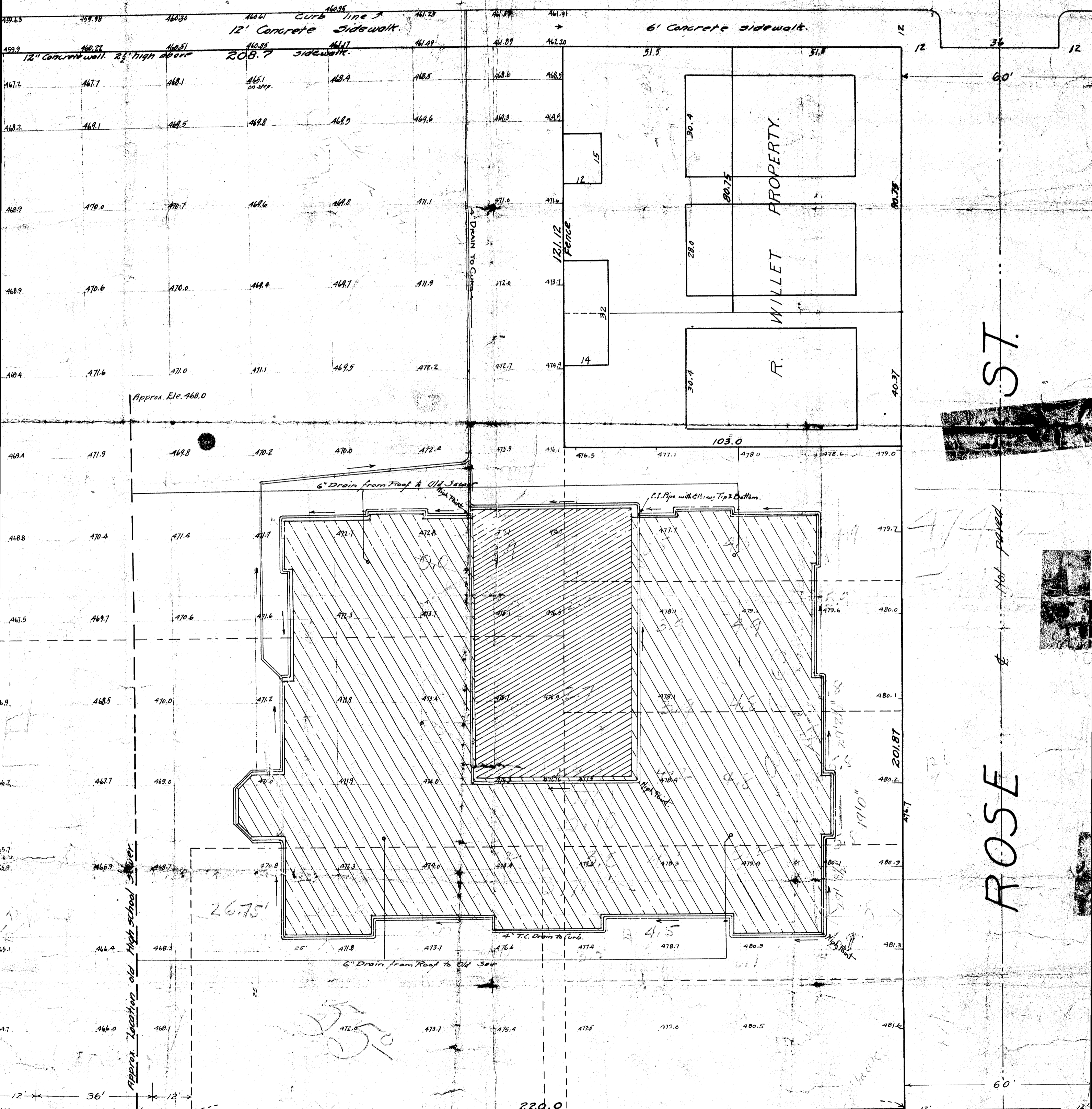


27 Note: There is a sewer in this Post Ave.

# DOUGLAS ST.

Paved. Sheet Asphalt



# WASHINGTON ST.

Paved. Sheet Asphalt

## PLAT OF HIGH SCHOOL SITE

### SCALE 1 IN = 20 FT.

CHECKS

465.44  
 12' Central  
 Note: Ele. of Sewer near Oak & Stephens is 464.33.

ROSE ST. Not paved

WILLET PROPERTY.

R.

Fire hydrant

CS FILE FOLDER

CONTAINS

MORE

INFORMATION