

Fd. 3/4" I.P.
N.W. cor. D.L.C. No. 43

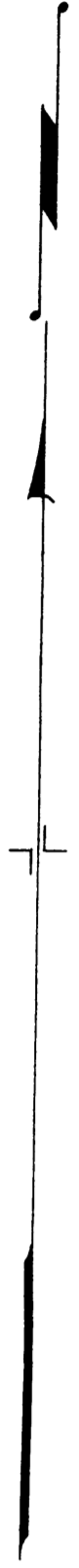
1" I.P. - SET FROM O.B.T.
S.W. cor. D.L.C. No. 44

WILLIAM
MELROSE

CATHCART D.L.C. No. 44

Lot 2 Lot 3
ORCHARDS

SET 1" I.P. - BRASS CAP
M.K.D. D.L.C. 43, N.E. COR.
CO. SURVEYOR - 2 B.T.S.



S87°18'E 68.5

N 89°40' W 1977.6

9

10

12

13

FIRST
ADDITION

EDEN

17

16

15

ORCHARDS

DOERNER

(COUNTY No. 90)

SET 1/2" I.P.

OLD FENCE POST

OLD FENCE POST

OLD FENCE POST

D.L.C. No. 42

Rock - S.W. cor. D.L.C. 43
(PER BARNHART)

* WEST 7437.1 (PER BARNHART) 7417.4' 1849
7412.36 Rec

END OF N-S FENCE

Fd. 1 1/4" I.P. - BRASS CAP - IN CREEK
SET BY BARNHART - JULY, 1948
30° W ORN - N34°45' W 25.4
S.E. cor. D.L.C. 43

NOTE :-
ALL BEARINGS SHOWN ARE TRUE, BASED ON SOLAR
OBSERVATION MADE JULY 11, 1952, EXCEPT THAT MARKED
*, WHICH IS PLAT BEARING PER BARNHART.
N.E. cor. D.L.C. No. 43 DETERMINED FROM DISTANCES
FROM S.E. cor. & N.W. cor. AS GIVEN IN ORIGINAL GOVERN-
MENT SURVEY NOTES. IT WAS CHECKED BY DISTANCES
FROM COR. LOTS 2 & 3, MELROSE ORCHARDS, AS DETERMINED
BY COMPARISON OF DISTANCES ON FILED PLATS. OLD FENCE
POSTS NOTED ARE IN OLD BRUSH LINE, APPARENTLY AN
OLD FENCE LINE.

COUNTY SURVEYOR'S OFFICE
DOUGLAS COUNTY, OREGON

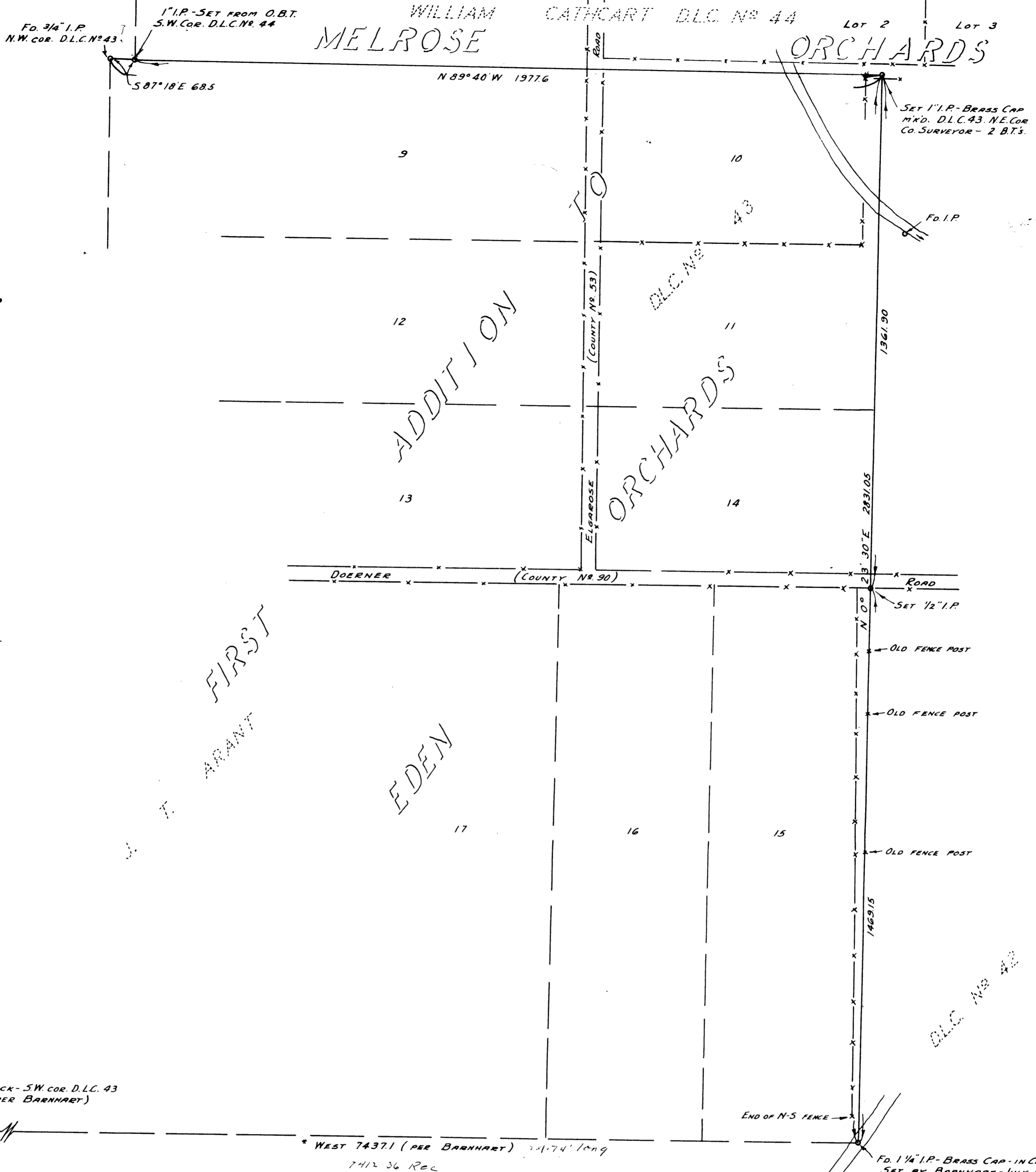
SURVEY TO ESTABLISH EAST LINE
OF LOT 15, FIRST ADDITION TO
EDEN ORCHARDS.

BEN. B. IRVING COUNTY SURVEYOR
SURVEYED JULY 10, 11, 1952. SCALE 1" = 200'



C.S. Plat No. 18/46

M 12/45



NOTE :-
 ALL BEARINGS SHOWN ARE TRUE, BASED ON SOLAR OBSERVATION MADE JULY 11, 1952, EXCEPT THAT MARKED *, WHICH IS PLAT BEARING PER BARNHART.
 N.E. COR. D.L.C. No 43 DETERMINED FROM DISTANCES FROM S.E. COR. & N.W. COR. AS GIVEN IN ORIGINAL GOVERNMENT SURVEY NOTES. IT WAS CHECKED BY DISTANCES FROM COR. LOTS 2, 3, MELROSE ORCHARDS, AS DETERMINED BY COMPARISON OF DISTANCES ON FILED PLATS. OLD FENCE POSTS NOTED ARE IN OLD BRUSH LINE, APPARENTLY AN OLD FENCE LINE.

COUNTY SURVEYOR'S OFFICE
 DOUGLAS COUNTY, OREGON

SURVEY TO ESTABLISH EAST LINE
 OF LOT 15, FIRST ADDITION TO
 EDEN ORCHARDS.

BEN. B. IRVING COUNTY SURVEYOR
 SURVEYED JULY 10, 11, 1952. SCALE 1" = 200'



C.S. Plat No. 18/46

M 12/45

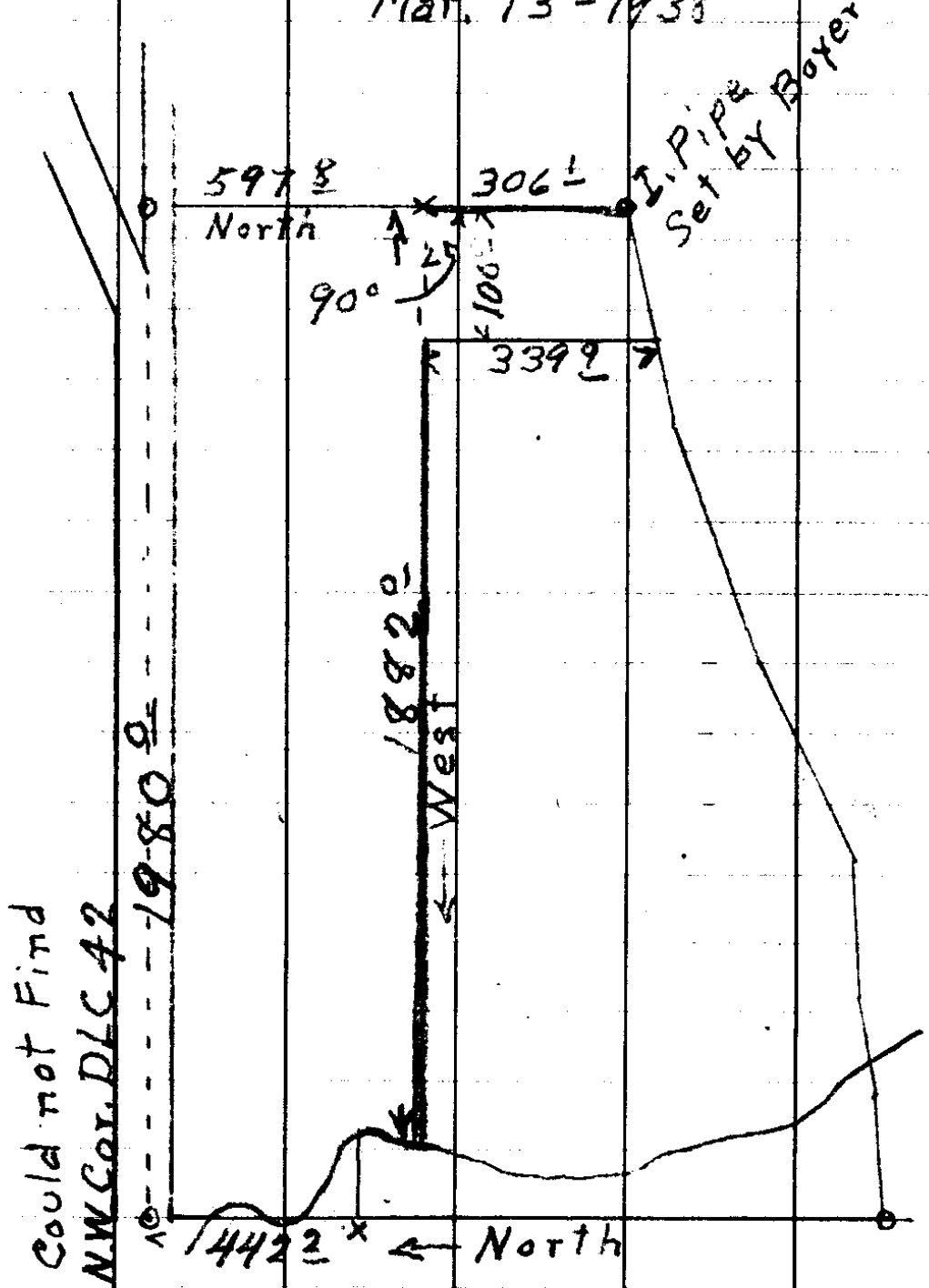
Millet & Johnson

18-66

T. 27 S. R. 7 W.

Melrose

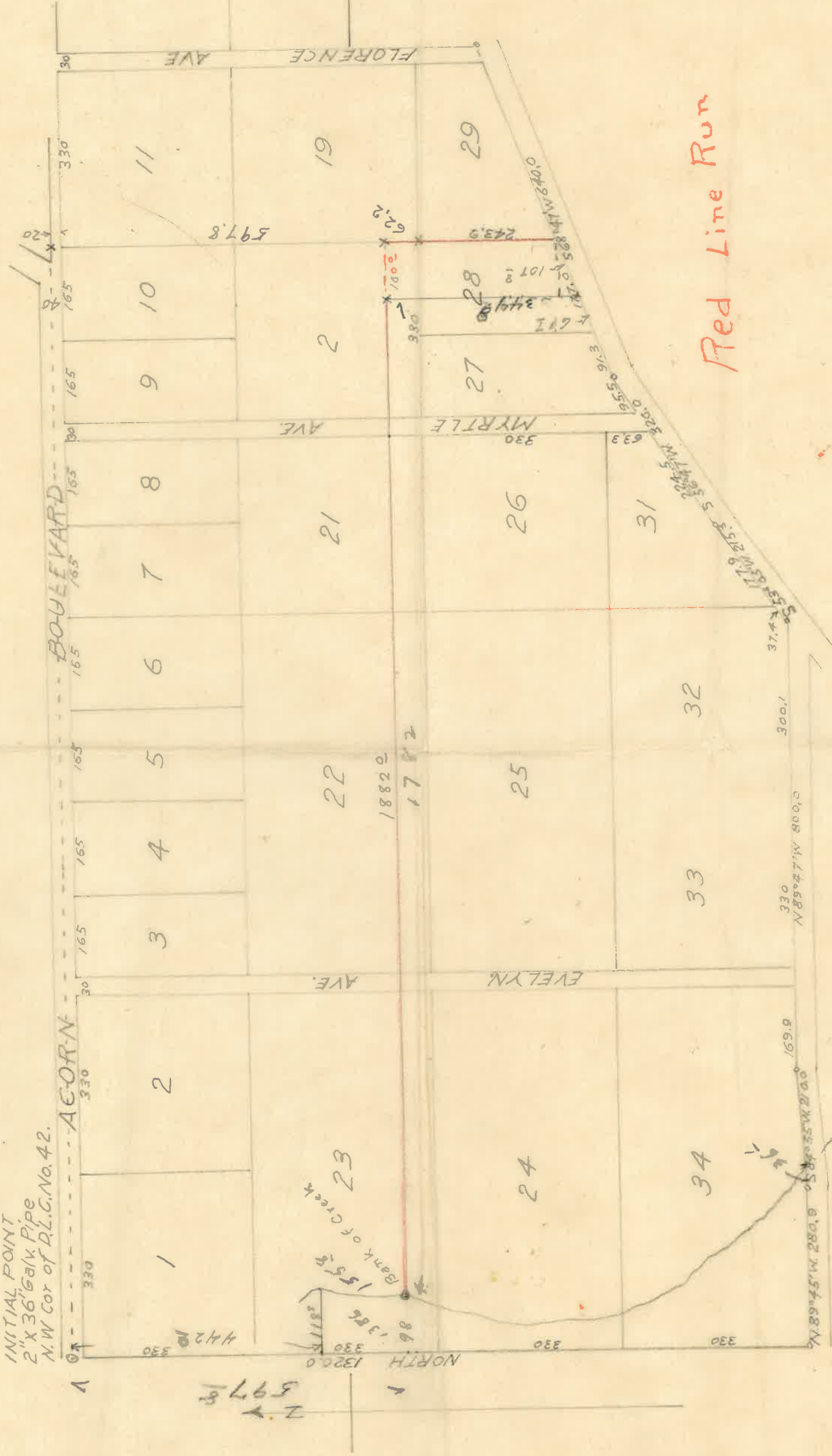
Mar. 13 - 1938



See Map Town of Melrose

T. 27S. R. 7W
Town of Melrose

INITIAL POINT
2" x 36' Galv. Pipe
N.W. Cor of D.L.C. No. 42.



Red Line Run

CS FILE FOLDER

CONTAINS

MORE

INFORMATION