

Scale 1 inch to 200ft.

MAP OF C. G. HILLS LAND IN SECTION 9, T.P. 30 S.R. 4 W  
 3/4 X 24" Iron Pipes set at all angle points and on the  
 Right bank of South Umpqua River

Cont. 10.3188 acres

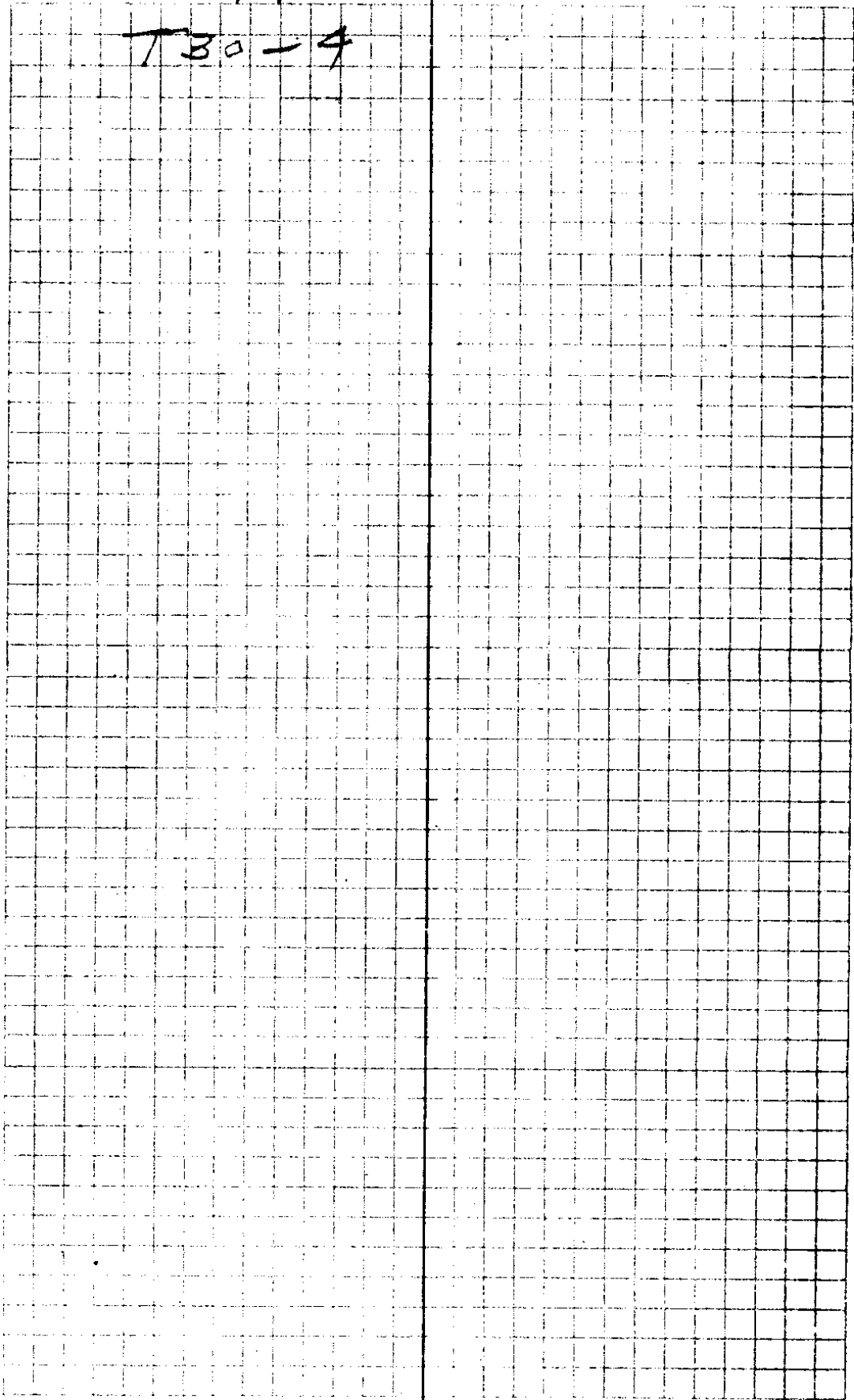
V. 18  
 E. 63

G.S. File No. 18/63

18-63

CC Hill

T30-4



See p 5 for description

June 12 1935

Survey for C.C. Hill

Cain X

Richardson Chairman

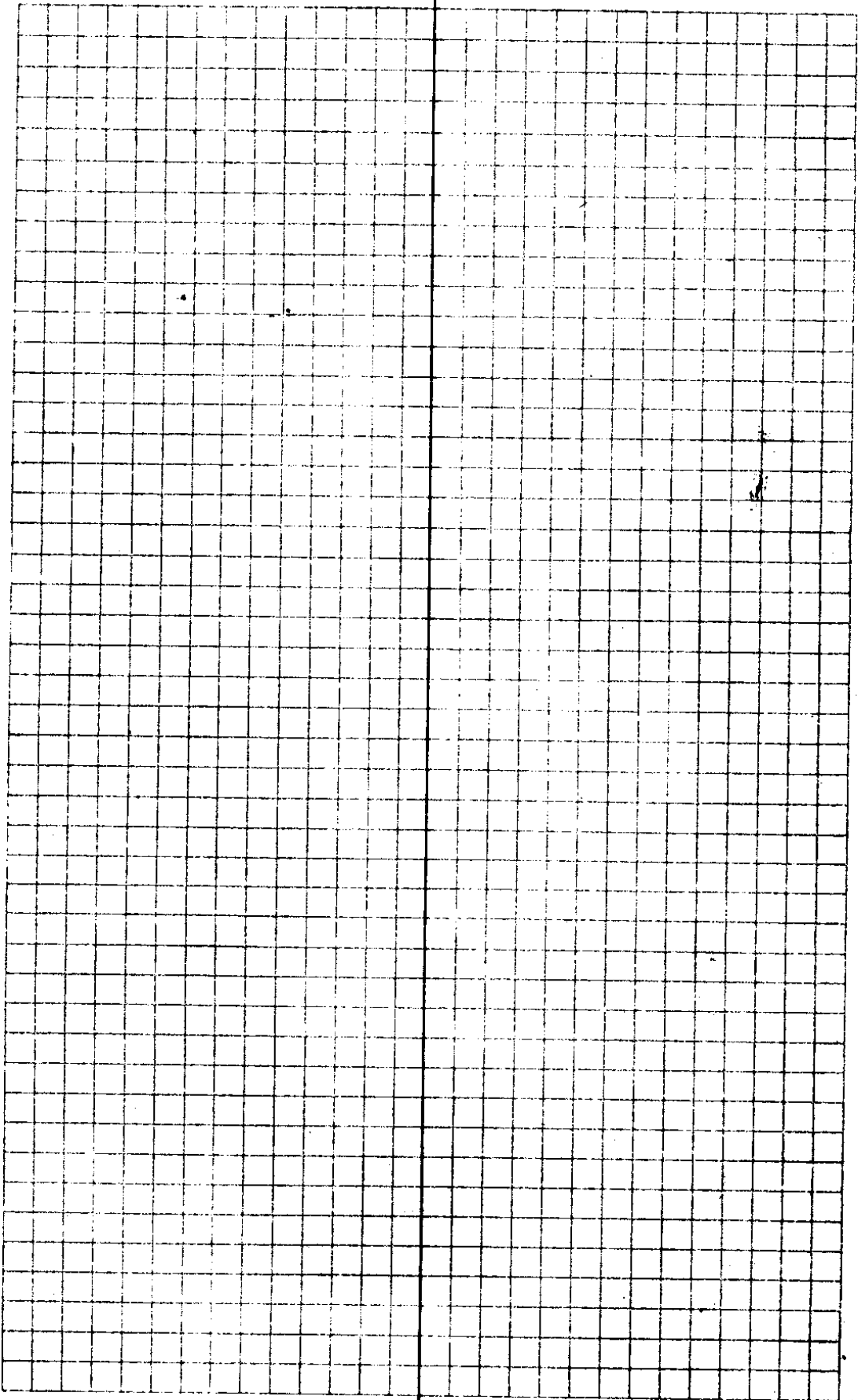
Def M.C C.C.

|     |       |         |          |
|-----|-------|---------|----------|
|     | 1485' |         | N29°24'N |
| Δ 8 |       |         |          |
|     | 500'  |         | S20°3'E  |
| Δ 7 |       |         |          |
|     | 265'  | 90°L    | S80°15'E |
| Δ 6 |       |         |          |
|     | 70'   | 90°R    | S88°52'W |
| Δ 5 |       |         |          |
|     | 139'  | 90°L    | S80°15'E |
| Δ 4 |       |         |          |
|     | 52.0' | 90°R    | N88°52'E |
| Δ 3 |       |         |          |
|     | 401'  | 93°L    | S1°52'W  |
| Δ 2 |       |         |          |
|     | 700'  | 88°08'R | East X   |
| 0 4 |       |         |          |

to a point 20 1/2' west of the L. cor of the G.T. Oak  
 2' from road flash with ground  
 from which  
 R.W. Oak 11 dia brs. N 7° E 11'







Description of Land Surveyed  
for - C.C. Hill June 12, 1935

Beginning at the Cor. of Section  
to Sec 9, T. 15 S., R. 16 E., S. 30 S. 1/4 W. 1/4 N. 1,  
Douglas County, Oregon.

Thence N 29° 24' W 185.6 ft. to a 3/4" x 24" iron pipe  
driven 24" in the ground on the right  
bank of the Scumpas River and on  
the South line of the Great Day 24' x 24' ft.  
in above Township and Range.

East 703.4, with South line of  
Cl. 47 to a 3/4" x 24" iron rod from  
which the L. Cor. of Cl. 47 bears East-  
201° 57' and 3 W. Oak 11" in dia. 10 W. 17° E 11 ft.

- " S. 1° 53' W 401.7 to a 3/4" x 24" iron pipe
- " N 88° 52' E 52° " " " "
- " S 1° 08' E 130° " " " "
- " S 88° 52' W 70° " " " "
- " S 1° 08' E 165° " " " "
- " S 6° 02' E 181 1/2 " " " "

driven 24" in the ground on right  
bank of the Scumpas River

" S 6° 02' E 318 1/2 to place of beginning

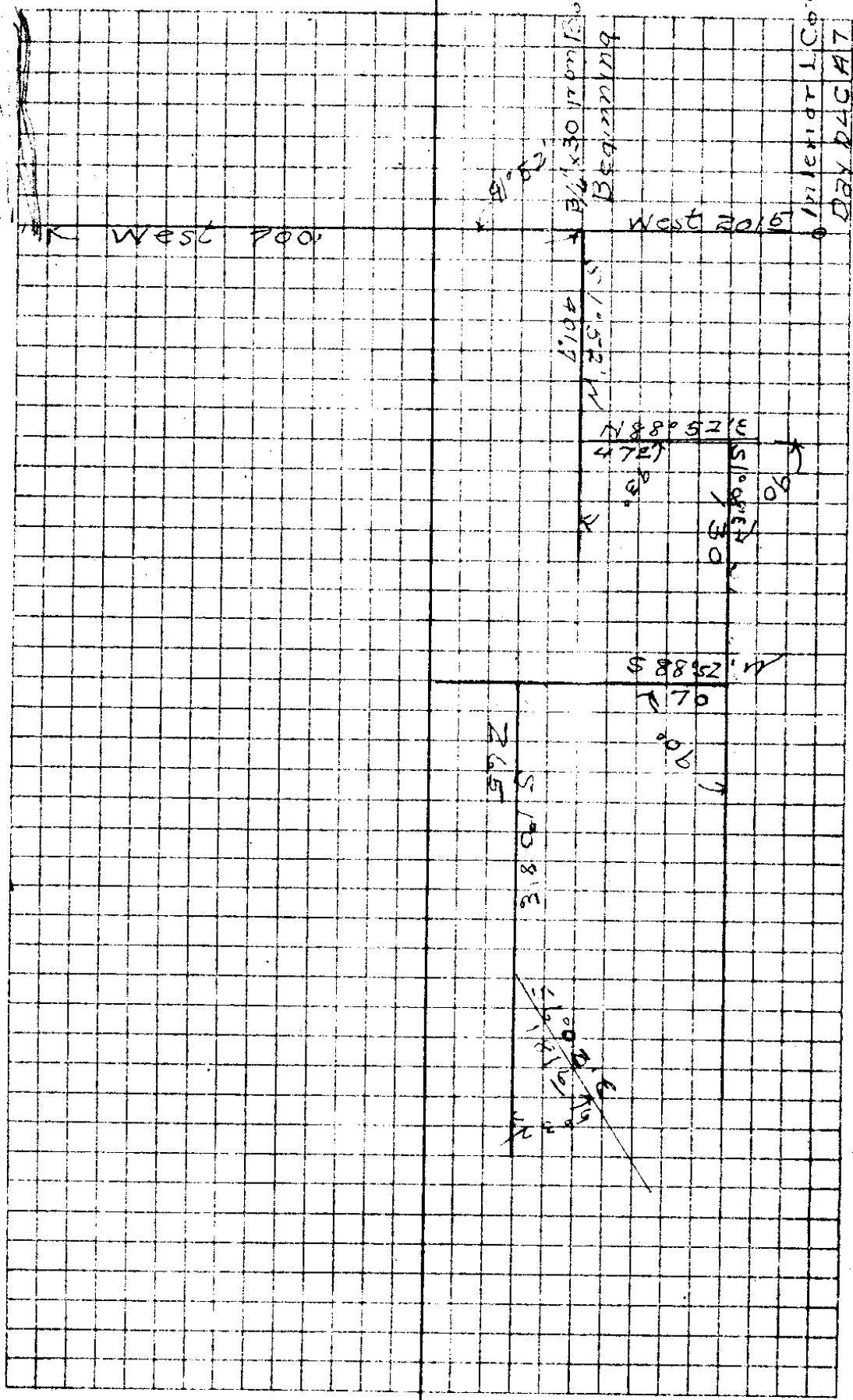
C.C. Hill 10131884



7

42.4  
 4.53  
 56.02.7  
 42.5  
 10.1  
 52.6  
 70.08  
 10.1 m or 30.1 m  
 42.5  
 197.6  
 240.1  
 197.6  
 498.0 240.1 194.4

5.57 W  
 527.58 E  
 526.27 E  
 50.10 W  
 308  
 2592  
 208.0 103.5  
 32  
 31  
 293  
 232  
 N  
 S  
 E  
 W  
 6





CS FILE FOLDER

CONTAINS

MORE

INFORMATION