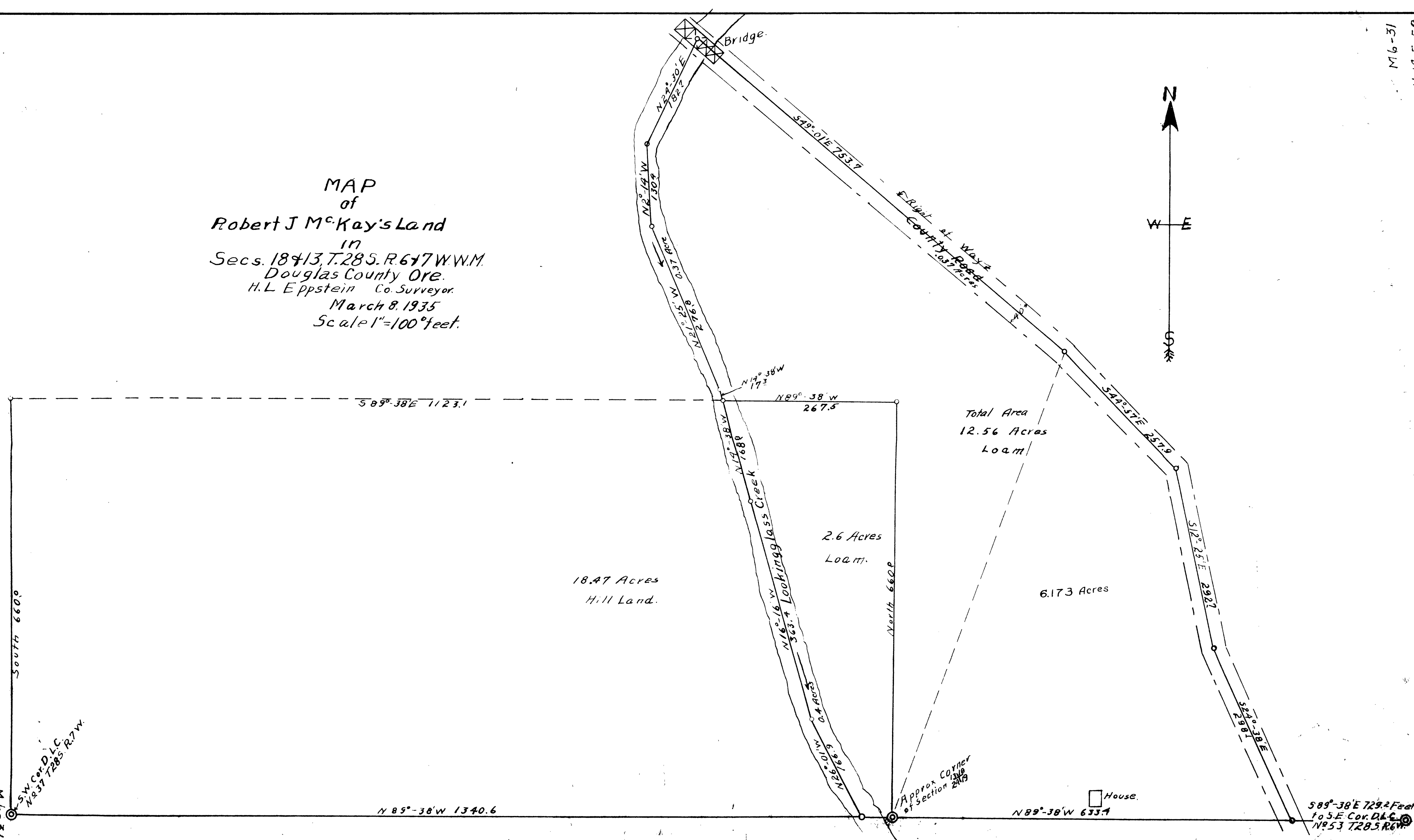
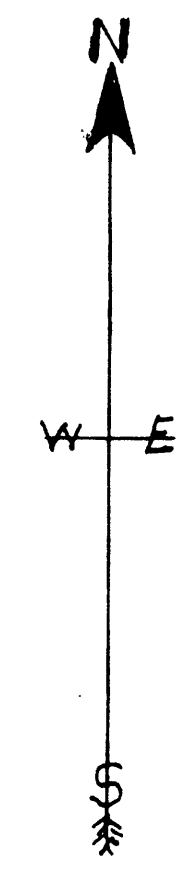


MAP
of
Robert J McKay's Land
in
Secs. 18 & 13, T. 28 S. R. 6 & 7 W. W.M.
Douglas County Ore.
H. L. Eppstein Co. Surveyor.
March 8, 1935
Scale 1" = 100' feet.



① A	DIST			
A 9	1794	197°21'		N6'E N4-05E
A 8	358 ²	193°01'		N13½°W N13-16W
A 7r	165 ⁵	243°43'		N25°W N26-17W
		<u>Exterior Angles</u>		
		<u>Interior Angles</u>		
Δ C ⁴ ₁₃	332 ⁹	P.O.T.		West 8.7
A 5 ⁴ ₁₀₂₉	300 ⁵	270°		West 6.5 N
Δ 4	30	90°		North
Δ 3 ³ ₇₂₉	195 ⁸	P.O.T.		46-N
Δ 2	533 ⁴	85°43'		West
# 1	20°			South

S.E. Cor.
G.L. 53

Feb 24, 1935

(2)

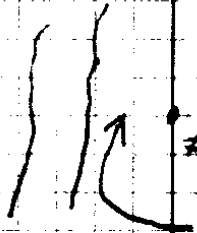
H.L. Eppstein

B.A. Lane

Bob McKay

more 1, 3 south.

more 3, 5 south



soft to center of creek

from 4 mine 5.4 S

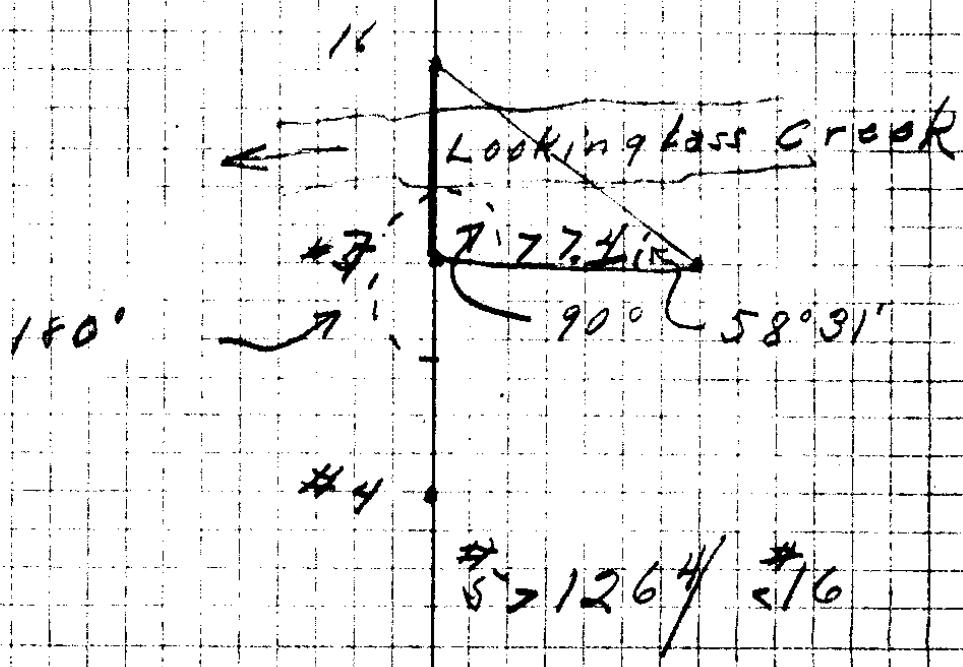
5" ^{Pine} Peach tree

N 41° W 27'

S.E. cor. Cl. 53

③₁₆

	12661	180°	West
6			
Δ 3	309	205°05'	South South
Δ 4	2933	167°20'	S24°E S27-05E
Δ 15	2927	212°32'	S11°E S12-25E
		250°	down draw to creek
Δ 14	2572	184°04'	S44½°E S47-57E
Δ 13	6937	281°48'	S48½°E S49-01E
Iron pipe	2569	284°55'	S45-54E
Δ 12 Bridge	1448	215°59'	N30°E N29-11E
Δ 11	1310	206°55'	N5°W N6-48W
Δ 10	309½	142°12'	N35°W N33-43W
Δ 9			



- Hub # 12 on East End of Bridge
- Hub # 11 30' to creek
- Hub # 10 60' to creek
- Hub # 9 130' to creek

C. S. File No. 18/58

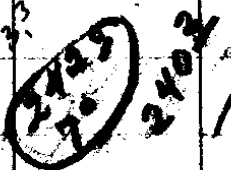
(5)

SM. Gov
CI# 37

325 272°37'

North

Δ 21



180°

West

Δ 20

585 180°

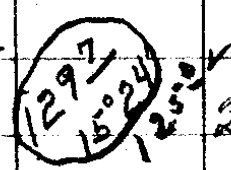
West

Δ 19

840 180°

West

Δ 18
16127



270°

West

Δ 17

25° 90°

South

Δ 16

6

T 28 S. R. 7 W

S.W. Cor. Cl. 37

Marked 12" White Oak

N 32° E 39 1/2 Feet

Feb 24 - 1935

TIME Ver A Hor A

PM 3-43-50 | 20°45' - 37°35'

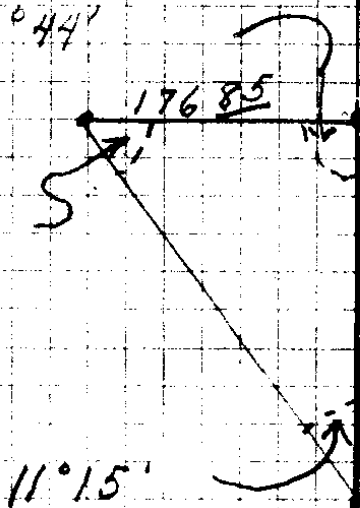
PM 3-45-00 | 21°08' - 36°44'
TN 89-27W



S 53° W

100° 44'

68° 01'



#19

890 3/4 Feet

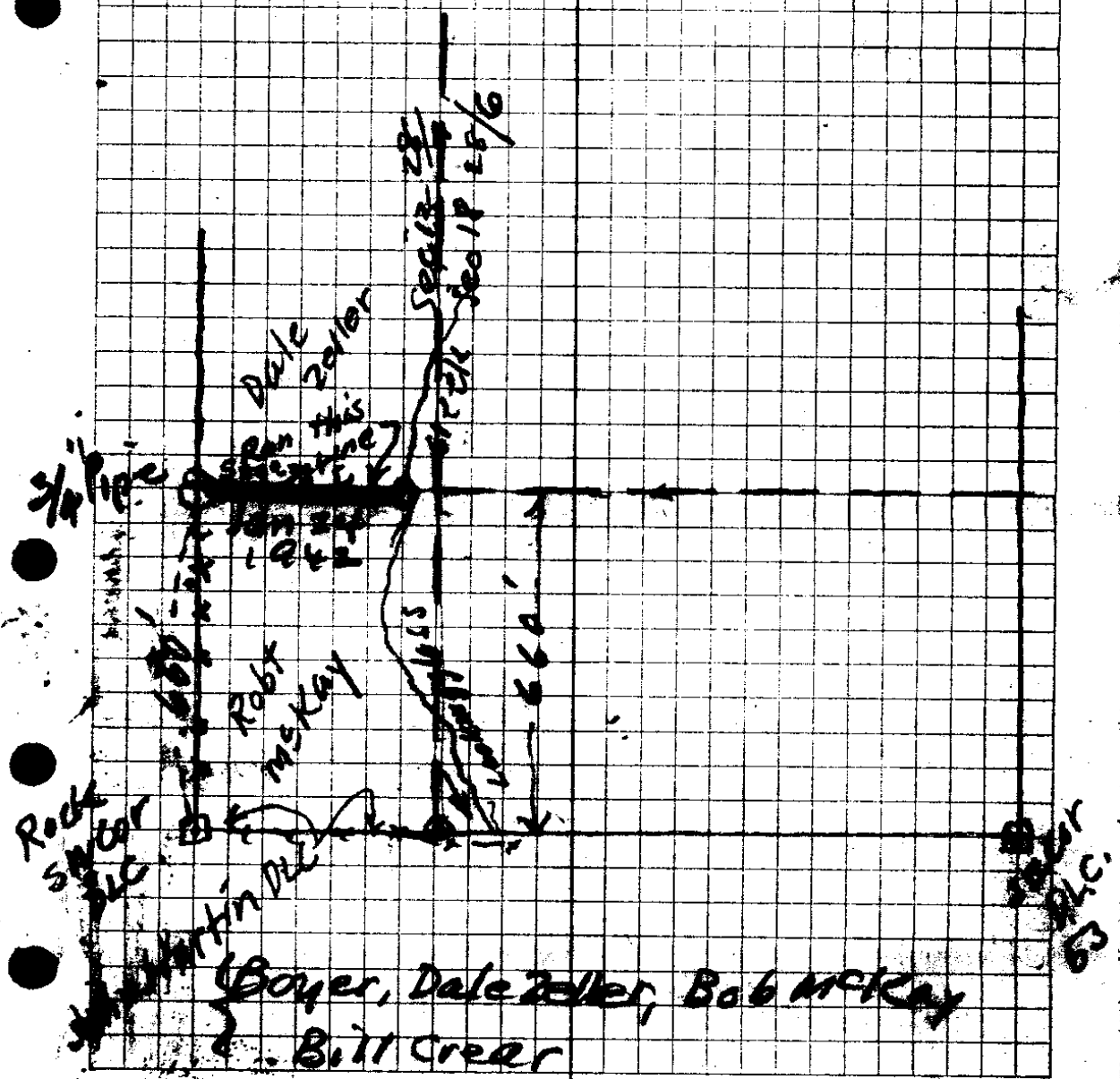
#18

#17

C. S. File No. 18/38

9744 *
 205
 19920
 4488
 192400

650
 519
 131.0



Boyer, Dale Zeller, Bob McKay
 Bill Creech

C. S. File No. 14/58

Date Zeller.

SAT ~~24~~ = Jan
1942

S 89° 38' E on line bet Zeller & McGraw

6

525 38° 45'

5

1420 24° 15'

4

1154 9° 30'

3

956 F

2

E 2558 15° 45'

1

E 2850 F

W. Side D.L.C.
ON ROCK SW COR
DLC

660 = N End = NW Cor McGraw Property

North 131

5+19

North 300

North 2250 130 = 219.2

C. S. File No. 18/58

CS FILE FOLDER

CONTAINS

MORE

INFORMATION