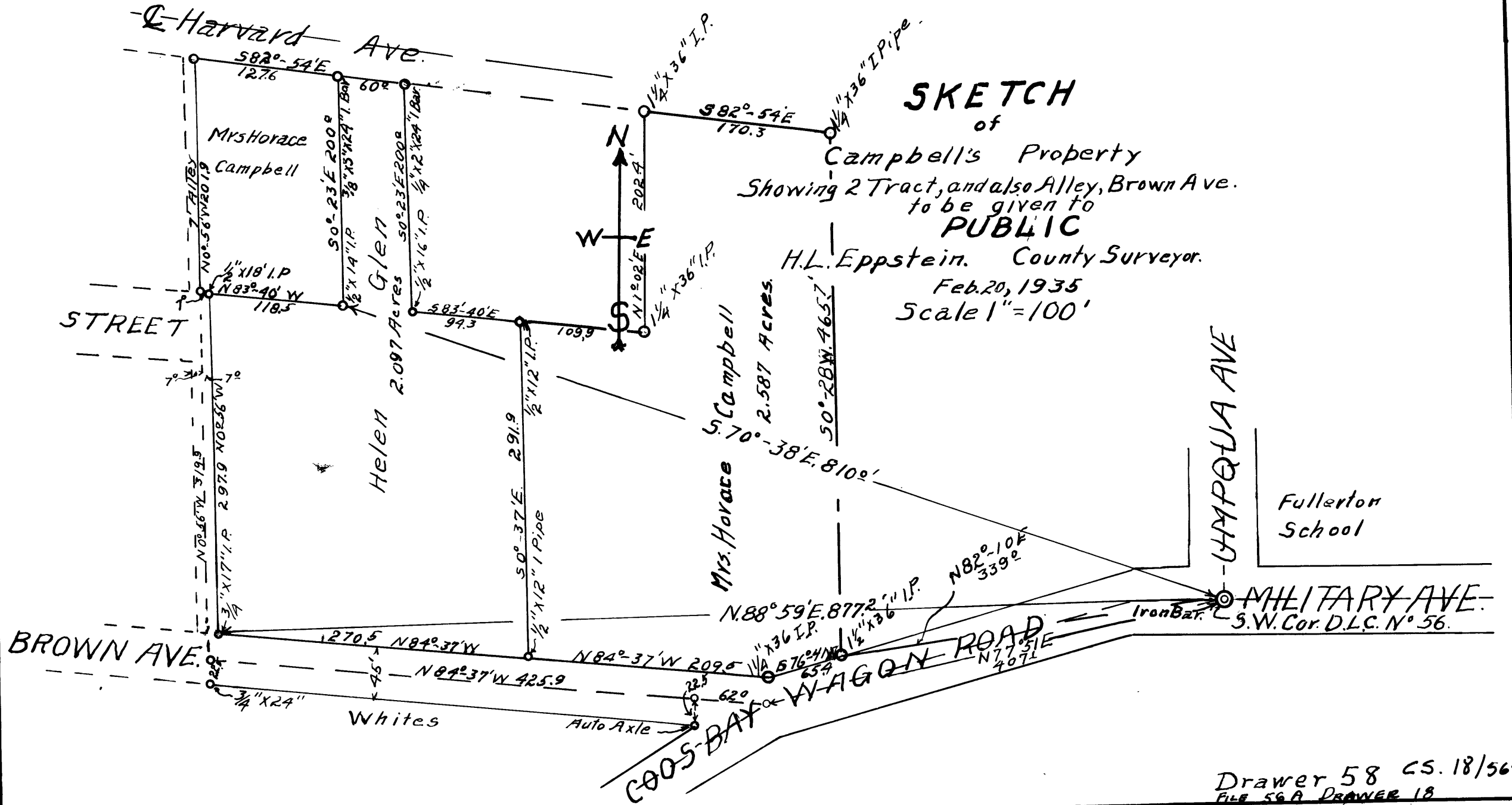


# SKETCH

of  
Campbell's Property  
Showing 2 Tract, and also Alley, Brown Ave.  
to be given to  
**PUBLIC**  
H.L. Eppstein. County Surveyor.  
Feb. 20, 1935  
Scale 1"=100'

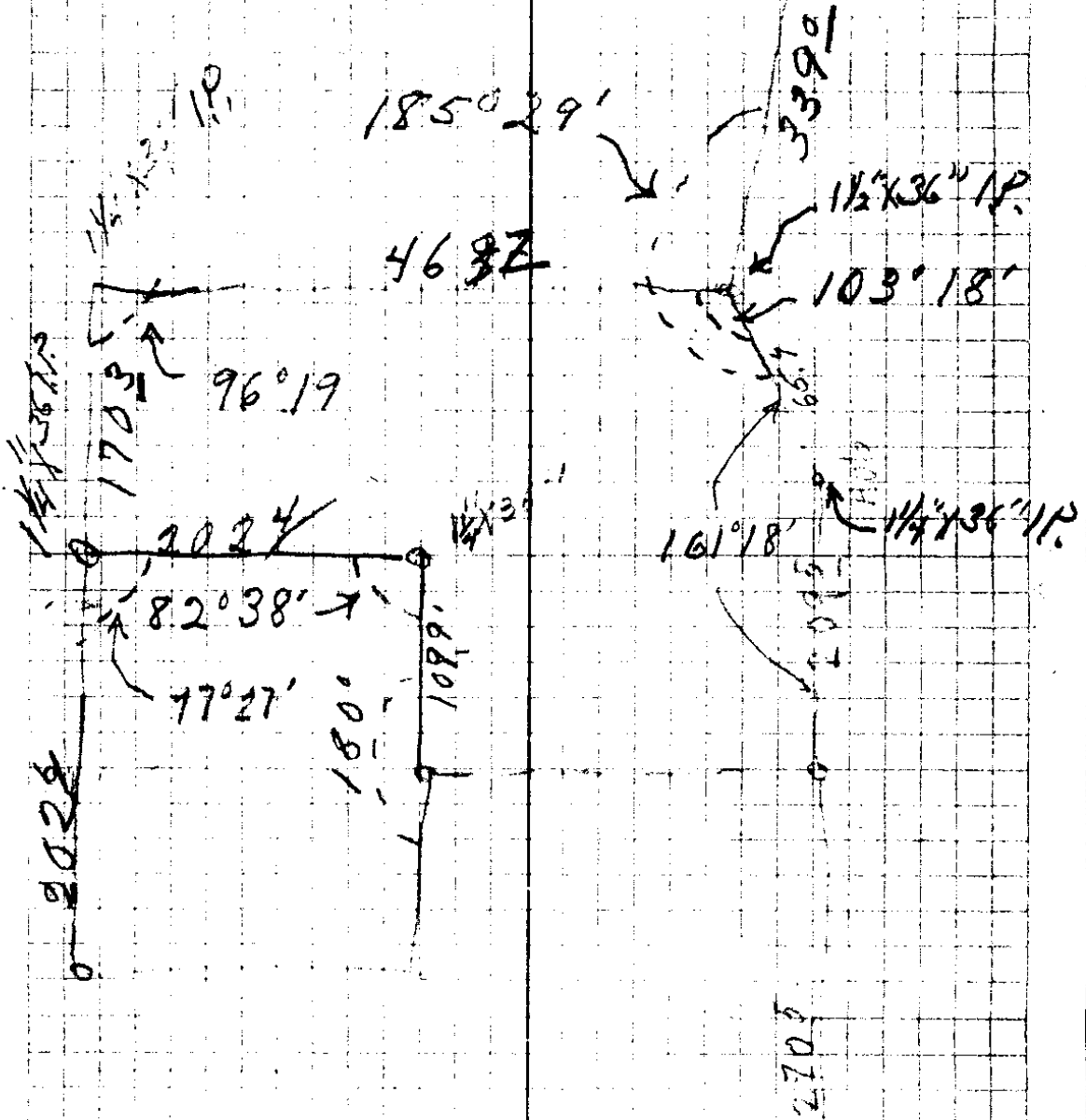




Cambells

Feb 28, 1935

18-50 H L Eppstein  
N E Richardson  
B. A. Lane  
DLC. Cor



1850 29'

46 32

33390'

1 1/2\" x 36\" IP

103° 18'

1 1/4\" x 36\" IP

1703'

96° 19'

2024'

82° 38'

77° 27'

180°

1099'

2028'

101° 18'

1 1/4\" x 36\" IP

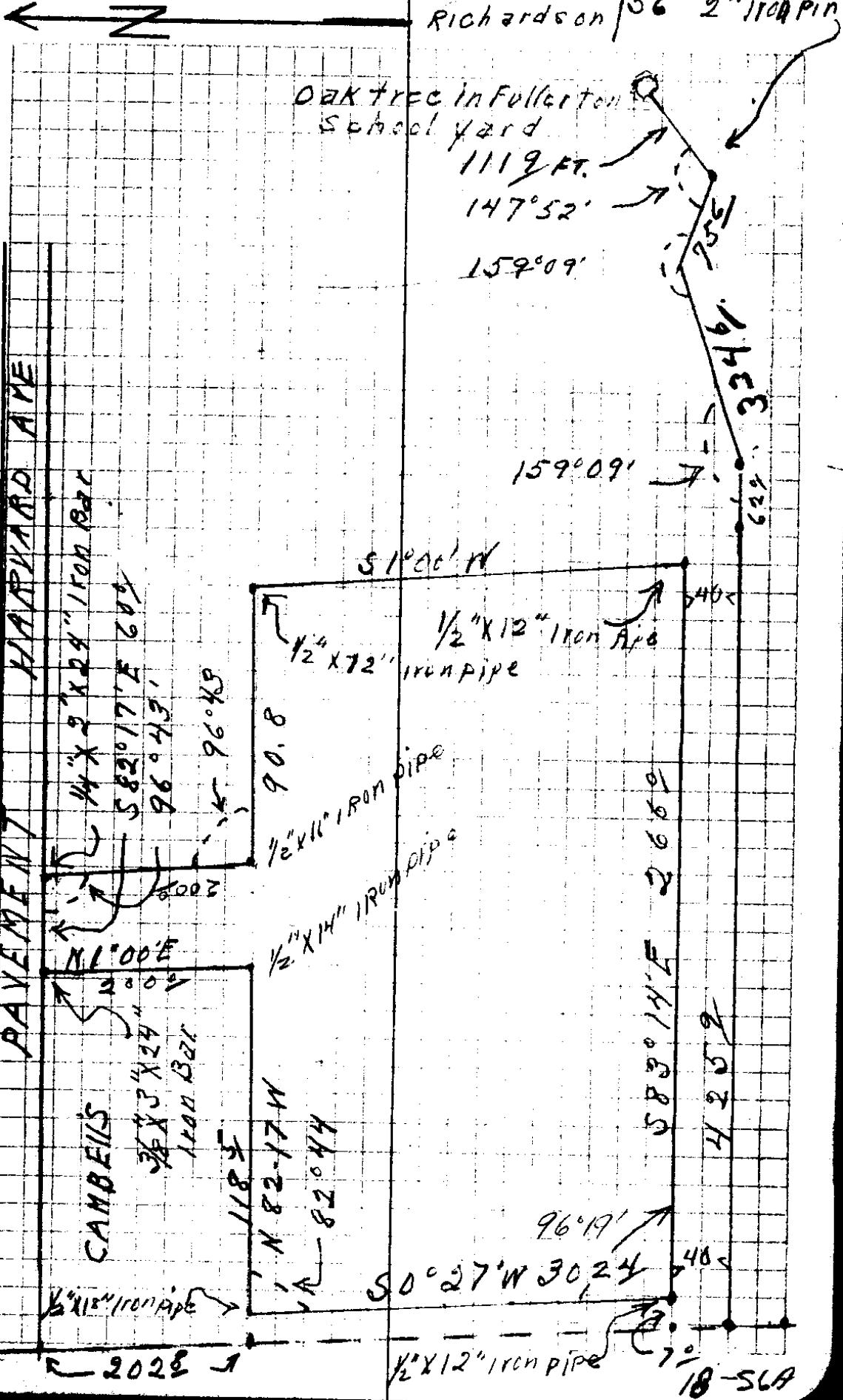
2705'

19 - 1935

18-56A

Eppstein  
LANE  
Richardson

S.W. COR. C.I.  
56 2" IRON PIN



Interior  
Angle

Front P.C.

$\Delta 7$  266° 96°17'

$\Delta 6$  302 7' 82°44'

7°

1/2" x 18" P.

118 5'

A 5

1/2" x 12" P. 40 83°17'

A 4

20 96°43'

$\Delta 3$

108 8' 90°00'

$\Delta 2$

20° 90°00'

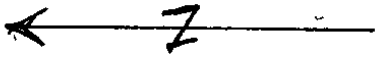
$\Delta 1$

913 Inter  
96°43'

NE Cor.

60°

NW Cor.



HIGHWAY AVE

NE

NW

96°43'

internal  
Angle

Mag.

CC,

366

214°36'

S55<sup>3</sup>/<sub>4</sub>°E

To tree

1119

147°52'

N58°E

2" Iron Pin  
SW cor.  
P.L.C. 56

756

198°09'

S87-19E

Hob in  
Road

3346

159°09'

N69°E N74-32E

Hob in  
Road

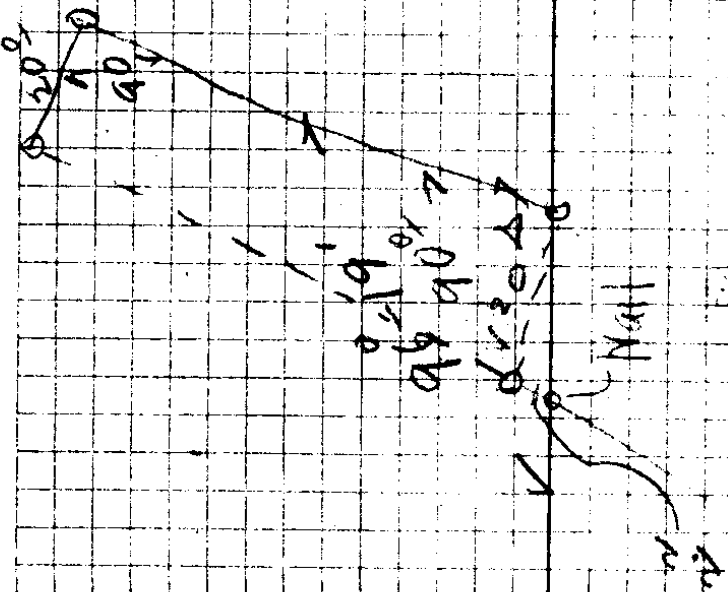
620

S89°30'E S84-37E

Hob in  
Road

4259

96°43'



9  
0  
△

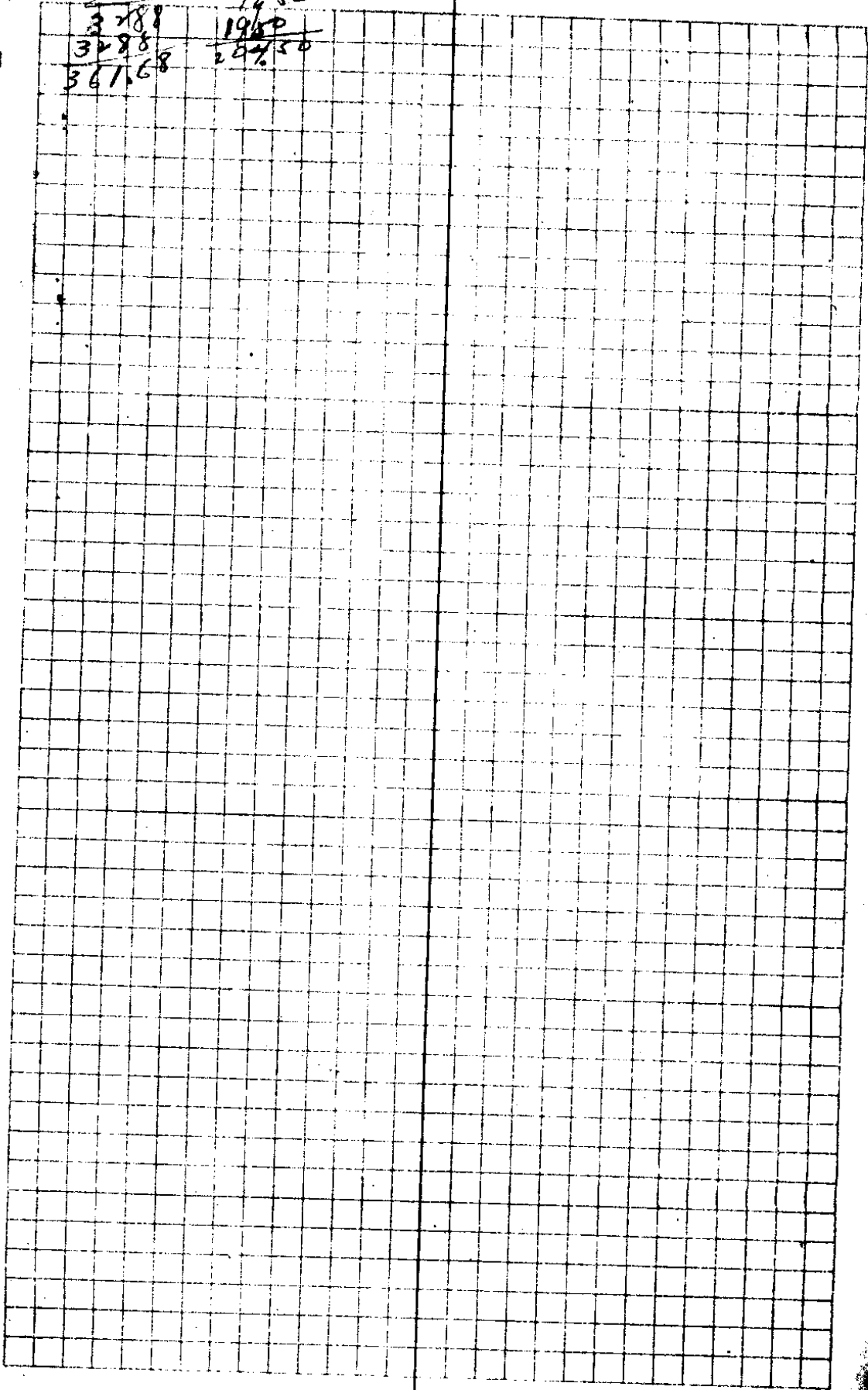


548

3-25

3288
3288
36168

1450
1950
28450

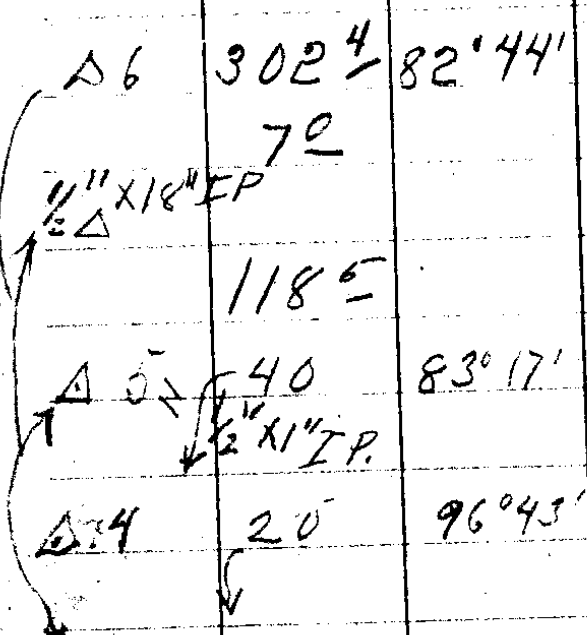


756  
 3346  
 198°09' INTA  
 N 86° E  
 159°09' INTA  
 N 69° E  
 620  
 TONY  
 589'30"

Nail Road

ON ROAD 4259.

A 7



Δ3

108° 90°

Δ2

202 90°

Δ1

91' 2  
 14 feet  
 96-43  
 S 1° W

NE COR

60°

NW COR

CS FILE FOLDER

CONTAINS

MORE

INFORMATION