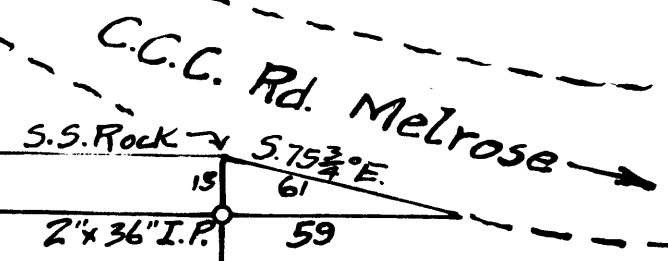
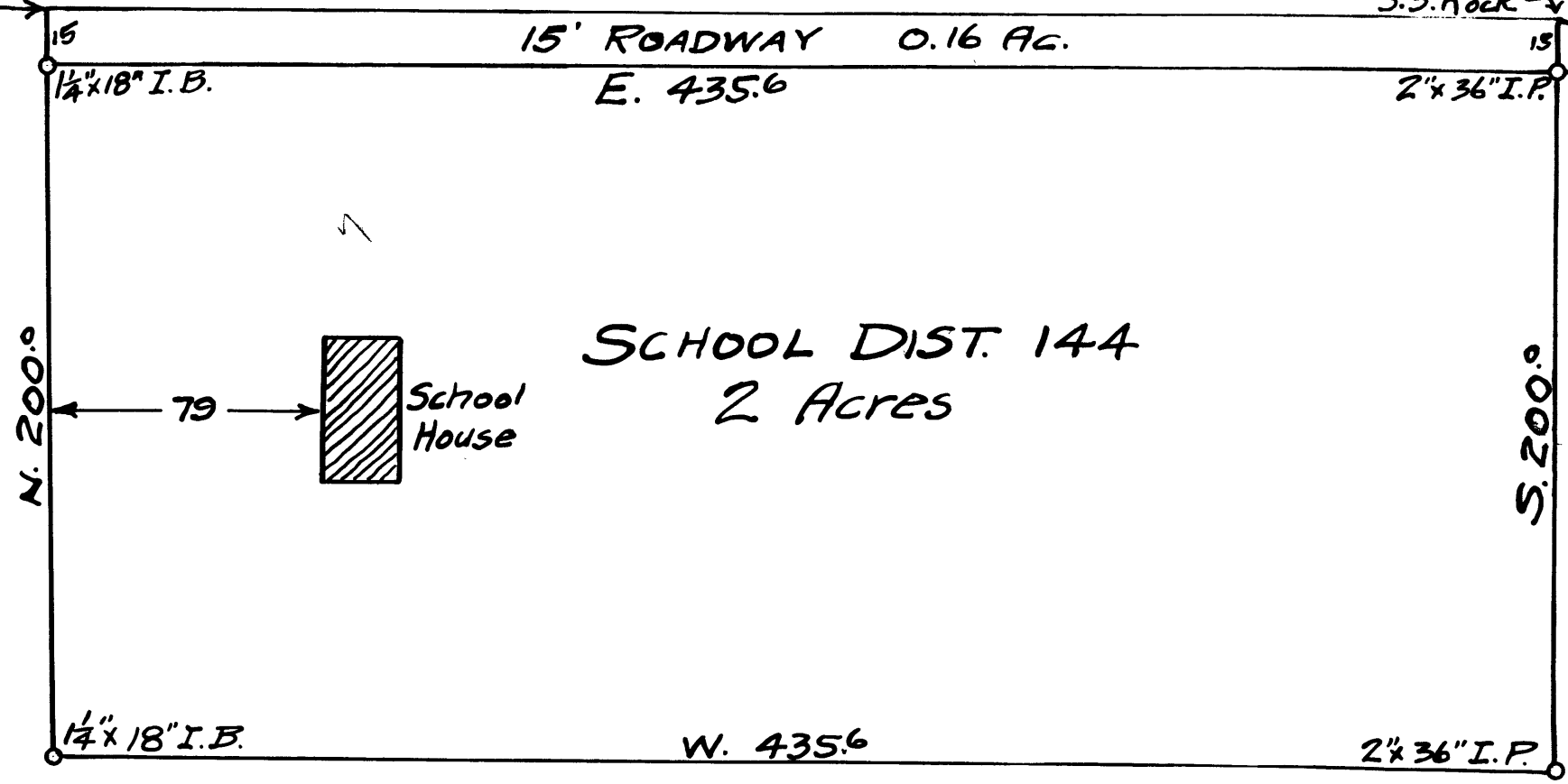


S. 89° 35' E. 1255.4



PLAT OF
 SCHOOL DIST. NO 144
 Scale 1" = 50'
 SEC. 34 - T. 26 - 8
 Co. Surveyor
 Dec. 1935



SCHOOL DIST. 144
 2 Acres

Mrs Ralph Ryther
 1518 W. 64th St
 Los Angeles Calif.

School Grounds

Sec. 34 T. 26 S. R. 8 W.

N.W.
Cor

147.6 112°26'R S62°55'W

8

125.8 59°45'R S49°31'E S50°E

7

387.2 15°39'L N70°44'E

6

248.6 11°24'L N86°23'E N86¼E 70°32' 250.8

5

154.7 3°57'R S82°13'E 90°30' 156.8

4

93.8 13°01'L S86°10'E 12°25' 96.0

3

178.7 26°03'R S73°09'E 180.0 70

2

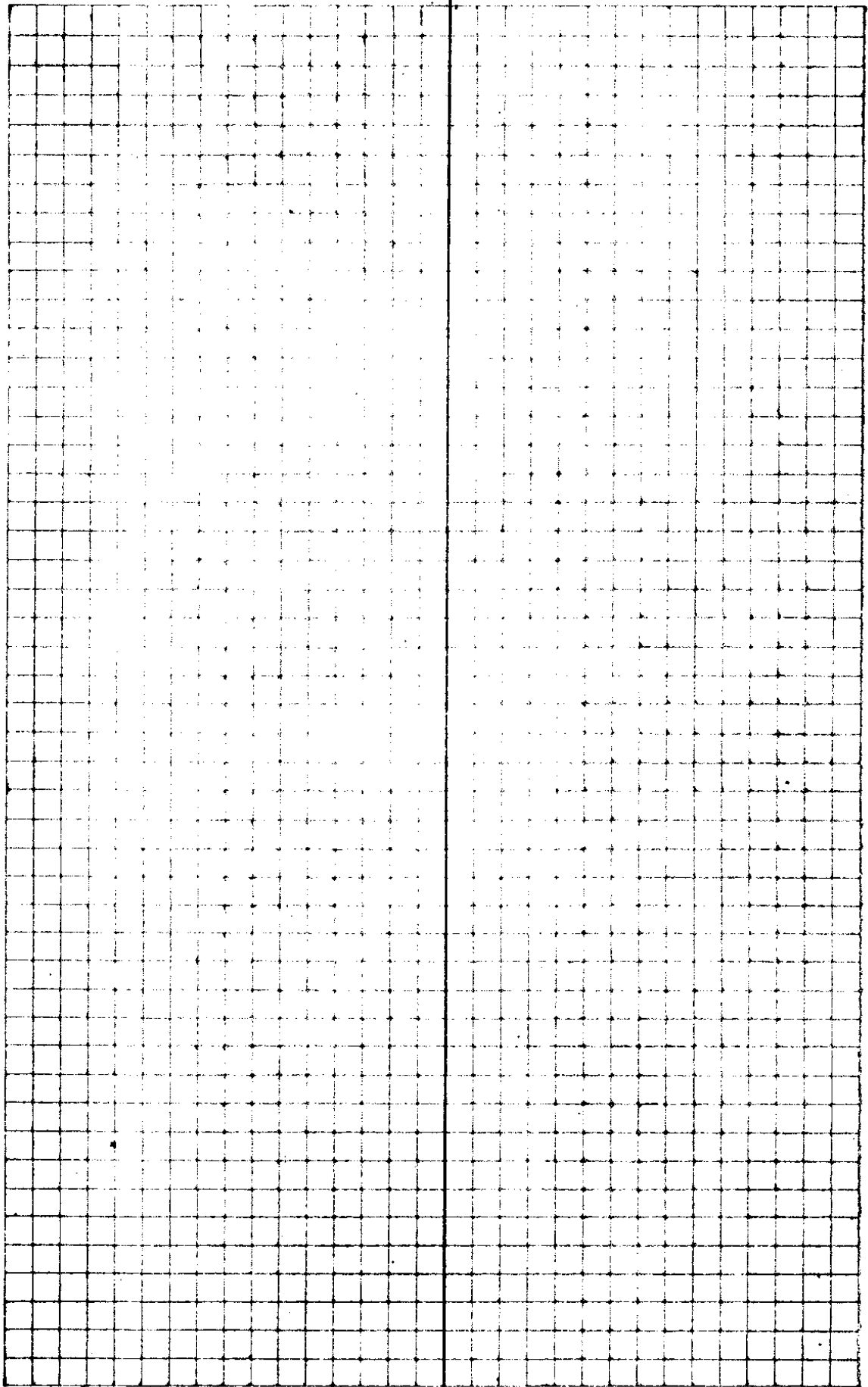
118.0 6°48'R N80°48'E N81°E

1

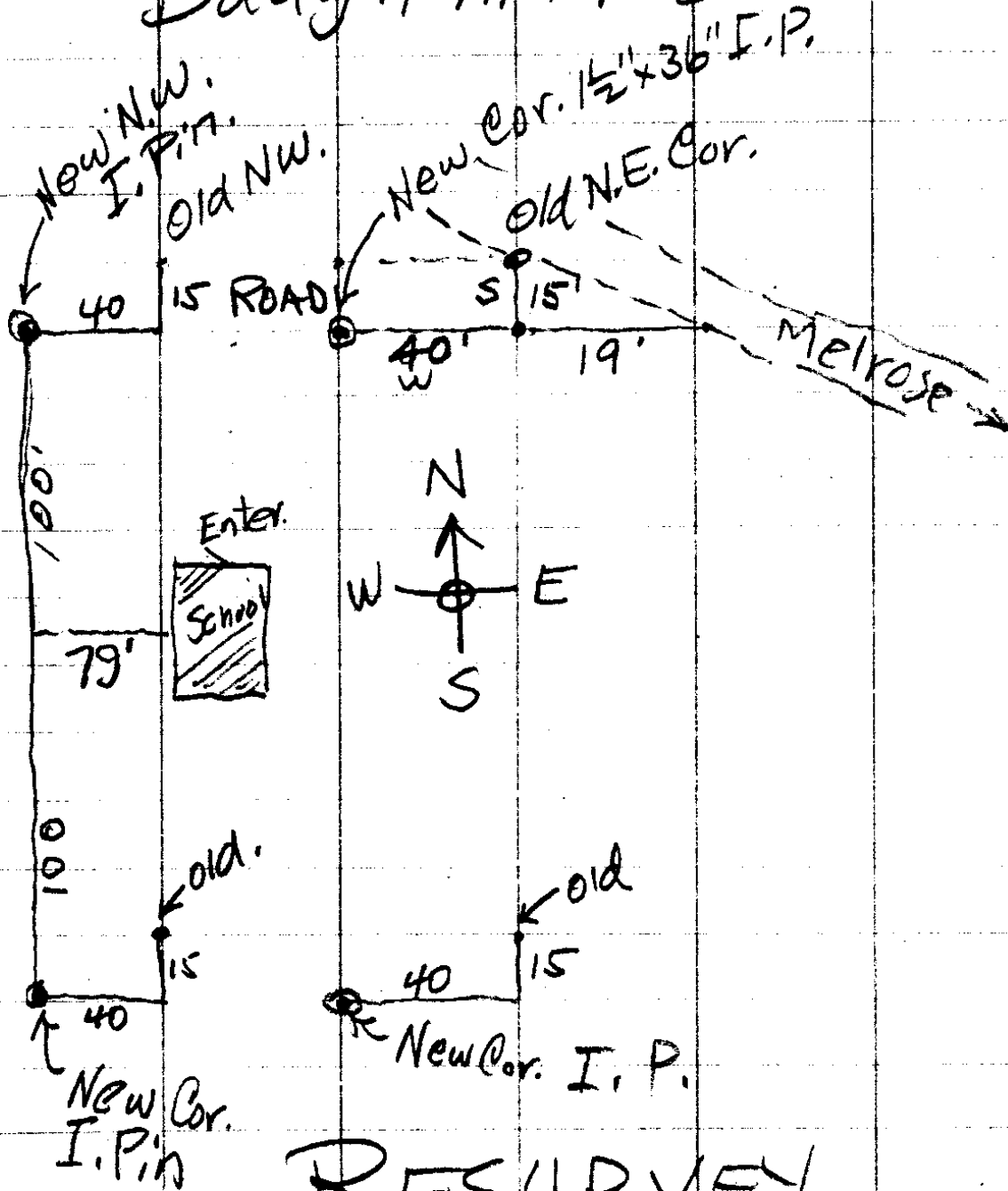
190.4 N74°E

¼ Cor
27-34

18-55



Baughman School



RESURVEY.

Dec. 2 - 1935

F. C. Frear

Gene Richardson

Dexter Baughman

2 School Directors.

Feb. 11-1935

Richardson

Lane

1979
1190
889
<hr/>
4058

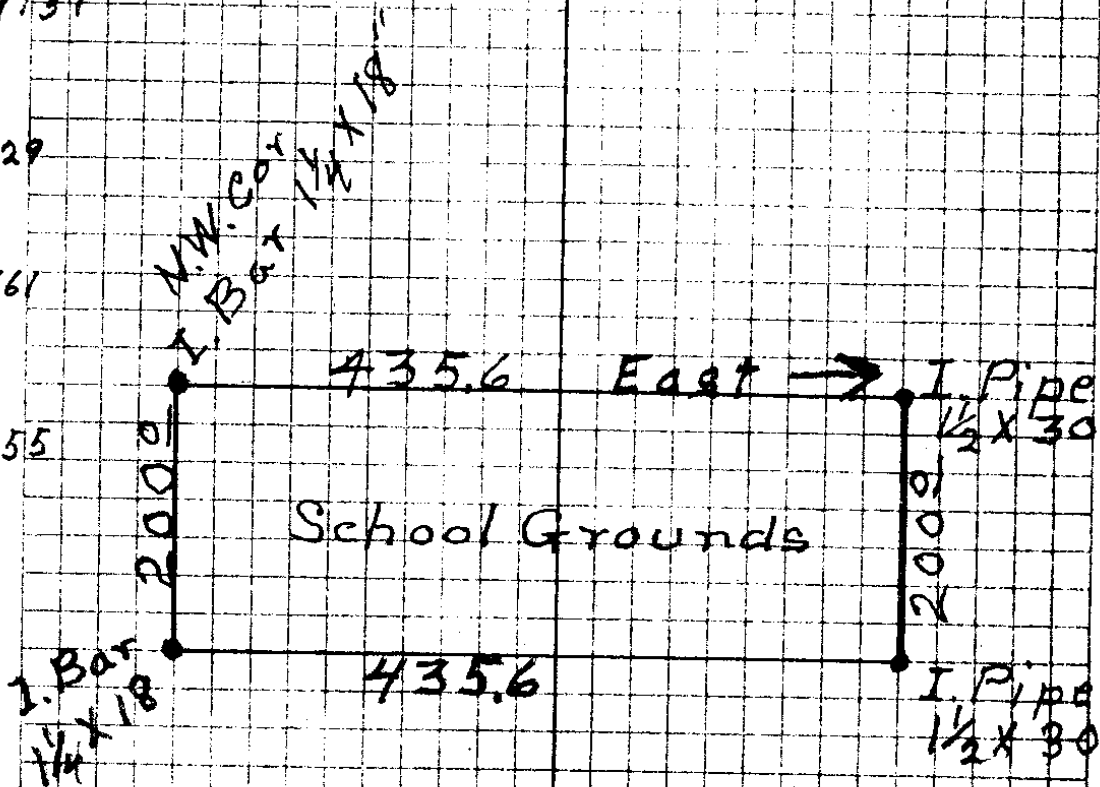
Sec 34 T26 R8W

99137

98629

97661

99255



14-55

CS FILE FOLDER

CONTAINS

MORE

INFORMATION