

MAP
 OF
VERNE SHRUM PROPERTY
 IN
 SEC. 19, 30, 31 - T26S R3W W.M.
 H. L. EPPSTEIN, CO. SURVEYOR
 DOUGLAS CO. OREGON
 MAY 20, 1934
 SCALE 1"=300'

T26S R3W
T26S R3W

ALVIN SCHLOEMAN

NORTH 3317.2

S.W. COR.
D.L.C. N^o 43

N.W. COR.
D.L.C. N^o 45

N.E. COR.
D.L.C. 45

MRS. E. E. BLAKELEY

NORTH 2540.2

INT. L. COR.
D.L.C. 45

EXTERIOR L. COR.
D.L.C. 45

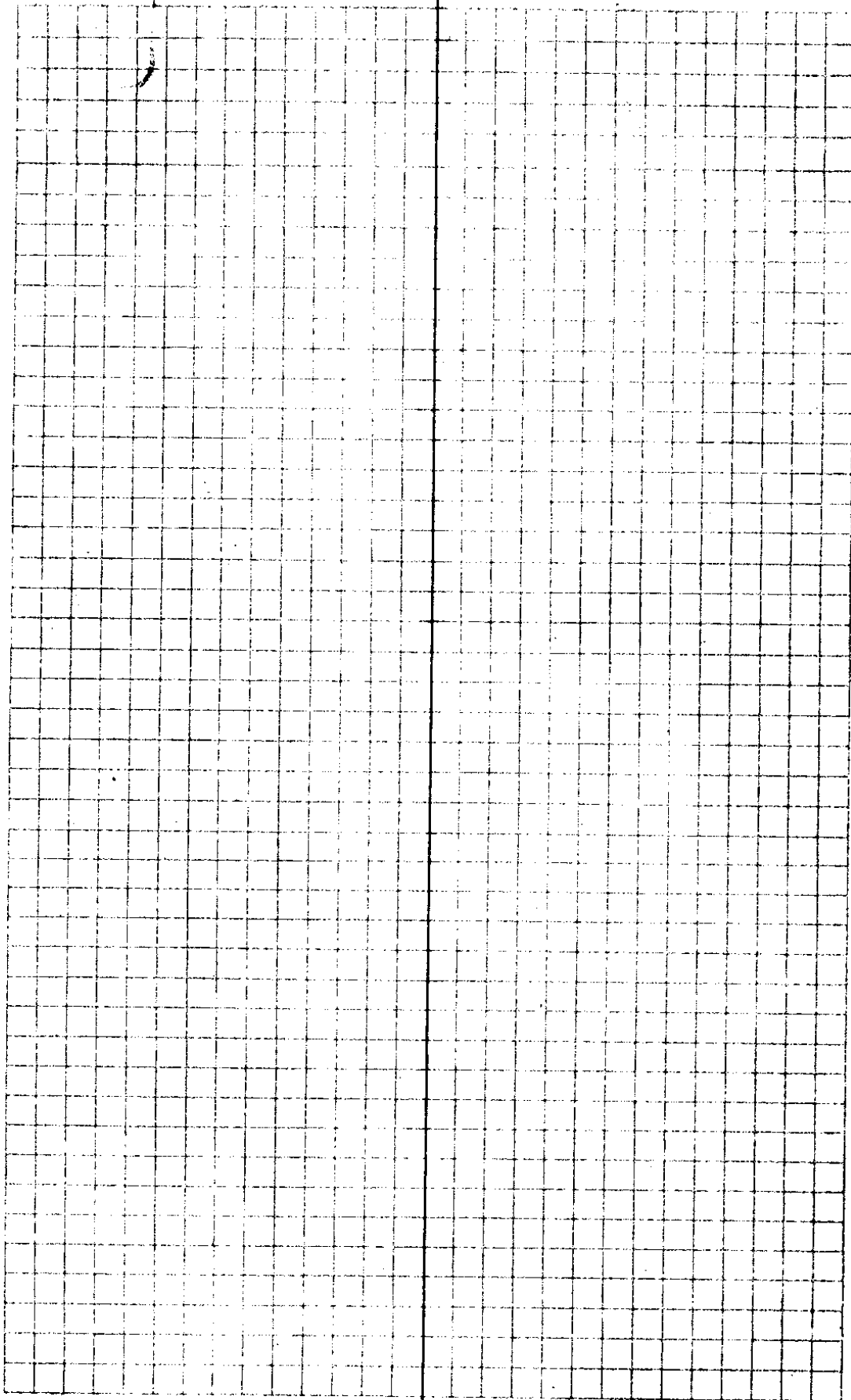
MRS. E. E. BLAKELEY

S.W. COR.
D.L.C. 45

S.E. COR.
D.L.C. 45

M-1-71

Drawer 58



1f-52

Sta	Dist	Ver Ang	Angle	M.C.	C.C.
A 7	1149		1°22'R	N28°E	N32-24E
A 6					
N.W. Coy. C.L. 43	3002	2723	13°		
	918	912	7°		
			77°13'L	N48°30'W	N46-11°W
A 6	1177	1175	3°30'	8°01'R	N24°E N31-02E
A 5	1538	1535	3°45'	11°42'L	N16°45'E N23-01E
A 4	1309			10°49'R	N31°15'E N34-43E
A 3	1986			35°55'L	N20°30'E N23-54E
A 2	2847	2836	5°	4°56'L	N58°30'E N59°-49'E
A 1	2407				N64°45'E N64°45'E
0					

May 13, 1934
 Vernon Shrum H. Eppstein Geo. Casbeer
 C.W. Neal Jr. Eppstein Bert Lane

Remarked

(2)

2 Old Oak Tree

one down on

other tree scribe

marks visible

A Fir N53°E 35 Feet

A Fir S24°E 170 Feet

N.W. Cor. C. 43

James S. Notland

Sta 5 4' Fir

Sta 3 4' Fir

1' From Fence

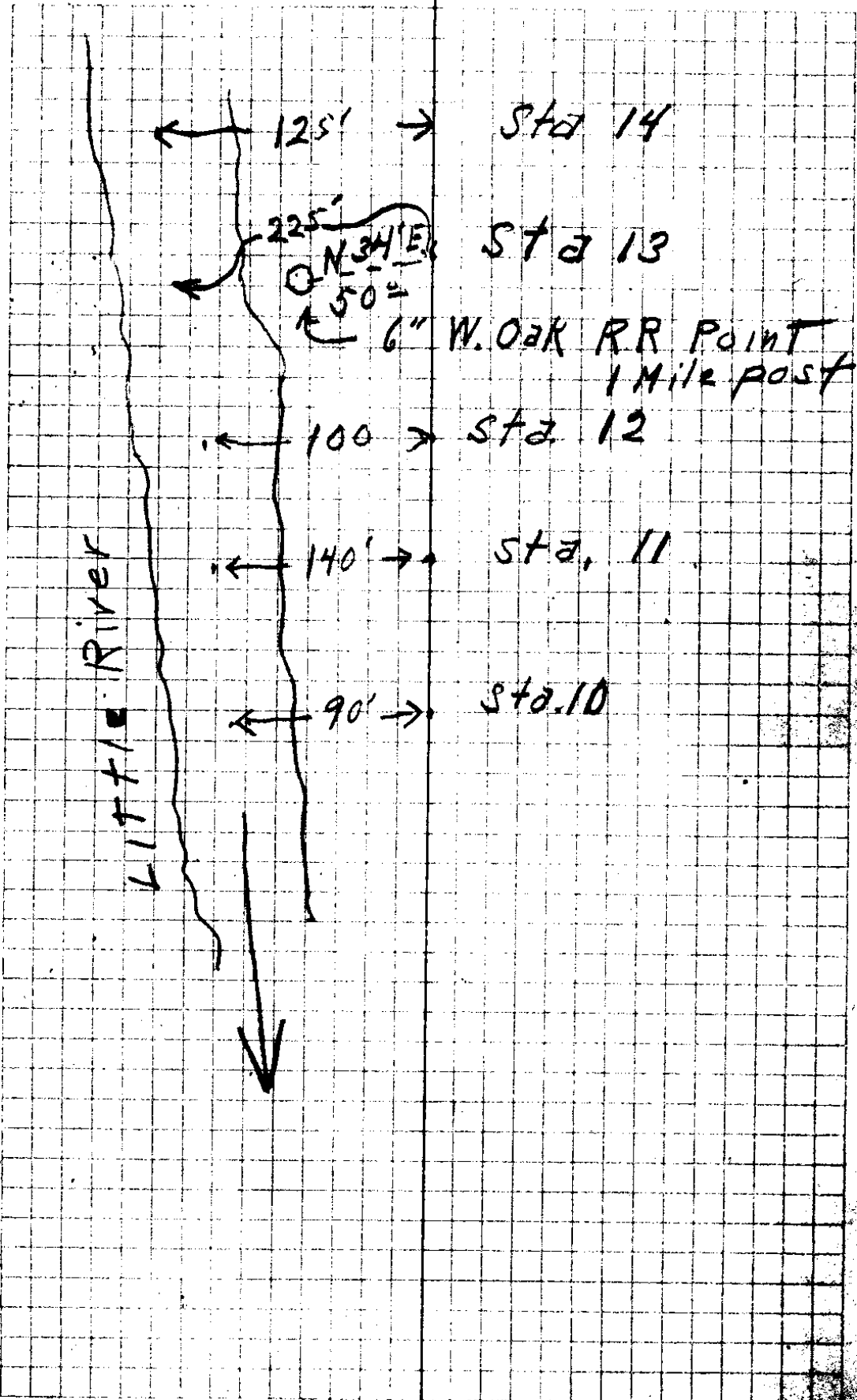
Alvin Creek

18" W Oak
Marked C.S.B.T.

Fence N & S

if/52

Sta	Dist	Ver Ang Verne Strum	Ang	MC	CC
A15 ⑤ 1/2" x 24 Iron Bar	234				45°35' R S 16 1/2° E S 16-52 E
A14	3531 300 651.9	5°30'			18°36' L S 62° E S 62-27 E
A13	4514				20°47' R S 44° E S 43-51 E
A12	1989				25°40' L S 65° E S 64-38 E
A11	2212				52°05' R S 38°30' E S 38-58 E
A10					
Wagon Hub	284				97°15' R S 7° W S 6'-12 W
A10	492 E				25°19' R N 89° E N 88-57 E
A9	273°				12°35' R N 62° E N 63-38 E
A8	26 47				
	1402				18°39' R N 49° E N 51-03 E
A7					



Sta Dist Ver Ang ⁽⁵⁾ Ang M.C. CC
 Verne Strum

5
 1200° 1°59' L S11°30' W S11-23' W

4
 1200° 13°20' R S13°30' W S13-22' W

3
 BACK SITE
 From 3 on 2 Angle to B 42°56' L S43° E } S42-54' E
 SAME

3
 1649 2°58' R N43° W

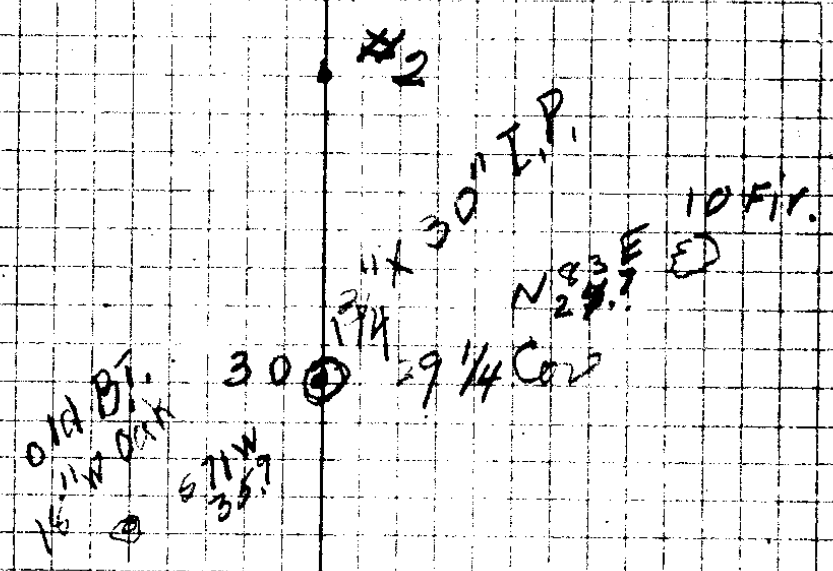
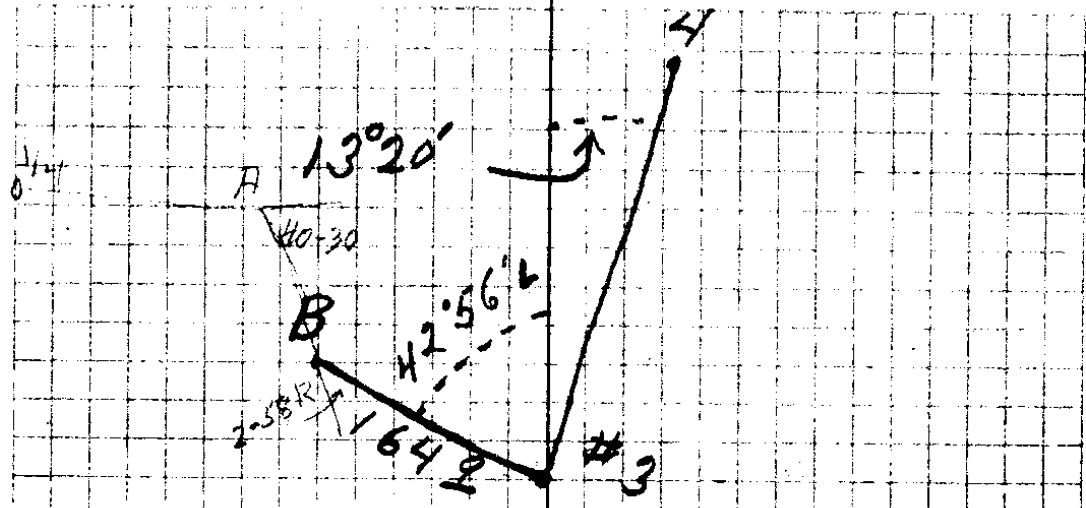
B
 188.3 Level
 117° = 13°30' 40°30' R N46° W S45-52' E
 113.8

A
 300° S86° W S86-22' E
 1/4 Cor Bet 29630

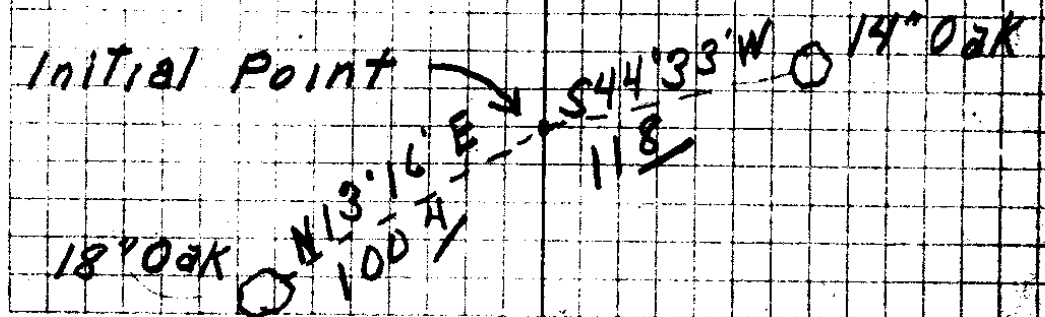
3
 687.8 107°22' R South S0-02' W

2
 210 90° L N72°30' E N72-40' E

I
 645° S17°20' E S17-20' E
 Initial Point

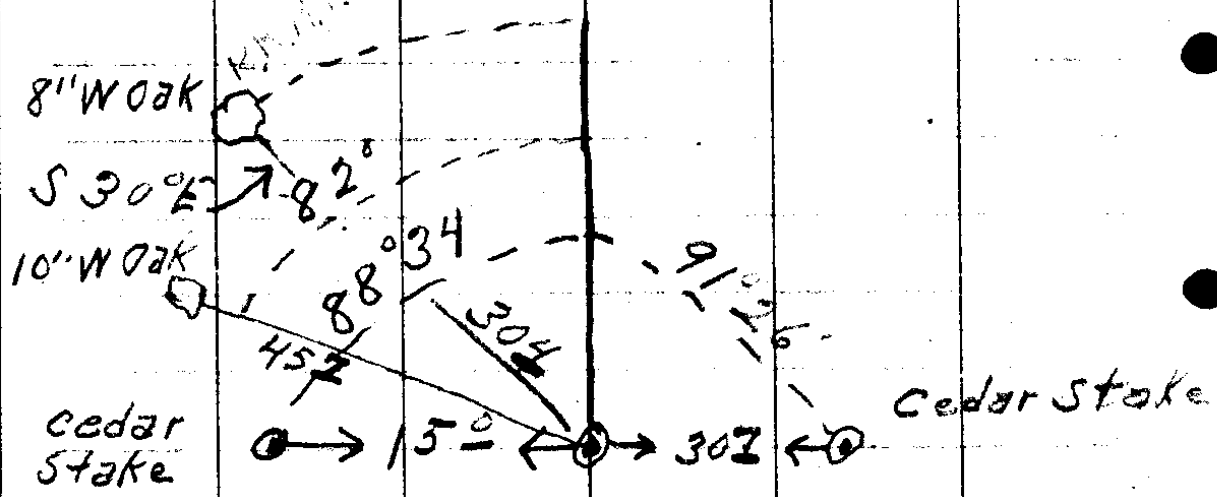


#1 Set over to C of Road R.W. #2



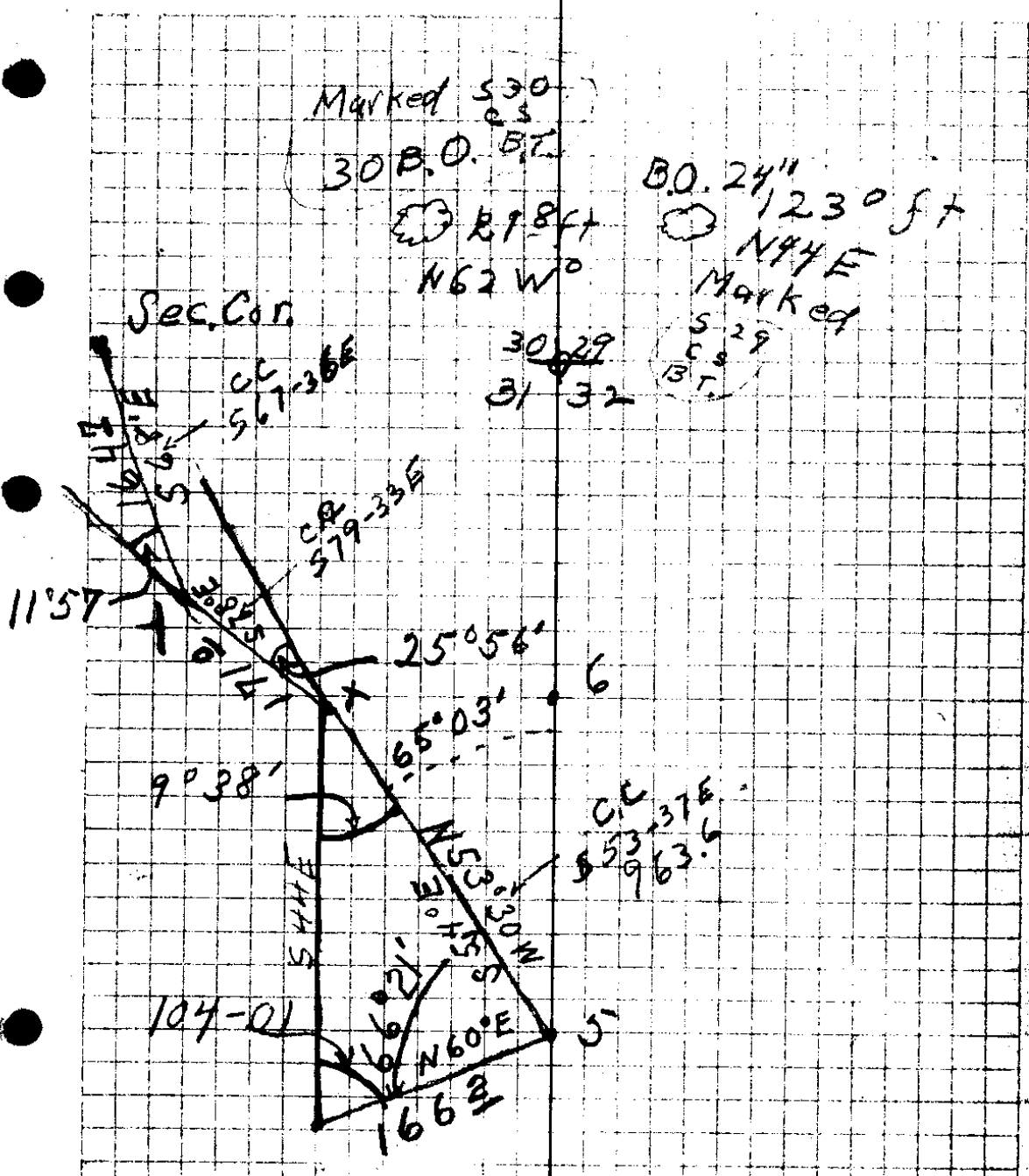
1/1/52

Sta Dist Ver Angle Ang. M.C. C.E.
 Verne Shrum



11	590 \pm	15°42'R	S2½°E	52°-31'E
10	219 \pm	11°30'L	S19½°E	518-13E
9	1489	10°33'L	S7°E	56°-43'E
8	308 \pm	20°11'L	S3½°W	53°-50'W
7	410 \pm	12°35'R	S24°W	524-01W
6	306 \pm	0°03'R	S11°30'W	511-26W
5				

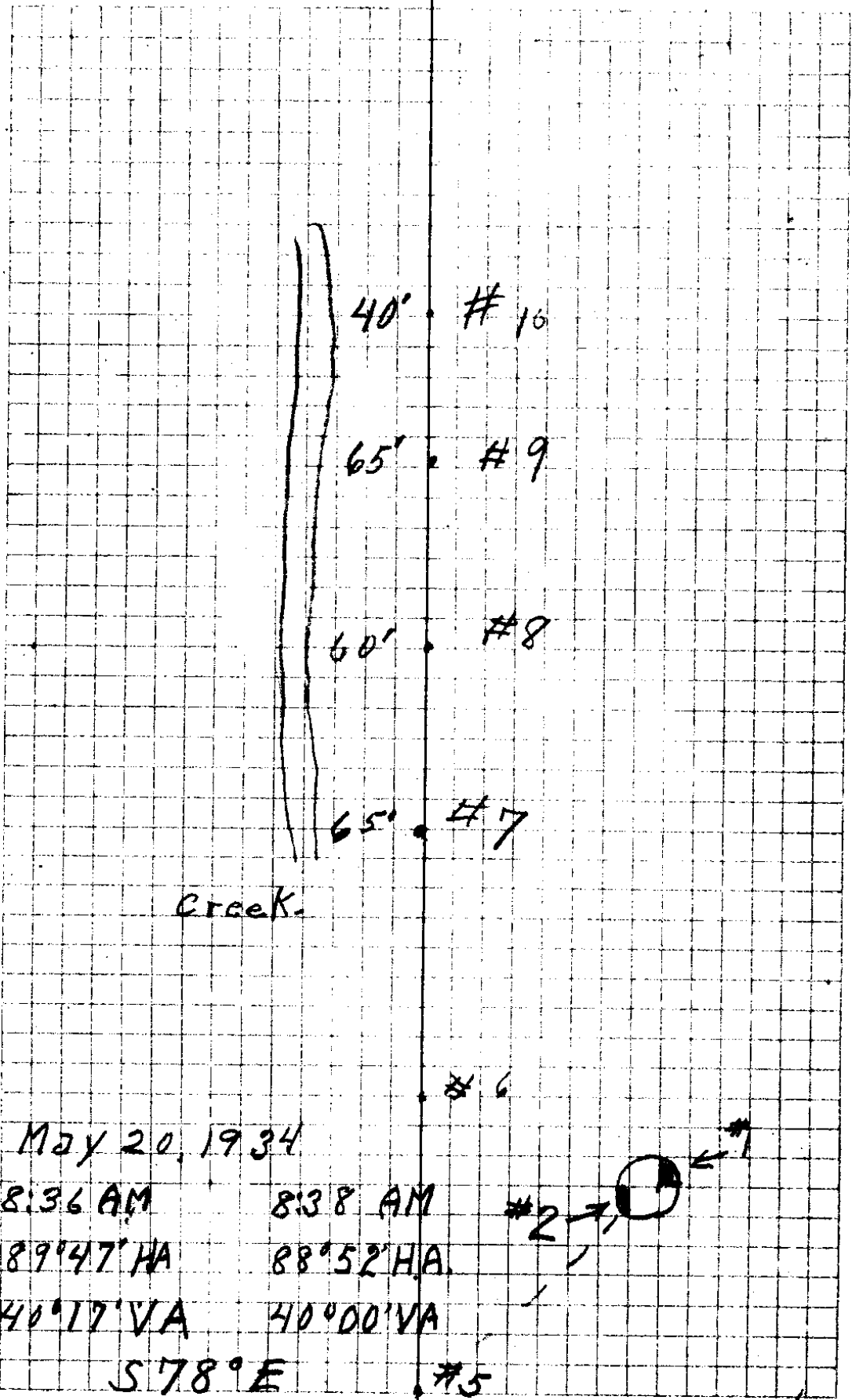
(8) Hub H



May 13, 1934 #6
 4:18 P.M. | 4:18 P.M.
 74°37' H.A. | 75°22' H.A.
 32°10' V.A. | 32°33' V.A.
 I S 87° W 2 #3



11/5



May 20, 1934
 8:36 AM 8:38 AM
 89°47' HA 88°52' HA
 40°17' VA 40°00' VA
 S 78° E

I

2

#5

18/52

Sta Dist Ver Angle Angle M.C. C.C.
 Verne Strum

B.L.C. cor.
 Not Found

154 180

? ?

B.K. site
 # 14E 786⁷

93°53' L South

Cedar Stake
 Across Road

154 307

2°52' L N 88° W S 88-58 W

14C 112 ⁸

84°33' R N 88½° W N 88-10 W

13C 185 ³

18°43' R S 7° W S 7-17 W

12C 235 ^L

33°56' R S 12½° E S 11-26 E

Along
 116 Creek 84 ³

20°41' L S 46° E S 45-22 E

132 ⁹

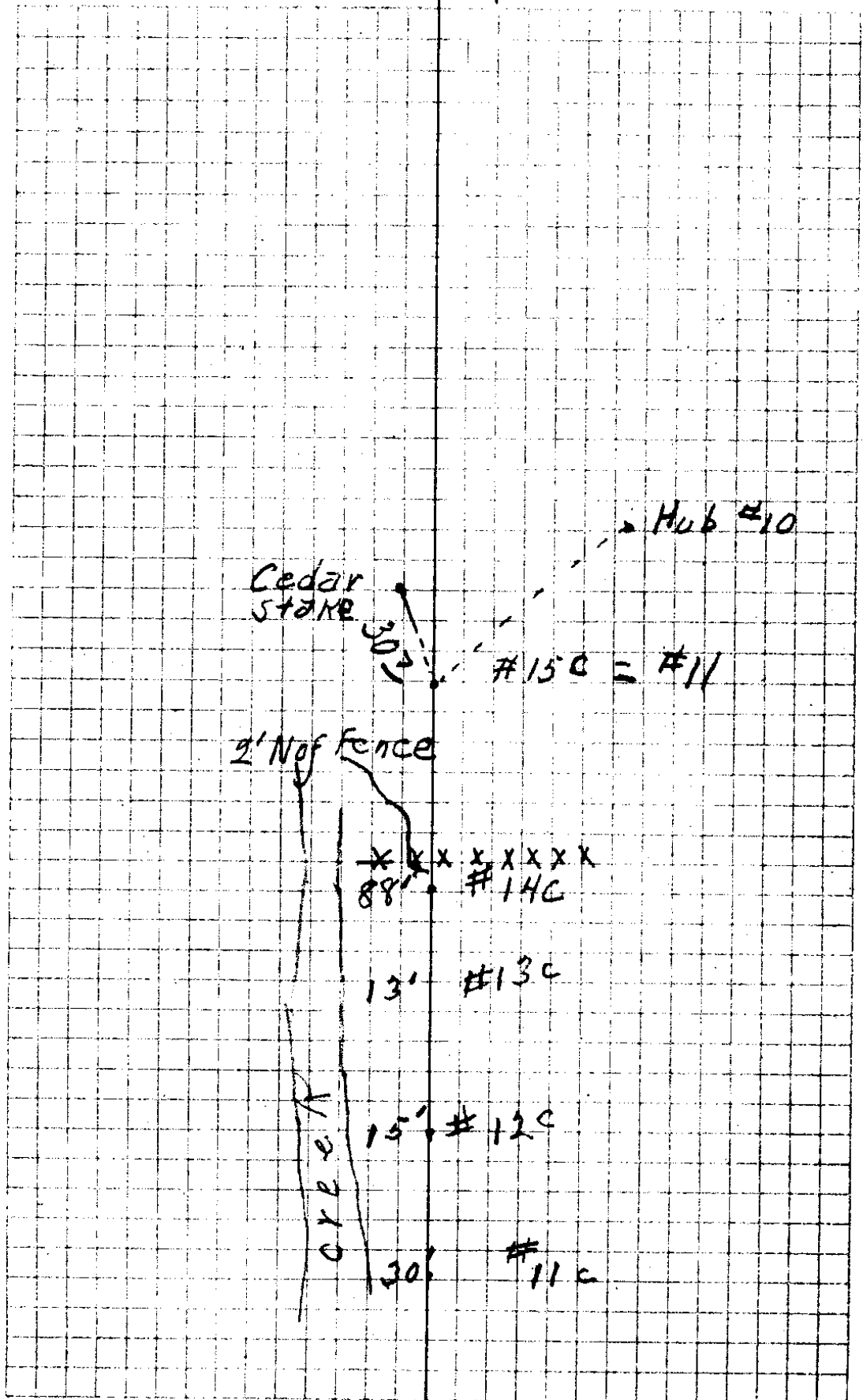
6°28' L S 25° E S 24-41 E

10

S 18-13 E

B.K. site
 # 9

(12) 20-2
180



18/52

Sta Dist Vert Angle H Angle M.C. C.C.
 Verne Strum

#20 300± 12° 35' 4° 03' L North
 120± 10° 30'

#19 64± 8° 25' 2° 20' R N 4° E

#18 300± 147± 0° 11' L N 1° E

#17 2684 4° 45' 92° 01' R N 2° E

Cor Fence Post

45 40° R N 50-13 W

#16 203± 198± 12° 10' 1° 06' L West S 89-47 W

#15 300± 298± 6° 12' 3° 45' L N 89° W N 89-07 W

#14 300± 518± 299± 1° 25' 351± 0° 29' L N 85½° W N 85-22 W
 Level

#13 190± 192± 6° 58' 4° 49' R N 85° W N 84-53 W

#12 4± 300± 297± 7° 42' 1° 23' R N 88° W N 89-42 W
 BK Site 300± 160

#11 288± 589± S 88-55 W

Head Site on Cedar Stake on West Side of Road

14

1670.8

12/52

Sta Dist V Angle ¹³ Angle MC. C.C.
 Verne Shrum

Hob 9A

Set upon
 HoB 10A 26° 09' L S 89° W S 88-57 W

BK site
 on # 4

wagon Hub

593 7' 29 S 88 1/2° W

10A

4 619 4° 34' R N 64 1/2° W N 64-54 W

4

1512 ⁴⁷⁵ 12° 40' 14° 58' L S 80° W S 80-32 W

3

648 6.63 11° 45' 1° 09' L N 85° W N 84-30 W

2

1476 ⁴⁶⁹ 5° 40' 1° 56' R N 83 1/2° W N 83-21 W

1

2107 N 85° W N 85-17 W

NE Cor CL 43

21

223 12° 25' 1° 00' R N 1° E

20

CS FILE FOLDER

CONTAINS

MORE

INFORMATION