

Atterbury

Mar 12 1935

H L Epstein  
Orwin Atterbury  
Foster  
L B Atterbury  
( ) " "

.01599

Marked RP  $\Delta$  3 Jack

10" W OAK

$\square$  5/5E

$\Delta$  1 N 51-30 W

$\square$

Marked RPA 3  
W OAK

3

# After bore

$\Delta 1200$  hr

5.200 hr

221 81-29

$\Delta 4A$

-7-30  
282

2803

$\Delta 3A$

-17-30  
300

130  
2019  
2861 1180

$\Delta 2A$

76 945

941

$\Delta 1A$

7190  
2265

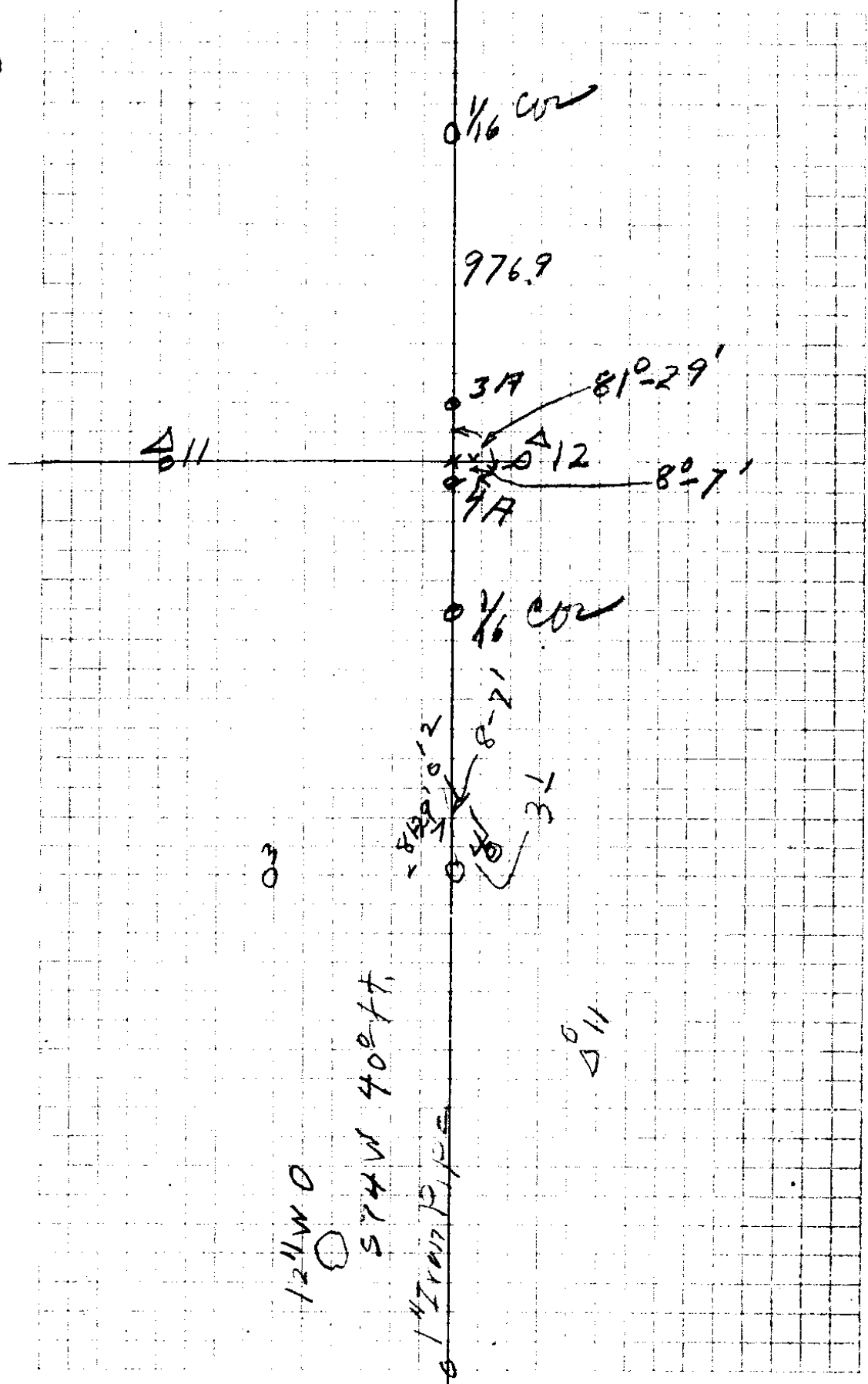
2143

16 000

1006.6  
978.8  
297  
31  
26.6

mmvch

# Atterbury





# A Herby

① Δ12 6-30 160 <sup>5</sup>	159 <sup>5</sup>	26 <sup>6</sup>
Δ11 14-30 255 <sup>0</sup>	246 <sup>9</sup>	24 <sup>4</sup>
Δ10 -17 234 <sup>0</sup>	223 <sup>8</sup>	20 <sup>7</sup>
Δ9 -11-15 186 <sup>5</sup>	183 <sup>0</sup>	16 <sup>9</sup>
Δ8 24-30 123 <sup>2</sup>	112 <sup>6</sup>	514 <sup>0</sup> 478 <sup>2</sup>
Δ7 22-30 157 <sup>5</sup>	145 <sup>5</sup>	512 <sup>2</sup>
Δ6 -18 <sup>0</sup> 112 <sup>6</sup>	107 <sup>1</sup>	59.8
Δ5 -16-30 140 <sup>0</sup>	134 <sup>2</sup>	58 <sup>0</sup>
Δ4 -10 <sup>0</sup> 59	156 <sup>1</sup>	56 <sup>2</sup>
Δ3 +6-30 138 <sup>5</sup>	137 <sup>5</sup>	53.5
Δ2 +17 <sup>0</sup> 62 <sup>2</sup>	80 <sup>0</sup>	51.3
Δ1		

West

4<sup>5</sup>  
4-

1" X 24" Pipe

This image shows a blank ledger page with a grid of columns and rows. The page is divided into two main sections by a vertical line down the center. The left section contains 10 columns, and the right section contains 10 columns. There are 20 rows in total. On the left side of the page, there are five circular punch holes. The page is otherwise blank, with no text or data entered.

CS FILE FOLDER

CONTAINS

MORE

INFORMATION