

21 NW corner

19.50

N 40-30 W 15.37

N 38 W 3.2

N 45-30 W 4.2

N 33-07 E 10.74

3° 35'

N 70 W 5.5

N 66-15 W 21.97 ch

West 20°

SW 1/4 66 SW 1/4 SEC 35

East 40°

South 36.40

N 60-30 E 18.66

N 26-23 W 24.77

S 20-20 W 26.87

S 79 E 70 L 29.25

S 58 E 23.75

East 20°

center sec of 2

A

section cor

23

West 60

22

20

17

14

14

520.00

N 20°

N 40.75

13

N 20 E

SW 1/4

SW 1/4

SEC 35

66

120

West 20°

13

14

15

16

17

18

19

20

21

22

23

24

25

26

27

28

29

30

31

32

33

34

35

36

37

38

39

40

41

42

43

44

45

46

47

48

49

50

51

52

53

54

55

56

57

58

59

60

61

62

63

64

65

66

67

68

69

70

71

72

73

74

75

76

77

78

79

80

81

82

83

84

85

86

87

88

89

90

91

92

93

94

95

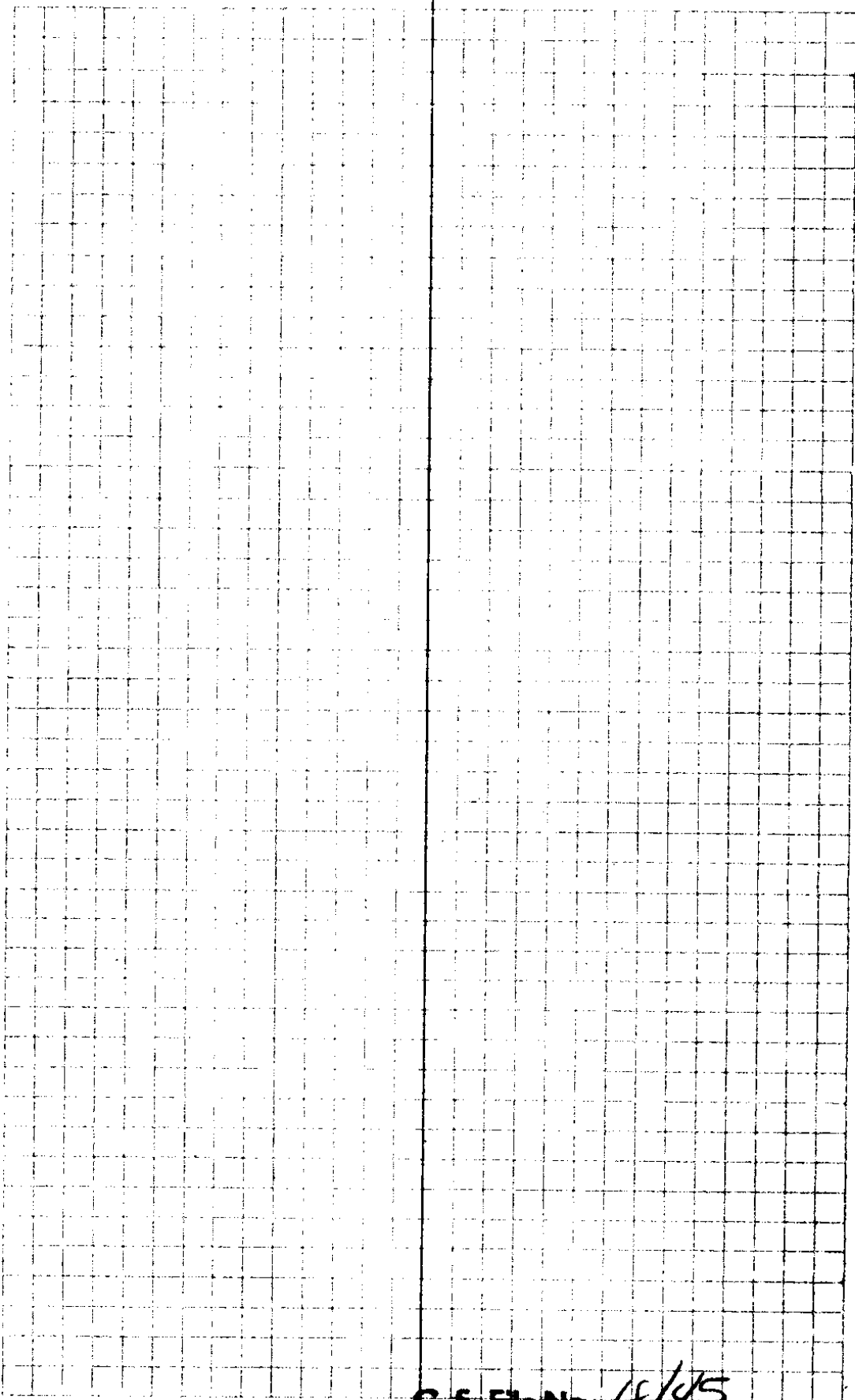
96

97

98

99

100



C. S. File No. 18/45

① Singleton Survey

| Sta | Dist | Lft | Rt | M. | C.C. |
|-----|------|-----|----|----|------|
|-----|------|-----|----|----|------|

Sta A.

706.37

0-27'

524-53W

No. 2

1091.33 17° 27'

S. 24½° W 524-26W

Beg Pt. Hub 1
 { Level 446³ }
 { V.A. -13° 150° } 146?
 8.98 ch

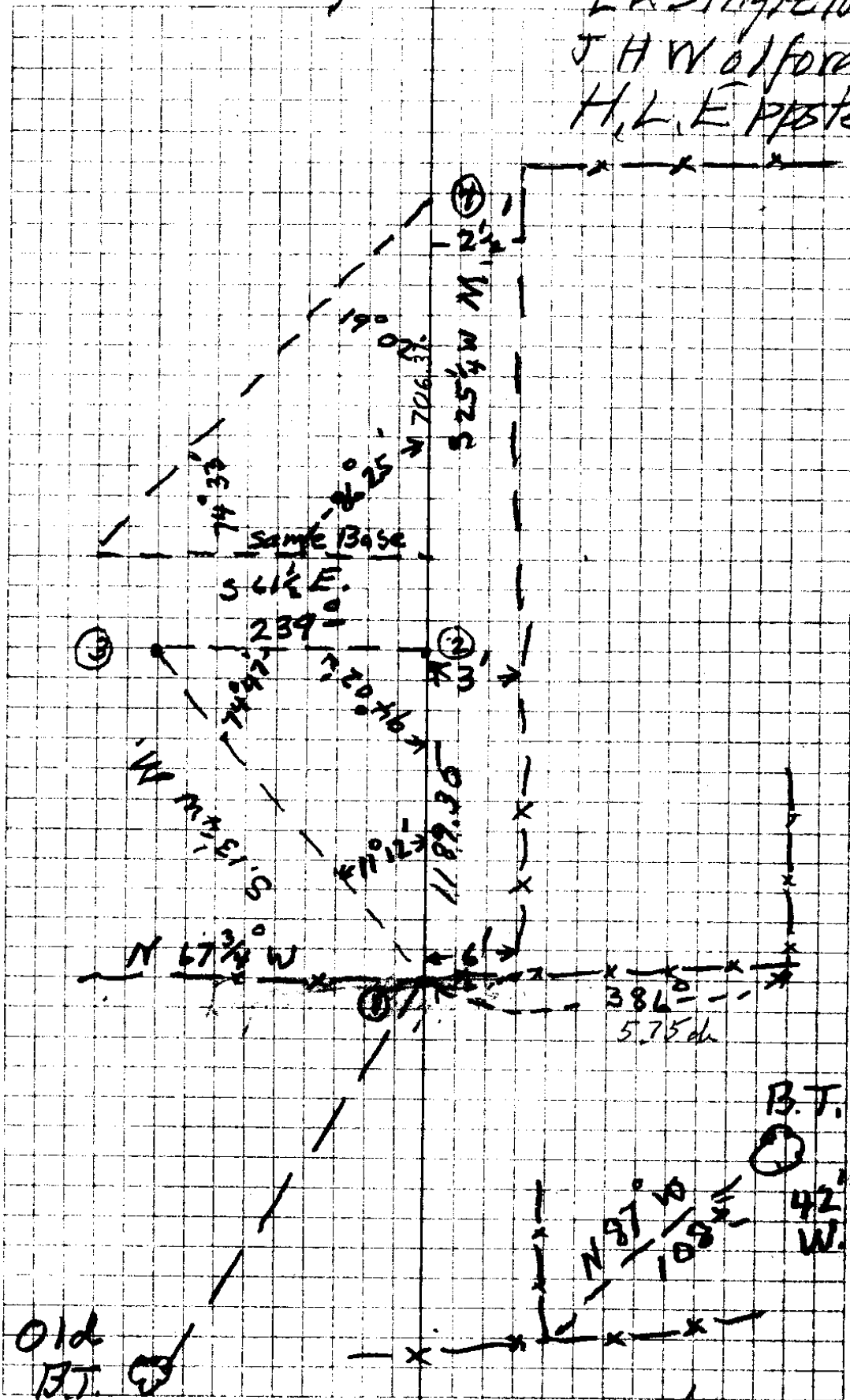
S 41½° W 541-53W

Old B.T. a 2' B.O.
Blaze on N.W. face.

Singleton

(2)

L. H. Singleton
J. H. Walford
H. L. E. Epstein



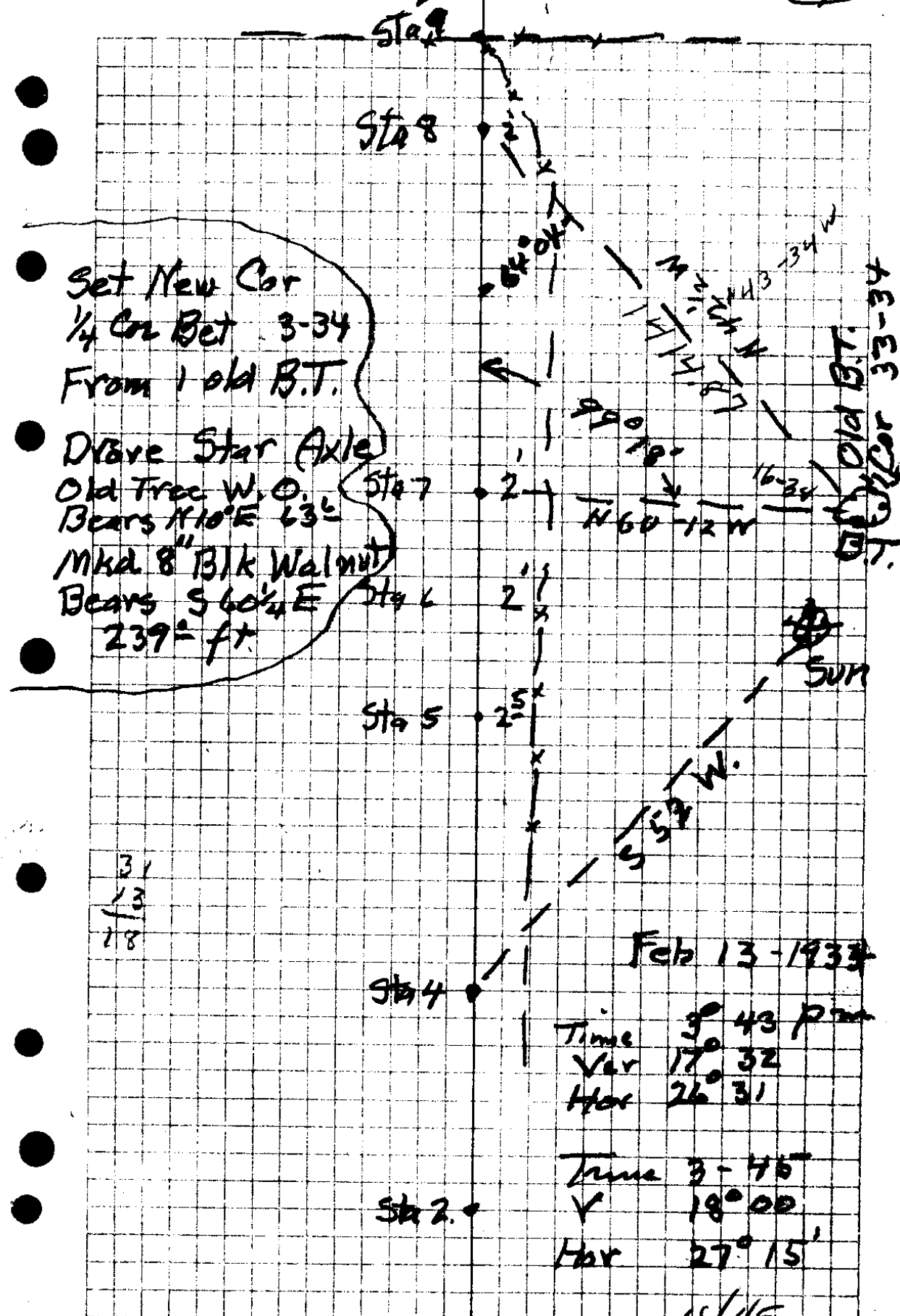
Cor 34-35

C. S. File No. 18/45

| Sta | Dist | Angle | Lt | Rt | M | CC. |
|-------|------------------|--------|----|--------|------------------------------------|-----------|
| End. | | | | | | |
| | 345 ⁸ | | | | | |
| | | | | 0° 18' | S 20 W | S 20-48 W |
| Sta 8 | | | | | | |
| | 410 ⁴ | | | 0° 13' | S 20 W | S 20-30 W |
| Sta 7 | | | | | | |
| | 335 ⁴ | 4° 57' | | | S 21 ³ / ₄ W | S 20-17 W |
| Sta 6 | | | | | | |
| | 92 ⁹ | 0° 29' | | | S 24 ¹ / ₂ W | S 24-14 W |
| Sta 5 | | | | | | |
| | 497 ⁵ | 0° 10' | | | S 25-50 W | S 24-43 W |
| Sta 4 | | | | | | |

18-45
Smythe

(4)



Set New Cor
 1/4 Cor Bet 3-34
 From 1 old B.T.

Drive Star Axle
 Old Tree W. O.
 Bears N 10° E 63'
 Mkd 8" Blk Walnut
 Bears S 60 1/4 E
 239' ft.

31
 13

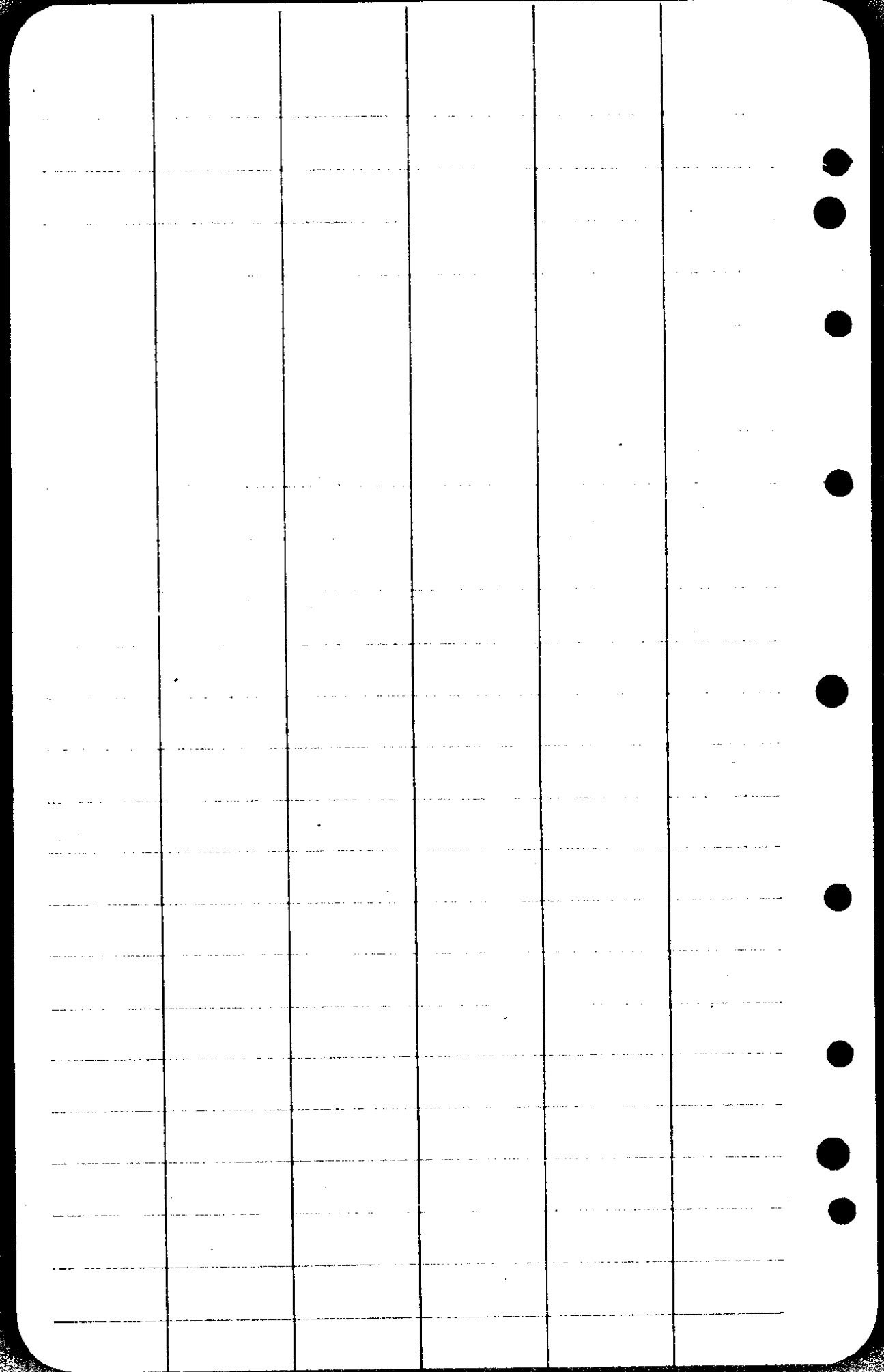
 18

Feb 13 - 1933

Time 3^o 43 P.M.
 Var 17^o 32
 Hor 26^o 31

Time 3 - 45
 Var 18^o 00
 Hor 27^o 15'

C. S. File No. 18/45



CS FILE FOLDER

CONTAINS

MORE

INFORMATION