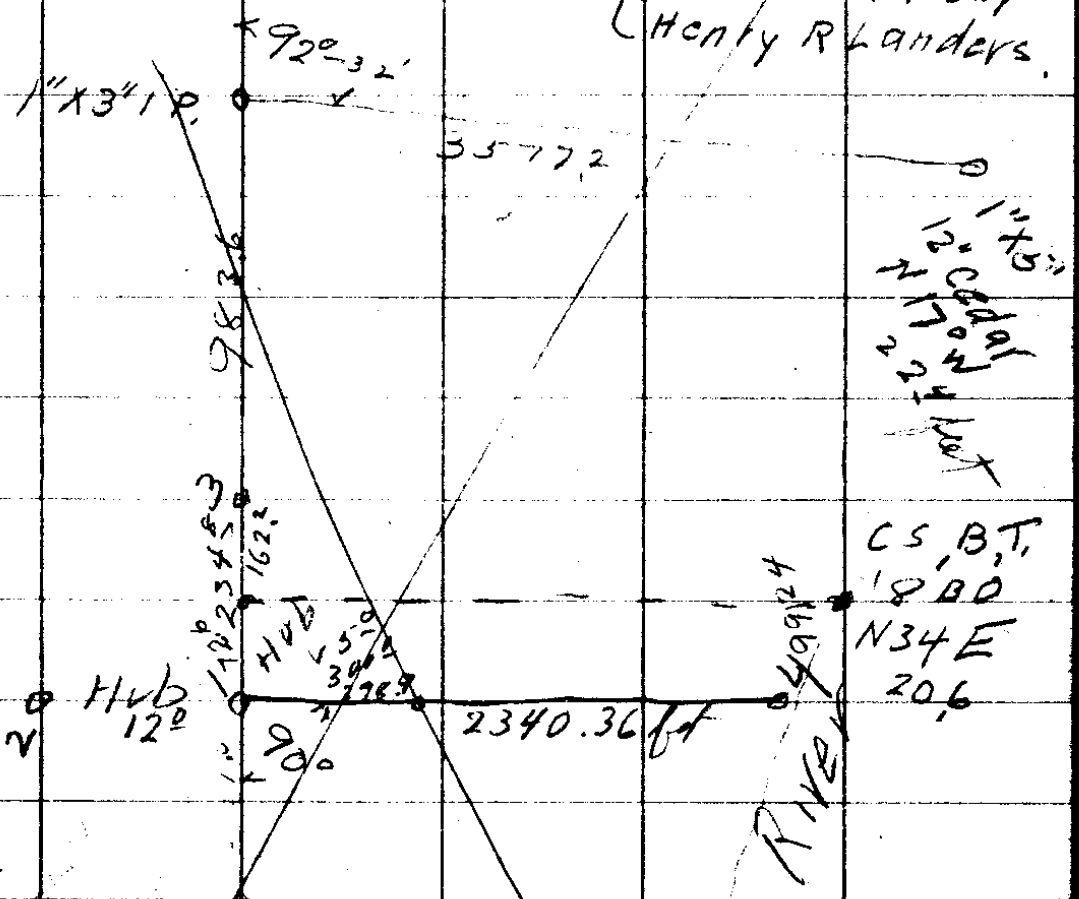


Copied

Heirs { Gertrude C. Hee  
Alice v Armsby  
Henry R Landers.

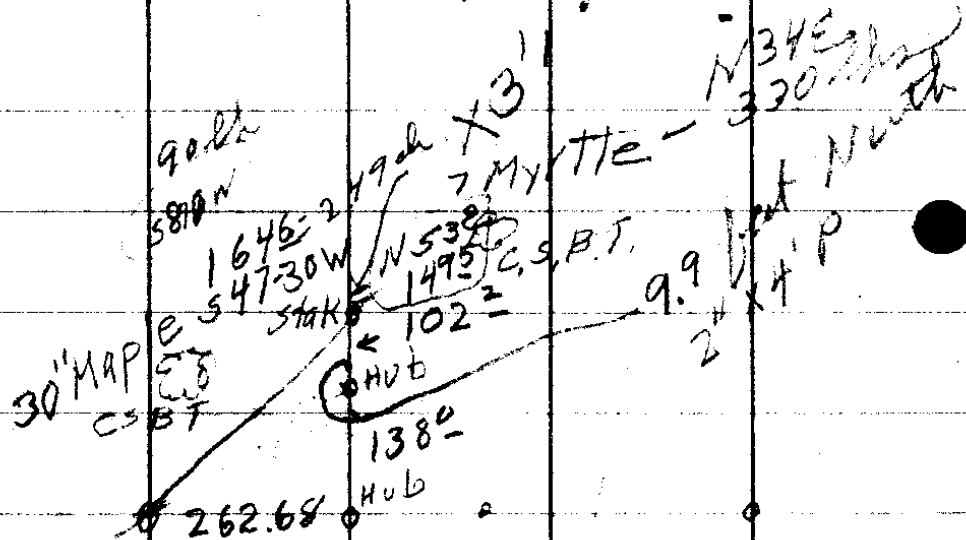


1" X 15"  
120°  
N  
C  
170°  
160°  
150°  
140°  
130°  
120°  
110°  
100°  
90°  
80°  
70°  
60°  
50°  
40°  
30°  
20°  
10°  
0°

CS, B, T,  
1800  
N34 E  
20.6

# Conn Bvds.

1



P29  
 88-31

W.T.  
 262.68

Set 1 1/2" x 10" From 8" B.O  
myrtle 316

(87.2 feet more than called)  
for

EW0

N 64 W  
912

938  
N 70 E

8" W O

Nail  
1 1/2 x 1 1/8" IPH

15 B O

18 Lave NIE  
1440

N 35 W NE Co  
1273 Nail 1 1/4" x 20"

64.2  
603  
11.

9.14  
5.5  
1.5  
8.3.54

10/29

3

cov

1582-11-28 L

N47E

1 D

531<sup>3</sup>

58-19 R

N60E

Δ

355

in front of old Hub

4

$300$   
 $\sqrt{52} \sqrt{104}$   
 ch 215 275  
 $2142 \quad 270.8 \quad 4866.6 \quad 239.8$   
 35.5 mru

N 50 E  
 N 15 W  
 S 60 W

WT 1620 S45W 30 Maple  
 " 1539 N53E 7 Myrtle

1/39

5 Δ 7	89°	87-07	S 87 W	S 87-54 W
Δ 6 NW Crv 12 91102				
By sec Δ 5 C01	80°	179-28	NO-30 E	NO-51 E
2 East to stone				
2640	180-03		N1-E	N1-23 E
1/4 Crv Δ 4				
	1260.	180-02	NO-30 E	N1-20 E
Δ 3				
	1300.	180-47	N1-30 E	N1-18 E
Δ 2				
	80°	179-46	NO-30 E	NO-31 E
Δ 1				
	782.5	90-48	NO 45 E	NO-45 E
Δ 5 EC Crv				
	562.3	180-05	East	East
Δ M D. Crv.				
SW Crv				

6

603 ↑

Lat = 43-14

Time AMP 35:30

Hor 52° 10

Ver 24° 02

Time AMP 36:10

Hor 54° 54

Ver. 24° 39

Needle 5/35-38E

4'-7" to SE cor  
from old IB  
on other side

SE cor

M 4

SW

91° 23' ↓  
180-05 ↓  
west

SE  
1/39

7

Δ16

COMM

1400°

180-17

S1-30W S1-23W

15

Fence  
6' west

650°

180°-00

S1W S1-06-W

14

1686

180-16

~~S2W~~ S1-06W

Bar-3

WEST

Hub B

49.3

133-08

S0-30W S0-50W

Δ12 Bar

N W Cov

450°

205-07

S47-15W S47-42W

Δ11

57<sup>z</sup>

154-07

S22W S22-35W

Old Lot

Δ10

357<sup>z</sup>

171-28

S46W S48-28W

Δ9 I.P.

300°

166-50

S56-30W S57-00W

Δ8

245

162-8

S70W S70-08W

Δ7

9

18/39

8

HPT

Track  
19

603.2 89-37

East N89-54E

2 west

2100 178-18

S1°W 50-17W

Δ 18

4 Fines

2800 180-44

S2-30W S159W

Δ 17

1026<sup>5</sup> 179-52

S2W S1-15W

Δ 16

3 Fines

9

Belt 2 West.

18/39



CS FILE FOLDER

CONTAINS

MORE

INFORMATION