

sta Dist Angle Beam C.C.

137
94.7
231.7

S.E. Cor
Δ 1

N.E. Cor 86° 83° 48' R S 43° W S 27° 28' W
Δ 9

127.6 6° 33' R S 56° E S 56° 20' E
Δ 8

231.7 14° 26' R S 61° 30' E S 62° 53' E
Δ 7

N.W. Cor 55° 96° 12' R S 79° 30' E S 77° 19' E
Δ 6

S.W. Cor 60° 63° 03' R N 7° E N 6° 29' E
Δ 5

59° 31° 39' L N 87° 15' W
Δ 4

190° 3° 49' R ^{56°} N 57° W N 56° 34' W
Δ 3

100° 0° 13' L ^{out} N 60° 38' W N 60° 23' W
Δ 2

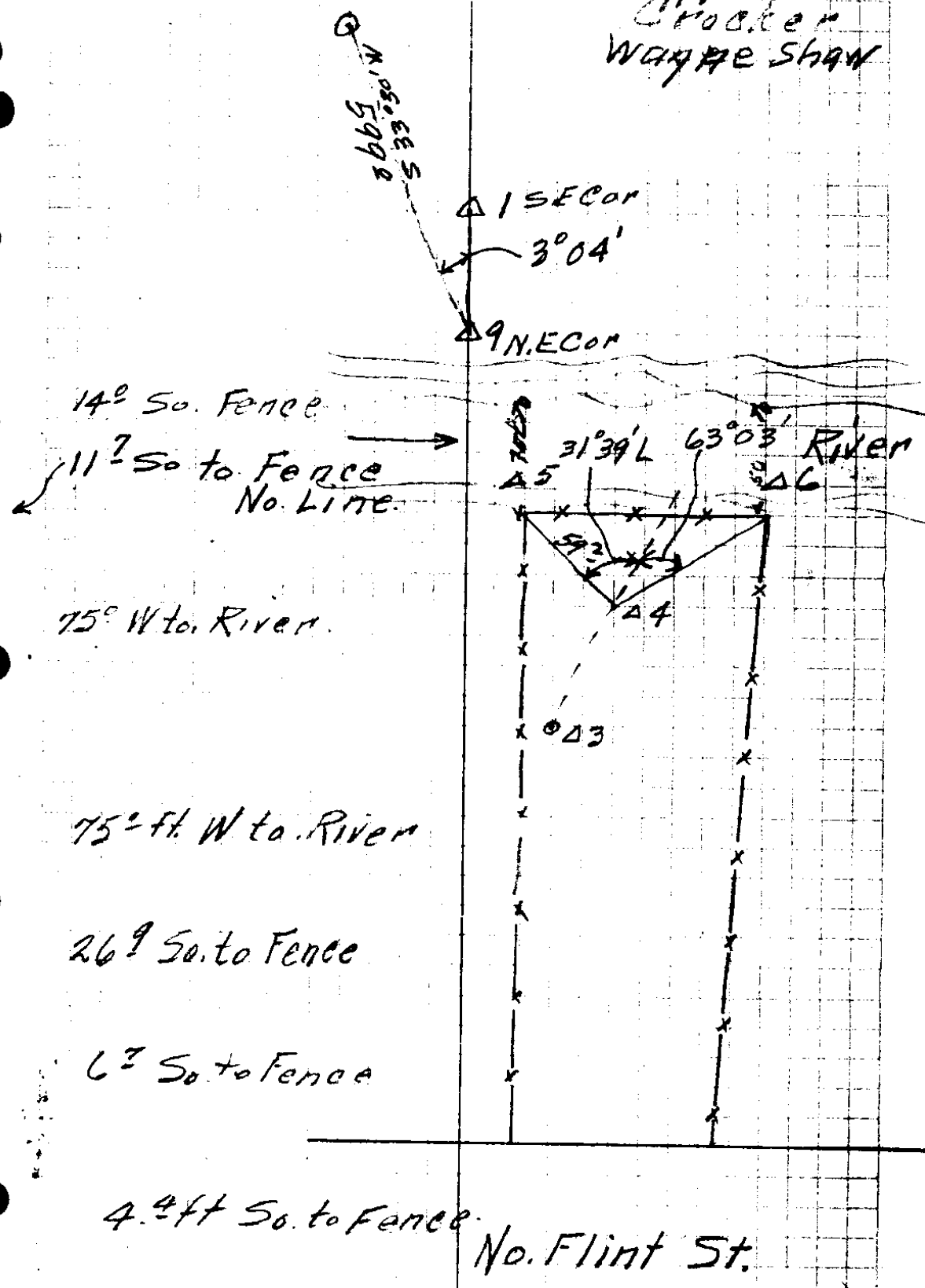
102° 87° 40' L ^{Interior} N 55° W N 60° 10' W
S.E. Cor
Δ 1

N.E. Cor. 86° N 33° E N 27° 30' E
Δ 9

Mrs. G. Reed
128 N. Flint St.

18-38 Nov. 10, 1933

Eppstein
Crocker
Wayne Shaw



14° So. Fence

$11?$ So to Fence
No. Line.

75° W to River.

75° ft. W to River

26° So. to Fence

6° So. to Fence

4.4° ft So. to Fence

No. Flint St.

CS FILE FOLDER

CONTAINS

MORE

INFORMATION