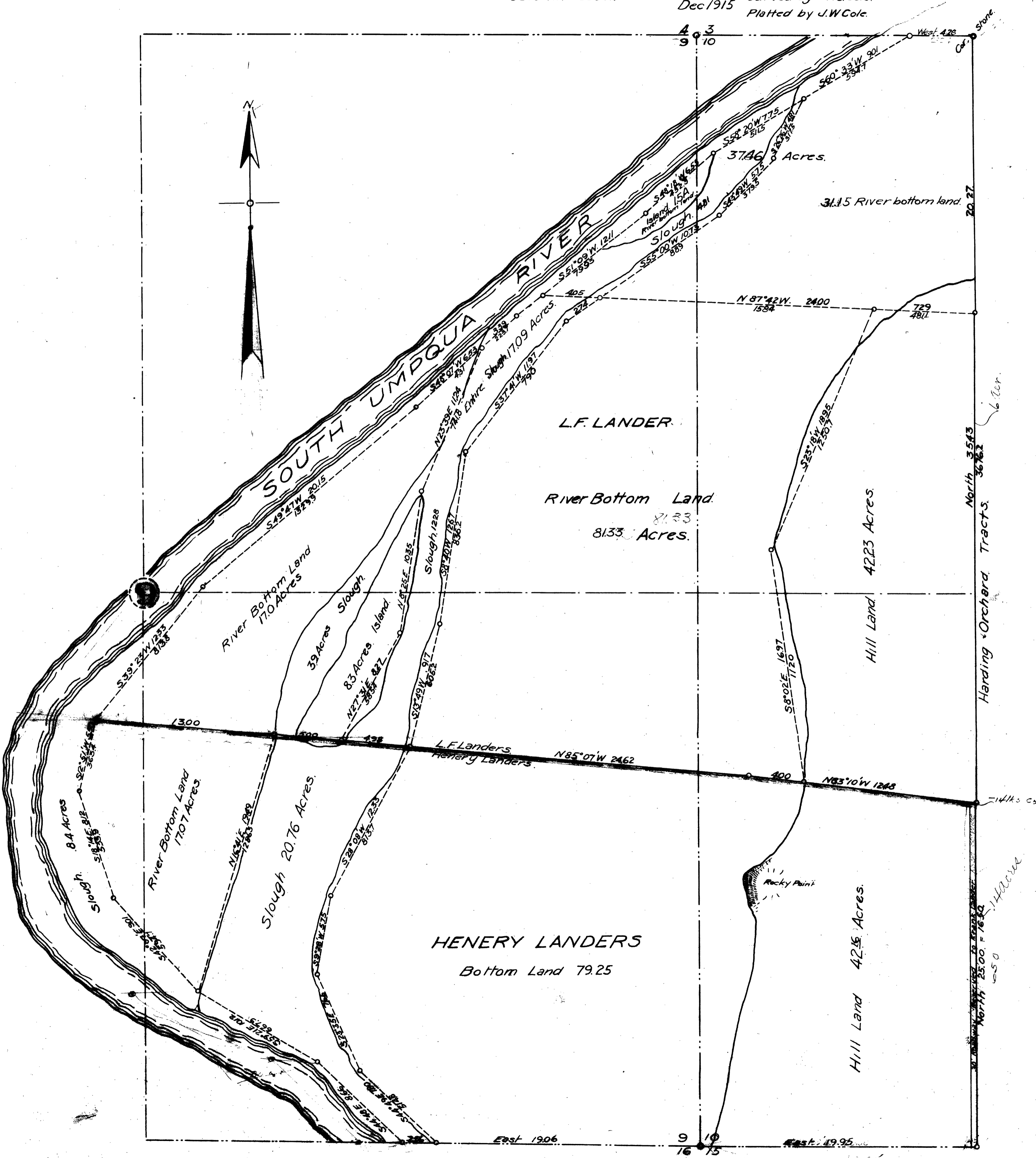


MAP SHOWING AREAS OF
HILLS SLOUGHS AND RIVER BOTTOM LAND
CONTAINED IN THE
RANCHES & HENERY & FRANK LANDERS

Located in Sec's 9 and 10 T. 28.S. - R. 6.W. W.M.
Scale 1 in = 300 ft.

Dec 1915 Surved by F.J. Cole.
Platted by J.W. Cole.



CS FILE FOLDER

CONTAINS

MORE

INFORMATION