

91731 Freagr Road

O+OD Front Road

Arendal Cor.

Triangle Sta

Rose

Center Co. Road

Cent. River 200 FT

Left bank 66'-30' from C.R.

1250

200

200'

(3)

DLC

669.9 47-05 L 50°-13E

Δ 20 NW

1714 N = W 7°-10' L 546-52 W S 47 W NEW
~~1913~~ 6-40 L S 47-14 W S 44 W

Δ 19

339.1 7°-58' L S 54-02 W S 51 1/4 W

Δ 18

354.6 1°-36' R S 62-00 W S 59° W

Δ 17

195.4 19°-46' L S 60-24 W S 53-30 W

Δ 16

376.8 5°-58' L S 80-10 W S 76 W

SW COR
DLC 56

T 27-6

222.0 1-40 L S 86-08 W S 82 W

Δ 15

257.4 4-03 L S 87-48 W S 88 W

Δ 14

221.2 5°-13' R S 88-09 W S 88 1/2 W

Δ 13

229.7 72°-04' L S 86-38 W S 83° W

Δ 12

1064/0/11 1595
38-07 R S 21-18 W N 24 3/4 W

Δ 11

5

Sta

Dist

L

C.C.

M.C.

B

1890, 1869
8°30'

13°38' L

N76°E 178-18E

A

100.4
102 ³/₁₁ 012

4°57' R

N89°E 588-04E

△ 10

N86°59'E

A 9

N. Fullerton
T 27 S. R. 6 W.
May 1935

H.L. Eppstein
Frank Cain
N.E. Richardson

①

Sta Dist. L C.C. M.C.

Δ 11 ^{176' x 3-15'} 176' 146-24L N59-25W N62 W

Δ 10 ^{152' x 16-30'} 146' 115005 64-56R N86-59E N84 E

9 Δ 1082 62-55R N28-00W N31 W

8 Δ ^{300' x 10-43' x 12-6' x 14-35'} 114' 0-05L S88-59W S83-30W

7 Δ 33' 103-37L S89-04W S84° W S84-48W

6 Δ 57' 16-52L N12-49E N10'E

5 Δ 137' 2-56L N29-83E N28½ E

4 Δ 290' 12-53L N32-29E N36½ E

3 Δ 396' 2-55L N45-22E N49° E ^N40-06

2 Δ 457' 42-21L N47-37E N49½ E N42-21E

1 Δ 35.7' N89-58E West

N.E. Coy
Lindsey

18-36

N. Fullerton

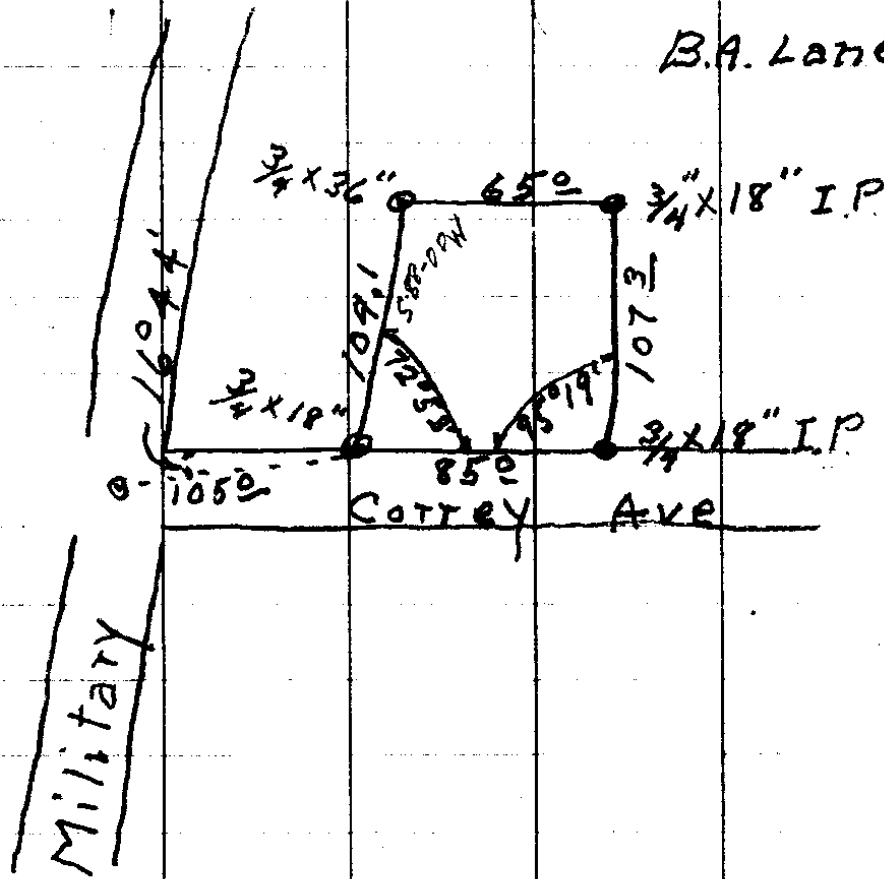
N. Fullerton
Church

May 7-1935

H Leppstein

NE Richardson

B.A. Lane



N. FULLERTON

H LEPPSTEIN

JERRI RICHARDSON

SEPT. 27, 1933

Monument

30'

57^E

36-2416

6-30E

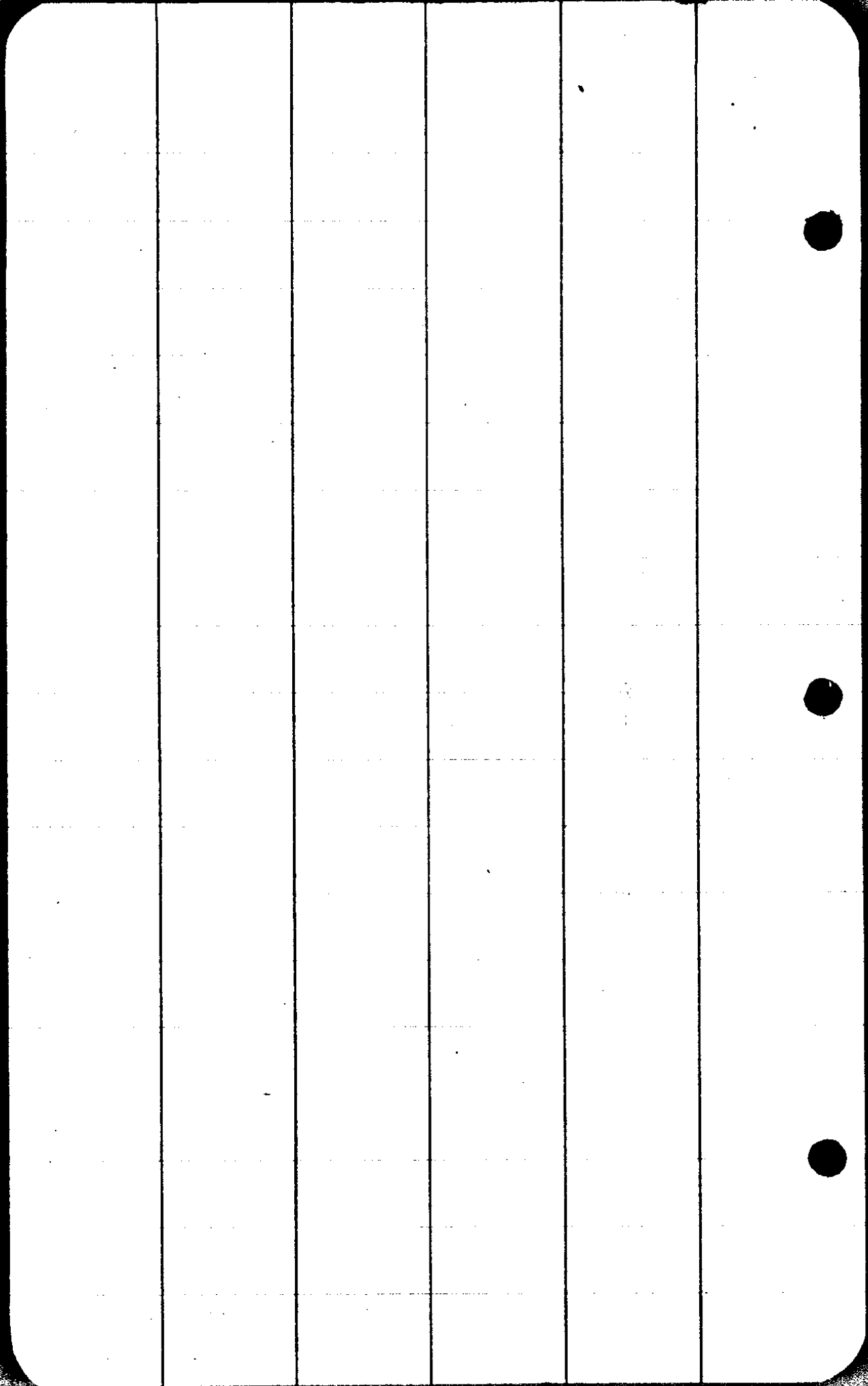
60

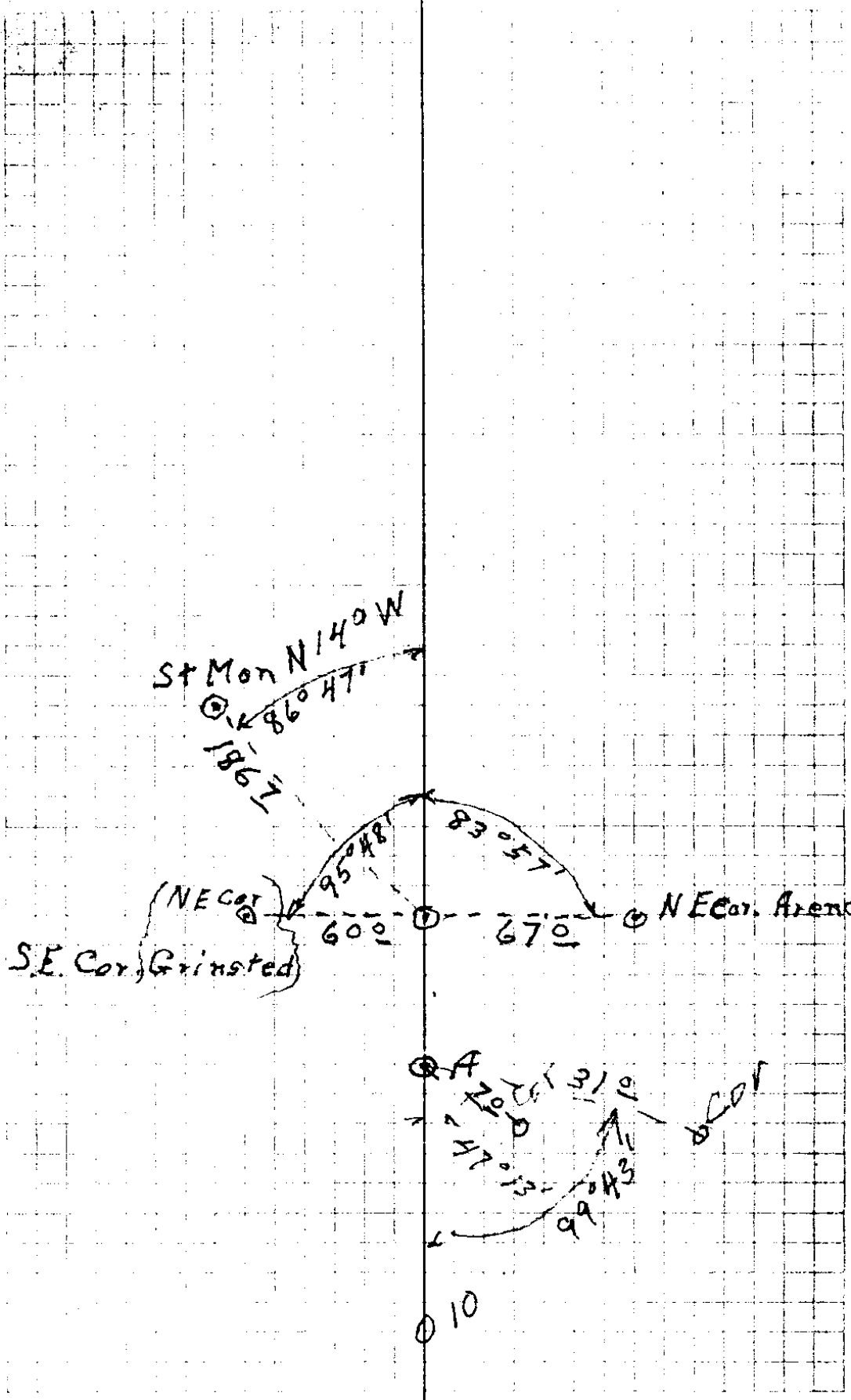
30'

CORCY

Monument

H-36





8

[Faint, illegible text on graph paper]

18-36

9

Fullerton

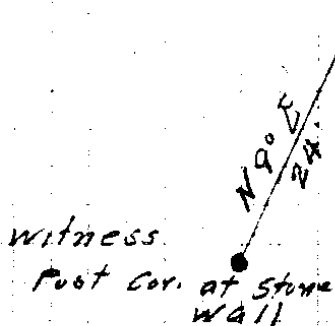
Sta	Dist	Ang. Lt. Rt	M.C.
+			
Iron		99-00	S 21-E
Scp NE			
	1333	4-20LT	N 60-E N 60 E
Stone			
	51	98°53' 80°57LT	N 64°20 E N 60 E
POT			
	225 ¹	Reversed course	S 16-47E S 26 E
To SW Cor			
NW Cor			
	289 ⁹		N 16-47W N 25 ²⁵ W
Iron Pipe		11°15'LT	
	145 ⁶		N 5-32W N 10° W
To on Δ6		18°13L	
		Back Sight on #5	N 12-41E

Fullerton

(10)

5' 0" --- 65' 0" MC
4" E WALNUT
N 79° W - 8' 0"

sand stone Mon.



N.W. Cor. of Church Lot

SW. Cor. of Church Lot

CS FILE FOLDER

CONTAINS

MORE

INFORMATION