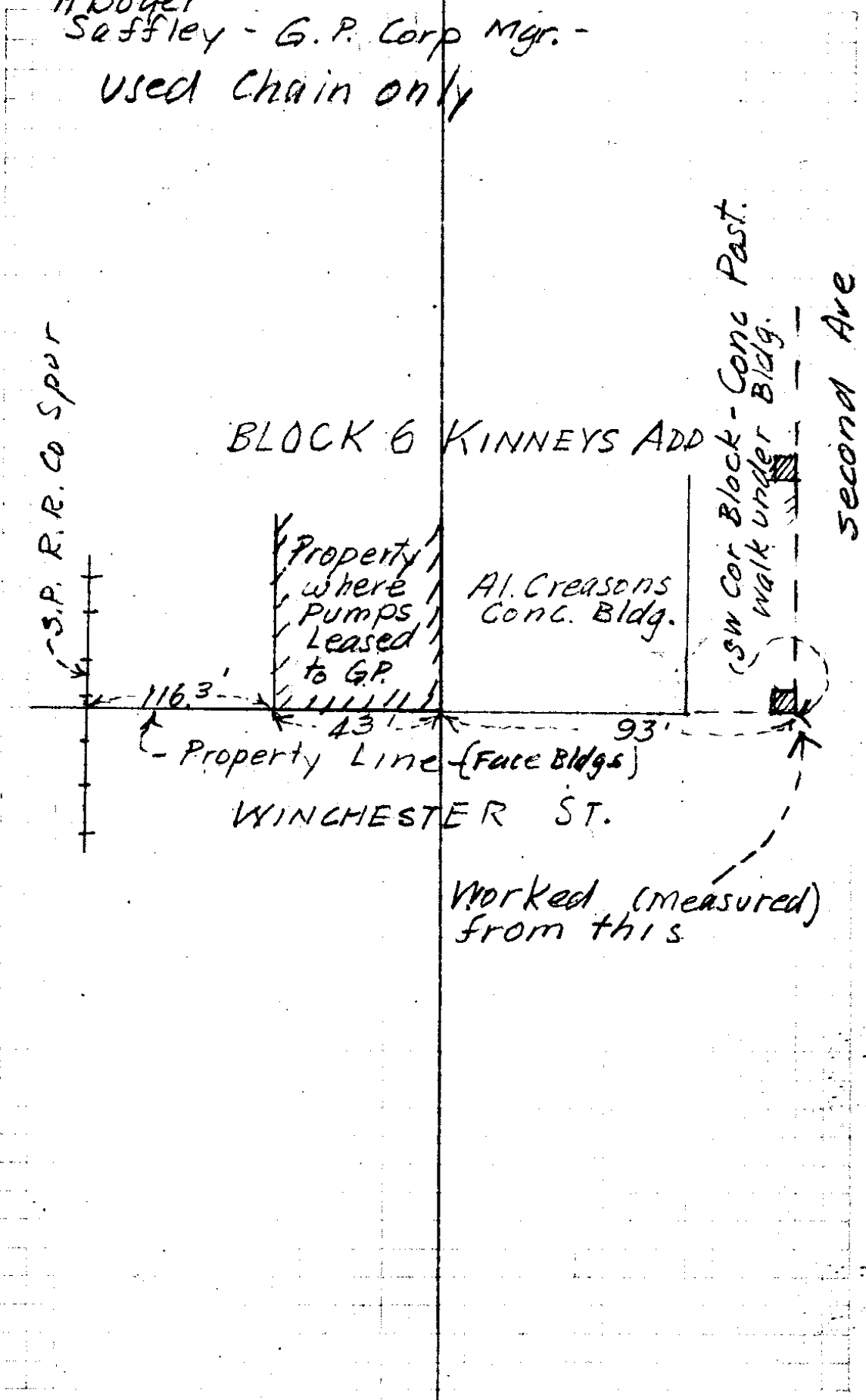


June 2, 1931

A Boyer
Saffley - G.P. Corp Mgr. -
used chain only



S.P. R.R. Co Spur

BLOCK 6 KINNEYS ADD

Property where pumps leased to G.P.

Al. Creasons Cong. Bldg.

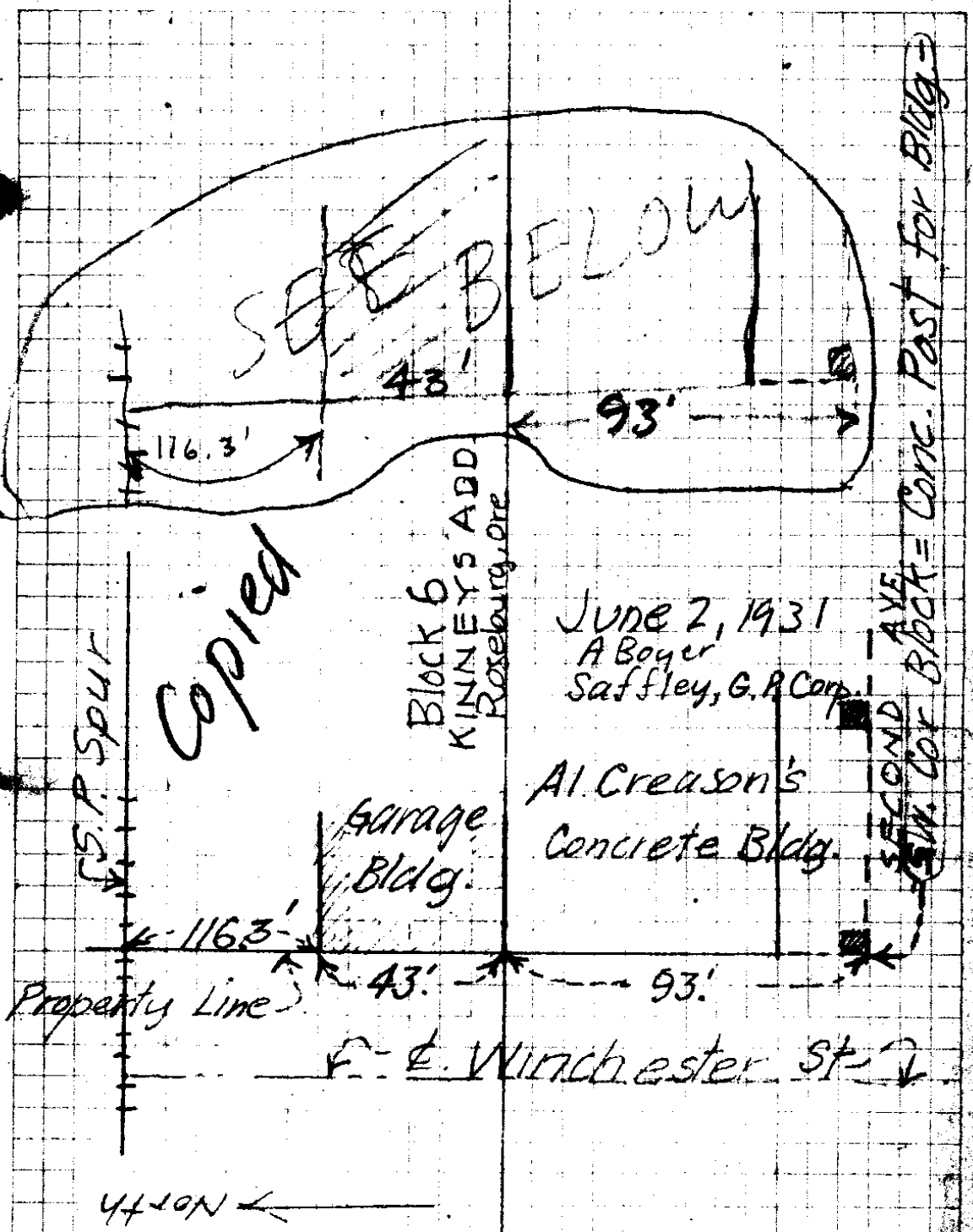
SW Cor Block - Cong Past. walk under Bldg.

Second Ave

116.3' 43' 93'
Property Line (Face Bldgs)

WINCHESTER ST.

Worked (measured) from this



Loc'n of Frontage of Garage Bldg
on Winchester St, Roseburg to
show Loc'n of Pump for Gen.
Petroleum Corp, Lease. for Saffley
Manager.