

V. 18 - E 18

A.S. Coen

A. S. Coen's
Winchester St. Heights

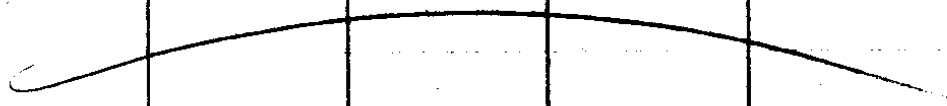
Feb. 6, 1932

N. E. Richardson Transit

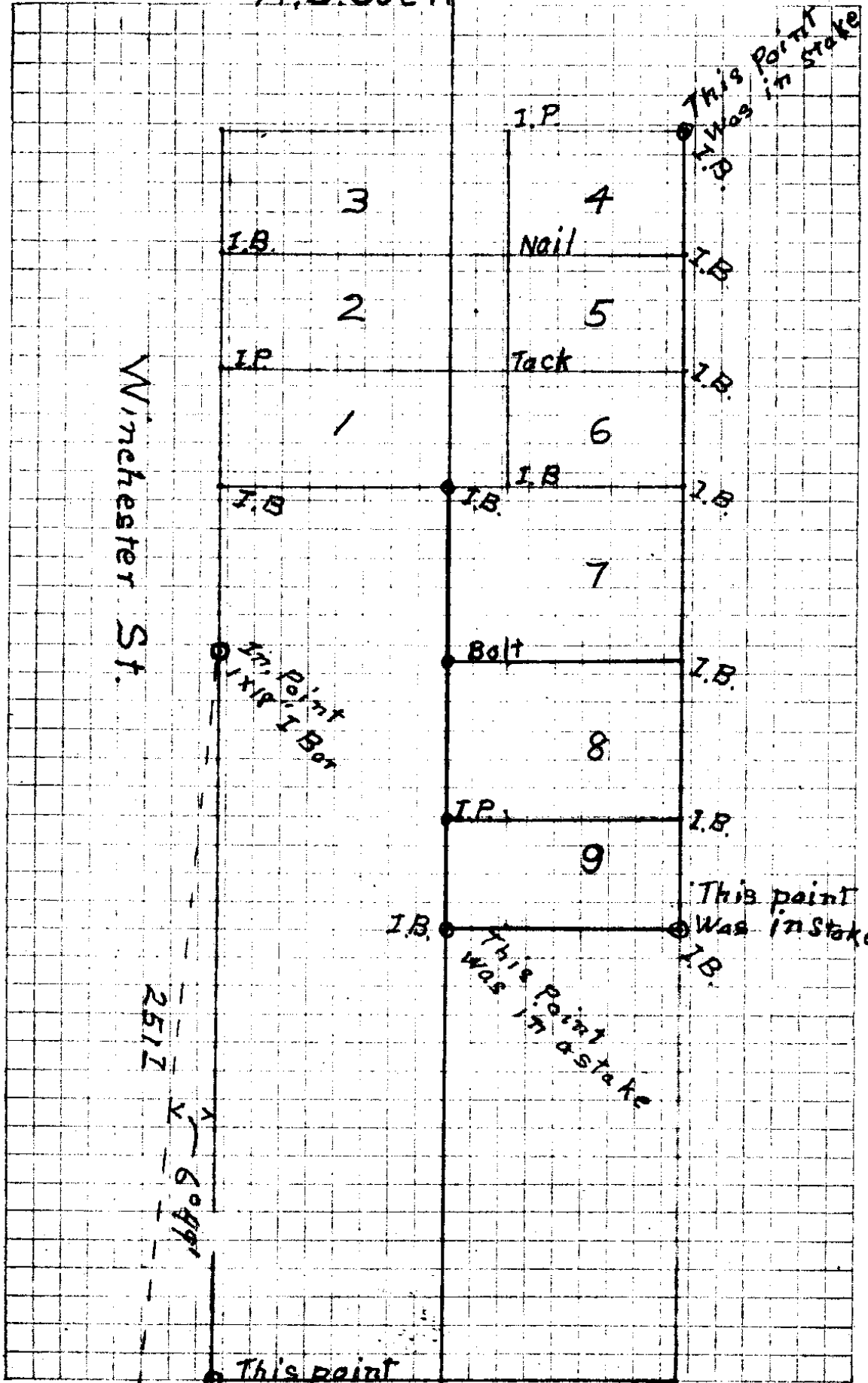
B. A. Lane Chain

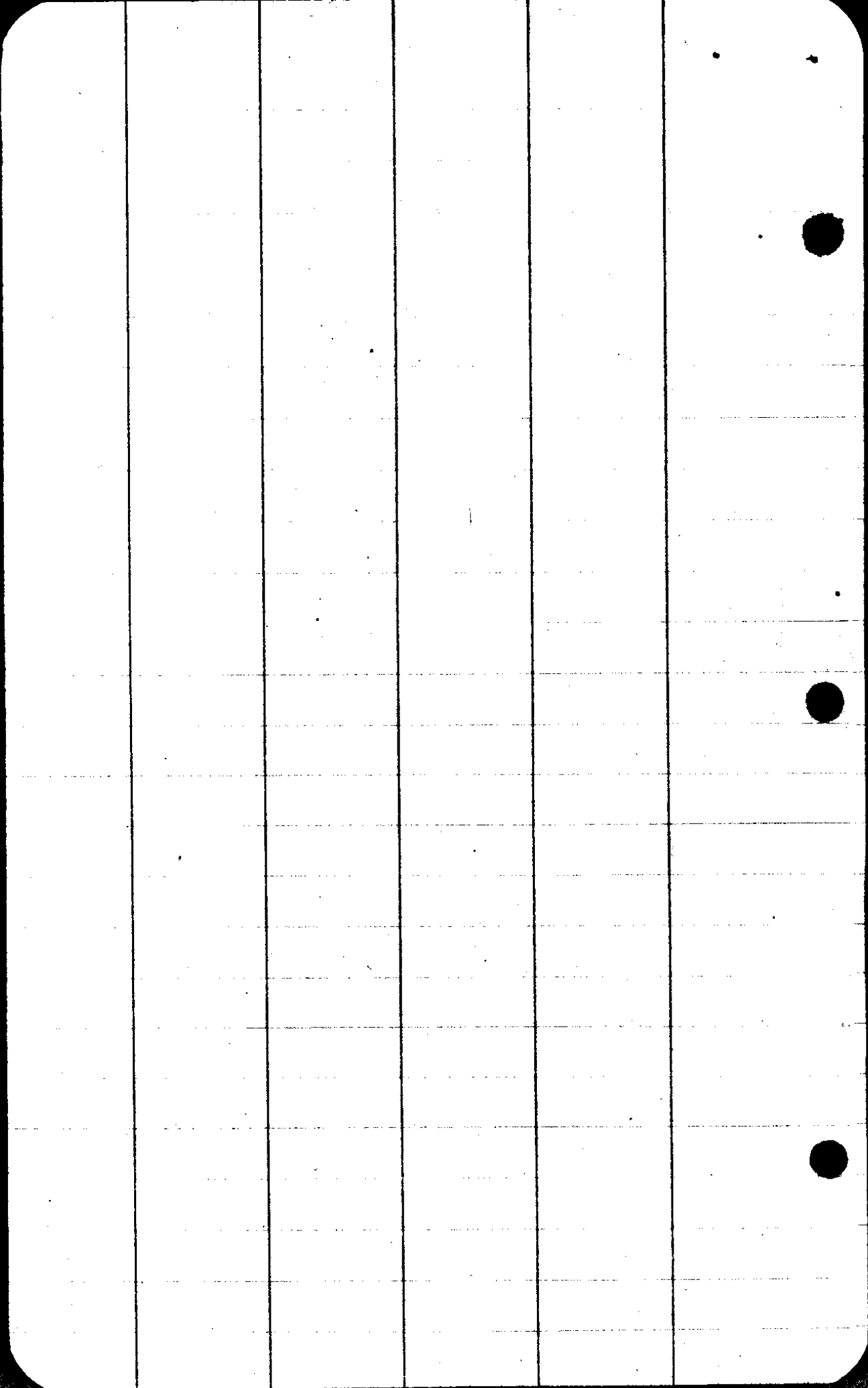
A. Boyer "

Rain



A.S. Coetz



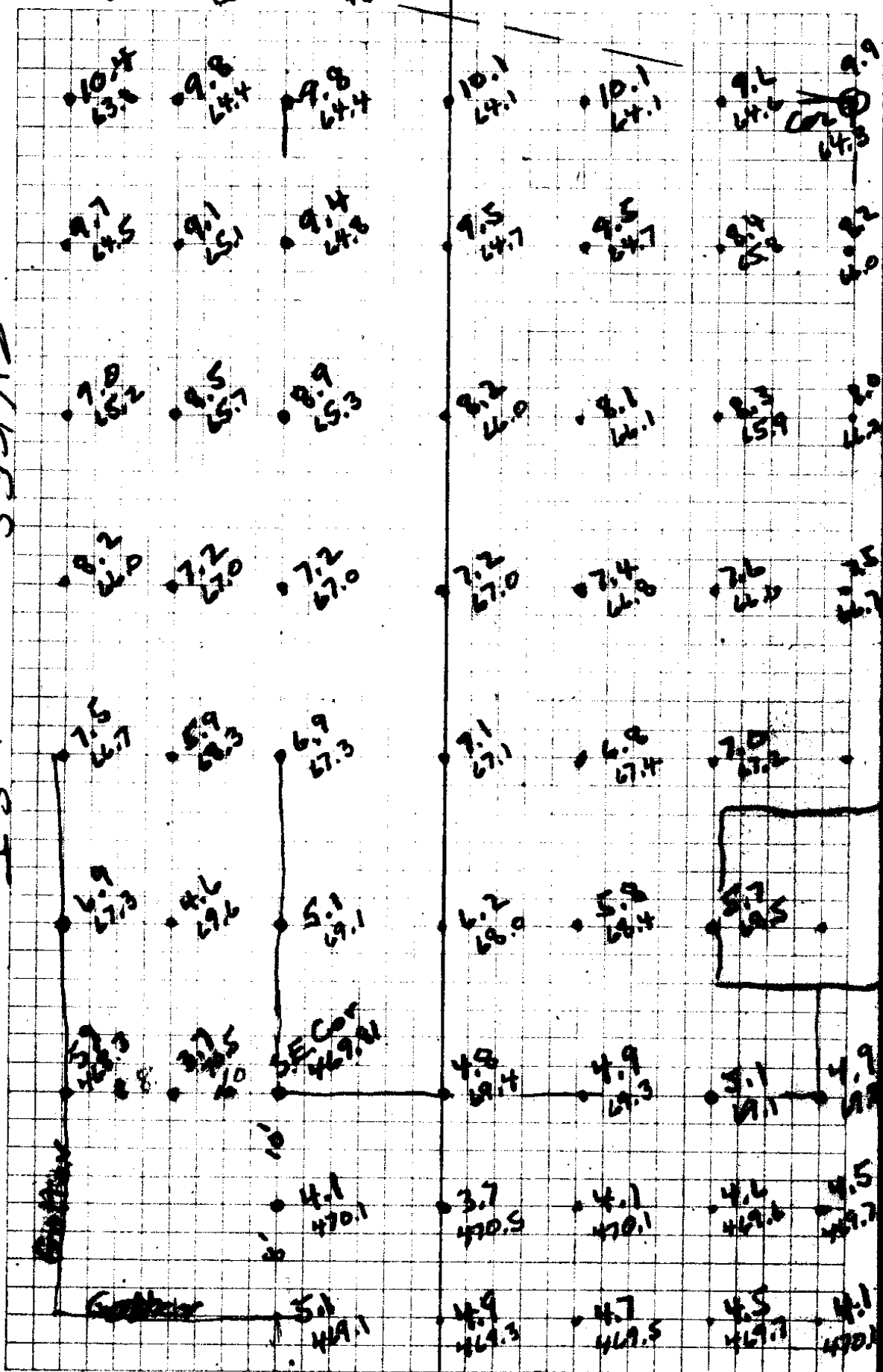


11.0
43.2

Cor @ 10.52
463.23

SYKES

ST



Prop. SHORT ST 11/18

+ H.I.

SE. Cor

469.81

4.01

473.82

10.16
463.66

Rail

9.49
464.33

10.67
463.15

10.21
460.61

9.62
464.20

Curb ends.

33'

6.67
467.13

468.17

X 5.65

X 5.15

468.67

469.81

X 469.3

464.55

X 4.27

470.35

X 3.47

X 4.76

469.04

X 3.96

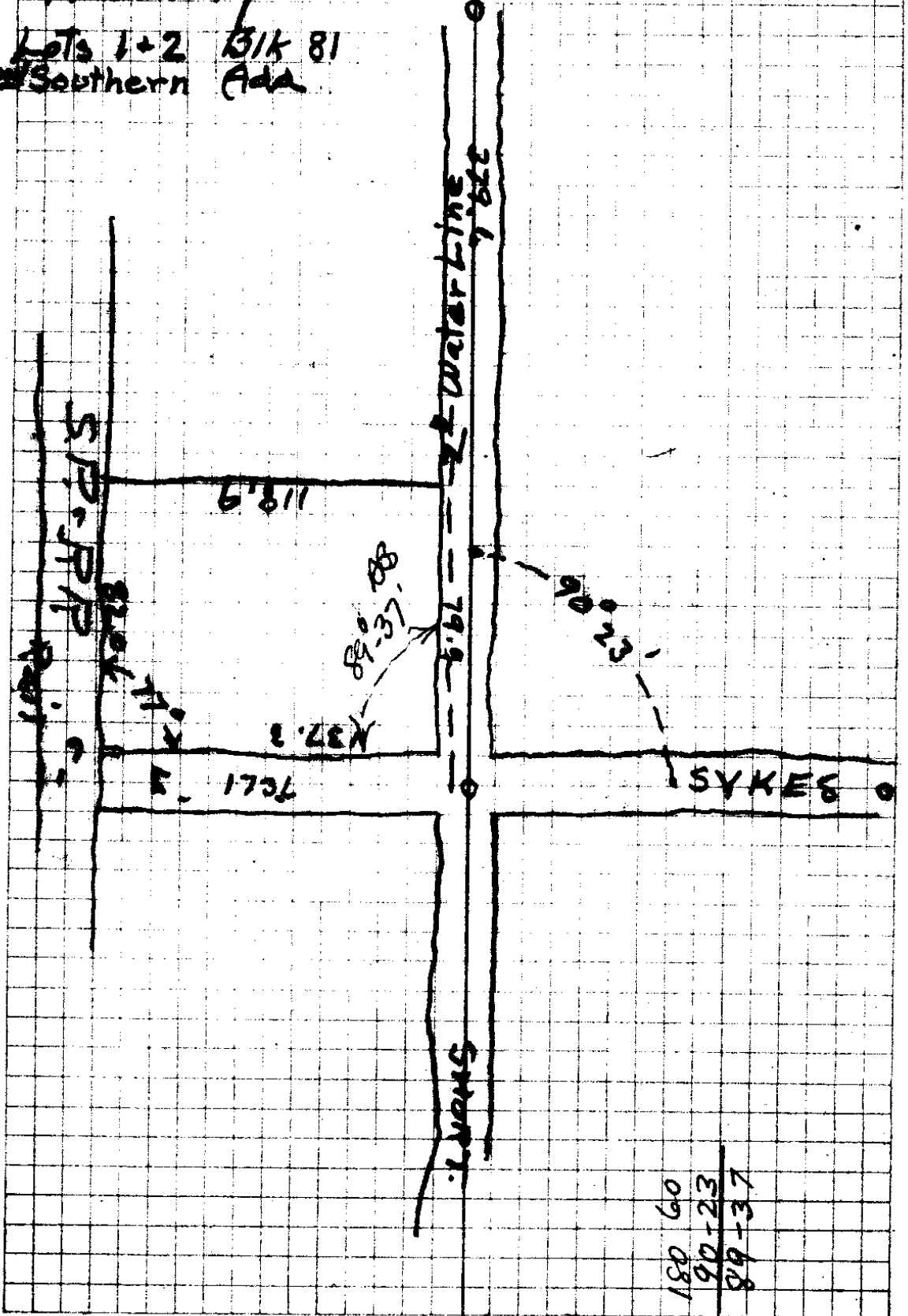
469.84

Stancliff Prop.
 on Short + Sykes Sts.
 Roseborg

Sep 21 1931
 Welford
 Lane
 Richardson

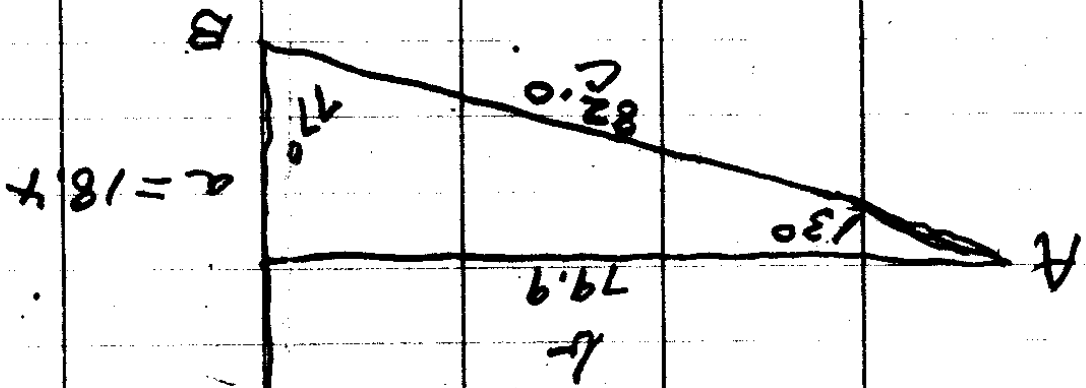
● Lots 1+2 Bk 81
 2nd Southern Ada

A.



180 60
 90-23
 89-37

18/18



$$\frac{a}{c} = \sin A$$

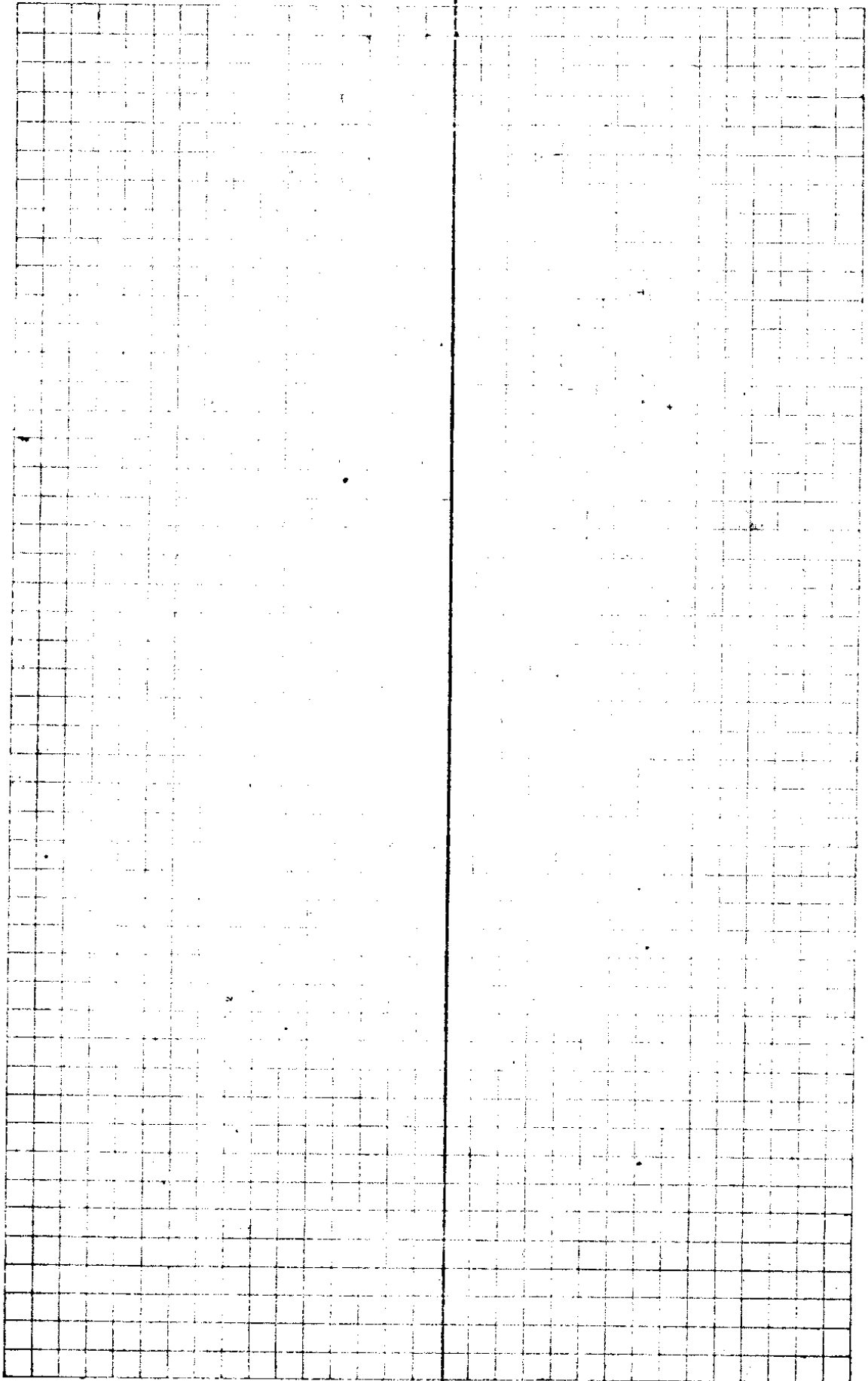
$$\cos A = \frac{b}{c}$$

$$\cos 13^\circ = \frac{79.9}{c}$$

$$c = \frac{79.9}{\cos 13^\circ}$$

$$c = 82.00$$

97437 | 79.90000
 799496
 195040
 194874
 1600



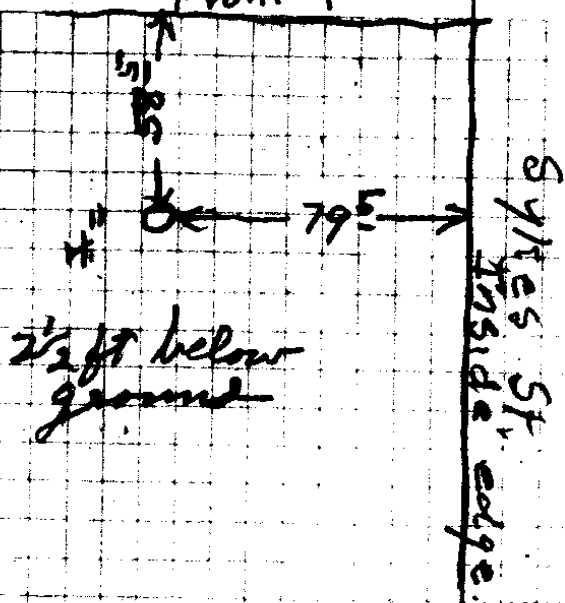
8/18

Sta	+	H.I	-	R	E. c
	2.08	485.89			483.81
T.P.			11.35		474.54
	0.65	475.19			
SE. Cor. of Prop. on I.P.				5.38	469.81

4.34 477.15 H.I for all Contour
Readings

Have to connect sewer with Fullerton St

Short
Front of Curt

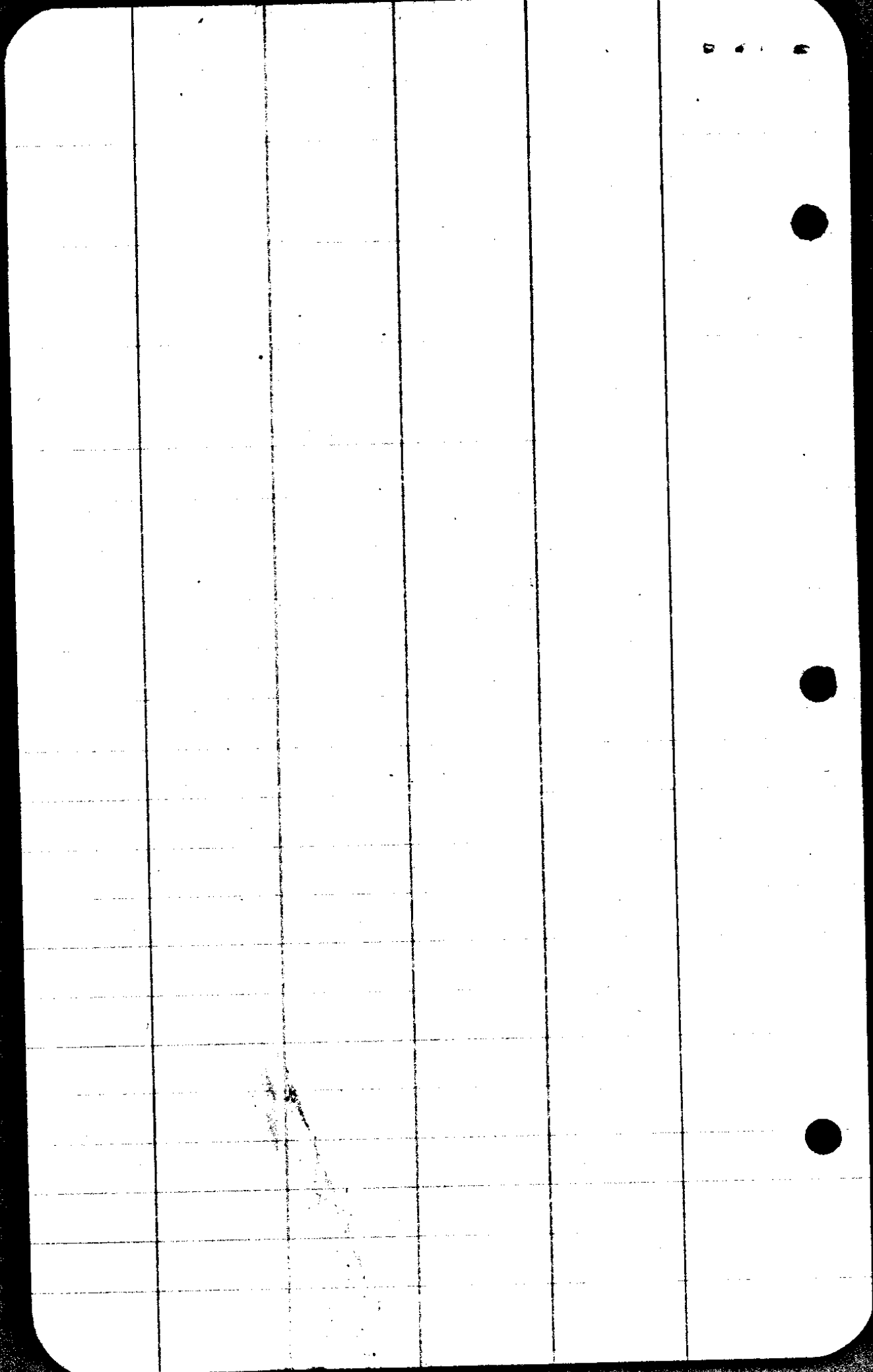


467.15
25

464.65
464.7

463.65
463.15

18/18



CS FILE FOLDER

CONTAINS

MORE

INFORMATION