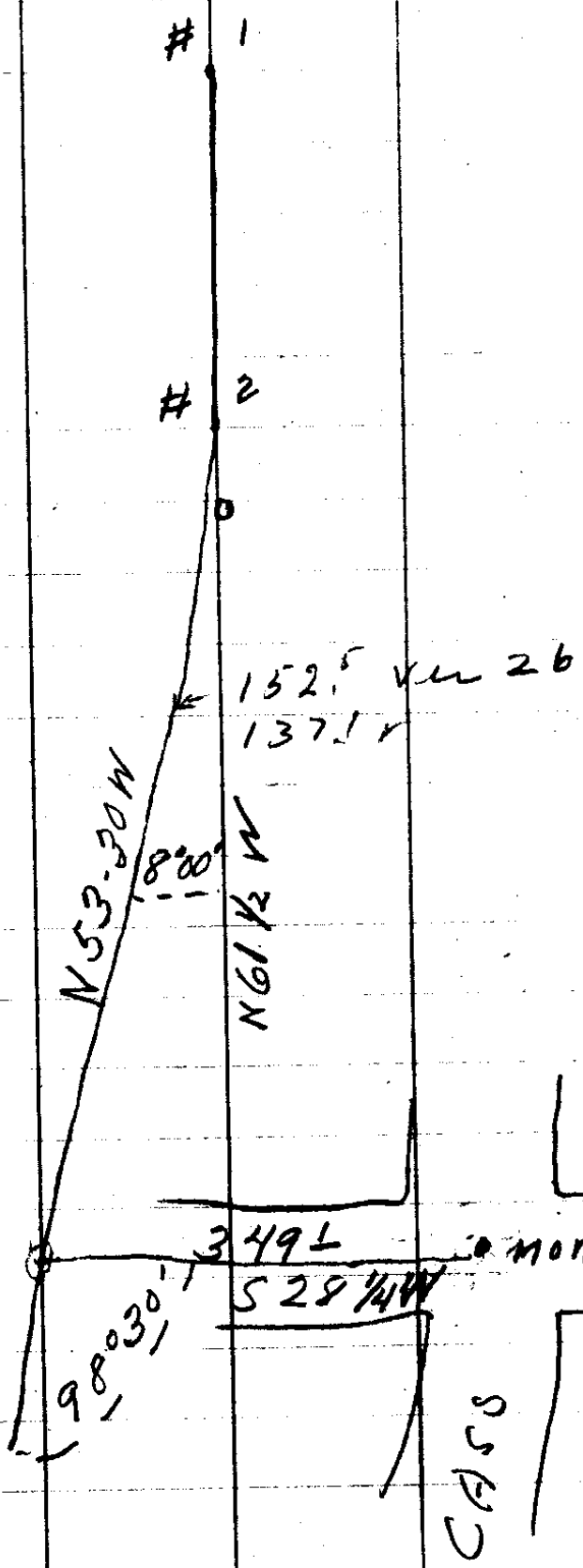
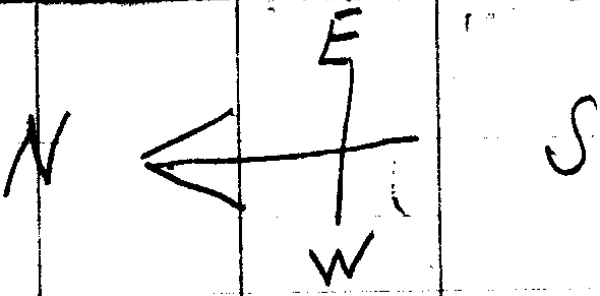


Sta	DIST	LT	RT	MC	C.C.
#8	47 <u>3</u>		40'17'	S43°30'W	S45-11W
#7	62 <u>3</u> 67 <u>2</u> <u>22°</u>		72°44'	S3°30'W	S4-54W
^{E4} N.W. Cor.	6 <u>6</u>		102°44'	S33-30W	
#6	90 <u>8</u>		62°36'	S69E	S67-50E
I.B. #3	6 <u>1</u>		162°06'	S30°30'W	
I.B. #5	36 <u>5</u>	45°15'		N49E	N49-34E
#4	76 <u>5</u>		51°33'	S86E	S85-11E
Δ #2 N.W. Cor.	94 <u>3</u>	55°28'		N13°30'W	
#3	243 <u>8</u> 244 <u>9</u> <u>1-45</u>		103°16'	N42°E	N42-16E
I.B. #1 S.W. Cor.	5 <u>2</u>			S61°E	
#2	38 <u>9</u>			S61°E	
#1					

Sta	Dist	Lt	R+	M.C.	G.C.
#10B	230		62°04	S75½W	
	460		36°38		S51-02W
#10A	230	31°02'		S14°W	S14-24W
I.P. #9	629	9°09'		S45°W	S45-26W
I.P. #5					
I.P. #9	70		82°39		
I.P. #8	246	9°09'		S45°W	S45-26'W
I.P. #7	246				
I.P. #6					
I.P. #5	112		82°39		
	844		9°24'	S53°30W	S54-25W
#8					

Sta	Dist	Lt	Rt	M.C.	C.C.
# 1	1214 <u>1298</u>				
# 11	20-45			S61 E	S61 E
	129			S61 E	S61 E
S.E. Cov	288		45° 57'		
			22° 54'		
# 10A					



CS FILE FOLDER

CONTAINS

MORE

INFORMATION