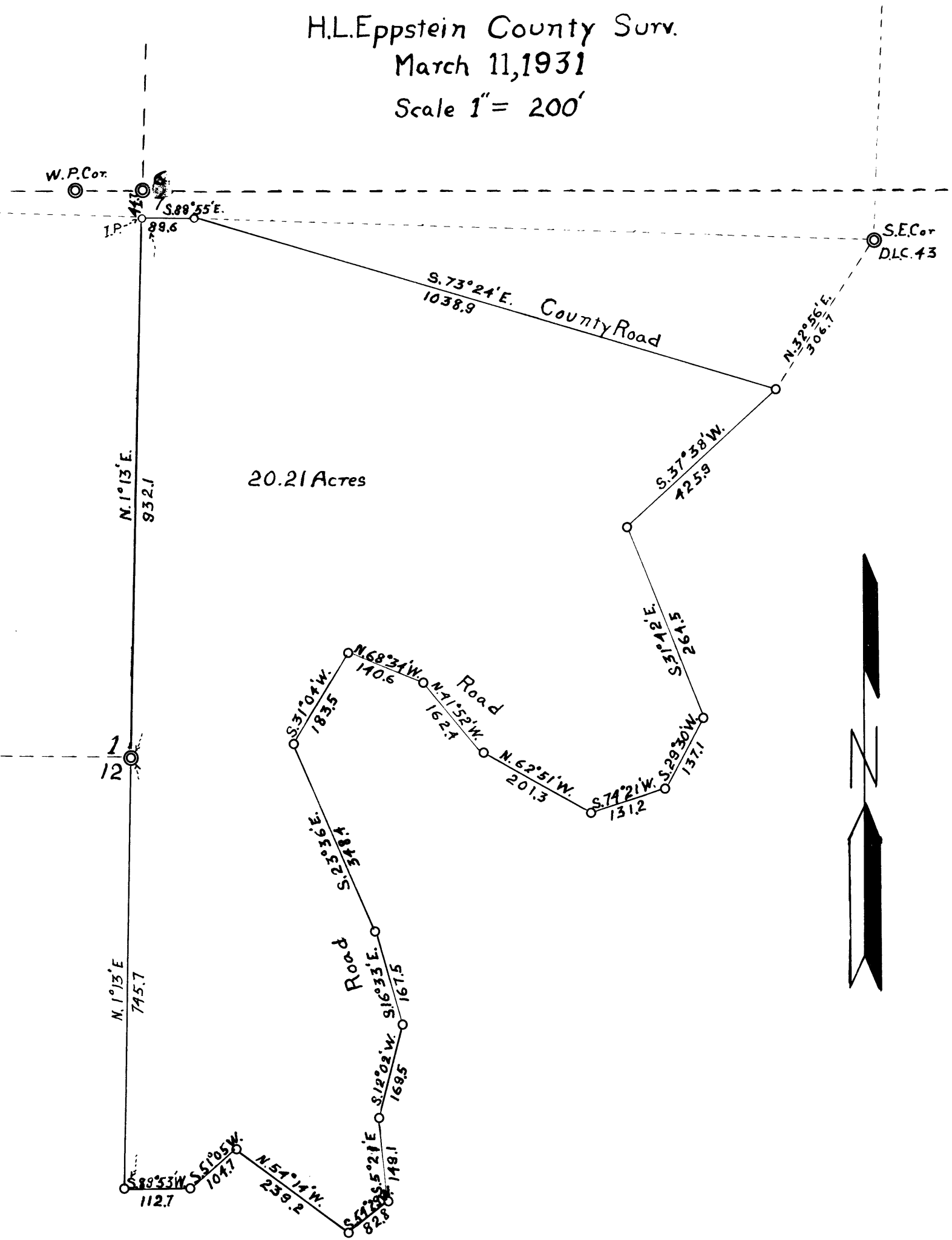


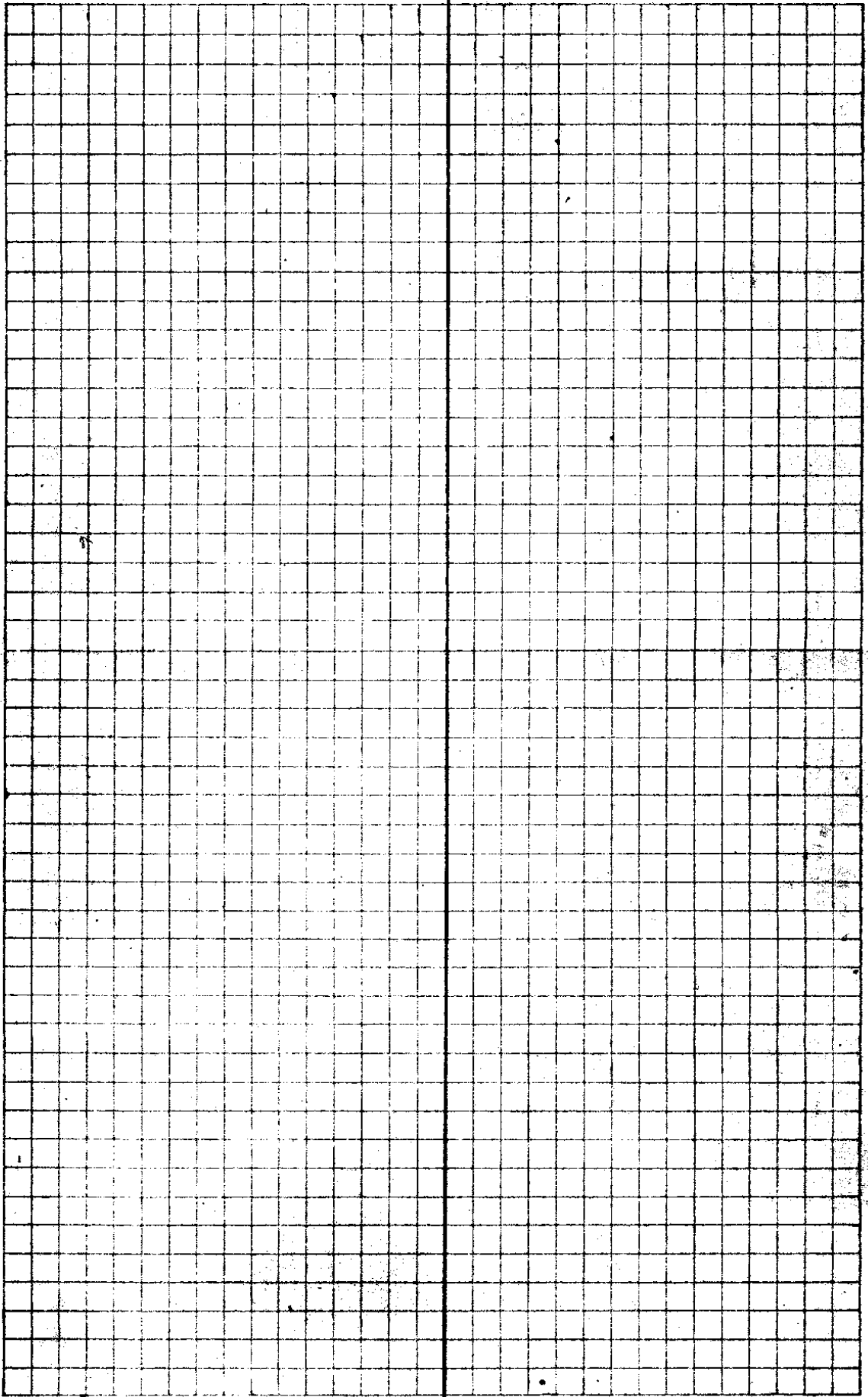
# PLAT OF ERICK JOHNSON SURVEY S.7T. 29S. R.7W.

H.L.Eppstein County Surv.

March 11, 1931

Scale 1" = 200'





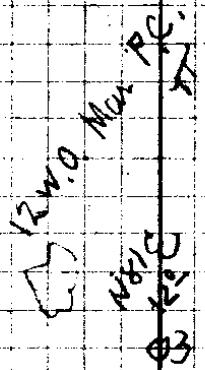
1 Frank Adamek to Erick Johnson.

Δ13				
-32 <sup>5</sup> 149 <sup>1</sup>	148 <sup>8</sup>	161-35 <sup>8</sup> EX	S7E	S5-21E
Δ12				
-24 <sup>5</sup> 169 <sup>3</sup>	169 <sup>1</sup>	209-39 <sup>1</sup> EX	S11-30W	S13-04W
Δ11				
-1-30 167 <sup>3</sup>	167 <sup>2</sup>	187-03 <sup>2</sup> EX	S12 E	S16-35E
Δ10				
2 <sup>20</sup> 3 <sup>00</sup>	479 299 <sup>7</sup> <hr/> 347.6	125-13' EX	S25E	S23-38E
Δ9				
x6 184 <sup>2</sup>	183 <sup>2</sup>	99-35 <sup>2</sup> EX	S29-30W	S31-09W
Δ8				
x4 141 <sup>2</sup>	140 <sup>7</sup>	153-24 <sup>1</sup> EX	N70W	N68-26W
Δ7				
x3-30 163 <sup>2</sup>	162 <sup>7</sup>	200-56 <sup>2</sup> EX	N43W	N41-50W
Δ6				
x4-10 201 <sup>1</sup>	201 <sup>4</sup>	222-26 <sup>1</sup> EX	N64W	N62-46W
Δ5				
x3-30 131 <sup>3</sup>	131 <sup>1</sup>	225-14 <sup>1</sup> EX	S73-30W	S74-49W
Δ4				
x4 131 <sup>1</sup>	136 <sup>8</sup>	241-20 <sup>1</sup> EX	S31-30W	S29-34W
Δ3				
x1-30 266 <sup>2</sup>	263 <sup>9</sup>	110-31 <sup>1</sup> EX	S33 E	S31-46 E
Δ2				
x4 228 <sup>0</sup> x6-30 199 <sup>2</sup>	227 <sup>4</sup> 197 <sup>9</sup> <hr/> 425.3	56-15 <sup>1</sup> EX	S36-30W	S37-43W
Δ1				

N.E.R  
F.R  
H.Z. Ireland.



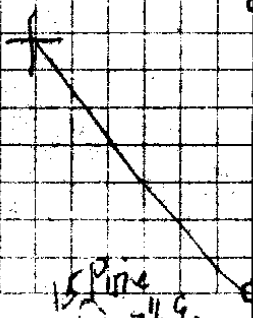
W 030° N 75° W 2840  
V 42



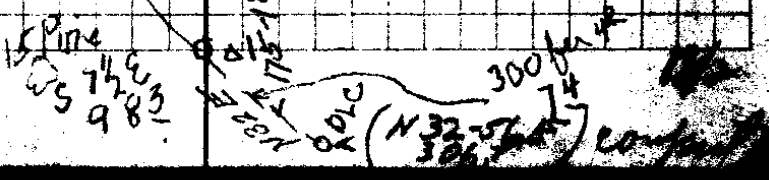
Mar 6-1931

Time 10-36  
Hor 70° 42'  
V 35°  
Needle

Time 10-37  
Hor 69° 53'  
V 35° 38'  
Needle S 33° 30' E



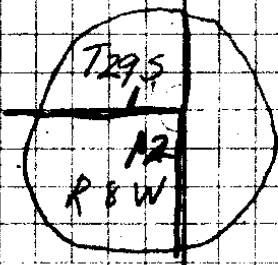
Back Sighting



3

Erick Johnson

$\Delta 24$ -7-15 175	$\frac{560}{1736}$ <u>229.6</u>	177-15	N1-15W	N0-36W
$\Delta 23$ +7-15 195	118 <sup>5</sup>	181-00 EX	N1E	N2-09E
$\Delta 22$ -11 <sup>0</sup> 196 <sup>6</sup>	193 <sup>0</sup>	178-24 EX	North	N1-09E
$\Delta 21$ -1-30 138 <sup>2</sup>	138 <sup>3</sup>	182-23 EX	N1-30E	N2-45E
W $\textcircled{12}$ axaway shot 14 <sup>1</sup>		204-04' EX	N28 <sup>0</sup>	N29-26E
$\Delta 20$ +4-20 248 <sup>2</sup>	247 <sup>8</sup>	179-16 EX	N0-45W	N0-22E
$\Delta 19$ -23-30 115	$\frac{1227}{1605}$ <u>283.2</u>	180-23 EX	North	N1-06E
$\Delta 18$ -1/6 219	203 <sup>7</sup>	266-28 EX	N330'W	N0-43E
SW $\Delta 17$ +5-2 114 <sup>5</sup>	114 <sup>4</sup>	223-15 EX	N87W	N85-45W
$\Delta 16$ -1-30 104 <sup>6</sup>	104 <sup>6</sup>	105-08' EX	S50W	S51-00W
$\Delta 15$ +4-30 240 <sup>2</sup>	239 <sup>6</sup>	251-16 EX	N55W	N54-08W
$\Delta 14$ +1-30 127	82 <sup>7</sup>	239-57 EX	S53W	S54-36W
$\Delta 13$				



10" Eir S75W 96  
8" Eir N12W 198

5

Erick Johnson

AJ  
3-15  
300

206  
299.5  
320.1

180-06

574E

573-250

A21

7189

196-15

573-19E

S25 3 feet North

897

267-22

588-30E

~~549-34E~~

NW D 25

11-40  
2652

2597

183-40 EX

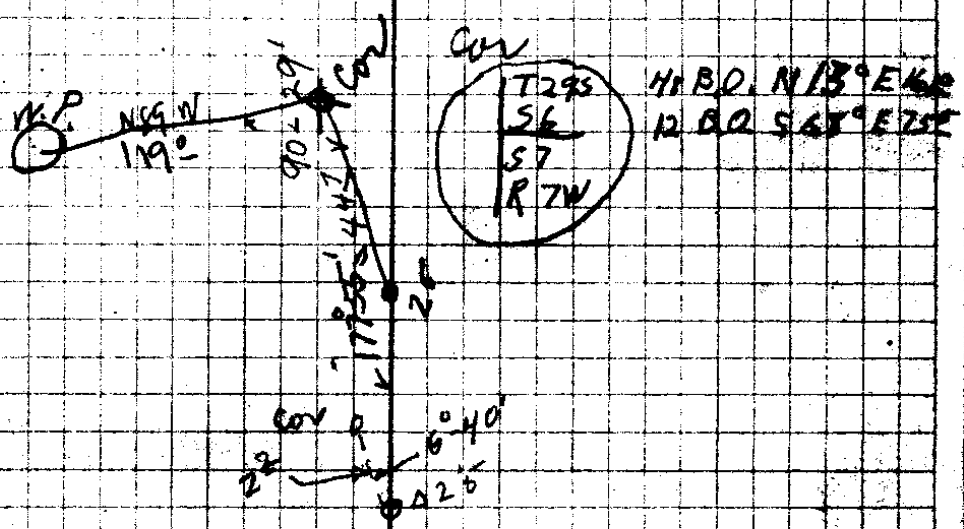
N2-30E

N3-04E

024

Time 3-3  
 Horz 46°-02'  
 Vert 29°-28'  
 Time 3-4  
 Horz 46°-49'  
 Vert 29°-55'  
 Needle S 47° W

WP  
 36 W.O. N 57 E 890



L

PI

48-342

PI

A3+00

CS FILE FOLDER

CONTAINS

MORE

INFORMATION