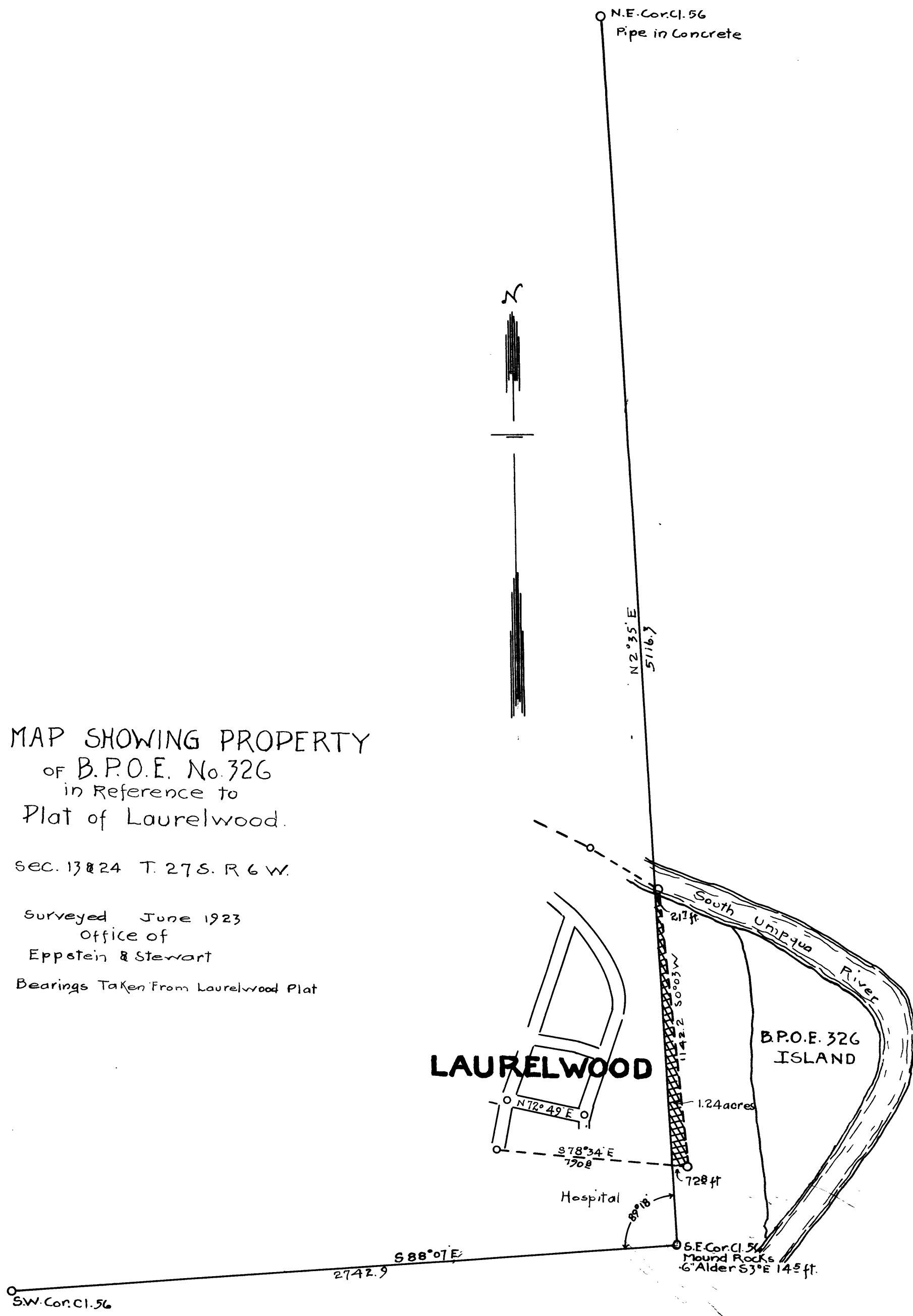


MAP SHOWING PROPERTY
 of B.P.O.E. No. 326
 in Reference to
 Plat of Laurelwood.

SEC. 13 & 24 T. 27 S. R. 6 W.

Surveyed June 1923
 Office of
 Eppstein & Stewart

Bearings Taken From Laurelwood Plat

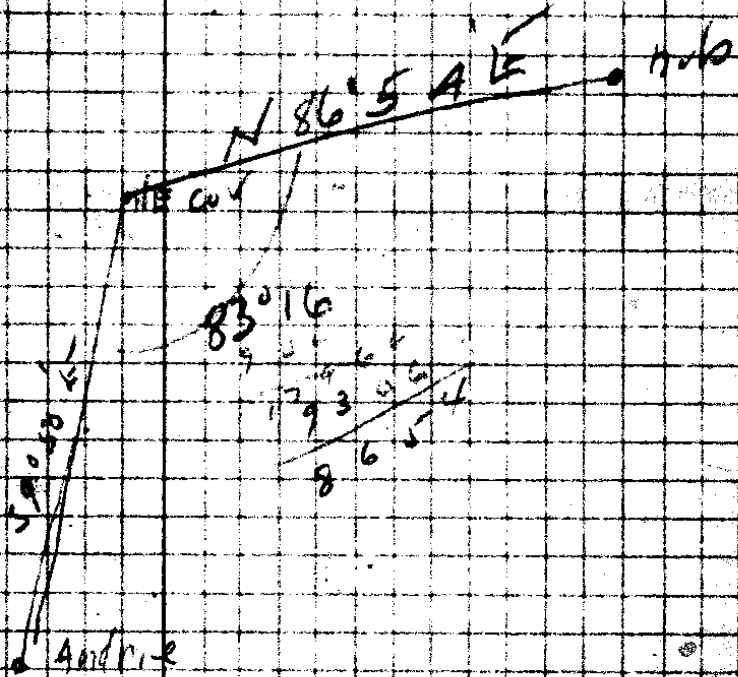


CS 17/34

Handwritten notes and signatures at the bottom right of the page.

86° 05'
252
83

86° 05'
43
8



E/Ks Job May 26. 1923
 Began at N8 cor D

2

3° 51' L

7°
5

300°
163°

S 10 1/2° E

S
65° 25'

59° 16' E

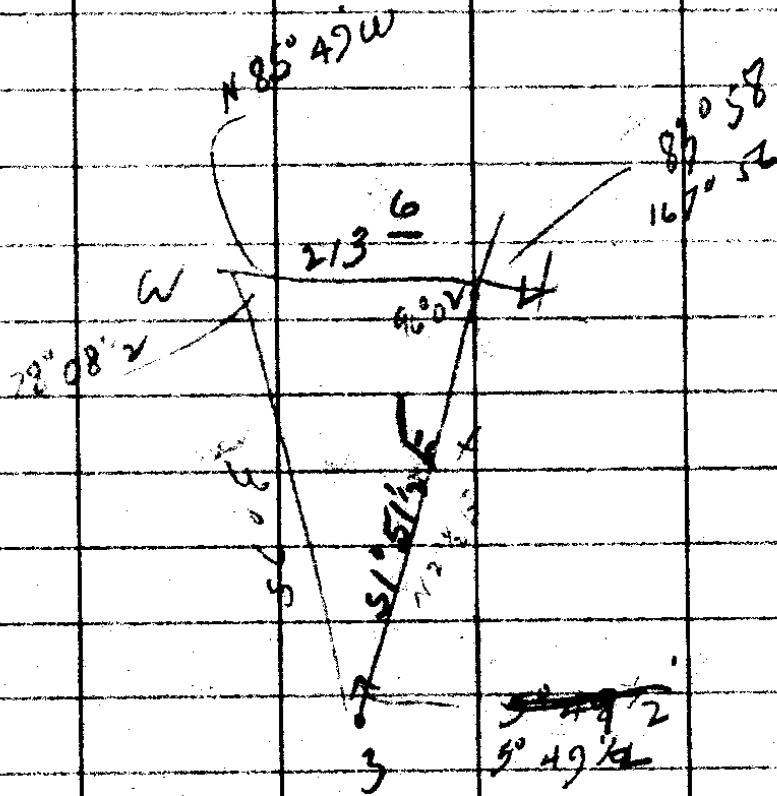
3

70° 25' R
140° 49'

South

S 1° 51 1/2' E

4



$$\frac{x}{\sin 78^\circ 08'} = \frac{213 \frac{1}{2}}{\sin 5^\circ 49' 2}$$

$$x = 2060 \frac{5}{2}$$

4

52° R

158°

S 50° 08' W

5

12 1/2

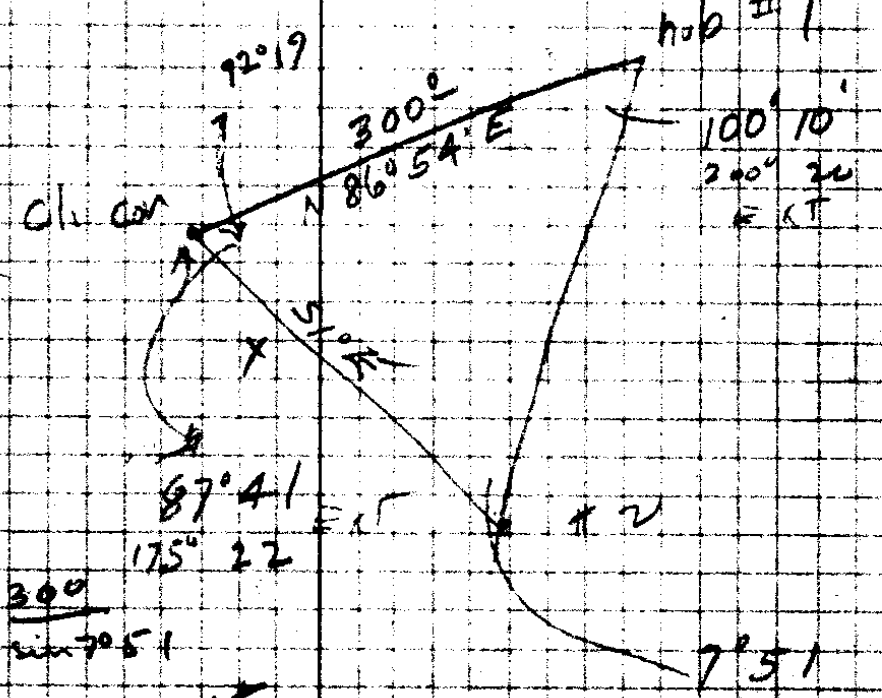
17960
13010

7950

219
7950

7209

1463
1622



$$\frac{7950}{\sin 70.51} = \frac{3000}{\sin 70.51}$$

7162 ft

set 2, site B. Point
11° 14' R 69 ± S 5° 49' W
still described N.E. COR.

No. 11. 70. 79. 79.
S 72° 41'

17960
17960

17960

82° 40'
86° 54'

17960
17960

17960

5

18° 01' W

3°

7144[?]

S 32° 07' 2 W

6

15° 17' R

145[?]

S 52° W

S 47° 44' 2 W

7

31° 01' R

42[?]

S 78° 35' 2 W

8

47° 45' L

75[±]

S 35° 40' 2 W

9 = opp. fast hut 2;

50° 06' R

1404[±]

{ S 40° 55' W solar

S 80° 46' 2 W

10

0° 28' L

295[±]

S 85° 18' W

11

3° 76' W

S 35°

S 81° 52' W

12 S.W. cor (1.56)

13

~~300
120
179~~

Star Bearing claim line East
= N 00° 44' E

9/11

May 26

4 30 P.M.

744

Hov. 50-2

Ver. 30-45

Hov 49-36

Ver. 31-03

~~0~~

4-30 P.M.

~~0~~

AN. H = 49° 47'

AV. V = 30° 54'

Lat 43° 13'

130
125
5

417
1303
2267
1659
208

73 @ 1645

598
705
1652

598
777
1350 = 77 @ 15

2696
1486
4177

Set STR → Mound Rocks
Ag cor Cl. 56
14 ft. ↗ S3° E
6" Alder

set Ag cor Cl. Main Channel of River
is East 370 ft to Bank

Set # 4 hub. site # 3
def. 10'14" R ²⁸⁵ 92? N13° E N8°33' E
25 land 150' East
15°45' L 475⁵ N7°22' W
Iron Bolt. River is North 150 ft.

253° West from Bolt to Pavement

Set # 5 BS # 2 550° 08' W
131'31" L 156⁵ N75° W 581° 23' E
To approx. I.P. Cor Samuel Wood

set 5
36° 35' R 26^u 586° 43' W
Cor Hospital Fence

1435
1565

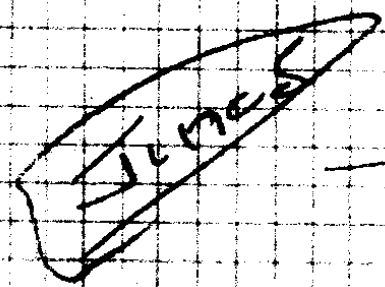
Set of note 3

111° 55' To Sun

0

51029

3 P.M.



10

112° 20'

51004

set 5	site 4				
a	49°59' R		66°	575° E	N79°53' W
b	30°16' R	10°	192 ³		N49°37' W
	51°19' R		72 ⁶		N1°42' E
Street Mon	81°37' L		322 ³		N79°55' W
Street Mon					= 74° 10' Solar
<hr/>					
9	50°51' R	7°	157 ⁶	S88° W	S35°40' W
10	0°54' L		1599 ⁴		S86°31' W
11	4°12' L	2 ²	300 ⁰ 184 ⁶	S87° W	81 25
FOR SUM					

CS FILE FOLDER

CONTAINS

MORE

INFORMATION