

$$\begin{array}{r} 100 \\ 69.9 \\ \hline 30.1 \end{array}$$

$$\begin{array}{r} 63 \\ 47 \\ \hline 16 \end{array}$$

$$\begin{array}{r} 555.8 \\ 47.8 \\ \hline 102.0 \\ 77.2 \\ \hline 601.2 \\ 89.63 \\ \hline 31.2 \\ 84.6 \\ \hline 118.49 \\ 20.2 \\ \hline 18.5 \\ 2205.8 \\ \hline N 27^{\circ} 58' E \\ 68.0 \\ \hline 90.0 \\ 509.01 \\ \hline 83.26 \\ \hline 83.17 \\ 26.60 \\ \hline 22.10 \\ 110.10 \\ \hline 49.10 \\ 20.10 \\ \hline 74.00 \\ 90.12 \\ \hline 89.12 \\ 10.00 \\ \hline 78.60 \\ 10.00 \\ \hline 88.60 \end{array}$$

296<sup>2</sup>

180<sup>2</sup>

= 588<sup>2</sup>

$$\begin{array}{r} 296.3 \\ 189.9 \\ \hline \end{array}$$

arent 48 5 8° W from Cl. Cor.

April 10 '71

675<sup>2</sup>  
329<sup>-</sup>  
348<sup>6</sup>

To stik on F. med line

Cor By. #6 set stik

Marked 14° W.O. N63° W 70° ft

River

N7° 6

~~N75° 86~~  
N8° 6

opposite  
B

766<sup>0</sup>

1032

±<sub>1</sub>

41.5  
41.

1439

Tie

29185

N77 10 W

±<sub>1</sub> is

Cor Cl.

36<sup>5</sup>

42

276

N25° 21 W

26<sup>56</sup> ch

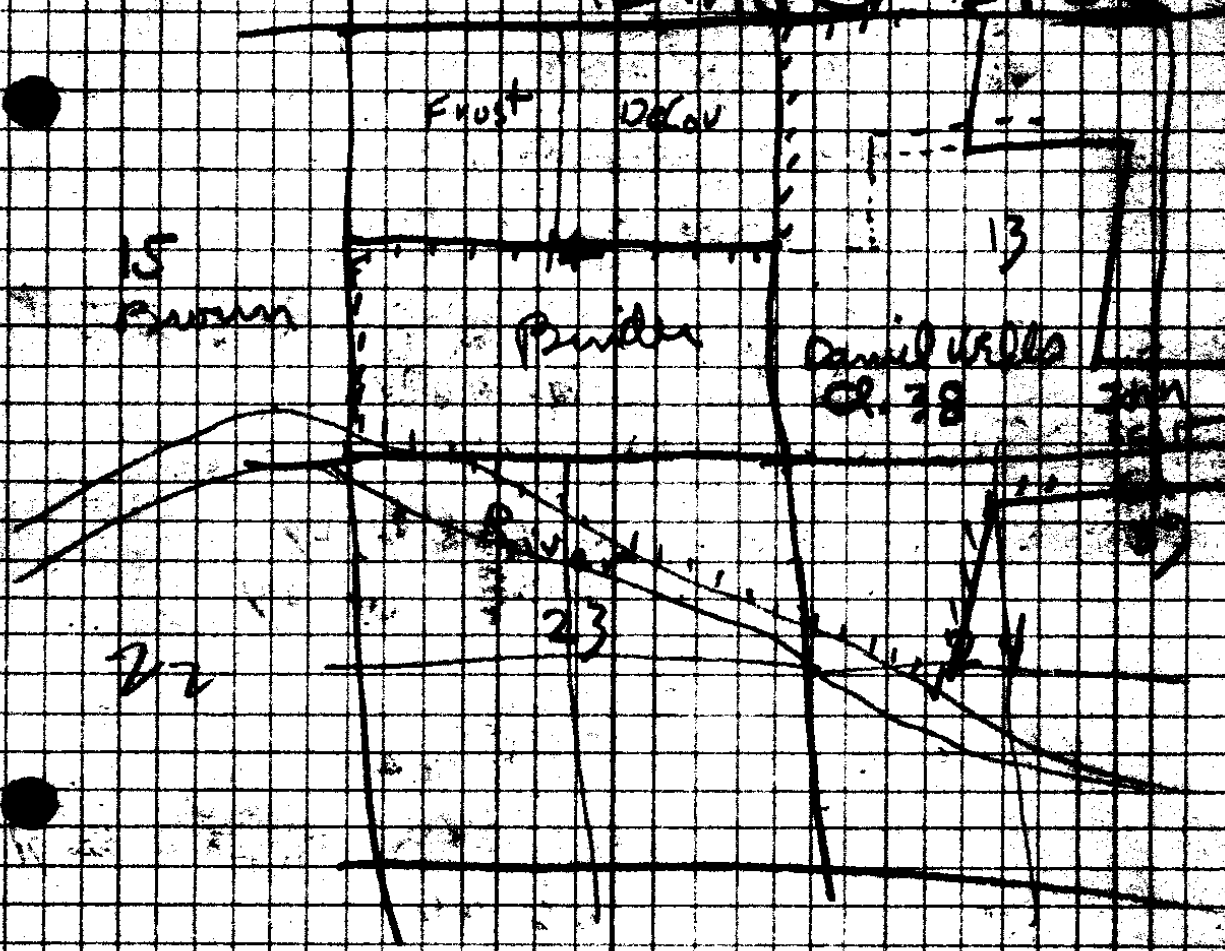
1772<sup>4</sup>

N87° 30

STK on 11° North of Cl. Cor

62091  
875  
377  
952

T 22 S R 8 W  
 Binder Bros



T 22 S, R. 8 W

40° NW 3° W. O S 71° E 10  
 36° E 78° W 27

1/3 Left Pender Riv  
 8" Pine Oak S 35° E 10  
 14" " " N 58° W 14

1/2 M.P. R. Pender  
 4" oak S 30° E 26 Chas  
 6" " S 70° W 35 "

1/2 E. C. 13-14-23-24  
 changed 27 - 28

W cut bet 13+24

39.97 "4 cor charred oak

45.40 stream 2 lks wide

78° stream 10 lks wide S E

79.94 To See Cor.

N bet 13+14

15 Road c. W

40° "4 cor 6" Laurel N 28° E 49

4" " N 61° W 89

67.5° Ridge c. SW

80.0 cor 11-12-13-14

50" Fir N 70° W 24

10" " N 57 1/2° E 46

5" Maple S 56° E 92

18" Fir S 30 1/2° W 90

89° 43 W bet 12+13

37.66 stream 2 lks wide c. SW

39.70 "4 cor 10" B.O. S 4° W 176

10" " N 18° E 79

78.86 stream c. NW

79.41 cor

T 28 S Q 8 W

M lat 14 x 10

258 M.P. set back Pines

3' Junc marked west 30' also  
10" ash 7 50° E 10

39 road

40° W. loc 10 W.O S 41° E 18 7

18" " " S 10° W 275

72 1/2 stream

80° CO 10-11-1 N-15

10" Fir S 48 1/2 W 315

2" W.O S 10 1/2 E 336

10" Fir 7 75 1/2 W 788

7 28 S Q 7 W

ON West side 19

17 1/2 M.P. 10" Fir 7 34° E 10

6" " 7 57° W 6

26 1/2 M.P. 6" willow 7 64° W 36

6" " S 39° E 32

40° set changed str

78° heavy grainy enter timber

80° CO 13-14-18-19

30" B.O. S 53° E 48

20 " 7 40° W 73

20 " S 91° W 84

20 " 7 30° E 53

7 on West side 18

36 1/2 stream; 40° 1/2 17" Fir S 87° W 92

8' S 13° E 116

80° CO 7-12-13-18. W.O 18 S 71° W 6 74

50" Fir 7 22° W 95 C.S. File No. 17/1

Reset

1964

N.W. cor Wells cl 38 40" Fir S 35° W 89  
15' oak S 57° E 217

S.W. cor cl Seed 39  
Rock sandstone N 85° E 37 1/2

As 239  
R 5 or Jun bar 30' oak N 71° 35' E 277  
16' oak N 20° 45' W 45 1/2

N.W. cor 12' Oak S 20° W 60  
12' " S 25° E 72

T 2-2 S 12 8 W

114 bet 12 + 13 Rocks 30' Oak N 40° 35' E 273 1/2  
12' Maple S 72° E 63 1/2

N.W. cor. D.L.C # 50

Seed stone 8" ash N 34° E 1 1/2  
5' Maple S 120° E 28 1/2

50  
138  
7

MW cor of 38

~~47° 18' L~~ 148° 555° E 555° E

A 47° 18' L 4 1/5 297° N 77 1/2° E N 77° 42' E

B 50° 33' R 12° 03 3 1/2 180° N 83° E N 83° 43 1/2° E

C 0° 22' R 1° 03 132° 6 N 84° 0° E N 84° 15' E

D: # 16 N 10° - 118° 41' R 237° 37 522° 58' 2 W

15 site 15 67° 51' R 136 0' 221° 588° 10' E 589° 01' 2 E

17 50° 26' R 11° 10 - 470° 583° 24 1/2° E

18 26° 57' L 53° 35 - 206° N 69 1/2° E N 69° 46° E

19 20° 18' R 40° 52 9° 300° 189° 589° 48° E

20 16° 0' N - 205° N 74° 12° E

m6 cor c 38, S/K. Marked

24° Eir N 30° W 17°  
30° W! ir N 89 1/2° 35°

C.S. File No. 11/4

360  
126  
234

360  
126  
234

5735

2982

7410

C

028  
4057

3

308

6037

11615

80  
20  
110  
20

3909

116

116  
127  
327  
131

120  
218  
220  
220

15953

126001

6323

10127

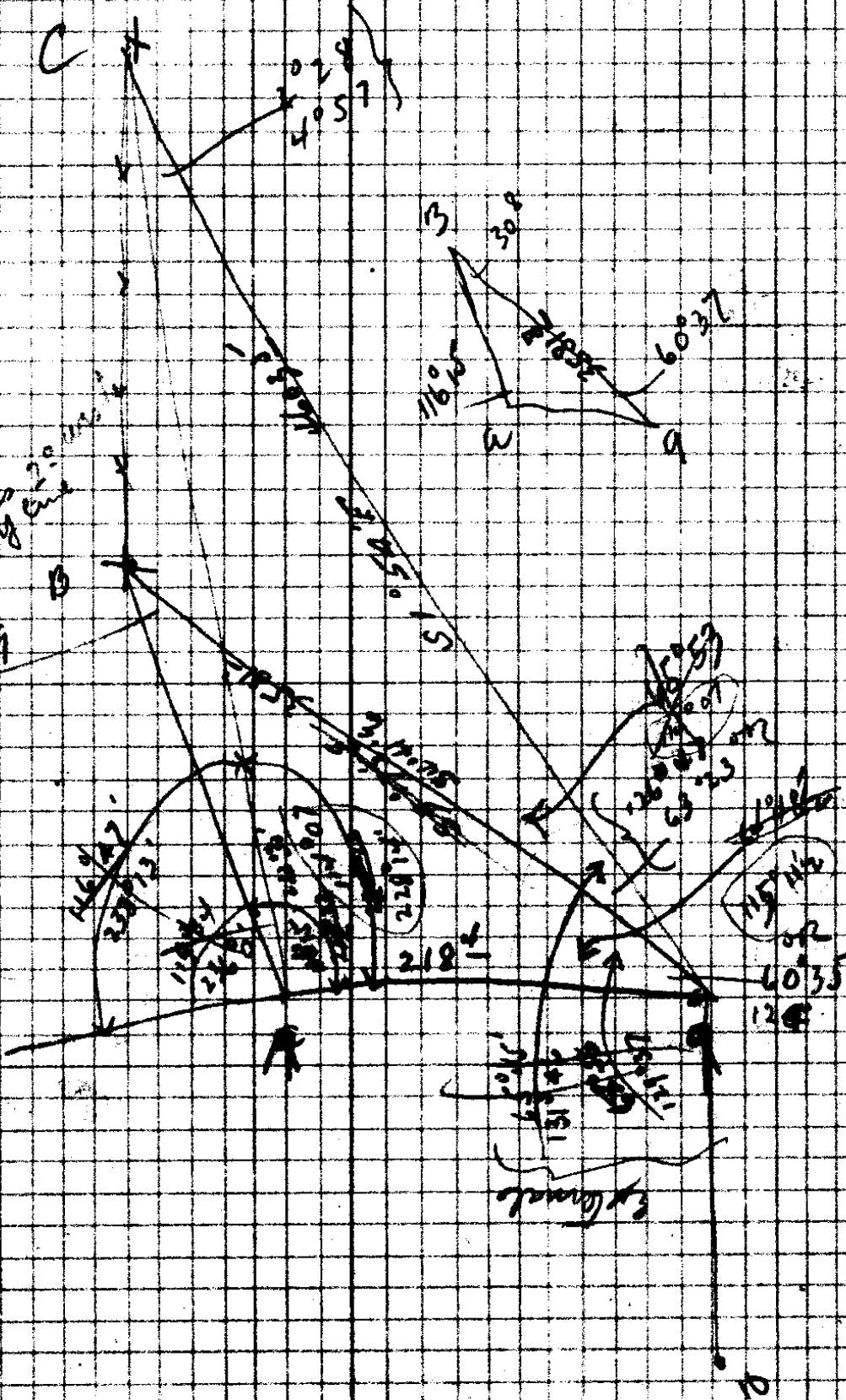
115712

102

4035

128

Exp. (Lands)



Var 22° 05'

stK

90° RT

11°

concl.

N 49 1/2° E

stK.

78° 11 1/2

37 1/2

N 9° W

N 11° 19' E

cl. Cor.

90° 41' R

~~215 1/2~~ 75°

S 78° E

A Corner

26° 00' R

443 1/2

18° W. O

N 2 1/2° E

433 1/2

S 8° W

B

82° R

482 1/2

194 1/2

137 1/2

C

cor

S 8° W

1752  
1752  
3

16  
702.9  
160 3  
91

1602.4  
1404.3  
198.1

132.5  
132.5

B  
266  
190  
190

B 5 Co West of Jensen

C. S. File No. 17/4

143 <sup>2</sup>

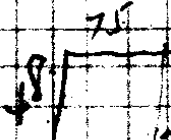
$$\begin{array}{r} 578 \\ 17 \\ \hline 595 \\ 89 \\ \hline 684 \end{array}$$

$$\begin{array}{r} N8920E \\ 7917 \\ \hline 1199 \end{array}$$

$$\begin{array}{r} 271 \\ 18 \\ \hline 44.9 \end{array}$$

$$\begin{array}{r} 46 \\ 78 \\ \hline 124 \end{array}$$

$$\begin{array}{r} 78 \\ 8 \\ \hline 86 \end{array}$$



876 <sup>2</sup>

876 <sup>2</sup>

1.5 ans

$$\begin{array}{r} 1149 \\ 15 \\ \hline 1159 \end{array}$$

$$\begin{array}{r} 305 \\ 9 \\ \hline 296 \end{array}$$

300 x 2182

$$\begin{array}{r} 50 \\ 20 \\ \hline 70 \end{array}$$

$$\begin{array}{r} 1195 \\ 20 \\ \hline 1175 \end{array}$$

9	3° 27' R 7° 09'	-	258 <sup>5</sup>	N 27° 10' E N 30° 44' E
10	10° 37' R 21° 30'		513 <sup>2</sup>	N 41° E N 41° 29' E
11	0° 02' L 0° 15' R	4 3/4	300 <sup>0</sup> 274 <sup>5</sup>	N 41° 37' E
12	1° 49' R 3° 12'	3"	299 <sup>2</sup>	N 43° 28' E
13	15° 01' L 29° 45'	3 1/2	241 <sup>4</sup>	N 28° 25' E
14	4° 31' L 8° 40'	-	331 <sup>2</sup>	N 74° 18' E
15	1° 06' L 1° 54'		356 <sup>6</sup>	N 22° 55' E N 23° 18' E
16				

set con 13 North of 16  
Drove Oak stick, Marked  
20" Fir S 60° E 21" JF

set g	site 10			N 30° 44' E
	35° 36' L 68° 04'			S 4° 41' E S 3° 17' E
B				
IC	32° 48' L 65° 17'			S 1° 54' E

C. S. File No 17/4

Cor. by Rules.

Set STK Marked 18" W.O  
 $94^{\circ} 6' 2''$

442

2105

251°

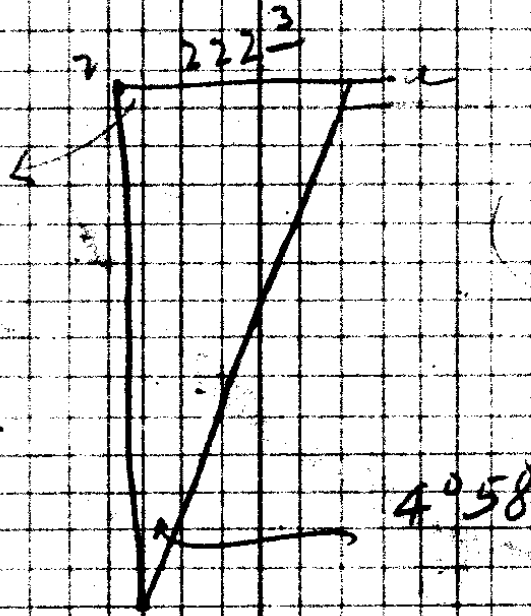
88

205°

197

260

142



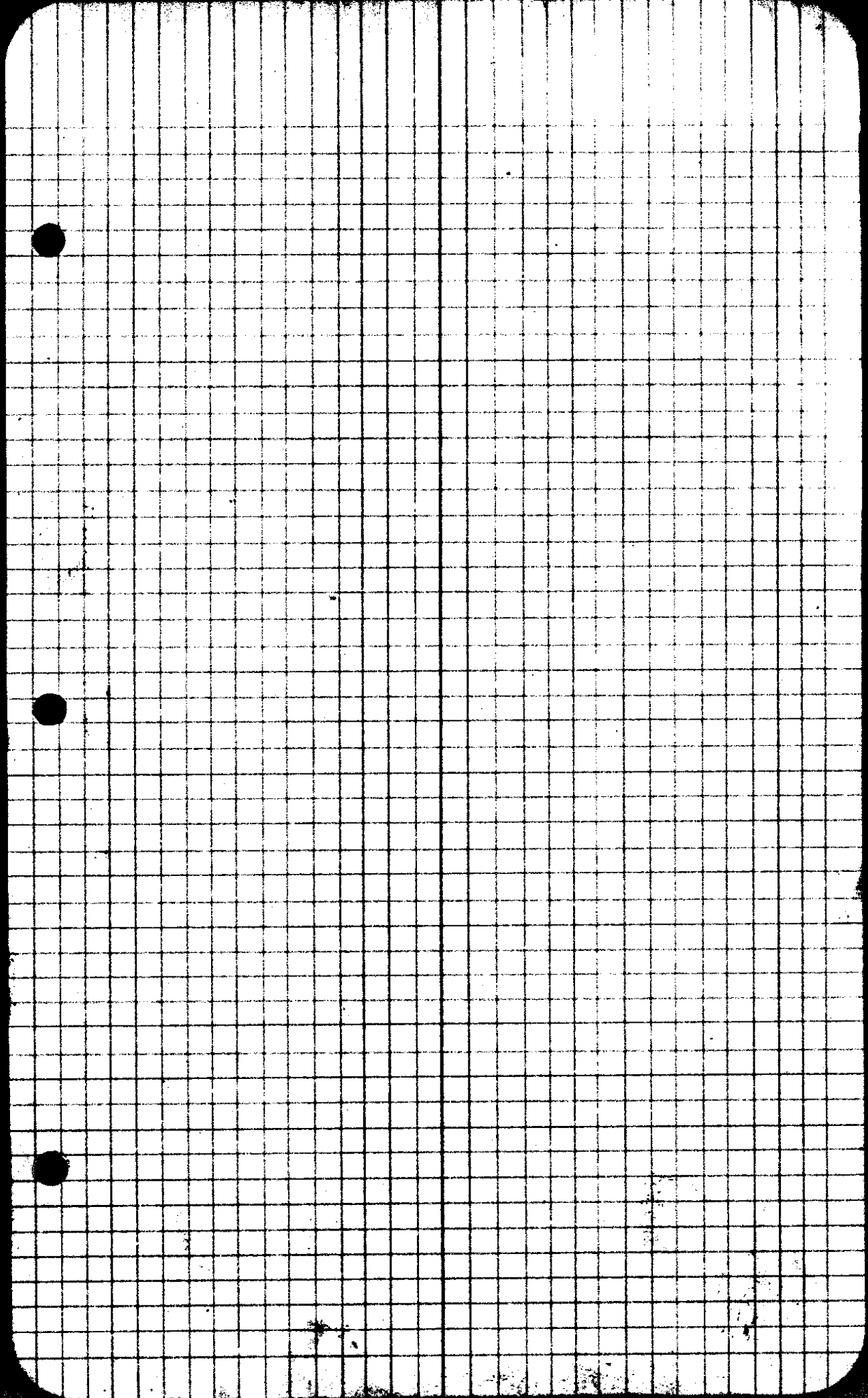
$$\frac{1.2}{\sin 87^{\circ} 53'} = \frac{222^3}{\sin 40^{\circ} 8'} = 2565^3$$

From Car bet 4 & 5. Run due East to intersect fence line, from Car

Cor. By River. River is 50' long. Cor.  
 5° 168<sup>8</sup> N19°2'E N18°39'E  
 + 2240  
 50

Cor By fence

2	5°25'R 11°02'	3°	210 <sup>6</sup>	N23°40'E	N24°10'E
3	10°0'R 20°18'	5°	252 <sup>0</sup>	N34°10'E	N34°10'E
4	105°49'L 211°22'	-	88 <sup>1</sup>		N71°22'W
Cor	Set stk 330'17R 660'52	12" U.D. 7 1/2	N74°6' 206 <sup>7</sup>	11 <sup>2</sup> N78°2'E	N78°2'E
5	8°04'R 16°26'	13 1/2	206 <sup>7</sup> 203 <sup>5</sup>		N89°57'E
6	21°17L 42°14'	15 1/2	270 <sup>0</sup>	N66 3/4'E	N66 3/4'E
7	25°24L 50°30'	11 1/2	145 <sup>2</sup>		N40°55'E
8	13°55L 27°30'	-	298 <sup>7</sup>	N76°2'E	N27°10'E
9					



CS FILE FOLDER

CONTAINS

MORE

INFORMATION