

List of Reports in file

1 T 21-5 NE Cor. Estab D.L.C #37
 2 T 21-5 SE Cor. Estab D.L.C #37
 3 T 26-3 SW Cor. French D.L.C #40
 4 T 26-3 SE Cor. Thorp D.L.C #38
 5 T 22-8 Int. & S. Line Sawyer D.L.C #49
 6 T 29-3 1/4 Cor. 28/33
 7 T 29-3 28/27
 8 T 29-3 38/34
 9 T 29-3 W/1/6 S. Line of 33'
 10 T 29-3 29/28
 11 T 29-3 32/33
 12 T 30-4 1/4 Cor. 2/11
 13 T 30-4-1 east 1/4 Cor.
 14 T 23-4 1/4 Cor. 20/21
 15 T 23-4 20/21
 16 T 23-4 29/28
 17 T 23-4 29/28
 18 T 30-6 S 1/4 Sec 32
 19 T 30-6 N 1/4 Sec 5
 20 T 33-6 N 1/4 Sec 5
 21 T 30-6 1/4 14/22
 22 T 30-6 NE Cor. Flint D.L.C #45
 23 T 28-6 N 1/4 Sec 1
 24 T 27-6 N.W. Int & Cor. McKinney D.L.C #50
 25 T 24-3 20/21
 26 T 24-3 29/28
 27 T 24-3 30/29
 28 T 23-5 1/4 Cor. 28/26
 29 T 30-4 N/E Cor. D.L.C #43
 30 T 27-3 5/14
 31 T 27-3 6/19
 32 T 27-3 1/4 Cor. 5/8
 33 T 28-5 1/4 Cor. 2/2
 34 T 27-5 11/12
 35 T 27-5 12/13
 36 T 27-5 13/14
 37 T 27-5 14/15
 38 T 27-5 15/16
 39 T 27-5 16/17
 40 T 27-5 17/18
 41 T 27-5 18/19
 42 T 27-5 19/20
 43 T 27-5 20/21
 44 T 27-5 21/22
 45 T 27-5 22/23
 46 T 27-5 23/24
 47 T 27-5 24/25
 48 T 27-5 25/26
 49 T 27-5 26/27
 50 T 27-5 27/28
 51 T 27-5 28/29
 52 T 27-5 29/30
 53 T 27-5 30/31
 54 T 27-5 31/32
 55 T 27-5 32/33
 56 T 27-5 33/34
 57 T 27-5 34/35
 58 T 27-5 35/36
 59 T 27-5 36/37
 60 T 27-5 37/38
 61 T 27-5 38/39
 62 T 27-5 39/40
 63 T 27-5 40/41
 64 T 27-5 41/42
 65 T 27-5 42/43
 66 T 27-5 43/44
 67 T 27-5 44/45
 68 T 27-5 45/46
 69 T 27-5 46/47
 70 T 27-5 47/48
 71 T 27-5 48/49
 72 T 27-5 49/50
 73 T 27-5 50/51
 74 T 27-5 51/52
 75 T 27-5 52/53
 76 T 27-5 53/54
 77 T 27-5 54/55
 78 T 27-5 55/56
 79 T 27-5 56/57
 80 T 27-5 57/58
 81 T 27-5 58/59
 82 T 27-5 59/60
 83 T 27-5 60/61
 84 T 27-5 61/62
 85 T 27-5 62/63
 86 T 27-5 63/64
 87 T 27-5 64/65
 88 T 27-5 65/66
 89 T 27-5 66/67
 90 T 27-5 67/68
 91 T 27-5 68/69
 92 T 27-5 69/70
 93 T 27-5 70/71
 94 T 27-5 71/72
 95 T 27-5 72/73
 96 T 27-5 73/74
 97 T 27-5 74/75
 98 T 27-5 75/76
 99 T 27-5 76/77
 100 T 27-5 77/78
 101 T 27-5 78/79
 102 T 27-5 79/80
 103 T 27-5 80/81
 104 T 27-5 81/82
 105 T 27-5 82/83
 106 T 27-5 83/84
 107 T 27-5 84/85
 108 T 27-5 85/86
 109 T 27-5 86/87
 110 T 27-5 87/88
 111 T 27-5 88/89
 112 T 27-5 89/90
 113 T 27-5 90/91
 114 T 27-5 91/92
 115 T 27-5 92/93
 116 T 27-5 93/94
 117 T 27-5 94/95
 118 T 27-5 95/96
 119 T 27-5 96/97
 120 T 27-5 97/98
 121 T 27-5 98/99
 122 T 27-5 99/100
 123 T 27-5 100/101
 124 T 27-5 101/102
 125 T 27-5 102/103
 126 T 27-5 103/104
 127 T 27-5 104/105
 128 T 27-5 105/106
 129 T 27-5 106/107
 130 T 27-5 107/108
 131 T 27-5 108/109
 132 T 27-5 109/110
 133 T 27-5 110/111
 134 T 27-5 111/112
 135 T 27-5 112/113
 136 T 27-5 113/114
 137 T 27-5 114/115
 138 T 27-5 115/116
 139 T 27-5 116/117
 140 T 27-5 117/118
 141 T 27-5 118/119
 142 T 27-5 119/120
 143 T 27-5 120/121
 144 T 27-5 121/122
 145 T 27-5 122/123
 146 T 27-5 123/124
 147 T 27-5 124/125
 148 T 27-5 125/126
 149 T 27-5 126/127
 150 T 27-5 127/128
 151 T 27-5 128/129
 152 T 27-5 129/130
 153 T 27-5 130/131
 154 T 27-5 131/132
 155 T 27-5 132/133
 156 T 27-5 133/134
 157 T 27-5 134/135
 158 T 27-5 135/136
 159 T 27-5 136/137
 160 T 27-5 137/138
 161 T 27-5 138/139
 162 T 27-5 139/140
 163 T 27-5 140/141
 164 T 27-5 141/142
 165 T 27-5 142/143
 166 T 27-5 143/144
 167 T 27-5 144/145
 168 T 27-5 145/146
 169 T 27-5 146/147
 170 T 27-5 147/148
 171 T 27-5 148/149
 172 T 27-5 149/150
 173 T 27-5 150/151
 174 T 27-5 151/152
 175 T 27-5 152/153
 176 T 27-5 153/154
 177 T 27-5 154/155
 178 T 27-5 155/156
 179 T 27-5 156/157
 180 T 27-5 157/158
 181 T 27-5 158/159
 182 T 27-5 159/160
 183 T 27-5 160/161
 184 T 27-5 161/162
 185 T 27-5 162/163
 186 T 27-5 163/164
 187 T 27-5 164/165
 188 T 27-5 165/166
 189 T 27-5 166/167
 190 T 27-5 167/168
 191 T 27-5 168/169
 192 T 27-5 169/170
 193 T 27-5 170/171
 194 T 27-5 171/172
 195 T 27-5 172/173
 196 T 27-5 173/174
 197 T 27-5 174/175
 198 T 27-5 175/176
 199 T 27-5 176/177
 200 T 27-5 177/178
 201 T 27-5 178/179
 202 T 27-5 179/180
 203 T 27-5 180/181
 204 T 27-5 181/182
 205 T 27-5 182/183
 206 T 27-5 183/184
 207 T 27-5 184/185
 208 T 27-5 185/186
 209 T 27-5 186/187
 210 T 27-5 187/188
 211 T 27-5 188/189
 212 T 27-5 189/190
 213 T 27-5 190/191
 214 T 27-5 191/192
 215 T 27-5 192/193
 216 T 27-5 193/194
 217 T 27-5 194/195
 218 T 27-5 195/196
 219 T 27-5 196/197
 220 T 27-5 197/198
 221 T 27-5 198/199
 222 T 27-5 199/200
 223 T 27-5 200/201
 224 T 27-5 201/202
 225 T 27-5 202/203
 226 T 27-5 203/204
 227 T 27-5 204/205
 228 T 27-5 205/206
 229 T 27-5 206/207
 230 T 27-5 207/208
 231 T 27-5 208/209
 232 T 27-5 209/210
 233 T 27-5 210/211
 234 T 27-5 211/212
 235 T 27-5 212/213
 236 T 27-5 213/214
 237 T 27-5 214/215
 238 T 27-5 215/216
 239 T 27-5 216/217
 240 T 27-5 217/218
 241 T 27-5 218/219
 242 T 27-5 219/220
 243 T 27-5 220/221
 244 T 27-5 221/222
 245 T 27-5 222/223
 246 T 27-5 223/224
 247 T 27-5 224/225
 248 T 27-5 225/226
 249 T 27-5 226/227
 250 T 27-5 227/228
 251 T 27-5 228/229
 252 T 27-5 229/230
 253 T 27-5 230/231
 254 T 27-5 231/232
 255 T 27-5 232/233
 256 T 27-5 233/234
 257 T 27-5 234/235
 258 T 27-5 235/236
 259 T 27-5 236/237
 260 T 27-5 237/238
 261 T 27-5 238/239
 262 T 27-5 239/240
 263 T 27-5 240/241
 264 T 27-5 241/242
 265 T 27-5 242/243
 266 T 27-5 243/244
 267 T 27-5 244/245
 268 T 27-5 245/246
 269 T 27-5 246/247
 270 T 27-5 247/248
 271 T 27-5 248/249
 272 T 27-5 249/250
 273 T 27-5 250/251
 274 T 27-5 251/252
 275 T 27-5 252/253
 276 T 27-5 253/254
 277 T 27-5 254/255
 278 T 27-5 255/256
 279 T 27-5 256/257
 280 T 27-5 257/258
 281 T 27-5 258/259
 282 T 27-5 259/260
 283 T 27-5 260/261
 284 T 27-5 261/262
 285 T 27-5 262/263
 286 T 27-5 263/264
 287 T 27-5 264/265
 288 T 27-5 265/266
 289 T 27-5 266/267
 290 T 27-5 267/268
 291 T 27-5 268/269
 292 T 27-5 269/270
 293 T 27-5 270/271
 294 T 27-5 271/272
 295 T 27-5 272/273
 296 T 27-5 273/274
 297 T 27-5 274/275
 298 T 27-5 275/276
 299 T 27-5 276/277
 300 T 27-5 277/278
 301 T 27-5 278/279
 302 T 27-5 279/280
 303 T 27-5 280/281
 304 T 27-5 281/282
 305 T 27-5 282/283
 306 T 27-5 283/284
 307 T 27-5 284/285
 308 T 27-5 285/286
 309 T 27-5 286/287
 310 T 27-5 287/288
 311 T 27-5 288/289
 312 T 27-5 289/290
 313 T 27-5 290/291
 314 T 27-5 291/292
 315 T 27-5 292/293
 316 T 27-5 293/294
 317 T 27-5 294/295
 318 T 27-5 295/296
 319 T 27-5 296/297
 320 T 27-5 297/298
 321 T 27-5 298/299
 322 T 27-5 299/300
 323 T 27-5 300/301
 324 T 27-5 301/302
 325 T 27-5 302/303
 326 T 27-5 303/304
 327 T 27-5 304/305
 328 T 27-5 305/306
 329 T 27-5 306/307
 330 T 27-5 307/308
 331 T 27-5 308/309
 332 T 27-5 309/310
 333 T 27-5 310/311
 334 T 27-5 311/312
 335 T 27-5 312/313
 336 T 27-5 313/314
 337 T 27-5 314/315
 338 T 27-5 315/316
 339 T 27-5 316/317
 340 T 27-5 317/318
 341 T 27-5 318/319
 342 T 27-5 319/320
 343 T 27-5 320/321
 344 T 27-5 321/322
 345 T 27-5 322/323
 346 T 27-5 323/324
 347 T 27-5 324/325
 348 T 27-5 325/326
 349 T 27-5 326/327
 350 T 27-5 327/328
 351 T 27-5 328/329
 352 T 27-5 329/330
 353 T 27-5 330/331
 354 T 27-5 331/332
 355 T 27-5 332/333
 356 T 27-5 333/334
 357 T 27-5 334/335
 358 T 27-5 335/336
 359 T 27-5 336/337
 360 T 27-5 337/338
 361 T 27-5 338/339
 362 T 27-5 339/340
 363 T 27-5 340/341
 364 T 27-5 341/342
 365 T 27-5 342/343
 366 T 27-5 343/344
 367 T 27-5 344/345
 368 T 27-5 345/346
 369 T 27-5 346/347
 370 T 27-5 347/348
 371 T 27-5 348/349
 372 T 27-5 349/350
 373 T 27-5 350/351
 374 T 27-5 351/352
 375 T 27-5 352/353
 376 T 27-5 353/354
 377 T 27-5 354/355
 378 T 27-5 355/356
 379 T 27-5 356/357
 380 T 27-5 357/358
 381 T 27-5 358/359
 382 T 27-5 359/360
 383 T 27-5 360/361
 384 T 27-5 361/362
 385 T 27-5 362/363
 386 T 27-5 363/364
 387 T 27-5 364/365
 388 T 27-5 365/366
 389 T 27-5 366/367
 390 T 27-5 367/368
 391 T 27-5 368/369
 392 T 27-5 369/370
 393 T 27-5 370/371
 394 T 27-5 371/372
 395 T 27-5 372/373
 396 T 27-5 373/374
 397 T 27-5 374/375
 398 T 27-5 375/376
 399 T 27-5 376/377
 400 T 27-5 377/378
 401 T 27-5 378/379
 402 T 27-5 379/380
 403 T 27-5 380/381
 404 T 27-5 381/382
 405 T 27-5 382/383
 406 T 27-5 383/384
 407 T 27-5 384/385
 408 T 27-5 385/386
 409 T 27-5 386/387
 410 T 27-5 387/388
 411 T 27-5 388/389
 412 T 27-5 389/390
 413 T 27-5 390/391
 414 T 27-5 391/392
 415 T 27-5 392/393
 416 T 27-5 393/394
 417 T 27-5 394/395
 418 T 27-5 395/396
 419 T 27-5 396/397
 420 T 27-5 397/398
 421 T 27-5 398/399
 422 T 27-5 399/400
 423 T 27-5 400/401
 424 T 27-5 401/402
 425 T 27-5 402/403
 426 T 27-5 403/404
 427 T 27-5 404/405
 428 T 27-5 405/406
 429 T 27-5 406/407
 430 T 27-5 407/408
 431 T 27-5 408/409
 432 T 27-5 409/410
 433 T 27-5 410/411
 434 T 27-5 411/412
 435 T 27-5 412/413
 436 T 27-5 413/414
 437 T 27-5 414/415
 438 T 27-5 415/416
 439 T 27-5 416/417
 440 T 27-5 417/418
 441 T 27-5 418/419
 442 T 27-5 419/420
 443 T 27-5 420/421
 444 T 27-5 421/422
 445 T 27-5 422/423
 446 T 27-5 423/424
 447 T 27-5 424/425
 448 T 27-5 425/426
 449 T 27-5 426/427
 450 T 27-5 427/428
 451 T 27-5 428/429
 452 T 27-5 429/430
 453 T 27-5 430/431
 454 T 27-5 431/432
 455 T 27-5 432/433
 456 T 27-5 433/434
 457 T 27-5 434/435
 458 T 27-5 435/436
 459 T 27-5 436/437
 460 T 27-5 437/438
 461 T 27-5 438/439
 462 T 27-5 439/440
 463 T 27-5 440/441
 464 T 27-5 441/442
 465 T 27-5 442/443
 466 T 27-5 443/444
 467 T 27-5 444/445
 468 T 27-5 445/446
 469 T 27-5 446/447
 470 T 27-5 447/448
 471 T 27-5 448/449
 472 T 27-5 449/450
 473 T 27-5 450/451
 474 T 27-5 451/452
 475 T 27-5 452/453
 476 T 27-5 453/454
 477 T 27-5 454/455
 478 T 27-5 455/456
 479 T 27-5 456/457
 480 T 27-5 457/458
 481 T 27-5 458/459
 482 T 27-5 459/460
 483 T 27-5 460/461
 484 T 27-5 461/462
 485 T 27-5 462/463
 486 T 27-5 463/464
 487 T 27-5 464/465
 488 T 27-5 465/466
 489 T 27-5 466/467
 490 T 27-5 467/468
 491 T 27-5 468/469
 492 T 27-5 469/470
 493 T 27-5 470/471
 494 T 27-5 471/472
 495 T 27-5 472/473
 496 T 27-5 473/474
 497 T 27-5 474/475
 498 T 27-5 475/476
 499 T 27-5 476/477
 500 T 27-5 477/478
 501 T 27-5 478/479
 502 T 27-5 479/480
 503 T 27-5 480/481
 504 T 27-5 481/482
 505 T 27-5 482/483
 506 T 27-5 483/484
 507 T 27-5 484/485
 508 T 27-5 485/486
 509 T 27-5 486/487
 510 T 27-5 487/488
 511 T 27-5 488/489
 512 T 27-5 489/490
 513 T 27-5 490/491
 514 T 27-5 491/492
 515 T 27-5 492/493
 516 T 27-5 493/494
 517 T 27-5 494/495
 518 T 27-5 495/496
 519 T 27-5 496/497
 520 T 27-5 497/498
 521 T 27-5 498/499
 522 T 27-5 499/500
 523 T 27-5 500/501
 524 T 27-5 501/502
 525 T 27-5 502/503
 526 T 27-5 503/504
 527 T 27-5 504/505
 528 T 27-5 505/506
 529 T 27-5 506/507
 530 T 27-5 507/508
 531 T 27-5 508/509
 532 T 27-5 509/510
 533 T 27-5 510/511
 534 T 27-5 511/512
 535 T 27-5 512/513
 536 T 27-5 513/514
 537 T 27-5 514/515
 538 T 27-5 515/516
 539 T 27-5 516/517
 540 T 27-5 517/518
 541 T 27-5 518/519
 542 T 27-5 519/520
 543 T 27-5 520/521
 544 T 27-5 521/522
 545 T 27-5 522/523
 546 T 27-5 523/524
 547 T 27-5 524/525
 548 T 27-5 525/526
 549 T 27-5 526/527
 550 T 27-5 527/528
 551 T 27-5 528/529
 552 T 27-5 529/530
 553 T 27-5 530/531
 554 T 27-5 531/532
 555 T 27-5 532/533
 556 T 27-5 533/534
 557 T 27-5 534/535
 558 T 27-5 535/536
 559 T 27-5 536/537
 560 T 27-5 537/538
 561 T 27-5 538/539
 562 T 27-5 539/540
 563 T 27-5 540/541
 564 T 27-5 541/542
 565 T 27-5 542/543
 566 T 27-5 543/544
 567 T 27-5 544/545

RENEWED GOVERNMENT CORNERS.

T. 21 S., R 5 W., W.M.

NE corner of the Elijah T. Estes D.L.C No. 37

Location identified from the stump of original bearing tree which I chopped out and found the BT scribe marks in good condition 40" fir S 80°E 63 lks.

Original Bearing tree 40" Fir S 2°W 612 lks in good shap, bark blaxed and has been remarked.

For the corner blazed and rescribed a fir 30" diam. at the corner of property fence.

April 25 1941.

SE corner of Elijah T. Estes D.L.C No. 37

Location identified from an old post bearing scribe marks lying on the ground and a cedar 28 in. diam. S 75°E 87.1 ft. which has been blazed and scribed by some previous surveyor. I found the rotted stumps of a hemlock and a cedar which checked for bearing and distance with those shown in the original records of the government survey. No scribe marks were visible on these old stumps.

Set an iron bar, 1/2"x2 ins 36 ins long 24 ins. in the ground for the corner. Drove a Yewwood post alongside scribed DLC #7 CS.

Remarked the 28" cedar S 75°E 87.1 ft. and marked a new BT a cedar ~~24"~~ 24" diam. N 42°W 59.1 ft.

April 26, 1941.

T 26 S R 5 W

SW corner John H. French D.L.C. No. 40.

Position identified from original BT and Bt as marked by County Surveyor H. L. Eppstein 1930.

Drove a 1"x48" iron pipe 16" under ground and a stone 8"x14"x18" 16" in the ground, marked with a x and 40.

April 28, 1941.

SE corner Wm. W Tharp D.L.C. No. 38.

Position identified from original BT and BT as marked by County Surveyor H. L. Eppstein 1930.

Set a stone 10"x12"x18" 14" underground, marked with a x and 38. Placed 2 8"x8"x8" boulders on top.

April 23, 1941.

Set by Ben. B. Irving Dep. Co. Surveyor.
Witness N. E. Richardson.

C. S. File No. 16/52

BEN B. IRVING

REGISTERED
Civil Engineer and Surveyor

Roseburg, Oregon

Renewed Government Corners.

T 22 S., R 8 W., WM.

Interior angle corner on the south boundary of the Andrew Sawyer D.L.C. No. 49. This corner is at the intersection of the south boundary and the meander line on the right bank of the Umpqua River.

Location identified from both of the original bearing trees which have scribe marks visible but in very poor condition.

Drove an iron pipe $\frac{1}{2}$ "x48" - 42" in the ground for the corner and set a cedar post alongside. An oak 16 ins. diam. bears N 49°E 33.5 ft. and a maple 12 ins. diam. bears S 72°W 52.0 ft. both blazed and scribed CL ~~40~~ CS BT

May 26, 1941

Ben. B. Irving Deputy Co. Sury.
N.E. Richardson
Loren Weber

T 29 S., R 3 W. WM.

$\frac{1}{4}$ section corner sections 28 and 33.

This corner is as described in the original government field notes. the cedar corner tree is dead but excellently preserved. Drove a $\frac{1}{2}$ "x48" iron pipe at the base of the corner tree and remarked both original bearing trees.

May 27, 1941.

Section corner to sections 27-28-33-34.

Location identified from OBT S 89°W 51 lks. which I chop out and find scribe marks in excellent condition. O.B.T N89°W 53 lks standing and in good shape remarked but not chopped out. OBT N 62°E 73 lks. standing and in good shape remarked but not chopped out.

Drove a $1\frac{1}{4}$ "x48" iron pipe 40" in the ground for the corner and set a 6"x6"x48" Yewwood post alongside. Blazed and scribed a fir 24 ins. diam. which bears S 6°E 23 lks for a new BT replacing the OBT S 70°E 76 lks which has been destroyed.

May 29, 1941.

BEN B. IRVING

REGISTERED
Civil Engineer and Surveyor

Roseburg, Oregon

Renewed Government Corners.

T 29 S., R 3 W., WM.

Post on the south boundary of section 33 20 chs. east from the SW corner of section 33.

Location identified from OBT a fir 36 ins. diam. which bears N 28°W 7 lks. and which I remark. Set a 4"x4"x42" fir post for the corner.

May 29, 1941.

Section Corner sections 28-29-32-33.

Location identified from OBT a fir 24" which bears N 60°W 13 lks. which has fallen down, scribe marks visible. A fir snag completely burned S 20°E 43 lks. a laurel 42 ins diam. N 15°E 88 lks alive and in excellent shape which I did not chop out but marked with a X

Set a cedar post 4"x6"x48" - 15" in the ground for the corner and blazed and scribed new bearing trees as follows:

- a fir 26 ins. diam. which bears N 22°W 39 lks.
- a fir 12 ins. diam. which bears S 21°E 90 lks.
- a cedar 42 ins. diam. which bears S 59°W 26 lks.
- a cedar 12 ins. diam. which bears N 29°E 76 lks.

May 31, 1941.

T 30 S., R 4 W., WM.

$\frac{1}{4}$ section corner section 2 and 11.

Location identified from BT as set by Frear in 1918 which I chop out. This BT is N 75°E 2.00 chs. BT S 52°W 1.52 chs has been cut and has rotted out.

Set a red jasper boulder 10"x14"x16"- 12 ins underground for the corner and scribed a prune S 75°W 22 lks. This corner is in the edge of a prune orchard near entrance to property of Mrs. Baum.

May June 2, 1941.

Set by Ben. B. Irving. Dep. Co. Surveyor.
N. E. Richardson
Loren Weber.
Gene Schrum.

E $\frac{1}{4}$ Cor Sec 1, T 32S R 4W W.M.

Set this corner from Orig Fir BT- (10")
which is N 68° E 8 Links, the orig
8" Chinquapin S 65° W 4 Links, is entirely
destroyed - set a 4x4 chinquapin post and
marked a new 24" Fir B.T N 48° W 12 ft
marked $\frac{1}{4}$ S 1, T 32S R 4W C.S. BT.

Sept 23, 1940

Arthur Boyer

Joe Sheffabarger } witnesses
Dick Dehrig }

16/55

Mar 6th 1940

Harvey, -

Set 4"x4"x 36' squared fir post
Renewed $\frac{1}{4}$ Cor between Sec's 20^{9/11} & 21
T23 S R 4 W from one orig^{Fir} B.T. which
is still sound ^{9/11} O.K. - remarked (rescribed)
it on bark $\frac{1}{4}$ S 21 T 23 S R 4 W CS. B.T. - Found
the orig^{Fir} tree $S 15^{\circ} W 7$ lks. which is down but the
stump hole is still O.K. (found scribe marks on it)
Set new tree 36" Fir $S 62^{\circ} W 60$ ft, on slope,
marked $\frac{1}{4}$ S 20, T23 S R 4 W CS B.T.

12
wits { Roamie Howard
Merlin E Allen
Joe Pinkston
Ted Shell

Renewed also Corner to Secs.

20, 21, 28^{9/11} & 29 T23/R4W - Found
only one tree, the W. Oak $N 18^{\circ} \frac{3}{4} W 878$ Link
it is still sound + standing, set 4"x4"x 40"
Cedar post marked $S 20 - S 21, S 28 + S 29$ T23 R4
from which new trees were marked

36" Wye Cedar $N 14^{\circ} E 85.3$ ft on slope marked
20" Forked Ash $S 54^{\circ} E 290.3$ ft " " $S 21$ T23 S
12" Cedar $S 81^{\circ} W 205.2$ ft " " $S 28$ R4 W
CS B.T.

Set also $W \frac{1}{6}$ Cor of SW $\frac{1}{4}$ Sec 21 - on true N+S Sec 21
mid dist bet $W \frac{1}{4}$ Cor Sec 21 + SW Cor Sec 21 - T23/R4W
Set 6x6x 12"-15" deep, rock + 3" Cedar post marked $\frac{1}{6}$ S 21 T23
from which 24" Fir brs $S 62^{\circ} E 117.3$ marked $\frac{1}{6}$ S 21 T23 R4 W
30" " " $N 17^{\circ} W 108.5$ " " $\frac{1}{6}$ S 21

13
Same wits.
as above
Call on 3/6/1940
Same wits

C. S. File No. 1655 measurements on slope
Boyer

15

South $\frac{1}{4}$ Sec 32 T32S R6W
28" Fir N24°-12'W 31.8 feet New
O.B.T. 20' Fir stump N21°E 7.5 feet
 $\frac{1}{2}$ " x 30" Galv Iron Pipe,

14

E 198.5 ft. to N $\frac{1}{4}$ Sec. 5 T33S R6W
 $\frac{1}{2}$ Eye Bolt
X O.B.T. S 25°E E 6.5 feet stump

Removed Corner:

of ~~Jane~~ Richardson
Wendroth

Date
Feb. 1942

RENEWED GOVERNMENT CORNERS

T 30 S., R 6 W., WM.

17 Rec
✓
 $\frac{1}{4}$ section corner between sections 14 and 23.
Position identified from badly rotted stump of OBT S 45°E 57 lks.
Old blaze chopped out letters BT plainly visible, remainder of
markings have been obliterated.

Drove an iron pipe 60 ins. long for the corner 48 ins in the
ground. Set a 6" square post alongside. New BTs.

W.O. 18" diam. bears S 79°E 34.0 ft. scribed $\frac{1}{4}$ S S23 CS BT
B.O. 20" " " N 49°W 50.0 ft. " $\frac{1}{4}$ S S14 CS BT

NW corner Isa ac A. Flint DLC No 45 .

18 Rec
Position identified from fence lines as given in deed descriptions
and bearings and distances from the South boundary of DLC 45 and
Sec. 23 and the $\frac{1}{4}$ sec. corner on the North boundary of Sec. 23.
All local evidences of the original corner were destroyed in the
construction of the old Nickel Mine road. The location selected
satisfies the relationships given in the original field notes
and present existing conditions.

Drove and iron pipe 48" long flush with the ground in cutbank
of old Nickel Mine road at or under a n 8 inch B.O. which was
marked NW Cor DLC 45 CS BT. New bearing trees were blazed and
scribed as follows:-

W.O. 14" diam. S 86°E 26.2 ft. scribed DLC 45 CS BT
B.O. 14" " S 27 $\frac{1}{2}$ °E 59.6 ft. " DLC 45 CS BT

Set by Ben. B. Irving, Deputy Co. Surveyor.
March 20, 1939.
Witness R. L. Irving.

T 28 S., R 6 W., WM.

19 Rec
Standard $\frac{1}{4}$ section corner on the North boundary of Sec. 1.

Position identified from an OBT a 48" BO S 7°E 6.33 chs. which is
now a dead tree very sound and hard. Chopped out old blaze and
found original scribe marks in excellent condition.

Drove an iron rod $\frac{3}{8}$ " diam x 48" long 22" in the ground for
the corner. from which a n 8# oak bears S 67°W approx . 20'

Set by Ben. B. Irving Deputy Co. Surveyor.
March 9, 1939.
Witness R. L. Irving
Wm. Kohlhagen.

Re-newed Government Corners

T 27 S., R 6 W., WM.

NW Int. angle corner of the Wm. McKinney DLC No 50.

Rock 6"x12"x4" under ground in the county road leading from the Melrose road to the old Conn Ferry.

New Bearing trees all the old trees having been destroyed.

Black Oak 24" diam bears S 67°55'E 105.2 ft.

March 1939
Witness. R. L. Irving.

Ben. B. Irving
Deputy County Surveyor

20
REC

16/55

BEN B. IRVING

REGISTERED
Civil Engineer and Surveyor

Roseburg, Oregon

GOVERNMENT CORNERS RENEWED.

T 24 S R 3 W

Section corner 20-21-28-29

Location identified from original bearing trees as follows:

21 Cedar S $54\frac{1}{2}^{\circ}$ E 46 lks.

Cedar stub S 43° W 22 lks.

6" Yew Wood and scribe marks topped off N 85° W 16 lks. .

Fir down and rotted N 35° E 11 lks.

Set a Yew Wood post 5 ins. sq. for the corner from which

a cedar 36 ins. diam. bears S 54° E 46 lks.

a Yew wood 10 ins. diam. bears N 44° W 26 lks.

a Fir 8 ins. diam. bears N 52° E 15 lks.

a Fir 6 ins. diam. bears S $63\frac{1}{2}^{\circ}$ W 60 lks.

Aug. 11, 1928

Section corner 19-20-29-30-

22 Location identified from stumps of corner tree and all four original bearing trees. These trees are all rotten and broken off above the ground. The government field notes shows that this corner was renewed by Laban H, Wheeler in 1883 because the original corner as set by Byers had been burned out.

Set a cedar post 7x7x48 ins. in the center of the stump of the old corner tree, from which;

hemlock 24 ins. diam. bears N 57° E 109 lks.

Cedar 36 ins. diam. bears N 80° W 179 lks.

Fir 30 ins. diam bears S 15° E 161 lks.

Fir 24 ins diam bears S 37° W 164 lks.

Aug. 15, 1928.

Set by Ben. B. Irving, Deputy County Surveyor.

Witnessed by, Ed. Stearns

Royal Abeen

Chas. Jewett.

BEN B. IRVING

REGISTERED
Civil Engineer and Surveyor

Roseburg, Oregon

Renewed Government Corners.

T 23 S R 4 W WM.

*should be
T 23 S R 4 W WM
34 L.L. A 22 59
34 L.L. A 22 59 (DLC 30)
1-3-95*

$\frac{1}{4}$ section corner sections 23/26.

Location identified from an original bearing tree a 30" alder N 31°E 22 lks. This tree was dead and quite rotten but still standing on the bank of Pollock Creek. When chopped out scribe marks were visible in the fungus film between the surfaces of the original blaze.

Drove a 1" iron pipe 48" long 46" in the ground for the corner and set a cedar post 4" sq. 60 ins long along side, scribed $\frac{1}{4}$ S 23 - $\frac{1}{4}$ S 26 2 CS. from which a Fir 14 ins. diam. bears N 21°W 46.8 ft blazed and scribed $\frac{1}{4}$ S 23 CS BT. and a Fir 20" diam. bears S 22 $\frac{1}{2}$ °E 64.1 ft. blazed and scribed $\frac{1}{4}$ S 26 CS BT.

January 22, 1940.

Ben. B. Irving Deputy County Surveyor

Witnesses- N. E. Richardson

C. H. Daugherty

Carl Johnson

T. 30 S., R 4 W., WM.

NE Corner DLC No 43.

Location identified by a rock with a x chisled on the top. While I was on the ground a State Highway Department Grader cut the top off of this rock which is located in the edge of the road. Underneath this rock was another rock marked with a x with top demensions of 8"x10". A bottle was buried alongside. The rock which was on top was turned over and placed with its top flush with the ground and merked with a cross. this rock is 8"x10"x18". A maple 24 ins. diam. bears S 2°45'W 86.0 ft., An oak 54 ins. diam. bears N 83°35'W 161.0 ft., and a fir 20 ins. diam. bears N 55°15'E 126.2 ft., all blazed and scribed NE DLC 43 CS BT.

February 26 1940.

Ben. B. Irving, Deputy County Surveyor

Witnesses- N. E. Richardson.

R. L. Irving.

16/55

RENEWED GOVERNMENT CORNERS

T 27 S R 3 W

Section corner 4, 5, 8, and 9.

Location identified from all four of the original bearing trees as follows, A laurel 36 ins diam 1°W 50 lks., a laurel 30 ins diam. S 55°E 45 lks., a Fir 24 ins. diam N 45°W 15 lks. instead of N 10°W as recorded and a fir 48 ins. diam N 10°E _____ lks. instead of N 15°E 30 lks.

The original fir bearing trees were ~~in~~ reblaxed in the bark and scribed. and the following new bearing trees markes.

A cedar 10 ins diam S 30°E 29 lks.

A double white fir 24 ins diam S 50°W 46 lks.

Set a Yew wood post 3"x3"x48" for the corner.

Aug 11 1939

$\frac{1}{4}$ section corner between section 5 and 8.

Location identified from both original bearing trees on of which was chopped out and showed scribe marks in excellent shape. These trees are a fir 18 ins diam. S 20°W 4 lks and a fir 18 ins diam. N 20°E 4 lks.

Drove an iron pipe $\frac{1}{2}$ in. diam x 24 ins long 20 ins in the ground for the corner from which a fir 20 ins. diam. bears N 65°E 57 lks and a fir 18 ins. diam bears S 20°W 4 lks. (Original Beating Tree)

Both these corners set by Ben B. Irving Deputy County Surveyor. Witnesses. N. E. Richardson, N.G. Williams, Bert Delzene,

Aug 12 1939

T 28 S R 5 W

$\frac{1}{4}$ section corner between sections 15 and 22.

Location identified from an old stake from which a laurell formally was N 72°E 40 lks now has two large laurels which has stooled out from the original tree. and a white oak 50 is. bears S 12°W 57 lks with blaxes plain.

Set a post for the corner from which an oak 8 ins diam. bears S 45°W 38.6 ft. and an oak 9 ins. diam. bears N 68°E 77.8 ft.

Set by Ben. B. Irving Deputy County Surveyor. July 5, 1939. Witnesses, J. E. Pinkerton, R. L. Irving and Geo. Piper.

RENEWED GOVERNMENT CORNERS

T 27 S R 5 W.

Section corner 11, 12, 13 & 14.

Location identified from one original BT. a 30" W Oak S $61\frac{1}{2}^{\circ}$ E 450 lks.

Also old stump hole N $56\frac{1}{2}^{\circ}$ E 137 lks.

Set a rock 6"x12"x24" 12" in ground for corner marked with a X on top, 11 on NW face, 12 on NE face, 13 on SE face and 14 on SW face. Also 4 notches on the south and 1 notch on the east corners, and from which a white oak 6 ins. diam bears S 57° W 10 ft.
a white oak 14 ins. diam. bears N $30\frac{1}{2}^{\circ}$ W 45 ft.
a white oak 20 ins. diam. bears N 45° E 89.3 ft.
a white oak 30 ins. diam. bears S $61\frac{1}{2}^{\circ}$ E 297 ft. (Orig.BT.)

Set by Ben. B. Irving, Deputy Co. Surveyor Sept. 30, 1939.
Witnesses. N.E. Richardson, H. L. Epstein Jr. R. L. Irving.

$\frac{1}{4}$ section corner between sections 13 and 14.

Location identified from an original bearing tree which was chopped out and found to be in excellent shape S 68° E 173 lks. and the stump of a oak BT S 6° W 36 lks. showing the reverse of the original scribe marks BT.

Drove an iron pipe $\frac{3}{4}$ in. diam. and 36 ins. long 30 ins. in the ground from which an oak 9 ins. diam. bears South 24.3 ft. and an oak 9 ins diam bears N 10° E 33.6 ft.

Set by Ben. B. Irving Deputy County Surveyor Sept. 30 1939.
Witnesses NE. Richardson, H. L. Epstein Jr. & R. L. Irving.

T 27 S R 4 W.

SE corner of Wm. A. Willis D.L.C. No 45.

Position identified by a rock 6ins. x 14 ins. x 6 ins. above the ground.

Set new Bearing trees a Fir 24 ins. diam. which bears N 55° W 33 lks and a white oak 12 ins. diam S 49° E 65 lks. both blazed and scribed SE Cor DLC 45 CS BT,

Set by Ben. B. Irving Deputy County Surveyor. June 30, 1939
Witness, R. L. Irving and G. A. Lindbloom.

Previous Recorded

T21SR12W

Sec. Cor. 14-15-22-23.

Location identified from old stake and a B.T. Fir 24" diam S42°W serial T21SR12W 522 + The stake and tree are not original But were set apparently 35-40 years ago.

31

Set a 2 1/2" x 2 1/2" x 48" Post for corner from which a Fir 50" diam bears S82°W 50 ft. T21SR12W 522 C.S. BT
Althw 15 " " N70°E 23 1/2 " " 514 "
" 15 " " S33°E 47° " " 523 "
Fir 60 " " N38°W 32 3/4 " " 515 "

This location fits topography as recorded original field notes.

7 - 40

Meander Corner 15-22 on Right Bank Umpqua River

Location determined from line west from Sec Cor 14-15-22-23 and falls in a drainage ditch Set a 6" x 6" x 15" block of concrete in top of dike 33 ft west of corner for a witness corner and set a 2 x 6 x 48" post along side

32

7 - 40

T21SR12W

1/4 Cor 15-16.

Set by proportional measurement between Sec. Cor. 9-10-15-16 and Meander Cor 15-16.

33

Drove an iron pipe 1 1/2" x 48" flush with the ground & set a 4x6" x 36" post alongside from which a Spruce 36" diam. bears S47°W 235 ft mtd 1/4 S 16 CSBT

a Spruce 30" diam bears N80 1/2°W 308 1/2 ft mtd 1/4 S 16 CSBT.

7-19-40

NW Cor Addison Gibbs DLC #37

Set from 1/4 Cor. tie as recorded in original government field notes.

34

Set a cedar post 4x4x36" & drove an iron pipe alongside.

A spruce 18" bears S42 1/2°W 52 1/2 ft mtd DLC 37 CSBT
" 8" " N70°W 30 1/2 ft " "

7-19-40

T 21 S R 12 W

Sec Cor 9-10-15-16

Location identified from an old fir
stake ~~7x7~~ and Bearing Trees.

Set a post 7x7x50" for corner
from which

a Fir 36" diam. bears $55\frac{1}{2}^{\circ}W$ 87 ft (slope) This tree had
been previously marked but was not an original
mkt. T 21 S R 12 W S 16 CS BT

Fir 40" diam bears $55^{\circ}E$ 105 ft slope mkt T 21 S R 12 W S

" 50" " " $N46^{\circ}W$ 60 ft " " T 21 S R 12 W S 16

CS BT This tree had been previously mkt.

Fir 60" diam bears $N32^{\circ}E$ 19 ft. This is an
original BT and was remarked.

7-18-40.

Meander Corner. bet Secs 15-16 - Right bank
Umpqua River.

Location identified from two bearing
trees apparently marked about 35 to 40 years
ago - a 72" Spruce $583^{\circ}E$ 6.8 ft mkt S 15 M.P.

a 54" Spruce Snag $N20^{\circ}W$ 100.7 ft S 16 M.P.

Set a cedar Post 4x4x48" for corner and
drove a 1"x48" iron pipe along side.

a Spruce 24" diam bears $N46^{\circ}W$ 65 ft mkt
T 21 S R 12 W S 16 M.P. CS BT.

T 23 S R 4 W.

1/4 Cor 6-7

37 Location identified from old BT 5 E 106.
good condition & scribe mks plain. Stump
of DBT N(59°)E 50 lbs. scribe mks visible.
Corner Rock set by Thiel 1899 gone &
Fence Post set in place.

Set a stone 2 1/2 x 12 x 24" long 12" in ground
for corner in a mound of rock 30" diam x
18" high fr. from which a ? tree.
bears N 63° E 40 lbs mkt 1/4 S 6 E 5 BT.

Feb. 9 1940

T 23 S R 7 W.

Sec. Cor 7-8-17-18

38 Location identified from snag of
Original BT. chopped out scribe marks
legible -

Set a 4x4x48' Fir Post for corner.
from which a

Fir 15" diam bears N 42° E 13'-ft.

Fir 12" diam " N 75° W 26'-ft.

Fir 8" " " S 40 1/2° W 41'-ft. (slope)

Fir 14" " " S 15° E 21'-ft. (slope)

T 23 S R 5 W.

Standard $\frac{1}{4}$ Sec. Cor. on North boundary
Sec. 1.

39 Location identified from both original
bearing trees. a 28" Black Oak $S 46\frac{1}{2}^{\circ} E$ 100 lbs.
which I chopped out and found original
scribe marks legible and a 54" Black Oak
 $S (36)^{\circ} W. (55)^{\circ}$.

Drove an iron bar $\frac{3}{8}^{\circ} \times 1\frac{1}{2}^{\circ} \times 48^{\circ} - 44^{\circ}$
in the ground for corner from which
a Black Oak 24" diam bears $S 40^{\circ} E$ 83 ft. mhd $4516 SBT$
Black Oak 10" " " $S 39^{\circ} W$ 69 ft " " "
August 1940

T 22 S R 4-5 W.

$\frac{1}{4}$ Sec. Cor between Secs 31-36

Location identified from one original
BT.

40 Set a stone $8 \times 8 \times 2^{\circ}$ above ground mhd
 $X 145$ on top. from which a

Fir 50" bears $S 24^{\circ} W$ 36 ft mhd $4536 CS BT$

Fir 44" " $N 45^{\circ} E$ 96 ft. $4531 CS BT$

August 1940

T 22 S R 5 W.

✓

1/4 Sec. Cor on S bdry Sec 35.

41

Location identified from original BT
N7°W 70 lks. down and badly rotted but
part of scribe mks. visible. Oak stump.
N51°E 79 lks. other BT. ~~no mks~~ all marks
obliterated.

Drove a 1/2" x 42" Iron Pipe 40" in ground
for corner from which an
Oak 6" diam bears N64°E 31° ft mkd '4531 CSBT
Fir 8" " " N87°W 27° " " " "

Sept. 20 1940

T 23 S R 5 W

N.E. Cor. Lindzey Applegate DLC # 42

42

Location identified from original BT.
S3 1/2°W 96.4 ft. Rotted out but scribe mks
still visible - Original corner rock lying
along side field fence. An oak S50°E 55 3/4 ft.
bearing scribe marks dead & fallen reputedly
marked by O F Thiel about 30 years ago.

Reset original stone 6x8x18" - 12" under
ground and drove a 1" pipe alongside
from which an Oak 28" diam. bears S50°E
88° ft.

9-17-1940

T 30 S R 3 W. ✓

Sec. Cor 27-28-33-34.

43
All bearing trees have been destroyed. a stump checks S W. for a possible BT. Mr W. T. Wright states that a rock ~~mark~~ marked was along side a Yew Wood gate post for many years after he acquired the property around this corner. The location checks with distances to road and river as recorded. In accordance with this evidence drove a truck axle 1 1/4" diam flush with the ground for corner. No trees convenient so scribed Yew Wood gate post alongside corner. " Cor 27-28-33-34 C.S.

Oct 9, 1940

Renewed Government Corners ✓

T30SR4W

1/4 Cor. 23-24

Location identified from an Original BT
an Oak 48" dia N73°E 67 lks - Chopped out, scribe
marks barely legible.

44 Drove an iron pipe 1" x 48" - 2" underground and
set a rock 6" x 8" x 15", mkd 145, alongside top flush
with the ground.

A laurel 24" diam bears N36°W 35⁷ ft. mkd "4523CSBT
An oak 12" diam bears N36°E 54⁴ ft - "4524CSBT

Oct. 8 - 1940

Witness to 1/4 Cor 15-16.

45 Set a stone 18x12x5 mkd W.E. 14 on top.

Set from Original BT in excellent shape.

Sec. Cor. 15-16-21-22

Location identified from an original BT.
an oak snag. N10°W 35° scribe mks visible

46 Drove an iron pipe for corner from which

a W. Oak 14 bears N 34° 50' W ~~317~~³²⁷ ft, T30SR4W S16CSBT

Fir 42 " N35° 50' E 218⁵ ft " 525 "

Fir 28 " 567³ 1/4 E 139⁶ " 522 "

W Oak 16 " 576⁰ 1/2 W 317¹ " 521 "

T 265 R 3W ✓

SEL. Cor. 2-3-10-11

Corner intact except mound of stone displaced and B.T. NE quadrant rotted down.

Replaced mound of stone around corner and set a new B.T. NE quadrant

a 10" Black Oak N53°E 24.0 ft. mkd

T 265 R 3W 52 CS BT.

47

T30SR2W

Sec. Cor 27-28-33-34.

Location identified from original BTs.
a Fir 24" diam, S20°E 25 lks, scribe marks
partly legible -

Set a Rock 8" x 8" x 20", 16" in ground, marked
"X" on top - 1 notch on South, 3 notches on West
5 notches on North & 3 notches on E corners.
from which a

| | | | | | |
|--------------|-------|--------|--------|----------------|-------|
| Fir 30" diam | bears | S53°W | 47' ft | mk. T30SR2W533 | CS BT |
| " 36 " | " | S33 E | 42' | " " " | 534 " |
| " 20 " | " | N43½ E | 29' | " " " | 527 " |
| " 30 " | " | N37°W | 20' | " " " | 528 " |

9-26-40

Sec. Cor 23-24-25-26

Location identified from original Bearing
Trees. a 72" Pine N33°W 50 lks, a 24" Fir (down) S74°E
16 lks - a Fir 24" (down) N4°E 75 lks. all bearing scribe
marks partly legible.

Set Rock 8" x 8" x 18" - 12" in ground, in mound
of stone, mkd "X" on top - 1 notch East - 2 notches
South - 5 notches West and 4 notches on North. from which
a Sugar Pine 8" diam. bears S80°W 45' ft. mk. T30SR2W526CSBT

| | | | | | |
|--------------|-------|--------|---------|-----|-------|
| Fir 30" diam | bears | N4°E | 74' ft | " " | 524 " |
| Fir 6 " | " | S34½ E | 42.8 ft | " " | 525 " |
| Pine 72 " | " | N38°W | 33' ft | " " | 523 " |

9-26-40

Recorded
to here

✓

T30SR2W.

1/4 Sec. Cor 23-24

All signs of this corner has been obliterated
an location falls in a wash - Established new
corner midway between Sec. Cors. 13-14-23-24
and 23-24-25-26.

50

Set a stone 8" x 8" x 22" mkd X on top and 1/4 S
on South face 26" in the ground with a
stone 6" x 8" x 24" similarly marked on top
and surrounded by a mound of stone.
6" x 6" x 72" cedar post alongside. mld 1/4 S CS
523 - 524 - from which an

Oak 8" diam. bears N 15 1/2° W 87 1/2 ft mld 1/4 S 23 CS BT
a Cedar 18" " " S 24 1/2° E 94 1/2 " " 1/4 S 24 "

9-26-40

1/4 Sec. Cor. So. bdry. Sec 30.

Rock in a mound of stone - Original
bearing trees 6" Alder N 70 1/2° W 24 lbs. mks visible
but not legible - 10" Dogwood N 77° E 35 lbs dead
but scribe mks. clear. Marked new BTr.

51

10" Hemlock N 33° W 29 1/2 ft. mld 1/4 S 30 CS BT
10" Fir N 62° E 41° " " "

9-24-40

Note - 1/4 Cor. N bdry Sec 31

as described govt field notes and
in good condition

52

9-24-40

✓

T30SR2W.

Sec. Cor 22-23-26-27

53 Location identified from original bearing trees 24" fir 528°E 44 1/2 - chopped out - scribe marks partially legible - 60" pine down and burned. checks original bearing & distance.

Drove 1 1/2" x 1 1/2" x 60" angle iron 50" in ground for corner and surrounded with a mound of stone. from which.

a fir 20" diam bears 560°W 19 1/2 mhd T30SR2W 527CSBT
" 8" " " 527°E 53 1/2 " " 526 "
" 22 " " N 12°W 37 1/2 " " 522 "
" 24 " " N 15°E 38 1/2 " " 523 "
9 - - 40.

1/4 Cor 22-27.

Location identified from one original BT scribed 1/4 S.

54 Drove 1" x 36" iron pipe 30" in ground with 2" x 4" oak stake alongside for corner.

a Cedar 26" diam bears 525°W 13 1/2 ft mhd 1/4 S 27 CSBT

Fir 6" " " North. 57 " " 1/4 S 22 "

Aug 2, 1940

1/4 Cor 22-23 Location identified one original BT down & rotten but scribe marks still legible

Set a Stone 4" x 7" x 16" mhd x 1/4 for corner

55 a fir 16" diam bears N 39°E 47.3 ft mhd 1/4 S 23 CSBT

fir 16" " " 531°W 39 ft " 1/4 S 22 CSBT

C. S. File No. 16/55

8-5-40

T30SR2W

Sec. Cor 13-24 T30SR2W 18-19 T30SR1W.

Location identified from original BTs.
24" Fir N56 1/4 E 31 1/2 partially visible and
12" Fir S74 1/2 W chopped out BT which is very
plain.

54

Set a Stone 6"x8"x18" for corner from which
a Fir 20" diam bears S53 3/4 E 14.8 ft mkt T30SR1W519
Fir 24" diam bears N56 1/4 E 20.0 ft mkt T30SR1W518CSBT
Orig. BT Fir 18" " " S74 1/2 W 19 1/2 " T30SR2W524CSBT
Fir 24 " " " N62 1/2 W 48 1/2 ft " T30SR2W513CSBT

1/4 Sec Cor 13-24

Original corner obliterated.

Set a Rock 6x9x20" mkt x 1/4 for corner
with cedar post 6x6x48" along side midway
between Cor 13-24 T30SR2W 18-19 T30SR1W and
13-14-23-24 T30 SR2W from which a
Fir 20" diam bears N40 W 67 ft mkt "4513CSBT
Fir 36 " " " S10 E 41 ft " "4524CSBT

57

Sec Cor 13-14-23-24

Location Identified from One Original BT
which is down but scribe mts legible and 2 others
which check for bearing and distance but marks
obliterated. Set Cedar Post in field for corner from
which an Oak 16" diam bears N55 1/2 W 100.0 ft mkt T30SR2W514CSBT
Oak 14" " " " N2 E 46.6 ft " T30SR2W513CSBT
Fir 24" " " " S74 W 118.4 ft " T30SR2W523CSBT
No tree near SE -

58

T 235 25W ✓

See Cor 25-26-35-36

Location identified from part of original BT and stump holes of remainder all of which check original field notes.

59

Set Stone $3 \times 14 \times 18$ " for corner from which
an Oak 10" diam bears $N61^{\circ}W$ 66.5 ft

Fir 12" " " $N63\frac{1}{2}^{\circ}E$ 617 ft.

Laurel 14" " " $S56^{\circ}E$ 60.0 "

Fir 28 " " $S46\frac{1}{2}^{\circ}W$ 107² "

8-22-40

1/4 Cor 34-35

Location identified from testimony of Albert Cokeram who saw scribe mks on fir $N26^{\circ}E$ 102 lbs - This tree is down and butt section burned. A stake in fence line check for location and agrees with property lines.

60

Drove a $3/4 \times 56$ " iron pipe 48" in ground for corner from which

a Fir 30" diam bear $S87\frac{1}{2}^{\circ}W$ 120 ft

a Fir 12" " " $S71^{\circ}E$ 59.0 ft.

Cor
on Range
line

18-19 - T. 21-11

13-24 - T 21-12

2" x 5' Pipe

7" Fir - S. ~~70~~³/₄ E - 7.4 ft

12" " - S. 12¹/₂ W - 8.3 "

Set 8" " - N. 49¹/₂ W - 18.2 "

10" " - N. 44 E - 21.8 "

T 30 S R 2 W

FD. ROCK WITH "X"

23 | 24
26 | 25

62 & NOTCHES AS CALLED FOR IN
RENEWED NOTES BY B.B.I., IN
1940.

ALL B.T.S IN GOOD CONDITION
& AS CALLED FOR IN NOTES
EXCEPT 8" TREE S 80° W 45.7 FT.
IS FIR INSTEAD OF SUGAR PINE.

FD. ANGLE IRON IN ROCK
MOUND AS CALLED FOR IN
RENEWED NOTES BY B.B.I. IN 1940.

22 | 23
27 | 26

63 ALL B.T.S IN GOOD CONDITION
& AS CALLED FOR IN NOTES
EXCEPT:

22" FIR IS N 4° W INSTEAD OF
N 12° W 24.4 FT.

& 24" FIR IS N 20° ~~E~~ INSTEAD OF
N 15° E 25.1 FT

July 6, 1959

MILLO GOOFREY
(Signature)

✓ C. S. File No.

16/55

64

T 30 S R 2 W

$\frac{1}{4}$ S $\frac{22}{27}$

FD 1" PIPE & SCRIBED OAK

STAKE IN GOOD CONDITION

FD. 27" CEDAR SHOWING
SCRIBE MKS. S 25° W 14.3 FT.
(TO CENTER)

FD 12" FIR (SCRIBED)
N 4° E 6 FT. (TO CENTER)

FILED
RECEIVED

JUL 23 1953

COUNTY SURVEYOR
DOUGLAS COUNTY, ORE.

SURVEYING
MAPPING
CRUISING
PLATTING

HAROLD T. LEWIS
REGISTERED PROFESSIONAL ENGINEER
REEDSPORT, OREGON

STRUCTURAL
DOCKS
ROADS
BRIDGES

TOWNSHIP 22S RANGE 9W

CORNER FOR SECTIONS 15 - 16 - 21 - 22

At the corner of Sections 15 - 16 - 21 - 22 T22S R9W WM,
I found the SW witness tree in good shape and evidences of the NW
and NE trees, but no evidence of the corner post. I therefor set
a fir post 4' long and 4" diameter, 18" in ground, from which

A fir, 10" diameter marked T 22 S R 9 W Sect. 22 BT 722 bears
S 84 E, 11'

A fir, 16" diameter marked T 22 S R 9 W Sect. 15 BT 722, bears
N 45 E, 9'

A fir, 13" Diameter Marked T 22 S R 9 W Sect. 16 BT 722, bears
N 40 W, 54'

Sept. 28, 1939

CORNER FOR SECTIONS 16 - 17 - 20 - 21

At the corner of Sections 16 - 17 - 20 - 21 T 22 S R 9 Wm WM,
I found the SW witness tree in place also faint marks on the rotten
bark of the 60" fir, described in the Government notes, but no evidence
of the corner post. I there fore set a fir post 4' long and 4" in
diameter, 18" in the ground, from which

A maple, 14" diameter marked T22S R9W Sect. 16 BT 722, bears
N 31 E, 33'

A fir, 30" diameter marked T 22 S R 9 W Sect. 17 BT 722, bears
N 14 W, 30'

A hemlock 8" diameter marked T 22 S R 9 W Sect. 21 BT 722, bears
S 50 E, 7'

Sept. 29, 1939

C. S. File No. 1155

SURVEYING
MAPPING
CRUISING
PLATTING

HAROLD T. LEWIS
REGISTERED PROFESSIONAL ENGINEER
REEDSPORT, OREGON

STRUCTURAL
DOCKS
ROADS
BRIDGES

RE-ESTABLISHMENT OF CORNERS

Township 21 S R 9 W

Township 22 S R 9 W

At the corner of Secs 35 & 36 T21 S R9W WM, and Secs 1 & 2, T 22 S R 9 W, I found all witness trees in place, but the hemlocks, which are the trees for Secs 35 & 36 have been killed by fire. I therefore set a hemlock post 4' long 4" diameter 18" in ground, from which

A hemlock 9" diameter marked T 21 S R 9 W Sec 35 BT 722 bears N 47 30" W, 34'

A fir, 36" diameter marked T 21 S R 9 W Sec 36 BT 722 bears N 60 E, 65'

Oct. 18, 1939

Rec.

SURVEYING
MAPPING
CRUISING
PLATTING

HAROLD T. LEWIS
REGISTERED PROFESSIONAL ENGINEER
REEDSPORT, OREGON

STRUCTURAL
DOCKS
ROADS
BRIDGES

Re-ESTABLISHMENT OF CORNERS -

CORNER BETWEEN SECS 36 T 20 S R 10 W and Sec 31 T 20 S R 9 W WM

At this corner I found the original pipe set for this corner on
the cap of which was marked as follows:

T 20 S
R 10 W R 9 W
S 36 S 31
T 21 S

This pipe had been upset by a falling tree, but as the NW witness
tree was in place, I reset the pipe, from which

An cedar, 8" diameter marked T 20 S R 9 W S31 BT 722 bears
N 65 E, 17' Nov. 10, 1939

C. S. File No. 16/55

SURVEYING
MAPPING
CRUISING
PLATTING

HAROLD T. LEWIS
REGISTERED PROFESSIONAL ENGINEER
REEDSPORT, OREGON

STRUCTURAL
DOCKS
ROADS
BRIDGES

RE-ESTABLISHMENT OF CORNERS -

TOWNSHIP 23 SOUTH RANGE 9 WEST WM

At the corner of 16 & 15 T23S R9W WM, I found both witness trees as described in the field notes, but the NW tree was dead; I therefore set a fir post 4' long 4" diameter 18" in the ground, as there were no available trees to the NW, I marked a 12" hemlock, which bears S 69 W, 20', marked T23S R9W Sec 20 BT 722 Dec. 27, 1939

TOWNSHIP 23 SOUTH RANGE 9 WEST WM

At the corner of Secs 20 & 28 T23S R9W WM, I found the NW witness trees in place and alive; I also the SW tree but it was a small rotten snag; I therefore set a 4' cedar post 4" diameter 18" in ground, marked S28 on the SE face and S20 on the NW face, from which

A cedar, 6" diameter marked T23S R9W S20 BT 722, bears N48W, 27' Dec. 28, 1939

69 Rec

20

Rec

16/55

SURVEYING
MAPPING
CRUISING
PLATTING

HAROLD T. LEWIS
REGISTERED PROFESSIONAL ENGINEER
REEDSPORT, OREGON

STRUCTURAL
DOCKS
ROADS
BRIDGES

RE-ESTABLISHMENT OF CORNERS -

TOWNSHIP 21 SOUTH RANGE 11 WEST WM

$\frac{1}{4}$ Corner bet. Secs 27 & 28

1- Rec
I found the witness corner to the $\frac{1}{4}$ corner between Secs 27 & 28. I could not find the stone as described in the government field notes, but found two dead witness trees in place; I therefore set cedar post 4' long 4" diameter, 18" in ground marked $\frac{1}{4}$ S WC, from which

A fir 16" diameter marked $\frac{1}{4}$ S WC BT 722 bears S 79 E, 23'

A fir 12" diameter marked $\frac{1}{4}$ S WC BT 722 bears S 9 W, 5'

April 18, 1939

$\frac{1}{4}$ CORNER BETWEEN SECS 34 & 35 -

2- Rec
At the $\frac{1}{4}$ corner between Secs 34 & 35, I found the scribe on the original alder bearing tree had been rotted out, but in the soft muck where the post was supposed to set I found the well preserved point of an old wooden stake, also, running N from this point is a well blazed line, whose topography checks for a considerable distance with the government field notes. I therefore set an $1\frac{1}{2}$ " galvanized pipe, 4' long from which

A forked spruce 28" diameter marked $\frac{1}{4}$ S T21S R11W S35 BT 722 bears S 10 E, 5'

A spruce 36" diameter marked $\frac{1}{4}$ S T21S R11W S34 BT 722 bears S 75 W, 24'

May 9, 1939

a
Government Corners Re-established.

Corner to sections 21, 22, 27 & 28

T²¹ S. R. 5 W,

73
Recorded
Re-established this corner from the stump of the N, W, & S. W. bearing trees. Old marks found on stump of N. W. tree, S. W. badly decayed. Other trees destroyed. set a cedar post properly marked, drove a galvanized iron pipe 1/2 inch by 36 inches long alongside. from which I marked

A fir 15" in diam. bears S. 81° W. 12.2 feet marked E. 21 S. R. 5 W. sec. 28 C. S.

A fir 15" in diam. bears N. 63° W. 11.8 feet marked T 21 S. R. 5 W. sec. 27 C. S.

A fir 24" in diam. bears S. 24° E. 42.2 feet marked T. 21 S. R. 5 W. sec. 22 C. S.

A fir 8 in diam. bears N. 79° E. 25.1 feet marked T. 21 S. R. 5 W. sec. 21 C. S.

Witness

Dr. Beng. DeVore
Byron DeVore

C. S. File No. 16/55

sd Phil

Gov. Corners Re-established.

Corner to sections 7, 8, 17 & 18. Tp. 22 S. R. 4 W.

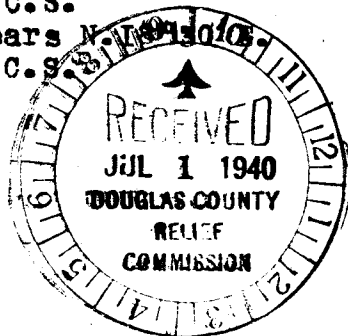
74
Original bearing trees destroyed. By a former survey I found marks on the S.W. bearing tree leg lying on the ground from which I set a post and marked a fir 8" in diam. which bears N. 23° E. 9 links distant and marked T. 22 S. R. 4 W. S. 8 B. T. A fir 30" in diam. which bears S. 66° E. 41 links and marked T. 22 S. R. 4 W. S. 17 B. T. At this point I set a cedar post 3 inches square and 36 inches long properly marked. I remarked the above trees and adding C.S. to both trees also marked a fir 12" in diam. which bears N. 43° W. 65 links dist. and marked T. 22 S. R. 4 W. S. 7 B. T. C.S. A fir 14" in diam. which bears S. 5° W. 19 links dist. and marked T. 22 S. R. 4 W. S. 18 B. T. C.S.

Witness to the above
Clarence Anlauf
Robert Anlauf.

75
7
Recorded
1/4 section corner on the line between sections 28 and 29 Tp. 21 S. R. 5 W.

Original bearing trees dead. N.W. bearing tree standing and marks found. other tree destroyed. I set a cedar post properly marked. and drove a gal. pipe 3/4" x 30" long 24" in the ground alongside the post and marked
A cedar 20 inches in diam. bears N. 73° W. 35.3 feet marked 1/4 S. B. T. C.S.
A fir 24 inches in diam. bears N. 73° W. 19.1 feet Marked 1/4 S. B. T. C.S.

Witness to the above
Byron DeVore
Arthur Weeley.



By O. F. Thiel Surveyor.

C. S. File No. 16/55

Government corners re-established.

Corner to sections I, 2, II & 12

Tp. 23 S. R. 4 W.

I established this corner from the S.E. and S.W. bearing trees both dead, cut in S.W. tree and found old marks N.E. & N.W. trees gone.

74
Set a stone 24 x 16 x 12" in mound of stone 12 inches in ground marked with x and S.S. from which I marked

A Fir 10 inches in diam. bears N. 63° E. 30.7 feet marked T. 23 S. R. 4 W. section I C.S.

Recorded
A Fir 30" in ^{ches} diam. bears N. 80° W. 9.6 feet marked T. 23 S. R. 4 W. sec. 2 C.S.

A Fir 20 inches in diam. ^{bears} S. 51° W. 42 feet marked T. 23 S. R. 4 W. sec. II C.S.

A Fir 28 inches in diam. bears S. 66° E. 15.8 feet marked T. 23 S. R. 4 W. sec. 12 C.S.

Witness

Floyd Dargett
R. Nelson.

EPP

on Apr. 8-41 Fear
" J. Wolford
A. Boyer

Re-Set following corner
Cor fee. 19-20-29-30
T. 22 S. R. 4 W

Re Set from all 3 old B.T.'s
all in + O.K. except one in
fee. 20

above 1" x 36" Iron Pipe +
Rock from which I
marked a 8" Fir N. 69° E.
(Note Boyer left out distance)
I remarked all of the
3 old Fir trees.

Set December 12 1939

BS,

Jno Wroe
Henry Wroe } witnesses

Harvey:-

I have not handed in the notes for the $\frac{1}{4}$ Cor. of Sec's 17 + 20 - T.20 S; R 10 W.

It is shown below.

Set $\frac{3}{4}$ " pipe for corner on true line + midway between the section corners $\frac{1}{2}$ mi to the East + West. From which a 36" Fir, on left bank N Fork brs N $83\frac{1}{2}^{\circ}$ E 261.5 ft, Bark Blaze + scribed $\frac{1}{4}$ S 17, T20 S, CS BT and a 24" Alder brs S 32° W 100.5 ft, scribed $\frac{1}{4}$ S 20, T20 S R 10 W. CS.B.T.

Note: There is a $\frac{3}{4}$ " pipe set also at a point that looks like the orig cor. From which the stump of a 12" \pm maple brs N 70° E 16 ft and the snag (4' high) of a 50" \pm maple brs S 40° W 10 ft - In 1874 Byars ran the W² of the line bet 17 + 20 + set the $\frac{1}{4}$ Cor bet 17 + 20 without running the full mile - abt 4 yrs later Thiel continued running $\frac{1}{2}$ mi E from Byars corner - This corner (above) looks like the cor. The 50" maple shows the round for the blaze but was burned out inside the blaze from this cor the

abt 54' n. of the other corner

36" Fir brs S 81° E 175 ft and the } These are the
24" Alder " S 46° W 198 ft } B.T.s shown above

Harvey

Cor Renewed

Cor to Secs 13, 14, 23, 24 - T 28 S R 8 W

All Bearing Trees down - Stumps OK

Renewed from Stump of 20" Oak to NW (N17°W 54) ^{Links}

and " " 30" " to SW (S47W 96)

and " Hole 20" " " S.E. (S82E 45)

New Trees

10" Fir N1°W 4.0 ft. - ^{Marked} S 14 T 28 S R 8 W CSBT

15" " N85°E 17.0 " S 13

18" " S72½E 8.0 " S 24

8" " S30°W 22.5" S 23

Oct 7 1939

Witnesses

Fred Kiehn

Elmer Bushnell

AB.

Recorded

TRANSIT SHEETS

T29S R.8W W.M.

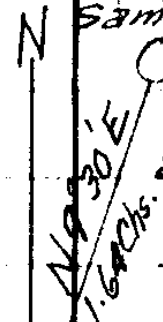
Sept. 14, 1939

Var 21°

Found 36" Fir scribed on bark.
Same Original 18" Fir scribed

July 1910.

Blazed and scribed C.S. BT.
at base of same tree



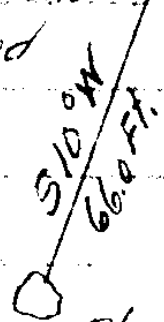
1/4 Cor. found

Set 3/4" x 30" Iron rod 9-14-39

West

East

Found 12" Oak S 40° W 1.37 Chs.
Oak was rotted down, Found
old blaze pieces, but
no scribe marks



Blazed and scribed new 16" Fir

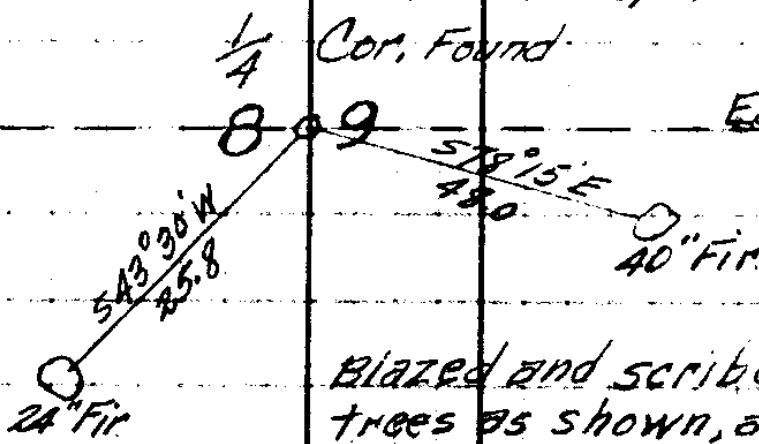
81

Found Orig. 12" x 10" Firs and marks
12" Fir N 78° E - 17 Lks. is stump in poor
condition. 12" Fir S 32° W. 13 Lks.
had been cut open. Tree in fair condition

1/4 Cor. Found

W

East thru center
of sec. 9.



Blazed and scribed two new
trees as shown, and set 3/4" x 30"
Iron rod from orig. trees.

C. S. File No. 16/55

TRANSIT SHEETS

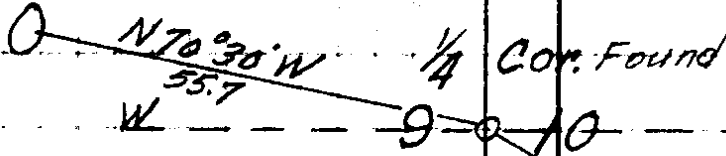
T 29 S R 8 W. W. M

82

DEC. 29, 1939

Var. 21°

30" Hemlock



Found original Firs; 50" Fir
 N 1/2° W in good condition.
 20" Fir N 1/2° E down, but in good
 condition.

S 46° E
 37.6

48" Fir
 scribed on
 Bark

\$

Blazed and scribed two new trees as shown,
 and set 3/4" x 30" Iron rod from original trees.
 Cor. sets near bottom of steep North hillside.

C. S. File No. 16/55

83

Meander Cor. Bet. Secs 33-34

Set from one Old B.T.

N. $77\frac{1}{2}^{\circ}$ E. 98³ ft.

Set Oak Post 4x4x48"

Marked M.C. - C.S. - 33-34

New tree 14" Tripple W. Oak

Scribed M.C. - C.S. - B.T.

N. $43\frac{1}{2}$ E. 290 Ft.

N.E. Richardson

Harvey Eppstein

Nov. 13-1940