

27.55 ✓
30

327.55
30
50

407.55

27.55
157

177.55 to N Line Lot 29
30
207.55

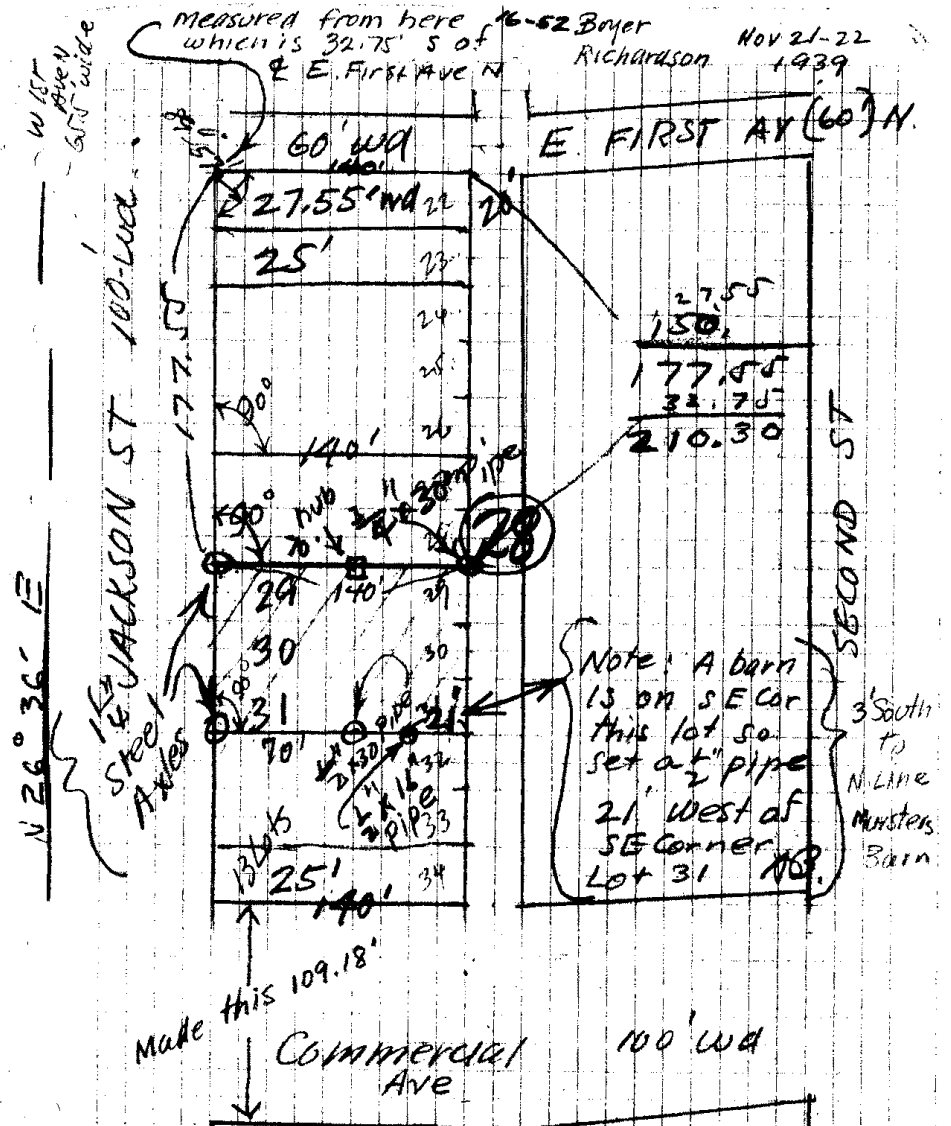
414.85
Chained

2 | 109.18
54.59

2165.5
32.75
54.59

87.34 = two sts

414.85
87.34
327.51



SURVEY FOR
 Lots 29-30-31 - Kimmey's Improved Plat.
 Shoemaker, B. R.

Note Dist bet E Comm. Ave, North on E Jackson St, to E. First Ave. is 414.85' P c.s. 16/52