



Lot 2

NW<sup>4</sup> NE<sup>4</sup> Sec. 29

DIVERSION  
550' N & 570' E. of  
Int. Cor. DLC 37

Pipe Line  
N47°E 50'  
N45°E 132'  
Creek

N33°E 150'  
Alder

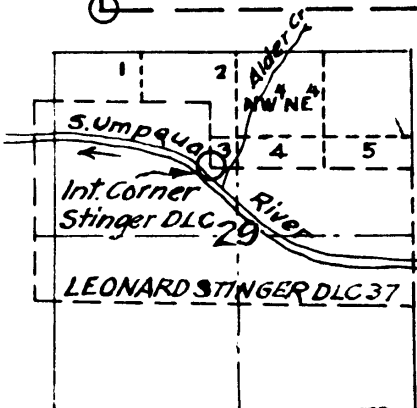
Lot 3

Lot 4, Sec 29

N17°45'E 75'  
COUNTY ROAD  
S51°E 200'

494'E } of Int. Cor  
95'N } D.L.C. 37  
House

Interior Cor. Leonard Stinger  
D.L.C. 37, T30S; R3W; W.M.



FRED BIGHAM APPLICATION FOR  
DOMESTIC WATER PERMIT, OUT OF  
ALDER CR; TRIBTRY S. UMPQUA RIV;  
IN SEC. 29, T30S; R.3W; W.M; DOUGLAS CO.  
Oct 1939 - Scale, 1" = 100ft. - A. Boyer Reg Engr.



Enwa Stinger & Co  
C. B. O. 8402 23 LKS

South

7. chs = Rock at R Bank  
of River 1.5' N. of true ca.  
in River

---

85.29  
29.80

5.49

66

3294

3294

362.34

66

23

198

132

15.18

66

7

462

75

3

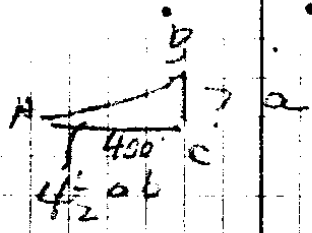
725

A=1

.25  
.01

.05  
2  
10

400'  
 $S = 4\frac{1}{2}$

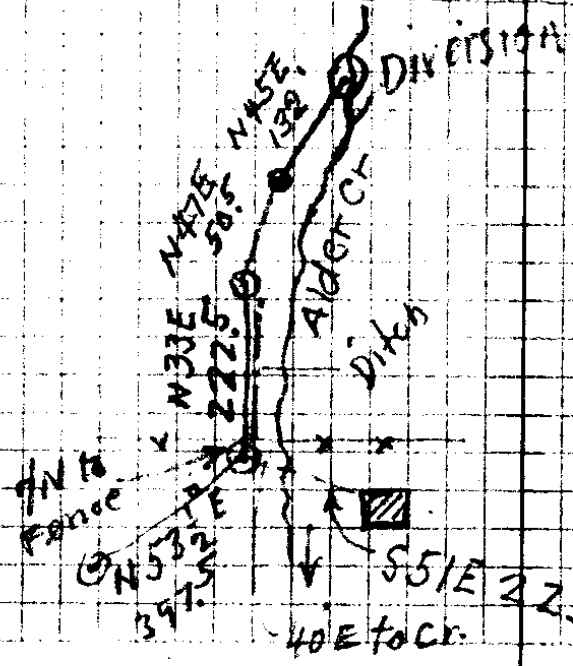
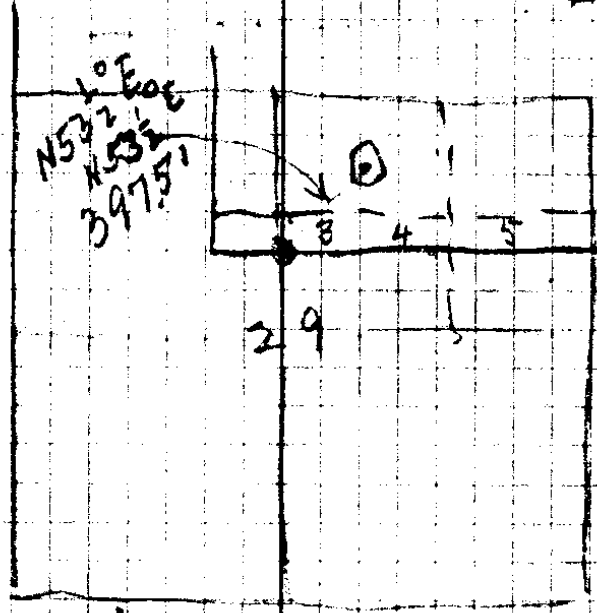


$\tan A = \frac{a}{b}$   
 $a = \tan A \times b$

107  
 140  
 -----  
 2800

Domestic use  
 c. o. e. f. s.

100 L 3"  
 200 L 2"  
 Rest  $\frac{3}{4}$ " } 25' fall



211 9  
 50 9  
 132  
 -----  
 405

Fred Bigham  
 Days Cr.

9 = opp Cor (W) <sup>16-47</sup>

429

8

200' Across River

7. on L Bank R.

online

69.6 F

online

2354 F

5  $\Delta 90^\circ L$  177.4 2<sup>0</sup>15'

4  $\Delta = 90^\circ R$  E 20'

2402 3<sup>0</sup>15'

3

276.0 Flat

2

263.1 20<sup>0</sup>45'

1

N

775 F

DLC Line

56.5 F

W

242.2 20<sup>0</sup> = 2274

1/4 Cor.

16/47

Fred Bigham  
 Jack Higgins  
 Jno Ferguson

2422  
 933

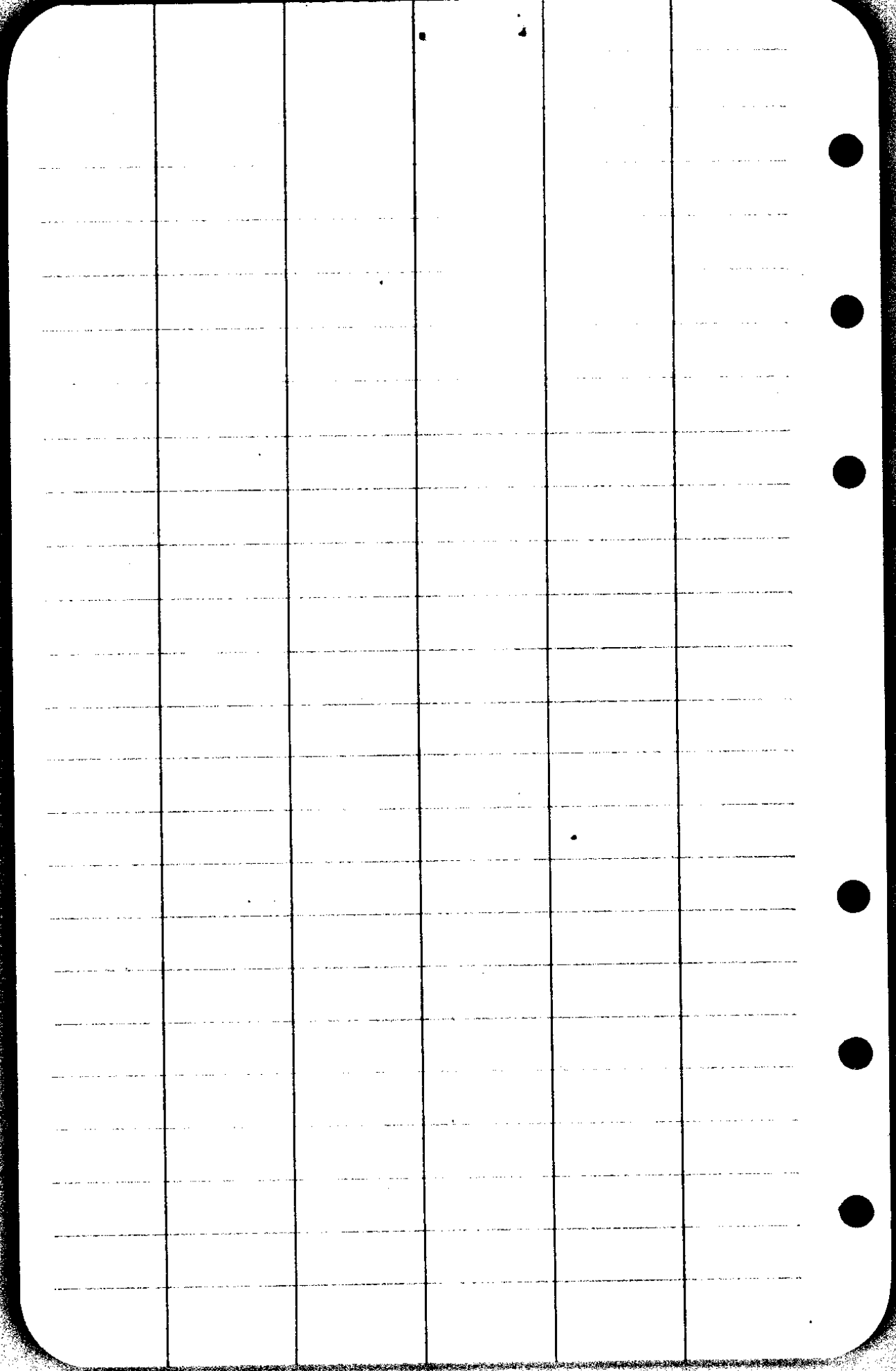
8  
 (8)

21798  
 7266

21798  
 227,4258

227,4  
 56.5  
 283.9

3623  
 2839  
 784



CS FILE FOLDER

CONTAINS

MORE

INFORMATION