

Bonanza Q. Silver Mines Inc.

Line of levels run on

0.4% grade +

stakes set

Feb - 1940

T25S/R4W

V 16

E 42

# Bonanza Q.S. Mines Inc.

Station	Adit #11	Top	1" φ Bar at pt. abt 26' S. Tunnel #11 Portal
0+0	849	108.49	100.00
Top Tie 0+0 = Top R.R. Tie			8.40 100.09 = Top Tie
2+22			7.52 100.97
4+22			6.72 101.77
①			6.45 102.04 5.74
5+74	5.74	107.78	
6+22			5.21 102.57 ✓
7+22			<del>5.17</del> 102.97 4.81 4.0
①			4.77 103.01 ✓
②	7.25	110.26	
8+22			6.89 103.37 4.0
9+22			6.49 103.77 4.4
①			4.24 106.02 5.15
②	5.15	111.17 <del>108.87</del>	
10+32			6.96 104.21
①			4.95 106.22 3.20
3+26	3.26	109.48	
10+32			5.26 104.22 Check
11+37			4.85 104.63 4.0
②	29.89		2.73 106.75 6.21
6+21	6.21	112.96	112.96
12+17			8.01 104.95 4.8
12+77			7.77 105.49 ✓
36.1	36.1		

Feb. 6<sup>th</sup> 1940

Don - Axe

N/10<sup>th</sup> W 113

NE Richardson Hb. Rod 6.45 2984 300  
4.77 2314 28

AB - K R chain 424 2314 2.22  
4.95 6.75 4

273 8.88  
23.14 8.40  
777 .84

30.91 2+22 7.52 188  
3610

55.19 Rev 7.52 188  
49 7.52  
6.77

17 101.77

140 .8  
102.57

107.7 56  
103.1 103.13

42

722 2 100.09 6.22  
04 2.88

2888 102.97 2488  
102.01

102.61 .36  
100.09

2.52 100.09  
2.29  
102.97

9+22 922  
1.10

10+32 3688  
100.04

103.77 110.26

11.37 106.02  
.4 4.24

4.548 106.02  
100.09 5.15

10463 111.17  
100

1217 7.17  
104.95

100.09 19

102.97  
4

103.37  
110.26

689

112.96  
104.63

8.53

100.09  
2.29  
102.97

11.37  
6.40

7.17

100.09  
2.29  
102.97

104.63  
7.17

104.95

C. S. File No. 16/42

	TS	H1	-S	Elev
		112.96		
①	5.85	112.81	6.00	106.95 ✓
12+77			7.6	105.2
13+85			7.18	105.63 ✓
14+45			6.94	105.87
②	3.28	111.48	4.61	108.20
14+45			5.6	105.9
14+75 = 1/16 Line			5.46	106.02
15+35			5.28	106.26 ✓
③	1.48	111.25	1.71	109.77
15+35			4.8	106.4 (for one (12))
16+10			4.5	106.50
16+10 BM			5.33	105.92 ✓
ack on E face stake				

10.61

6.00  
4.67  
1.71  
5.33  

---

17.65  
10.61  

---

7.04  
112.06  

---

105.92

153.5  
4  

---

6.140  
100.09  
100.23

108  
4  

---

432  

---

105.24  
105.63  

---

105.87

106.02  
8.4  

---

114.42

75  
3.3

1660  
4  

---

6.440  
100.09  

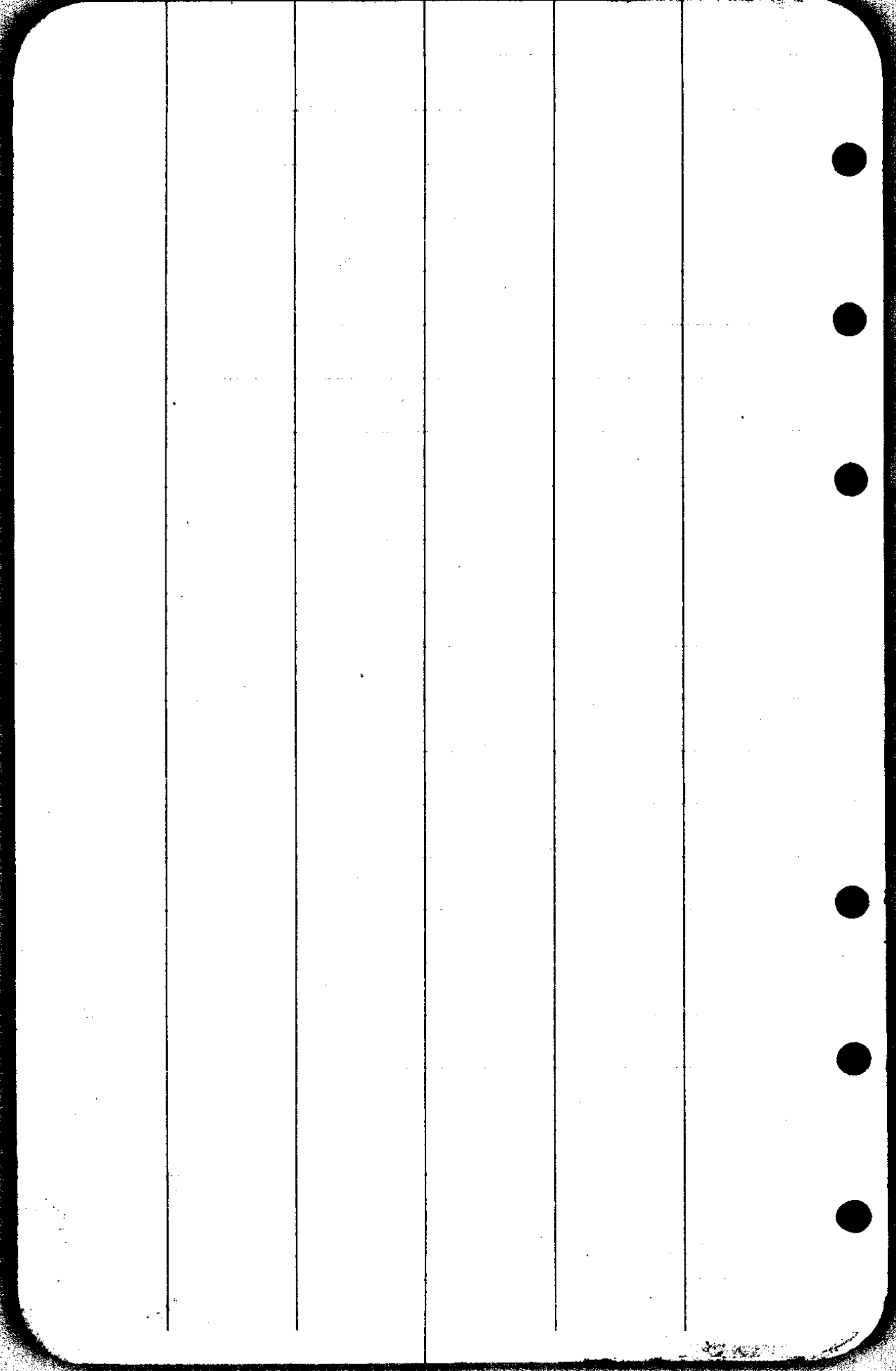
---

106.53  
100.09  

---

106.27

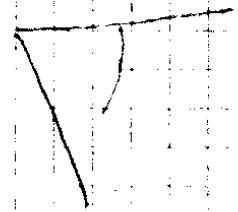
C.S. File No. 16/42



3000  
203/4  
9.5.4

35  
 16  
 41-46  
 S 1921E  
 N88° E  
 5-35  
 93-35  
 180 60  
 86-25  
 67-04  
 153-29  
 180 60  
 S 26-34  
 N88° E

N



#4  
 " 14775"  
 S 19°-30' E @ 14+43.7  
 S 19°-48' E

C. S. File No. 16/42

Traverse-Tunnel #1 N + East  
 13+835 Root of Tree N Face on 0.4% Grade.

	N 26 1/2° E 107.5	N 26° 23' E
12+76	Δ 8° 31' R	
	N 18° E 60.0	N 17° 52' E
12+16	Δ 5° 08' L	
	N 23° E 80.0	N 23° E
11+36	Δ 33° 19' R	
	N 10° W 104.0	N 10° 19' W
10+32	Δ 2° 14' R	
	N 12 1/2° W 110.0	N 12° 38' W
9+22	Δ 1° 55' L	
	N 2 1/2° E 100.0	N 2° 17' E
8+22	Δ 15° 21' L	
	N 18° E 100.0	N 17° 44' E
7+22	Δ 13° 19' L	
	N 3 1/2° E 100.0	N 3° 03' E
6+22	Δ 18° 12' L	
	N 49° E 200	N 49° 15' E
4+22	Δ 26° 15' L	
	N 75° E 200	N 75° 30' E
2+22	Δ 18° 52' L	
	S 86° E 222'	S 85° 38' E

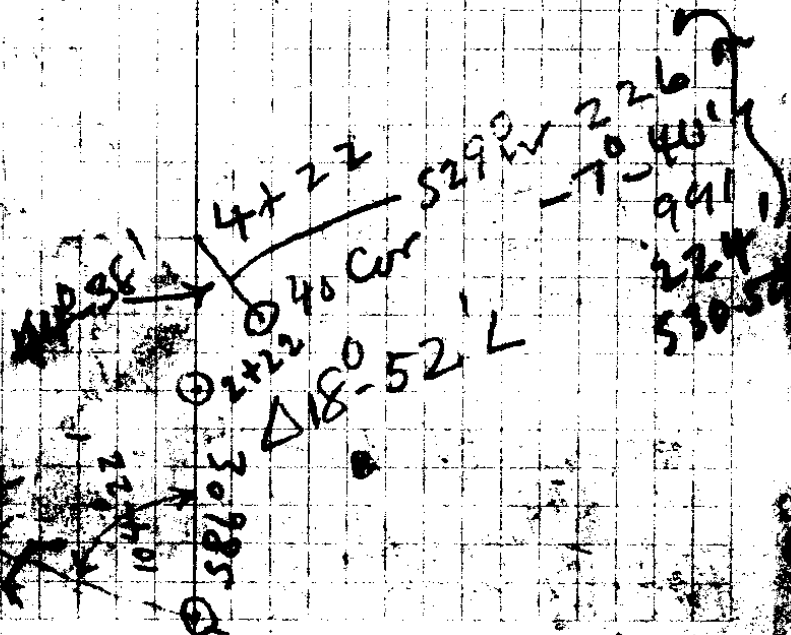
0+0 = 1" Φ steel bar abt 20' S of  
 mouth (Portal) Tunnel # 11

Feb 6 + 7

T 255  
- 25' R 4W

+20°

\*10+32  
on line  
of levels  
3.8 . 10+32



C.S. File No. 16/42

16+58 = Cen Creek.

West 50' = Creek end = slope = 15° for 50'

12+58 = Cen Creek

N 88°-15' W 75.0

N 88°-15' W

15+33.1 Δ 32° 24' L

N 55° 30' W 59.5'

N 55°-51' W

14+73.6 on cleared R/W

E+W Δ 36° 03' L

N 19° 30' W 30.4

N 19°-48' W

14+43.2 Δ 24° 18' L

N 5° E 59.7

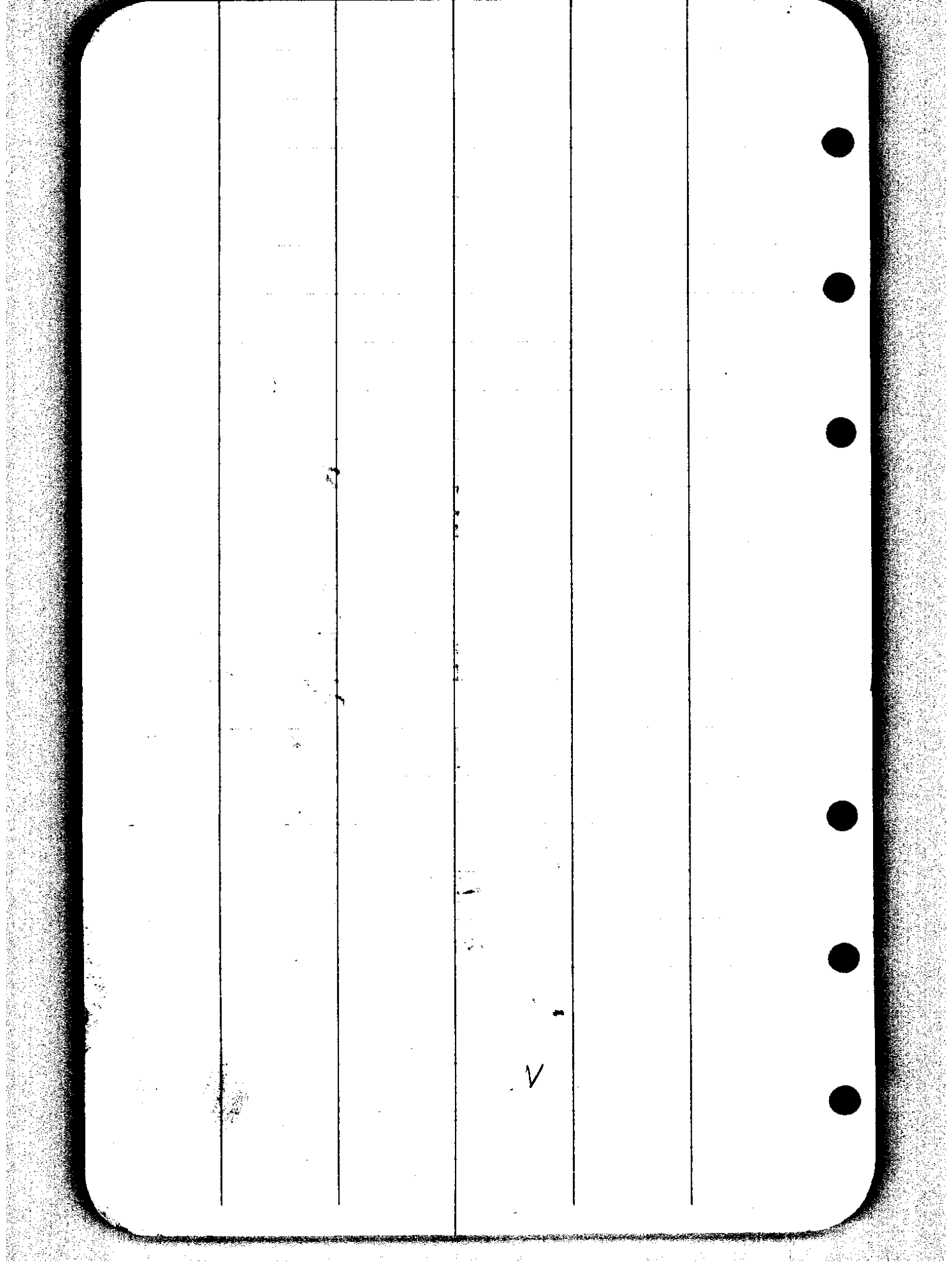
N 4°-30' E

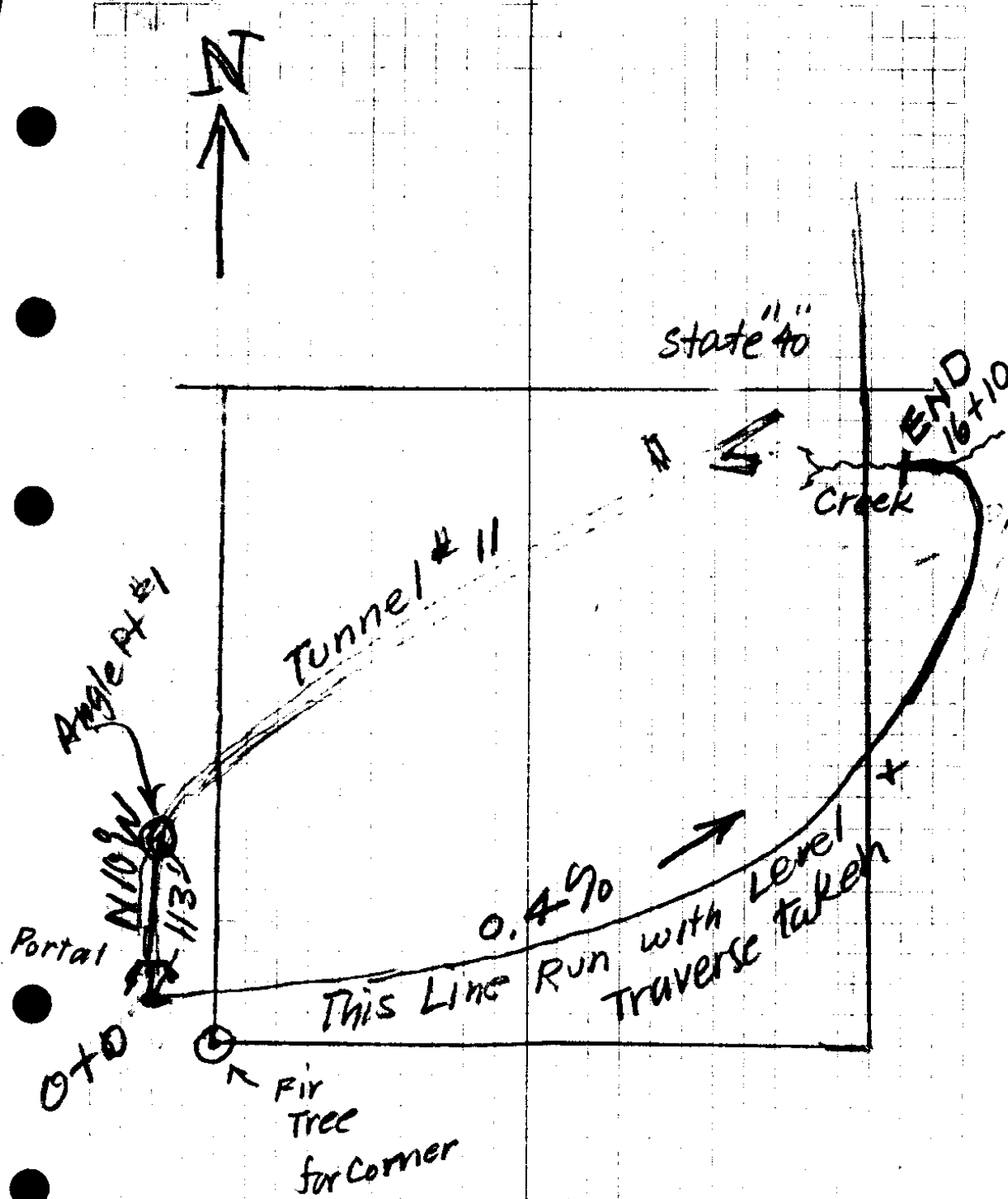
13+83.5 Δ 21° 53' R

59.7

55.100







C. S. File No. 16/42

V16

E42

Don't Boyer

Feb 7-'40

Tie from 40 Cor to Traverse ("14+75")

14+43.2

S19°-30'E

①

4 = Traverse Line "14+75"

S86°-20'E 216.8

② 3 Δ5°-35' R

N88° E 217.8

③

2 Δ85°-16' L

S86°-4' 62.0

Δ9°-30' R

④

S 15 1/2° W 96.4

Pipe

40 Cor = NE Cor NW 4 SW 4

T255

S19°-48'E

Δ67°-04' R

9°-00' N86°-52' W  
987 = 214.0

24°-15' N88°-33' W  
.913 = 198.858

75.0 - 16° N7°-11' E  
.961 = 72.1

12° N16°-41' E  
978 = 94.7

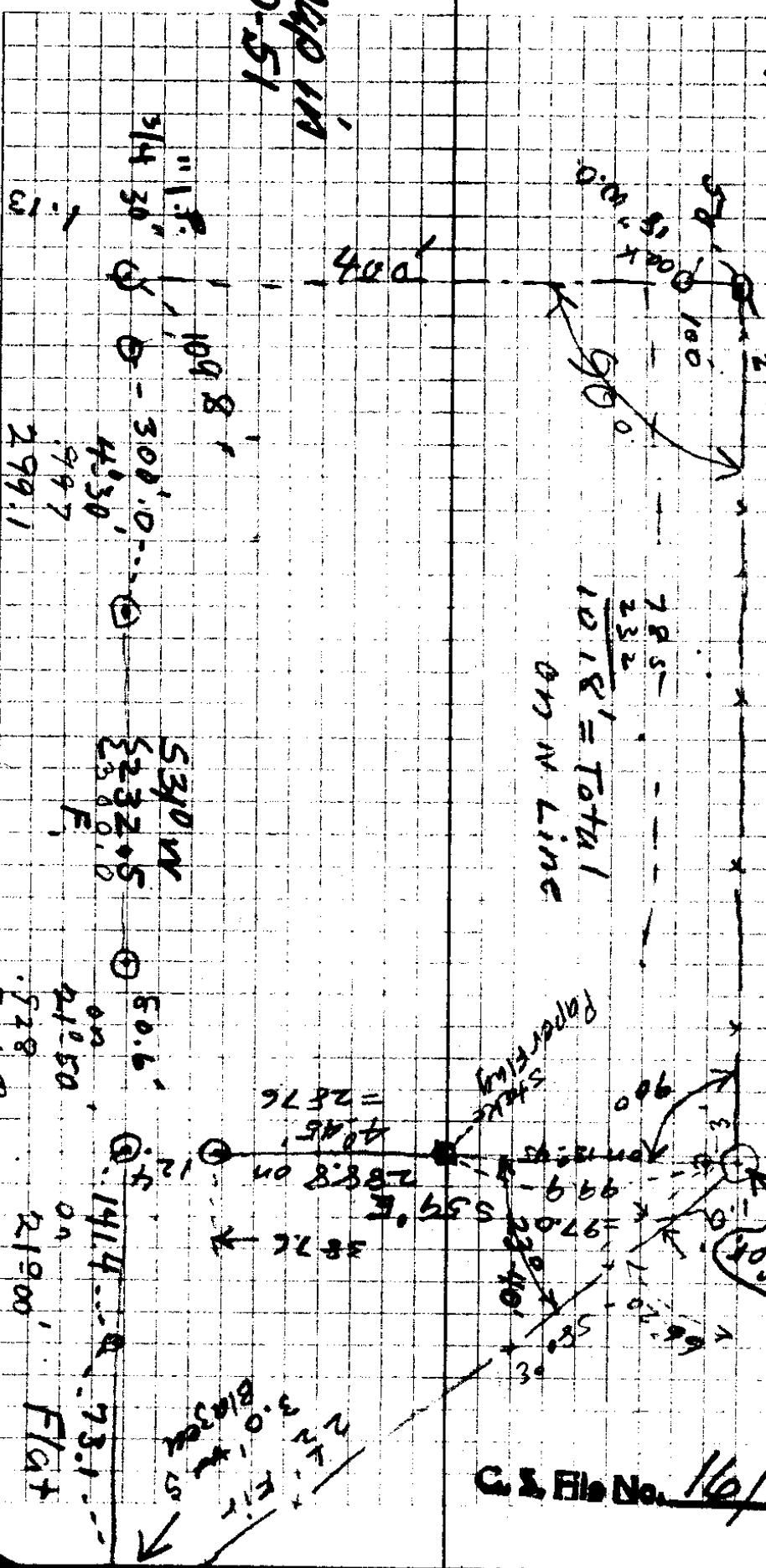
SW 4 R 4 W

Sept 13 1939

A Buyer  
Donald Rone Hatchman

SEC 16  
2574

C. & File No. 16/42



Total 220.17

73.5 = 131.9

Map in  
D-51

78.5  
23.2  
101.8 = Total  
on N Line