

Block 91

Block 90 91

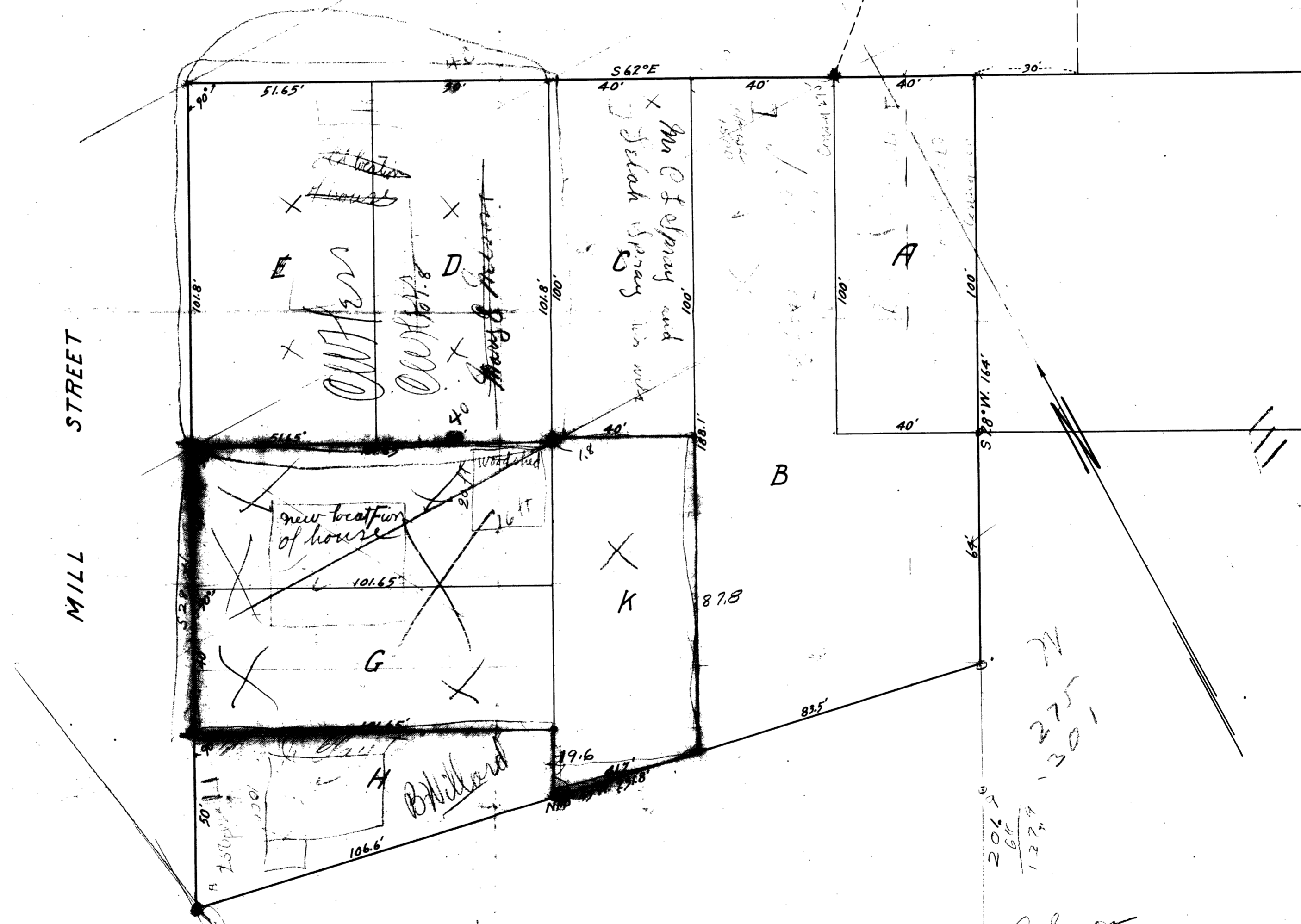
SOUTH STREET

STREET

PINE STREET

MILL STREET

Concrete street improvement
of intersection of Burk
and Pine Streets.



PLATT OF LOTS
 BELONGING TO
 CLARENCE HESS
 ROSEBURG, OREGON
 SCALE 1"=25'

Johnson

1016.5
 520.15
 1214

181.8
 48.18
 231.8

206
 66
 127.3

275
 301

142.3

CS 16/37-1

beg at pt on E Line Mill St. 60' Sthly
from S.W. Cor Bl. 91 - Third S. Add.
th Estly = with S Line Lots 1-16
Bl. 91, 220, th Sthly at L Angles
with said S. Line Bl. 91 275'
to pt 60' N of N. Line A. M. Rose
land th. due W. 150' to E Side
Mill St, th. W., along said E
Line Mill St 1/2' th Nthly to
beg. = $1\frac{1}{3}\pm$

The above is description of
Deed 26/478 as referred to in agree-
ment for deed 98/488 - Coen to Konaputski
which seems to be in error
inasmuch as it seems to cover the
Hess property