

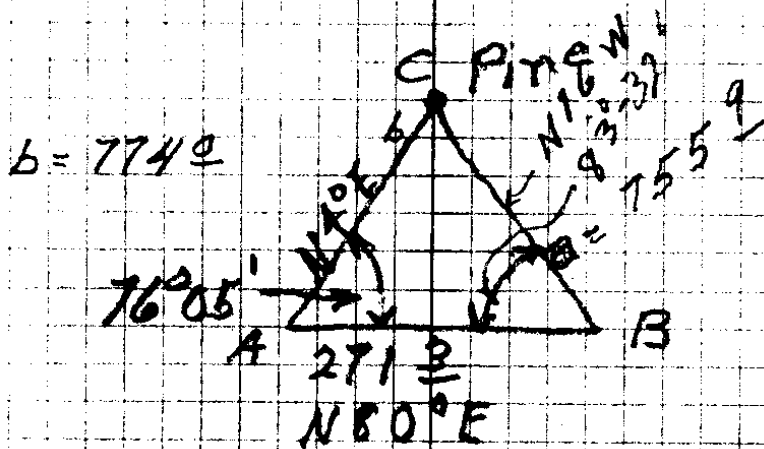
Agnes E. Johns  
Gateway Road  
Sec. 20 T. 32 S. R5 W.

H. L. Eppstein  
N. E. Richardson

Sta	Dist.	L	R	M.C.
2+389	119	L	48°07'	N. 50°E N5-10E
7	200	L	42-16	N53¼E N53-17E
6	551	L	7-32	S. 84½E S84-27E
5	412	L	15°-9'	S. 77°E S76-55E
4	811	L	3°-00'	N88°E N87-56E
3	968	L	6°-28'	N85°E N84-56E
2	343	L	0°-51'	N79°E N78-28E
1	262	L	0°-41'	N79½E N79-19E
Δ B				S/6-28E
Pine	610			N. 30½E
¼ cor				
79-20				

1/4 cor. bet. 19-20  
10" Fir N 62 1/4° E. 26' FT

Rec,



Sta. Dist. L R M.C.

5+05<sup>8</sup>

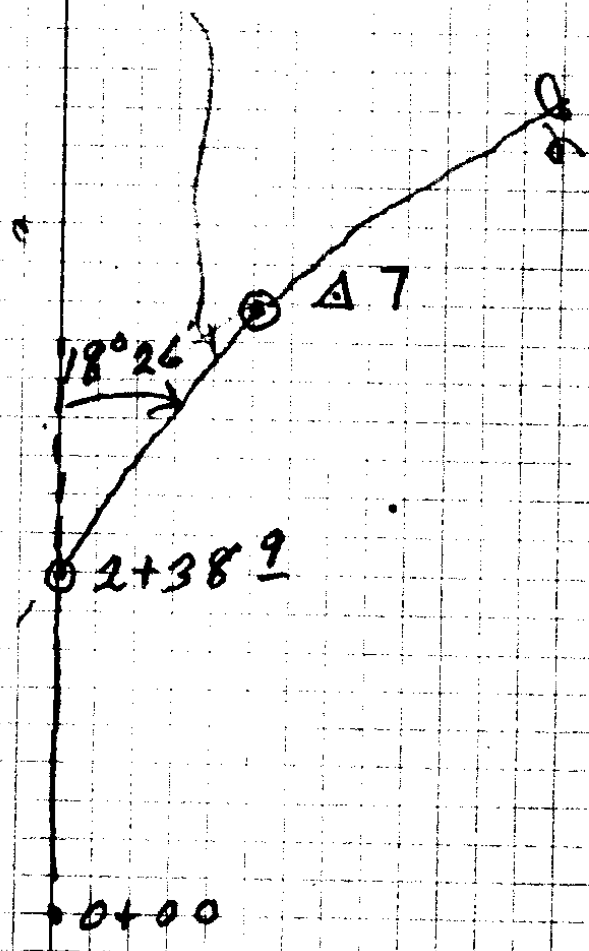
7°37'

S21°E S20-53<sup>E</sup>

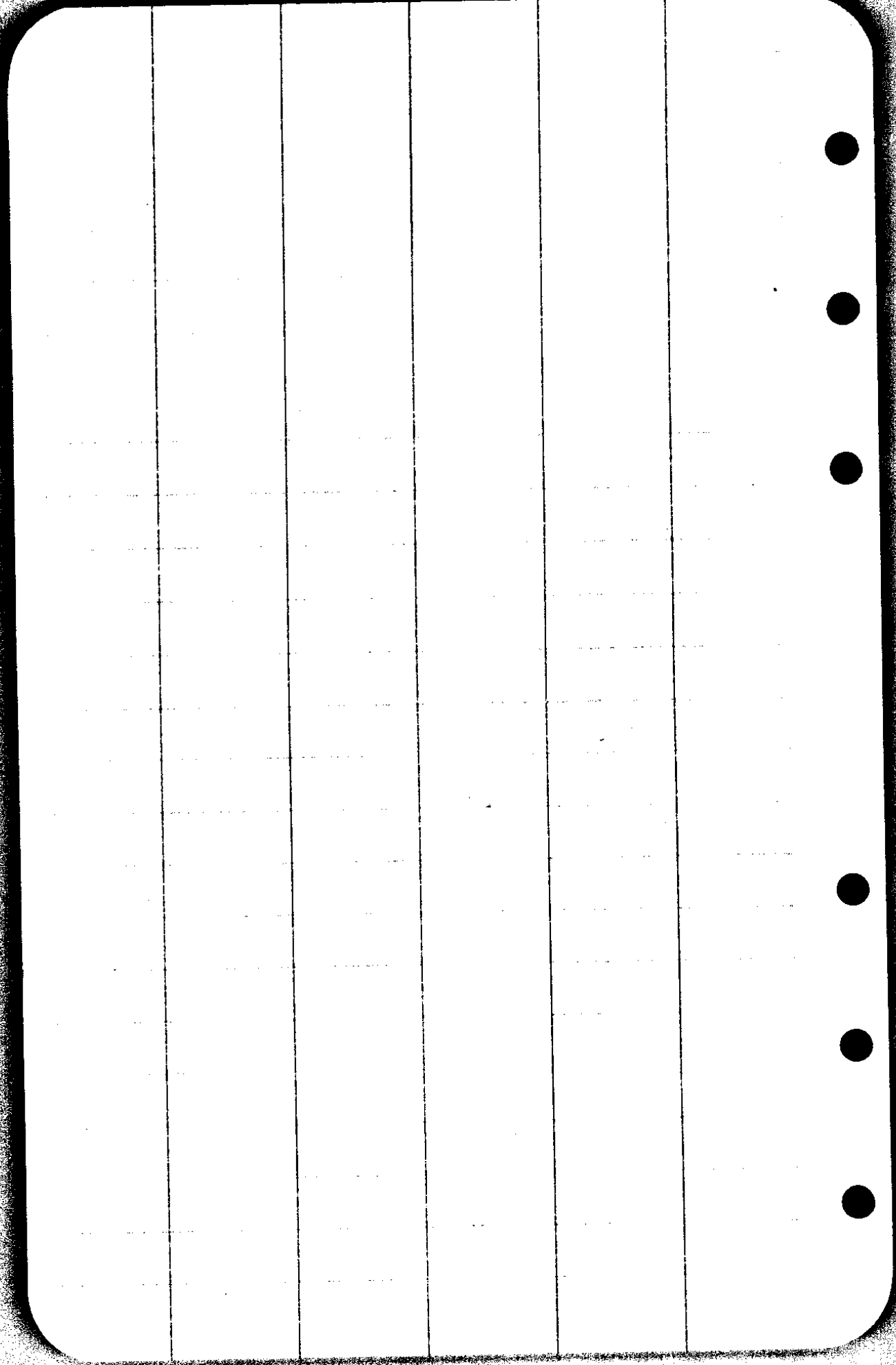
2+38<sup>9</sup>

S13<sup>1/2</sup>E S13-16E

0+00



0+16 - 16" Cedar 8 ft. Right



CS FILE FOLDER

CONTAINS

MORE

INFORMATION