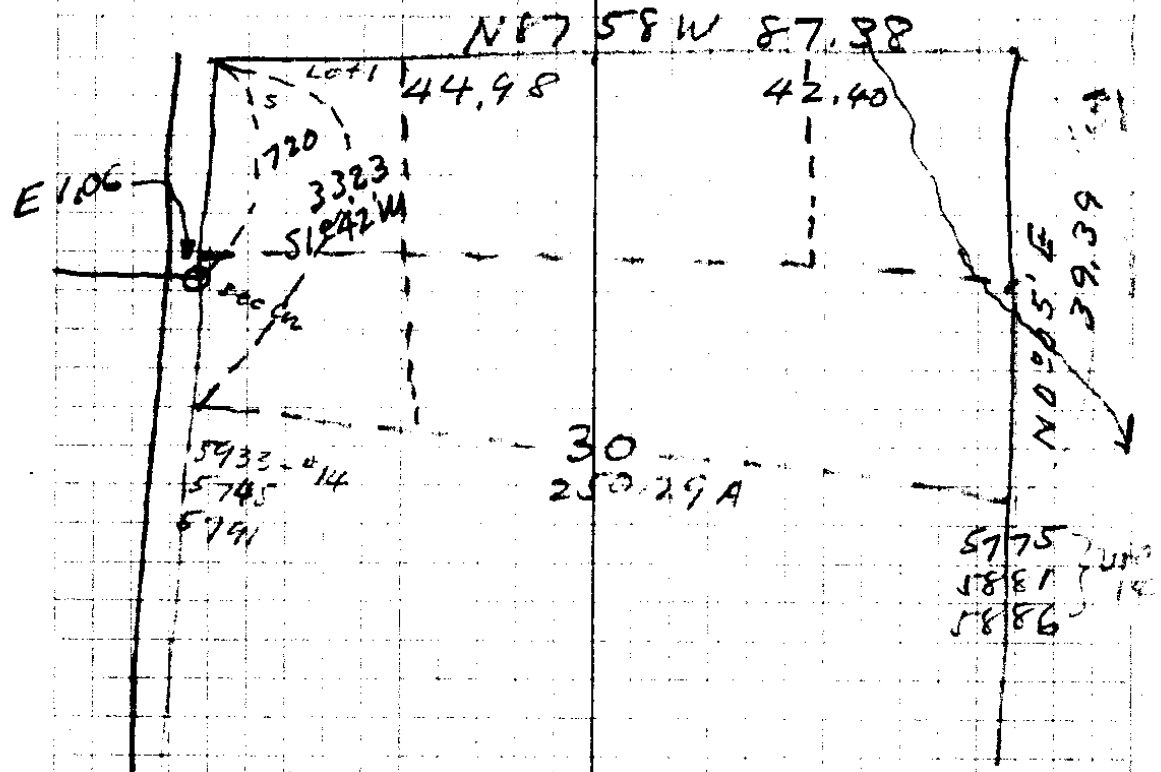


# Pearley Hawn

19 20

28 S R 7W



W 1/4 cor 30

- 24" Fir N 28 E 18 L } near
- 26" " S 44 E 42 L }
- 20" " S 27 E 56 L
- 24" " N 33 W 122 L

Sec cor 14 and 30

- 12" Fir S 61 E 17 L } NW cor 30
- 30" B.O. N 33 E 44 " }

E 1/4 cor 30

- 30" W.O. S 61 E 78 L } fold
- W.O. stump S 42 W 114 L }
- 12" W.O. N 18 E 86 L }
- 10" B.O. West 73 L }

Sec cor 19, 20, 29, 30

- 36" Pine N 41 E 23 L
- 16" B.O. S 26 W 27 L
- 30" " N 23 W 29 L
- 28" " N 10 E 46 L
- 16" Fir S 78 W 11 L
- 315 E 13 L

	11 = 1.0	1928.6	182+2 20.2
		79.5	15 <sup>0.966</sup> -00
	10 1861.8	76.8	17.7+2=19.4
		204.9	23 <sup>0.919</sup> -15
	P.O.T = 1673.5	188.3	17.7 tot
	P.O.T	298.4	16 <sup>0.983</sup> -40
	9 Eat Lunch = 1380.2	293.3	creek? 14.9
		145.3	3 <sup>0.997</sup> -00
		144.8	30 ft from
	1235.4	297.8	23 <sup>0.915</sup> -45
	P.O.T.	272.5	11.8+2=13.5
	8 962.9		9.0+2=11.0
		91.4	18 <sup>0.951</sup> -00
	7 876.0	86.9	
		68.7	F
	6 807.3	68.7	
		161.4	30 <sup>0.858</sup> -50
	5 668.8	138.5	7.5
		209.7	19 <sup>0.945</sup> -00
	4 470.7	198.1	6.3
		127.0	14 <sup>0.979</sup> -45
	3 346.4	124.3	4.4
		81.9	20 <sup>0.938</sup> -15
	2 269.16	76.8	2.5
		90.3	F
	1 = 179.3	90.3	
	585-58E 183.2	179.3	1.7

P.O.T = 17 1/2 Cor = SW Cor Lot 1 = SW cor NW 4 NW 4 Sec 30

25293.5  
00938  
 463480  
 173805  
521415  
 543330.30  
2930  
 5729000

1832  
979  
 16488  
 12824  
16488  
 1773528  
938  
 819  
8442  
 938  
7504  
 768222  
127  
979  
 3

5793.5  
 54.4000.100938  
521415  
 225850  
173805  
 520450  
463480  
 56970

179.3  
00938  
 14344  
 5379  
137  
 1681834

269.6  
00938  
 21568  
 5088  
24264  
 2548848

3464  
938  
 27712  
 10392  
31176  
 3249232

470.7  
938  
 37656  
 14181  
42843  
 4.415166

669.  
00938  
 5352  
 2307  
6021  
 6.27522

807.3  
00938  
 64584  
 24216  
72651  
 7572474

876.0  
938  
 1938  
 7008  
 1628  
7184  
 821688

963  
00938  
 7704  
 2889  
8667  
 903294

1235  
00938  
 9880  
 2705  
1185  
 11.58430

1673  
00938  
 13384  
 5019  
15057  
 15.69274

1350  
938  
 75040  
 2814  
938  
 1294440

18628  
00938  
 14896  
 5586  
16758  
 1746556

1939  
00938  
 15512  
 5817  
17451  
 1818782

24 Fir

N45W 4.6'

0+0 = 1600 16/33

20.5 out in  
↓

20.5  
↑

21	3825.1			358 - 2 = 338
		150.2	.993 6°35'	149.1
20	= 3676	0 Finish	h m	← 345.2 = 325 ck 1504
			.961 16°00'	68.5
19	3607.5			338 - 2 = 318
		244.8	.890 27°15'	227.7
	3379.8	82.8	.839 33°00'	317 - 2 = 29.7
	3310.4	76.5	.874 29°00'	69.4 310 - 2 = 29.0
18	Top Ridge =	3243.6	.971 12°25'	30.4 + 1 = 31.4
		174.5		169.4
17	Top Hill	3074.2		288 + 1 = 29.8
		68.7 Flat		68.7
16	3005.5			28 + 1 = 29.0
		.980		
	299.1	11°20'		293.1
15	2712.4			25.4 + 1 = 26.4
		.888		
	108.6	27°25'		96.4
14	2616.0			24.5 + 1 = 25.5
		.885		
	105.9	27°45'		93.7
		.950		
	2522.3	18°15'		23.6 + 1 = 24.6
				274.5
13	2247.8			21.1 + 1 = 22.1
		.848		
	300.8	32°00'		255.0
12	1992.8			18.7 + 1 = 19.7
		.848		
	585.562	54.2 F		54.2
11	Top hill =	1938.6		

1.0 Nov 14

From E  $\frac{1}{16}$  Sec  
South

From E  $\frac{1}{16}$  Sec N

From #32

283.0  
 .992 148.0 - 7:00  
 .998 300.0 2:30  
 .997 149.8 - 4:35  
 .993 232.4 - 6:35  
 .992 246.0 7:05

= 283.0  
 146.8  
 299.4  
 149.3  
 230.7  
 = 244.0  
34.0  
 1353.2 = S End

From NW  $\frac{1}{16}$  Sec South

.997 213.8 - 4:15  
 930 293.5 21:30  
 .945 119.0 19:00  
 .876 300.0 28:50  
 .919 235.8 - 23:10  
 .993 119.6 6:45  
 48.9

= 213.1  
 272.9  
 = 112.4  
 262.8  
 - LESS 10' = 216.7 - 10' = 215.7  
 = 118.6  
 flat = 48.9

1244.4  
 1353.2  
2597.6  
 2 | 1298.8

39.39  
 46  
23634  
 23634  
2599.74

213.1  
 272.9  
 112.4  
 262.8  
 215.7  
 118.6  
 48.9

1353.2  
 1298.8  
54.4

1244.4  
 1298.8  
2543.2  
 54.4

16 0 0  
 39.3  
 23634  
 worm gear  
 SE Cor  
 Howps  
 claim

16/33

32 N+S Sec Line 5793.5

79.5 Flat 79.5

31 5714.0 53.6

240.6 <sup>.954</sup> 17°20' 229.5

30 5484.5 57.4

131.0 <sup>.972</sup> 13°30' 127.3

29 Fence 50' back 5357.2 = 50.2 - 4 = 462

126.1 <sup>.974</sup> 13°15' 122.8

5234.4 273.0 <sup>.831</sup> 33°45' 226.8 -49.1 -4 = 45.1

28 5007.6 47.0 + 4 = 43.0

97.4 <sup>.897</sup> 26°10' 87.4

27 on top 4920.2 46.1 - 4 = 42.1

258.0 <sup>.906</sup> 25°00' 233.7

26 not on top 4686.5 43.9 - 2 = 41.9

99.7 <sup>.960</sup> 16°15' 95.7

25 on top 4590.8 43.0 - 2 = 41.0

48.6 F 48.6

24 on W. Side Top 4542.2 42.6 - 2 = 40.6

249.0 <sup>.879</sup> 28°30' 218.8

23 4323.4 40.5 - 2 = 38.5

178.7 <sup>.929</sup> 21°45' 166.0

22 4157.4 39.0 - 2 = 37.0

103.2 <sup>.898</sup> 26°05' 92.6

241.7 <sup>.992</sup> 7°00' 239.7

21 = 3825.1

ON LINE ↑

4'S

V ↑

21.0 SOUTH