

16-15

Copco

C. Black

Mar 2-34

AB.
Mike Jr
Bill Coona

221

225
225
225
225

225
225
225
99
68

325
225
225
99
22

225
99
22

58

225

V 16-B 15

12	S 10°-15' E	211.6	S 9°-42' E
11	20°-50' L		
	S 10°-15' W	236.8	4° S 11°-08' W
10	7°-38' R		
	S 3° W	129.2	F S 3°-30' W
9	21°-52' L		
	S 26° W	325.0	F S 25°-22' W
8	30°-18' R		See Line
	S 54° E	120.9	F S 4°-56' E
7	83°-00' R		
	S 88° E	144.6	F S 87°-56' E
6	41°-42' R		
	N 50° E	257.7	F N 50°-24' E
5	8°-46' L		
	N 58 ³ / ₄ ° E	260.0	FLAT N 59-01° E
4	54°-10' L		
	S 66 ¹ / ₂ ° E	225.7	6°-45' S 66°-44' E
3	12°-29' L		
	S 54 ¹ / ₂ ° E	131.0	24 ¹ / ₂ ° S 54°-20' E
2	3°-32' R		
	S 58° E	584.0	13° S 57°-52' E
1	33°-08' R		
	N 89° E	167.5	7°-00' N 89° E
	1514	166.2	97255
Sec Cor	22/23		

N 60° 61' E - Bearing Mag. Bet 4+5
Set up on #4 Sight to #5

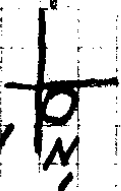


AM

11.04

Hor. L 96° 46' Rt.

Vert L 35° 22'



11:08 AM

Hor 92° 22' Rt

Vert 36° 00'

Lat 43° 15' N

Long 122° 53' W

1/6/15

4 113.9

W 175.0

S 89° 30' E 488.3 N 89° 52' E

4 Burnt Mtn Trail Δ 14° 52' R

N 75¹⁰° E 779.5 N 75° E

3 Δ 0° 03' L

N 75¹⁴° E 425.1 N 75° 03' E

2 Δ 17° 51' R

N 57° E 3340 N 57° 12' E

1 on rd ~~3340~~ 59' R

N 42³/₄° E 69.8 F N 42° 13' E

12

Setup S 9° 42' E

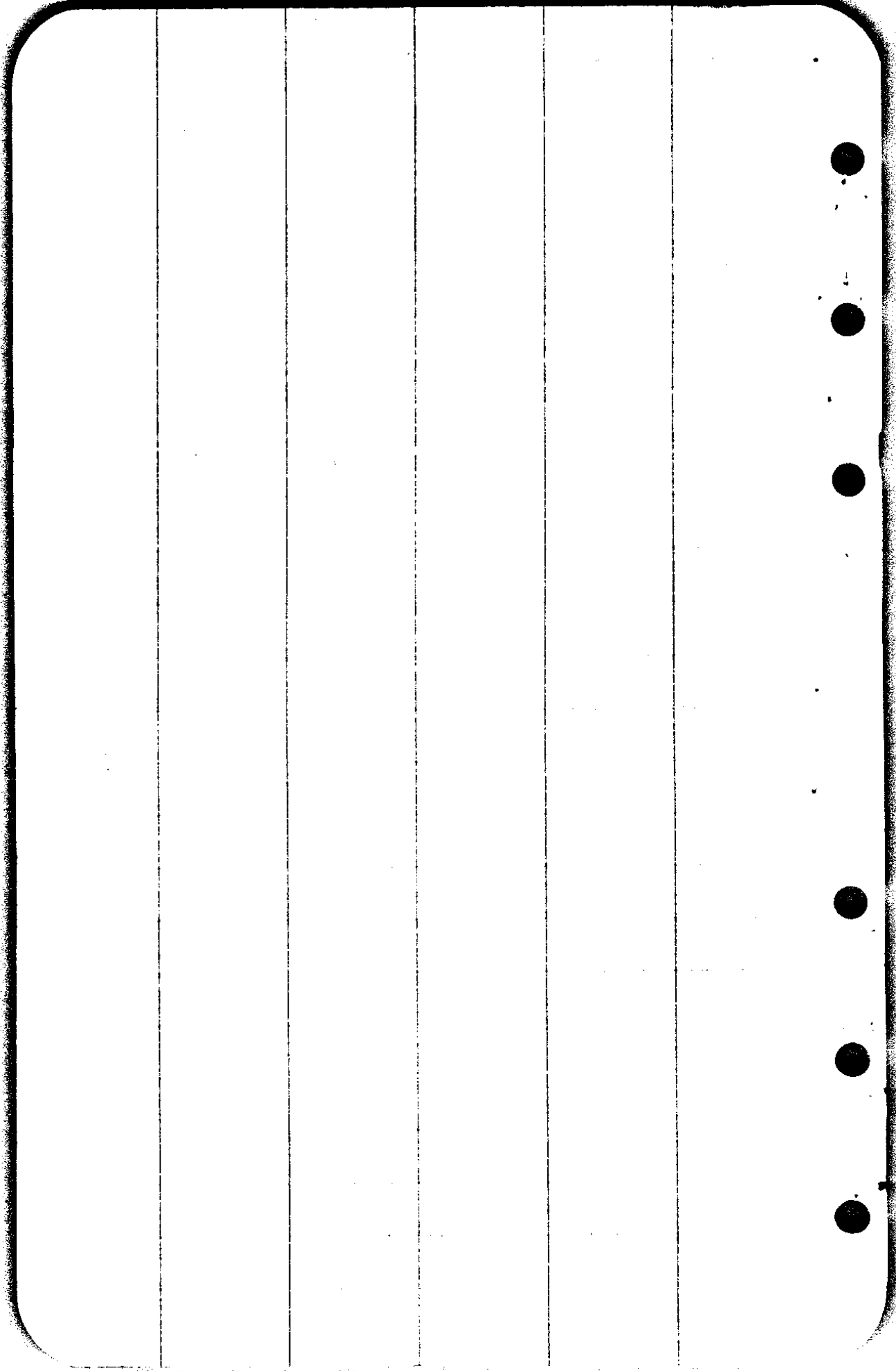
||

13 =
NWCW hrs

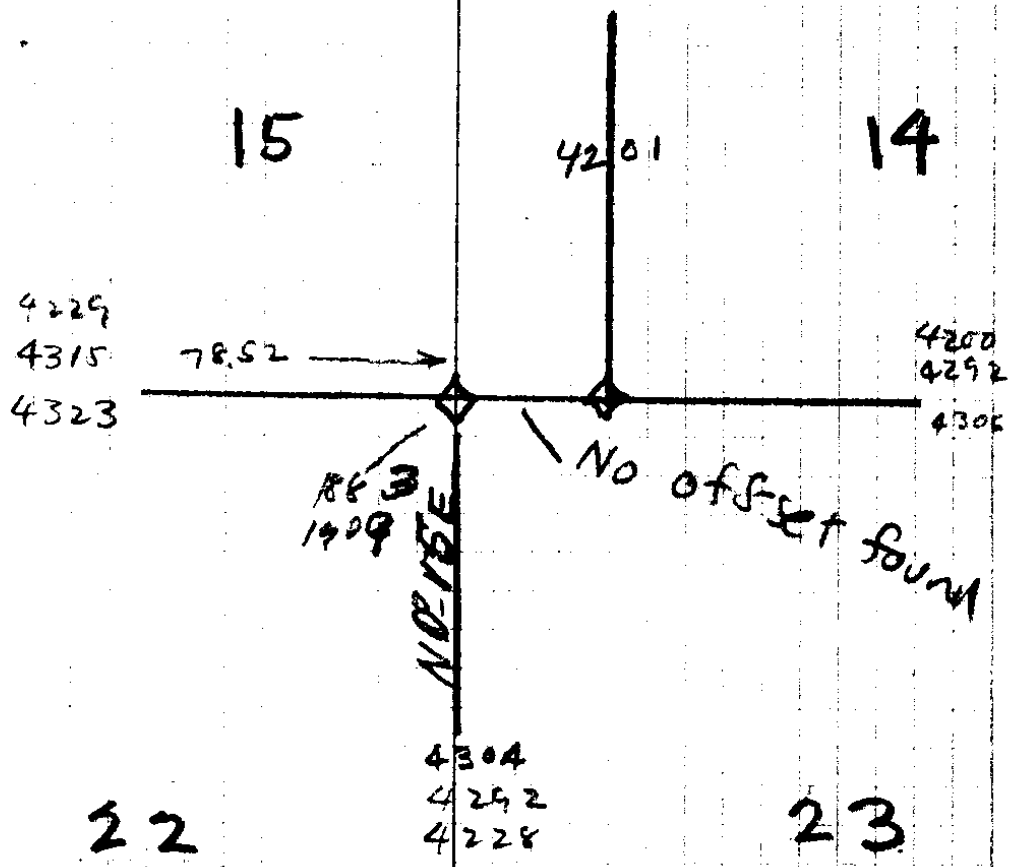
S 29° E, 118.8

S 28° 53' E

12 19° 11' -



T26S
R2W



N bet 22+23

78.2 = Trail NE+SW

f3. = LV riv. bottom ascend

88.79 = Cor. = basalt Stone 14, 15, 22, 23 6x8x6^{1/2} gr.

3W in S + 2 matches in E edge

Re-witness Cor as follows.

- ✓ 12" Fir N 51 $\frac{1}{2}$ ° E 64 L.
- ✓ 24" " S 46° E 87 " = orig B.T. (S 55° E 86 L)
- ✓ 5" Laurel S 33° W 28" 1
- ✓ 18" Fir N 71° W 74"

This cor was also used as the corner for
the rejected revision survey

16/15

1916

1651

3

1000

W 2

17

1

3

27 1/2
2 1/2

16/15

11 N10°W = N9°40'W (check on prev bearing N9°42'W)

12 Δ 34°05' R Prev Survey

N44W 62.6 N43°45'W

H Δ 9°49' L

N33½W 62.0 N33°56'W

G Δ 48°29' R

B Son F

NW (in
Black Hts.

571W 21.8 S70°03'W

G Δ 27°32' L

N81W 184.7 N82°25'W

F Δ 69°44' R

4'E of SE
Cot Harth Cabin

S29°W 36.7 S27°51'W

E Δ 24°10' L

S52°W 131.3 S52°01'W

D Δ 38°26' R

S14°W 107.8 S13°35'W 107.8

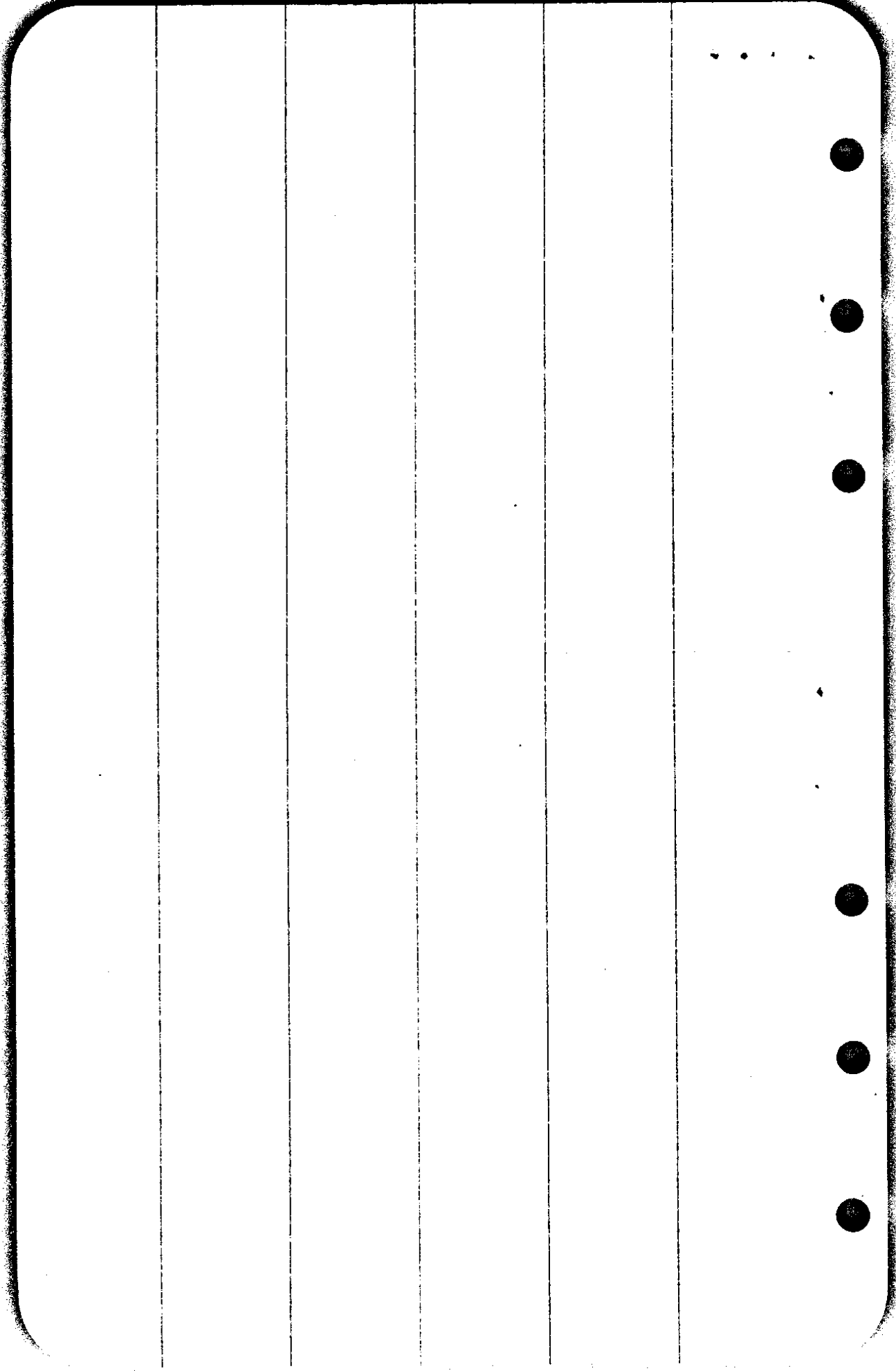
C Δ 13°35' R

S199.8

B (Road 25'S) Blazed Tree 35'S 25'W cedar in (blaze)
& sides

S 145.1

A



CS FILE FOLDER

CONTAINS

MORE

INFORMATION