

Wiley Chamberlin Survey

Jan 10, 1939

A. Boyer

Ted Shellabarger

Wiley Chamberlin

FOR W. LINE NE⁴NE⁴ Sec 4
T22 S R5 W. on N. Side
Pass Creek

6) 10 00 300 (5)

16252

16226

60) 3

300

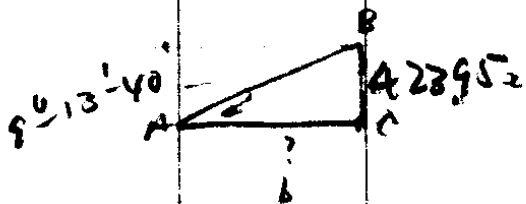
300005

1000-200

16226

0002

.16246



Tan A = $\frac{a}{b}$

b = $\frac{a}{\tan A}$

.16246) 42395 (2609.

32492

99930

97476

155400

146314

91860

423.95 1/4 Corner

9-13-30

9°-14' = #1

18°-27' = #2

27°-41' = #3

= 9°-13'-40"

N 86° W

2609'

2

1304.5'

3) 27°-41' = #3
9-13-40'

20
10
10

Sec corner

9546 (6)	9764 (1)	9632 (7)	9832 (3)	9931 (4)
156.7	164.2	151.7	202.8	245.2 (7)
66822	19568	67421	78656	19862
57276	39136	9632	19664	49655
47730	58704	77056	198640	39724
9546	4784	9632	1993929	19862
14958582	160653	17501344		242508 (12)

Jan 10, 1939

A Boyer
Ted S. Callaway
Wiley Chambers

985 3.07

300 on

350
<u>73.55</u>
423.95
<u>.9639</u>
250.2
<u>771.12</u>
481.85
<u>1927.8</u>

1228) 27,260 (2319

2700
<u>2456</u>
2440
<u>1228</u>
12120
<u>11052</u>
1068

02289
<u>1300</u>
66571
<u>2219</u>
248570

481.85
<u>1927.8</u>
2417.612
<u>.9619</u>
112.8
<u>78552</u>
19638
<u>9819</u>
9819

S.S. Rock for 7.6

110.75832

149.4 — 6 = 27.26's
 186.7
 170.20 = 9546
 * 5 = 23.9's
 164.25
 11255 = 9784

110.7
<u>241.7</u>
352.4
<u>299.4</u>
53

300
<u>243.5</u>
199.3
<u>175.0</u>
160.6
<u>149.5</u>
1227.9

160.6
<u>175.0</u>
149.3

181.7
<u>150.35</u>
96324
<u>202.8</u>
10230 = 94325
245.2 on
<u>6.45</u>
99307

1305
<u>1228</u>
77

1228
<u>149.6</u>
1078.4
<u>.0222</u>
2156.8
<u>2156.8</u>
2394.048

1305
1228
77

DISTANCES FROM CORNER
FIRST POINT TO CORNER
TO HALL OF 1227.9

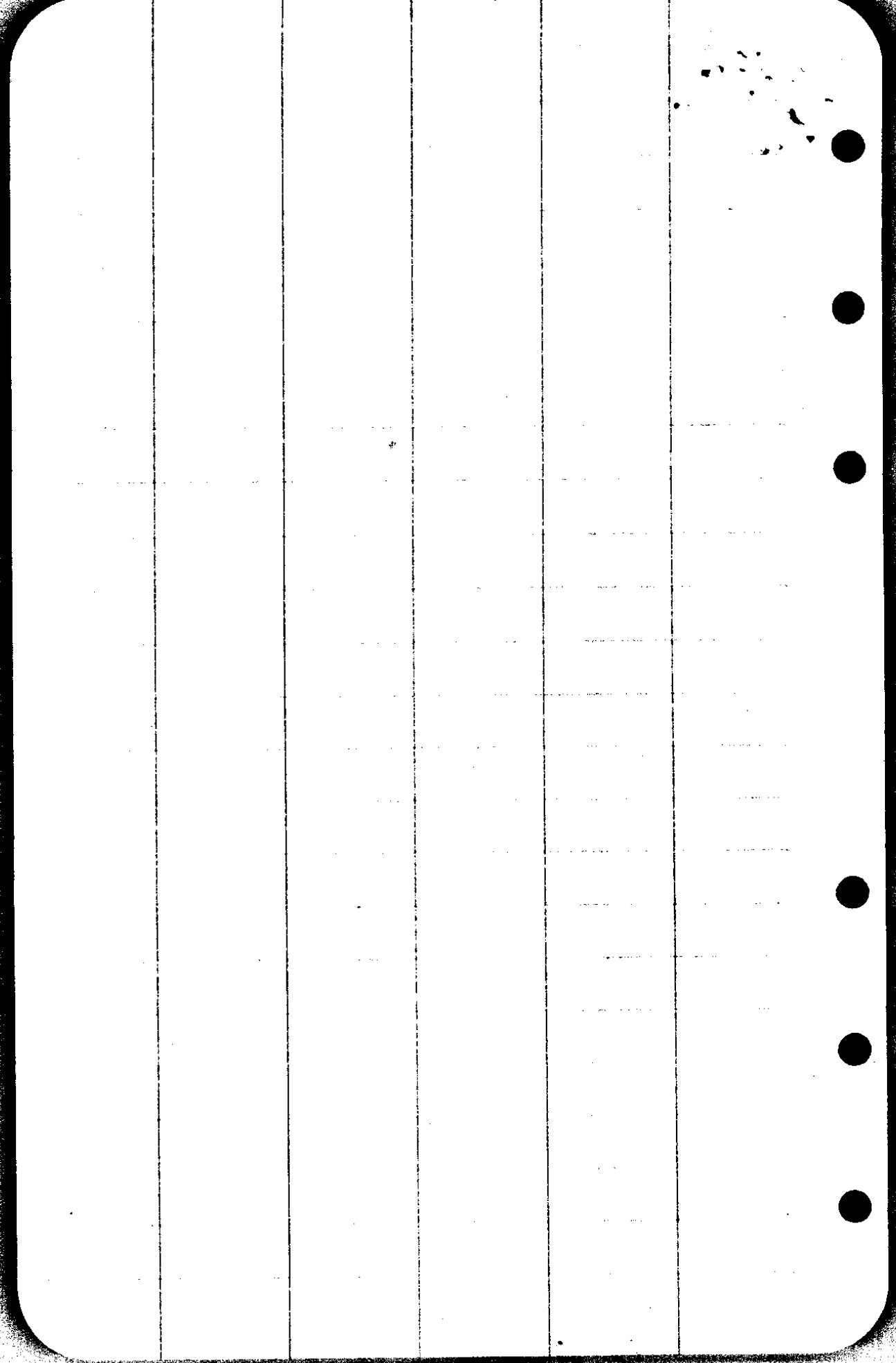
offset
 250.8
 on
 150.26'
 .9639
 0241.7

112.8
 on
 100.55'
 .9619

C.S. File No. 16/R

1/4 Cor. Pipe

10784²
0229
97056
10784
21568
21568
23929696



Drone 36" long
2" i.p. flush

Jan 10/1939
J.S. Snyder
A. B. Ober
F. S. H. Fisher
Wiley Chamb.

Cor 33 34
- 4 3

Identified from stump
of O.B.T. S 15° E 256 lks. also

O.B.T. N 80° W 309 lks. not chopped
out Set 2" x 48" i.p. 12" in
ground, in field

O.B.T. 44" Fir N 80° W. 205' remarked.

12" Chink N 10° E 271.5'

24" Fir N 40° W 104.0'

8" Alder S 30° E 244.7'

J.S. Snyder
B.B. Perkins
Elwood Nelson's
6-17-38

Det
24225
R/S

JAN 1924
W.A. Sagarber
J. J. Grimm
J.W. Cole

1/4 Cor bet 33 + 4 (N. Bdy Sec 4)

Cor. renewed from stump of large
W. Oak. N 51° W 229 lks. 151.1' 24

Fir Stump S 55° W 405 " 268'. Fence
corner 15' S + 10' West

Set i.p. 3 1/4" from which

10" W/O S 50-50' W 147.9'

30" Fir N 47° W 66.8'

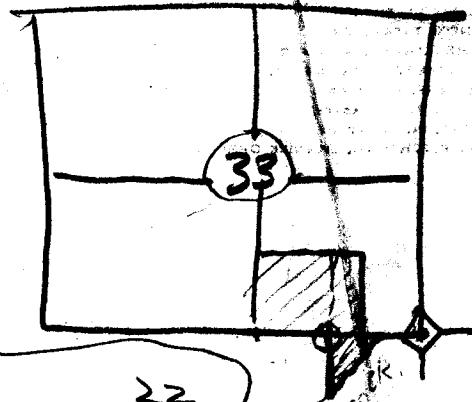
Renewed marking on this tree

AS.
1/10/1938

~~Chamberlin~~ Leona

Wiley, W
Leona

SW⁴SE⁴ + W²SE⁴SE⁴ 33 ²/₅



also Comm at NW cor of NE⁴NE⁴Sec 4 ²²/₅ 4
 Th. are S to pass ch, thence up P.O. to Sec line, th. W. to leg = 1 ac ±

Tuesday
 Jan. 11
 1938