

NW Cor  
D.L.C. 38.

1/4<sup>th</sup> Sec Line

Ranch  
House

10 Ac.

10 Ac.

Sec. 21  
Sec. 22

Property Line

SE<sup>4</sup>NE<sup>4</sup>Sec 21

SW<sup>4</sup>NW<sup>4</sup>Sec 22

800 Pipe 5"

PRW  
How much land do you expect  
to irrigate in this forty?  
Approximately only

PRW  
How much land do you  
expect to irrigate in  
this forty? Approximately

Road

← South Myrtle Creek

Diversion

1036' (Tie)

N 69°-53'E

SW Cor  
DLC 38

D.L.C. LINE

D.L.C. LINE  
Property Corner

1/4<sup>th</sup> Sec Line

-Sec. 21 - Sec 22  
1/4 Corner

E. & W. MID-SECTION LINE



DATA TO ACCOMPANY APPLICATION OF  
P. R. WEAVER, OF MYRTLE CK, ORE.  
FOR PERMIT FOR IRRIGATION WATER  
OUT OF SOUTH MYRTLE CREEK IN  
T. 29 S., R. 4 W., W.M., DOUGLAS COUNTY, ORE.

Scale, 1" = 300 ft

Oct. 1938.

20  
\$450

N.W. Cor  
D.L.C. 30

16<sup>th</sup> Sec Line

Ranch  
House

Sec 21  
Sec 22

Property Line

SE<sup>4</sup>NE<sup>4</sup> Sec 21

SW<sup>4</sup>NW<sup>4</sup> Sec 22

DITCH

10 ACRES  
To be irrigated

10 ACRES  
To be irrigated

5" PIPE

Diversion

SW Cor  
D.L.C. 30

D.L.C. LINE

N 69° - 53' E 1036' (Tie)

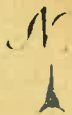
Tributary of S. Umpqua River

D.L.C. LINE  
Property Corner

1/16<sup>th</sup> Sec Line

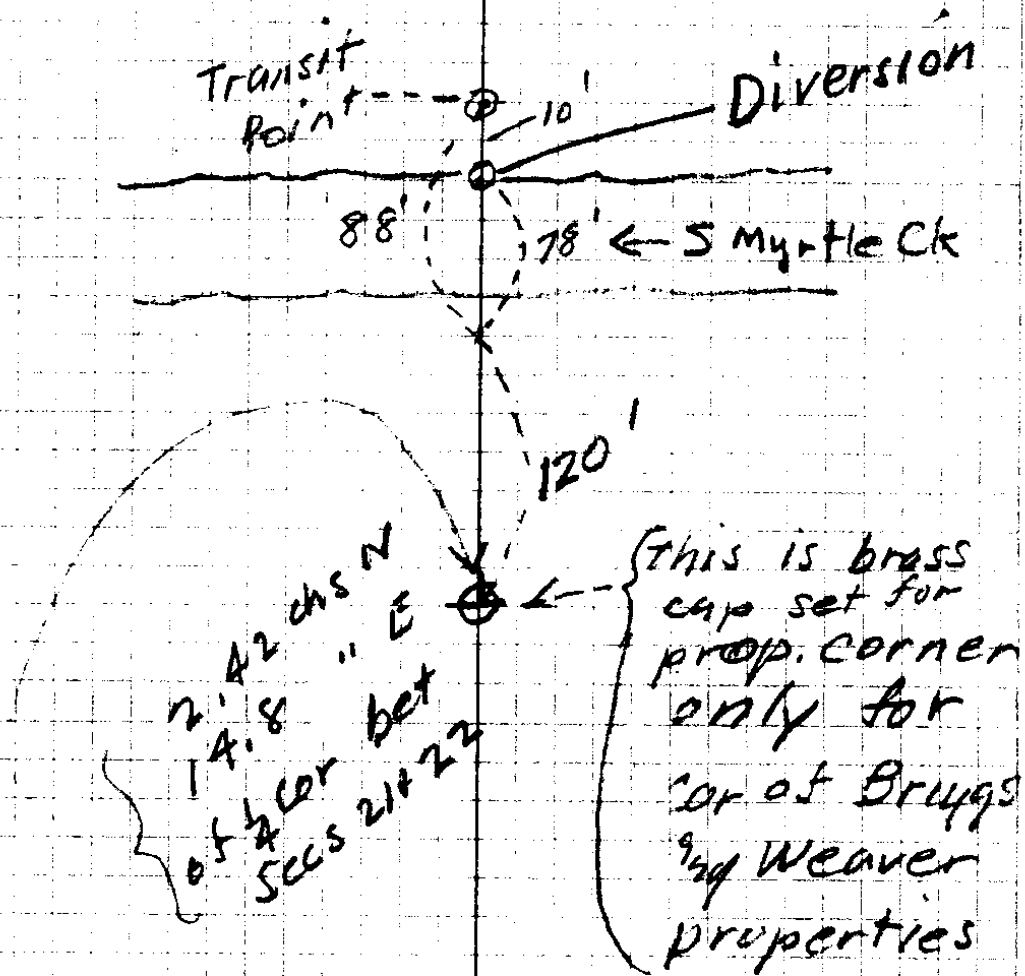
Sec 21 - Sec 22  
1/4 Corner

E & W MID-SECTION LINE



DATA TO ACCOMPANY APPLICATION OF  
P R WEAVER, OF MYRTLE CK, ORE  
FOR PERMIT FOR IRRIGATION WATER  
OUT OF SOUTH MYRTLE CREEK IN  
T 29 S, R 4 W, W 1 M, DOUGLAS COUNTY, ORE

Oct 1938



Buyer  
Shellakarger  
out 15, 1438

Data for P. R. Weaver's  
Application for water Rt  
out of S. Myrtle Ck  
to irrigate SE 1/4 NE 1/4 Sec 21  
SW 1/4 NW 1/4 Sec. 22  
10 Ac each place to  
be irrigated