

Tom Wharton  
T.26 S. R.4 W.

C.S. File No. 15/216

Sta Dist  $\Delta$   $\Delta$ R MC. C.G.

Cor.  
Cl. 43

518  $\Delta$  14-35

S14-30E

$\Delta$

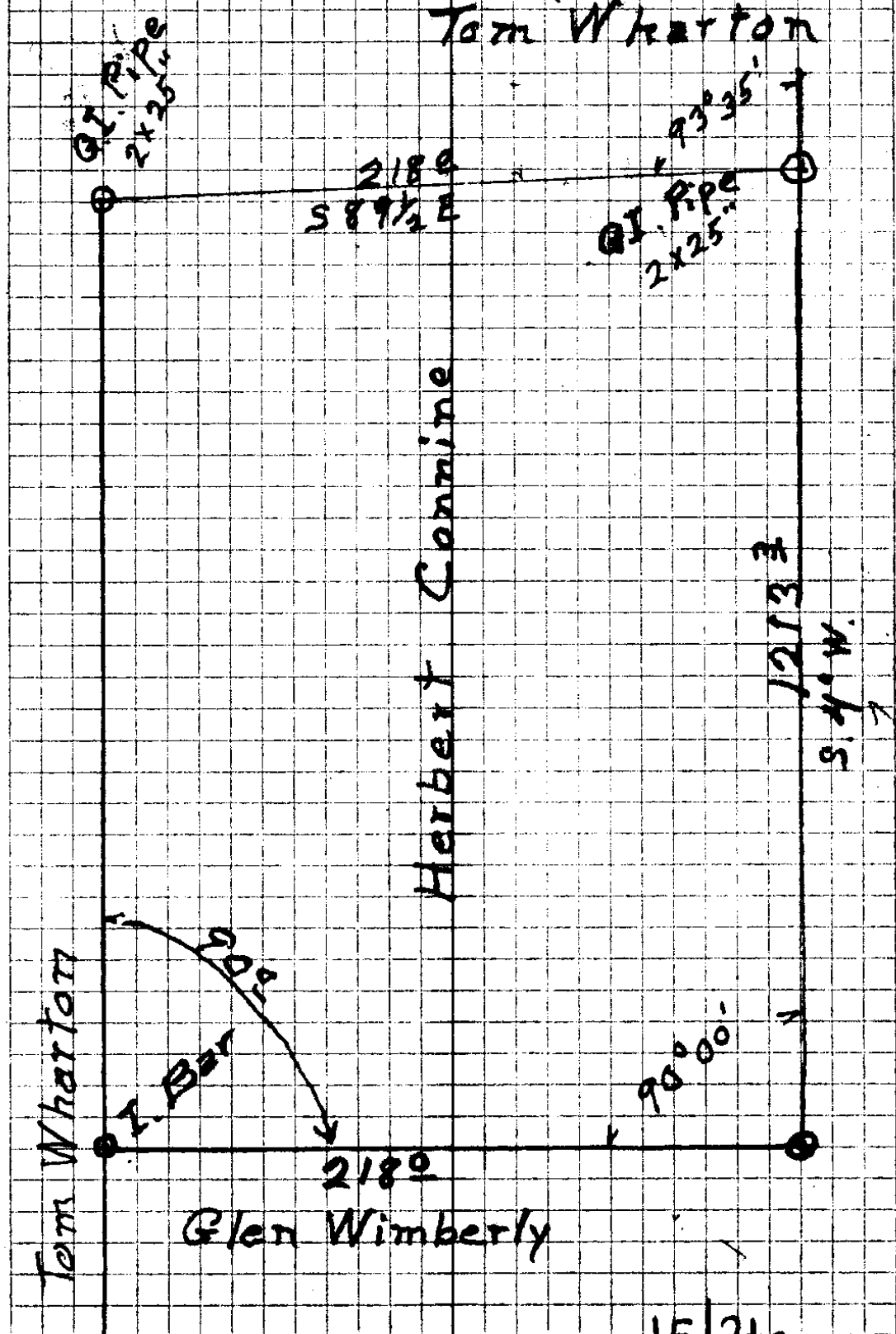
255  $\Delta$

S0°15'E.

S.W. Cor

T. 2 BS. R. 1/4 W 15-26 NOV. 28-38

ME Richardson  
Harvey Epstein Jr.  
Tom Wharton



Tom Wharton

Herbert Connine

Glen Wimberly

C. S. File No. 15/240

CS FILE FOLDER

CONTAINS

MORE

INFORMATION