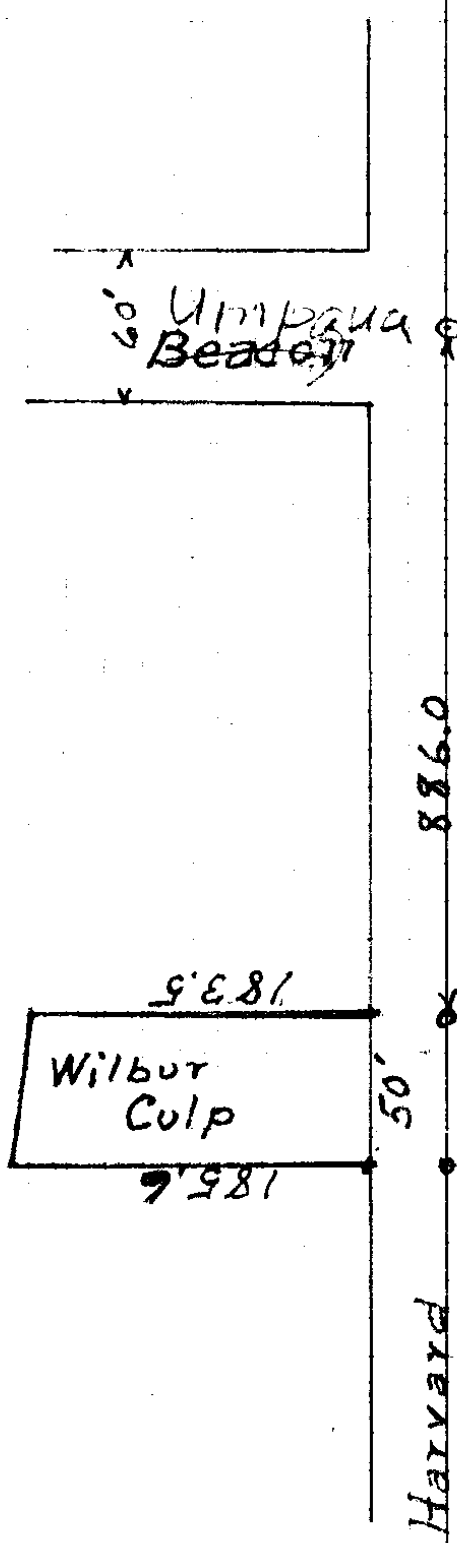


Jan. 30-37

Eppstein
Richardson
Lane



Culp

Started survey on the street monument
at the intersection of Umpqua Ave. with
Harvard Ave., ran east ^{on center line of Harvard} 886 feet
turned south and ran 30° to north
west corner, centering south 213 feet to
the south west corner. Then from
the north west corner ran east 50
feet parallel to center line of Harvard
Ave to the North-east corner.
at N, E, corner ran south parallel
to the west line run before and
at 1856 feet set the southeast
corner.

County Surveyor.

S. File No. 15/20