

S. 25 T. 26 S. R. 6 W.

Auto Axel

Umpqua River

N. 42° 34' W
132.3

N. 87° 51' E. 361.2

577' 15" W 50
Steel Bar
3/4" x 40"

889 A
Cliff Thornton

I.P. 1" x 30"

N. 82° 19' W. 320.2

140.0
S. 20° E.



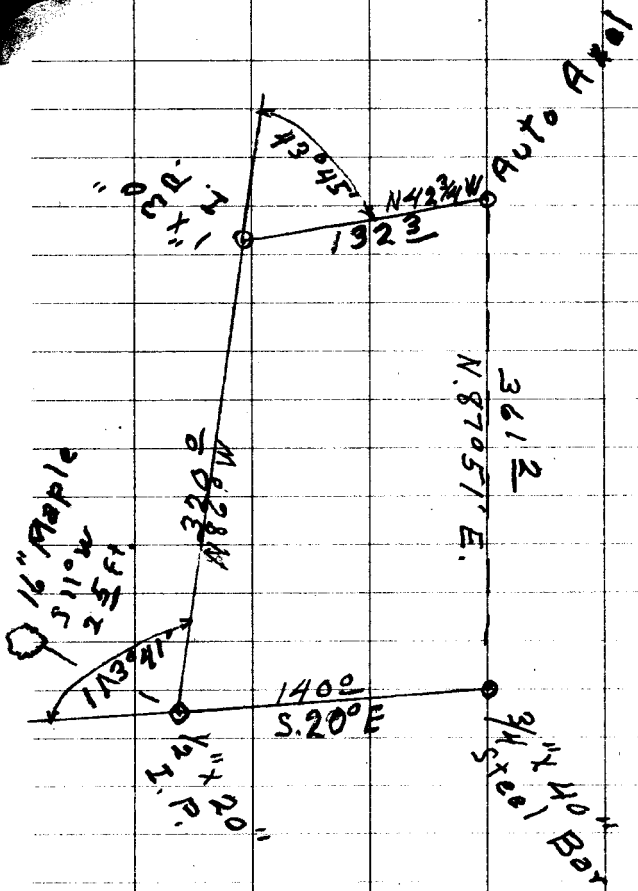
N 50° 43' W 237.0

I.P. 587' 30" E 144.5
1/2" x 20"

Scale 1" = 30 ft.

C. Thornton
S. 25 T26S. R6W
Apr. 24-1938

N.E. Richardson
C. Thornton
Darley Weir



Sta Dist L R CC M.C.

S.W. Co.
Lot 20

1810 31-24 N. 26° 35' E. N 25° E

1873 91° 02' N 4° 49' E N 2 1/2° W

3309 15° 02' N 86° 13' E. N 8 1/2° E

4200 10-50 N 71° 11' E N 70 1/4° E

4600 1-50 N. 82° 01' E N 8 1/4° E

706 1/2 32-53 N 70° 11' E. N 70 1/4° E

292 1/2 54-26 57° 56' E. 87° 6 3/4° E

670 52 1/2° E

N.E.
Lot

- 1
- 2
- 3
- 4
- 5
- 6
- 7

CS FILE FOLDER

CONTAINS

MORE

INFORMATION