

1 T 27-6 East 1/4 Sec 15
 2 T 27-6 M.C. On east line S 13
 3 T 27-6 NW Cor CL 43
 4 T 27-6 NW Cor CL 39
 5 T 27-6 SW Cor CL 59
 6 T 27-5 NE Cor CL 49
 7 T 26-7 35/36
 8 T 27-7 2/1
 9 T 29-7 NE Cor Sec. 27
 10 T 29-7 Cor between sec 26 & 26 1/2
 11 T 25-4 1/4 Cor. Sec. 20 & 21
 12 T 25-4 1/4 Cor. Sec. 17 & 20
 13 T 25-4 SW Cor James Oble D.L.C. # 41
 14 T 25-4 NE Cor D.L.C. # 41
 15 T 25-4 SE Cor D.L.C. # 41
 16 T 25-4 NW Cor Sec. 16
 17 T 25-4 SW Cor Sec. 16
 18 T 25-4 1/4 Cor Secs 16 & 17
 19 T 23-7 1/4 Cor Secs 17 & 20
 20 T 23-7 NE Cor D.L.C. 45
 21 T 28-5 1/4 Cor. Secs. 15 & 16
 22 T 28-5 15/14
 23 T 24-5 1/4 Secs 10 & 15
 24 T 24-5 1/4 Secs 15 & 22
 25 T 24-7 1/4 Secs 11 & 14
 26 T 27-4 SE Cor D.L.C. 45
 27 T 21-5 33/34
 28 T 21-5 4/3
 29 T 27-7 1/4 Cor 33/34
 30 T 27-7 Int L D.L.C. # 52
 31 T 27-7 SE Cor # 52 D.L.C.
 32 T 27-7 NE Cor D.L.C. # 53
 33 T 27-7 NE Cor D.L.C. # 53
 34 T 27-7 SW Cor D.L.C. # 51
 On East side # 52

34 T 29-8 1/4 Sec 9 & 16
 35 T 29-8 8/16
 36 T 25-6 NW D.L.C. 48
 37 T 25-6 Int Angle West Bdy D.L.C. 48
 38 T 25-6 Ext Angle West Bdy D.L.C. 48
 39 T 25-6 NE Cor D.L.C. 49
 40 T 25-6 NW Cor D.L.C. # 58
 41 T 25-6 SE Cor D.L.C. # 48
 42 T 25-6 SW Cor D.L.C. # 46
 43 T 25-6 NE Cor D.L.C. # 48
 44 T 24-5 1/4 Sec. 20
 45 T 26-6 D.L.C. 43
 46 T 26-6 1/4 Cor 22 & 23
 47 T 26-6 NW Cor D.L.C. 43
 48 T 30-4 1/4 Cor 22 & 23
 49 T 24-3 1/4 Cor 31
 50 T 24-3 2/13
 51 T 25-3 28/27
 52 T 25-3 1/4 4 & 5
 53 T 25-3 5/4
 54 T 24-3 32/33
 55 T 25-3 5/4

CS 15/11

(1935-1939)

J. E. McCLINTOCK, Mayor
A. J. GEDDES, Recorder
T. J. BROWN, Treasurer

COUNCILMEN
E. A. MCKEAN J. E. DENT
S. J. SHOEMAKER W. F. HARRIS
C. W. WHARTON JAMES HUTCHINGS
A. J. YOUNG A. J. LILBURN

City of Roseburg

IRA B. RIDDLER, City Attorney
BEN B. IRVING, City Engineer

Roseburg, Oregon

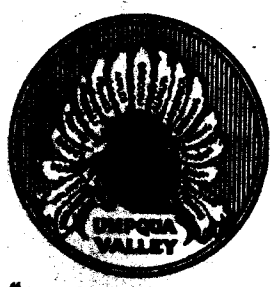
1)

$\frac{1}{4}$ Cor. Bet. 13 & 18 on East Line of 27-6
 $\frac{1}{2}$ " x 48" Pipe inside 2" x 48" Pipe About 250 ft. South
of H. Berg House in Fence Row
W. Oak 10" S. 57° W. 223⁵ ft.
" " 18" S. 24° 10' W. 242³ "

2)

M.C. on Right Bank of S. Umpqua River on E. Line of
T. 27-6 W Bet. Secs. 13 & 18
An Iron Rod $\frac{5}{8}$ " x 4 $\frac{1}{2}$ ' with 3 prongs on top 4 $\frac{1}{2}$ ' from
S.P.R.R. South Rail
W. Oak 14" S. 60 $\frac{1}{2}$ ° W. 117⁴ Ft.
A channel iron 1 $\frac{1}{4}$ " x 18" under Right of Way
fence Brs. N. 16 $\frac{1}{4}$ ° W 62 Ft.
About 45' S. of B.C. R.R. Curve North of cut
on R.R.

3)



"The End of the
Homesteaders Trail"

N.W. Cor. Cl. 63 T. 27-6 W.
Wagon Skein
Inside of East Rail S.P.R.R. 59^L Ft.
Soldiers Home Smoke Stack S. 45 $\frac{1}{2}$ ° W
Beacon Mt. Nebo S 3 $\frac{1}{4}$ ° W.
Mt. Rose Δ Sta. S. 89° E.



NW Cor. Cl. 39 T. 27-6W.

Rock 26" X 10" X 10" 8" under ground

W. Oak 8" S. 75° W. 213² Ft.

Marked C.S. Cl. 39 B.T.

NE Cor. Cl. 49 T. 27-5W.

I. Pipe 1/2" X 36"

B. Oak 15" S. 84° E. 113 Ft.

W. Oak 8" S. 27° W. 302 Ft

Mkd. C.S. Cl. 49 B.T.

S.W. Cor. Cl. 39 T. 27-6W

Plow Share

Notch in curb South 81 Ft.

Right Cor. Lower step Caskey

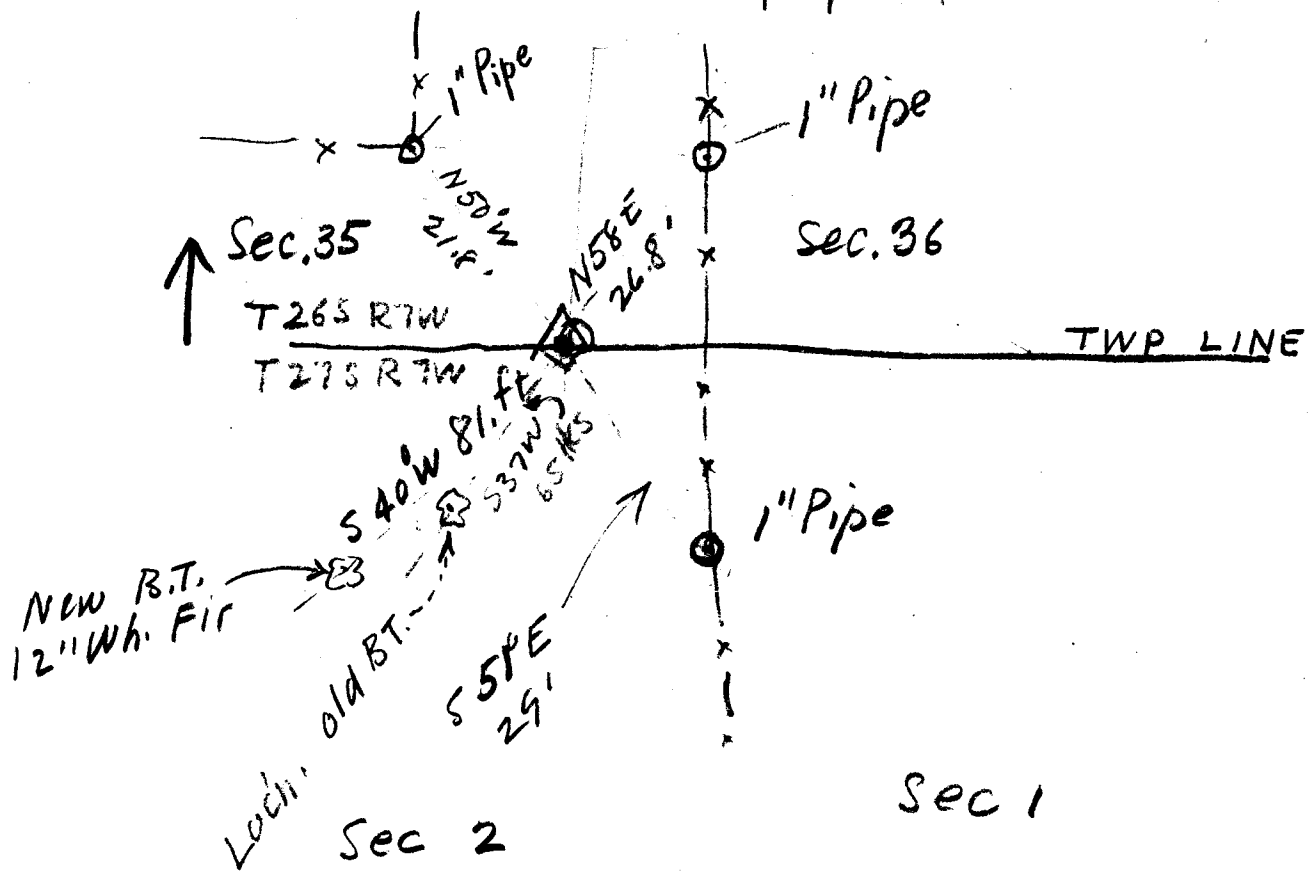
House S. 4° W. 69² Ft.

Cl. 39 & Cl. 49 are the same Cl.

Section Corner Renewed

June 2, 1938

Renewed from old remains of Bearing tree to the SW in sec 2 - stump of Oak tree. There are no trees in any other section so set pipe in all other sections - Drove a 1 1/2" pipe for corner



BEN B. IRVING

REGISTERED
Civil Engineer and Surveyor

Roseburg, Oregon

RENEWED GOVERNMENT CORNERS.

T 29 S R 7 W WM/

NE corner of section 27.

8
Corners as recorded in the government field notes in place except that the tree to the NW has been destroyed. Blazed and scribed a fir 8" diam. which bears N 29 W 93 lks. T 29 S R 7 W S 27 CS BT.

Corner between section 26 and 26 $\frac{1}{2}$ on the south boundary of section 23.

9
A rock as described in the government field notes. One bearing tree has been destroyed by fire. The other is down and rotting. Marked new bearing trees

A cedar 8" diam. which bears S 15°W 25 lks. blazed and scribed T 29 S R 7 W S 26 $\frac{1}{2}$ CS BT.

A fir 8 " diam bears S 20°E 22 lks blazed and scribed T 29 S R 7 W S 26 CS BT.

Set by Ben B. Irving July 30, 1938.
Witnesses N. E. Richardson.

Renewed Government Corners

T 25 S., R 4 W., WM.

1/4 corner between sections 20 and 21

10) Location identified from an original bearing tree now down and almost destroyed but part of the scribed "T" of the BT still visible. White Oak 18", N 50°E 215 lks.

Drove a 1"x3" channel iron 36" long 35" in the ground for the corner from which an Oak 8" dia. bears N 45°E 61.5 ft. and a Cedar 12" dia. bears N 86°W 188.7 ft. both blazed and scribed 1/4 S CS BT.

June 15, 1939

1/4 corner between sections 17 and 20.

11) Location identified from original bearing trees both of which are standing. The Bt fir 18" dia. S 70°E 52 lks. is now dead and was chopped out. Scribe marks in good condition.

Set a 6"x6"x48" cedar post for the corner properly scribed and marked new Bts as follows:

Fir 12" dia. N 37°E 36 lks.

Fir 30" " S 79°W 65 lks.

Fir 24" " N 32°W 58 lks. original BT. remarked.

June 19, 1939.

SW corner James Odle DLC No.41.

12) Location identified from X on rock 2 1/2 x 2 1/2 x 3' above the surface N 50° E 13 lks., and both original bearing trees which are a fir 24" dia. N 89°E 16 lks and a Fir N 30°W 3 lks. The original corner tree has been destroyed by fire only a part of the stump remaining.

Drove a 4"x4"x56" post in the old stump and remarked the bearing object and both bearing trees.

June 17, 1939.

NE corner of the James Odle DLC No. 41.

13) Original corner has been removed or destroyed. Location identified from an Oak 20" dia. S 68°W 25 lks. which is an original BT. Has been chopped out but scribe marks are still visible. Oak S 10 1/2°E 127 lks has been cut but the old stump remains and agrees for bearing and distance.

Set a sandstone 8"x10"x30" in a mound of rock for the corner. Chisled a X on top and CL 41 on the SW face. Marked an Oak 12" dia. which bears N 40°E 25 lks and an Oak 12" dia. S 6°W 86 1/2 lks for new bearing trees.

June 21, 1939

SE corner of M&S James Odle DLC No 41.

14) Position identified from an Oak which shows axe marks but is badly rotted and no scribe marks could be found. Using this as the original bearing tree which was an Oak 15" dia. S 48°W 60 lks. it would place the SE corner N 89°47'E 1955.8 ft from the SW corner of the claim and South 4878.5 ft. from the NE corner. This does not check the original lengths of these lines but does check the bearings very close.

SE Corner of the James Odle DLC No 40 cont.

Drove a 3/4x 24" pipe for the corner 39 ins. in the ground for the
A Fir 24" dia. bears S 70°E 56 lks. blazed & scribed SE DLC 41 CS BT
a Fir 50" dia. bears N 21°E 83 lks. " " " "

June 22, 1939.

NW corner of Section 16.

Position identified from the stump of an old fir which is presumed to be the 80" Fir S 60°E 57 lks as described in the original government field notes. This is the only evidence of such a tree which approximately agrees with the ties given in the notes of the James Odle DLC No 41 and the distance as called for from the Calapooia Creek on the section line north. The 1/4 section and section corner north of this corner were both completely destroyed and the one west was in an old skasking. The 1/4 section corner and the section corner south of this corner had both been destroyed. The 1/4 section corner east from this corner was located and had been recently renewed by Deputy County Surveyor Boyer.

The ties to these adjoining corners are:-

1/4 corner 9&16 N 88°33'E 2592.1 ft. (recorded 19.85 chs.)

NE corner DLC 41. North 1521.5 ft and east 359.3 ft. (recorded north 19.92 chs and east 5.66 chs.)

Drove a 1"x72" pipe 54" in the ground for the corner. Blazed and scribed a Fir 18" dia. which bears S 18°W 107.6 ft.

an Oak 14" dia. which bears N 35°W 115.5 ft. and

an Oak 12" dia. which bears N 11°E 115.3 ft.

June 22, 1939.

SW corner of section 16.

This corner was set from double proportional measurements from the nearest corner in each direction as provided for by law, its location having been entirely lost or obliterated.

Drove a 3/4x 36" pipe 30 ins in the ground for the corner from which a Cedar 12" dia, bears S 36°W 61 1/2 lks and a Fir 36" dia. bears N 60°W 107 lks. both properly blazed and scribed. No other trees were close enough to be used for bearing trees. This corner is located above and in the clearing for the California-Oregon Power Co.'s high tension power line.

June 21, 1939.

1/4 section corner between sections 16 and 17.

This corner was set by proportional measurement between the NW and the SW corners of section 16, its location having been completely destroyed on the ground.

Drove a 3/4x36" pipe for the corner, 30" in the ground. Piled rock around the pipe. A Fir 12" dia. bears N 41°W 43 lks blazed and scribed 1/4 S 17 CS BT.

June 22, 1939.

These corners were all renewed by BEN. B. IRVING Deputy County Surveyor in the course of a survey made for the State of Oregon. Witnesses were N. E. Richardson, Harvey L. Eppstein Jr., Robert Helliwell.

BEN B. IRVING

REGISTERED
Civil Engineer and Surveyor

Roseburg, Oregon

T 23 S., R 7 W WM.

1/4 Section Corner between sections 17 and 20.

18) Corner as set by Deputy Woods in 1925 has been pulled up. Replaced same stake and drove a 3/4"x24" iron pipe alongside and even with the surface of the ground. Bearing trees in excellent condition.

NE. Corner of the Ziba Dimmick D. L. C. No 45.

19) Location identified from both original bearing trees as described in the original government field notes. Trees dead and deteriorating rapidly.

Drove a 1"x24" drift pin ~~flush with the ground~~ flush with the ground for the corner and a 1"x20" pipe 10" in the ground alongside for a marker., from which a black oak 16" diam bears East 13 lks and a white oak 16" diam. bears S 45°W 57 lks both blazed and scribed D.L.C.45 CS BT.

Ben. B. Irving Deputy Co. Surveyor.
July 9, 1938.

Witnessed by
N. E. Richardson
S. A. Mode
G. C. Sparks.

BEN B. IRVING

REGISTERED
CIVIL ENGINEER AND SURVEYOR

Roseburg, Oregon

T 28S., R 5 W., WM.

20) $\frac{1}{4}$ section corner between sections 15 and 16.

Stake placed by Deputy Surveyor Woods 6"x6"x24" above ground intact and in good condition. Original bearing trees scribe marks almost rotted off. Trees in good condition so reblazed and scribed original bearing trees.

1-8-38.

21) $\frac{1}{4}$ section corner between sections 22 and 23.

Location determined from both original bearing trees as recorded in government field notes except that the 24" laurel N 50°E is 32 lks. distant instead of 23 lks. as recorded. Set a 10"x14"x20" sandstone rock for the corner with $\frac{1}{4}$ "S chiseled on the S face. Set a 4"x4" oak post alongside scribed $\frac{1}{4}$ "S. Reblazed and scribed both original bearing trees 24" dia. N50°E 32 lks., distant scribed $\frac{1}{4}$ "S 23 CS BT
Fir 38" dia. S 60°W 35 lks distant scribed $\frac{1}{4}$ "S 22 CS BT.

~~1-20-38.~~ 1-6-38
BTJ

22) Section corner sections 14-15-22 and 23.

Location determined from one original bearing tree a 12" black oak N 35°W 45 lks. distant. This tree was chopped out and the scribe marks were in good shape. Due to the weight of the tree on one side it fell on being chopped out. Evidences of the other original bearing trees remain in the form of old rotten stump roots and holes which check the original notes as recorded.

Set a sandstone rock 8"x10"x16" 12" in ground for corner with corners notched as prescribed in the General Land Office Survey Manual. Set a 4" post along side. Blazed and scribed new bearing trees as follows:

- a Fir 12" dia. N 12°E 44 lks. scribed T28SR5WS14 CS BT
- a fir 10" " S 41°E 24 lks. " T28SR5WS23 CS BT
- a fir 12" " S 86°W 23 lks. " T28SR5WS22 CS BT
- a fir 14" " N36°W 60 lks. " T28SR5WS15 CS BT.

1-6-38

Witnesses: N. E. Richardson.
Plinn Cooper.
Wesley French.
Frank Bohme.

2 versions of these corners see next pg

Ben Not Paid

> $\frac{1}{4}$ section corner between sections 15 and 16 T 28 S R 5 W WM.

20) Post 6"x6"x24" above ground as set by Deputy County Surveyor Woods in place and excellent state of preservation. Original BTs in good shape except that the blazes were badly rotted and scribe marks were nearly gone. Re-blazed these original bearing trees and placed new scribe marks thereon indicating the corner.

Jan. 3 1 938.

↗ $\frac{1}{4}$ section corner between sections 22 and 23 T 28 S R 5 W WM.

21) Location determined from both original bearing trees which were alive and standing.

A laurel 24" dia. bears N 50°E 32 lks instead of 23 lks as recorded in the original government field notes.

A fir 38" dia. bears S 60°W 35 lks.

Set for the corner a sandstone 10"x14"x20"- 12" in the ground with $\frac{1}{4}$ S chiseled on the S face. Set a 4"x48" oak post alongside scribed $\frac{1}{4}$ S CS.

Reblazed and scribed both original bearing trees as described above.

↗ Section corner to section 14, 15, 22, and 23 of T 28 S R 5 W WM.

22) Location determined from a 12" Black oak original bearing Tree N 35°W 45 lks which we chopped out. Scribe marks were plain and legible. The tree fell due to its weight being all on one side. A black oak rotten stump N 17°E 34 lks with holes where the original blazes were was another original bearing tree. Other bearing trees destroyed but evidences of stump and roots check their location as to bearing and distance.

Set a sandstone 8"x10"x16" 12" in the ground for the corner from which a fir 12" dia. bears N 12°E 44 lks; a fir 12" dia. bears S 86°W 23 lks.; a fir 10" dia bears S 41°E 24 lks and a fir 14" dia. bears N 36°W 60 lks.

Set by Ben. B. Irving Jan 6 1938.
Witnessed by N. E. Richardson
Blinn Cooper
Wesley French
Frank Bohme.

2 versions of
these corners
see previous Pgs

BEN B. IRVING

REGISTERED
CIVIL ENGINEER AND SURVEYOR

Roseburg, Oregon

Renewed Government Corners

T 24 S., R 5 W., WM., $\frac{1}{4}$ section corner between sections 10 and 15.

23)

Location identified from an original bearing tree N 15°E 54 lks. The tree was down and the blazes so badly rotted that the scribe marks were no longer visible. The original bearing tree S11 $\frac{1}{4}$ °W 116 lks has been completely destroyed by fire. The hole where the stump stood was visible and checked the original field notes for location. Set a $\frac{1}{2}$ "x12" bolt for the corner driven 1" underground. Set a 6" oak post alongside marked $\frac{1}{4}$ S on the E face, S15 CS on the S face and S10 on the N face from which a white oak 16" dia bears S 43°W 83.4 ft blazed and scribed $\frac{1}{4}$ S15 CS BT and a white oak 8" dia bears N 51°W 138.0 ft., blazed and scribed $\frac{1}{4}$ S10 CS BT.

T 24 S., R 5 W., WM', $\frac{1}{4}$ section corner between sections 15 and 22.

24)

Location identified from the property corner as outlined by fences running N & S and W from the corner. All evidences of the mound and pits and the charred stake have disappeared. Evidences show that this has been used for the true corner for a great many years. Its location fits the topography as recorded in the original field notes. Set a 3/4"x24" shaft with gears for the corner.

Set by Ben. B. Irving
Witnessed by N. E. Richards
J. F. Lamorwau
Edward Lamoreaux.

Jan. 1, 1938.

2 versions
of these corners
see next pg

Ben Not Paid

T 24S, R 5 W WM.

➤ $\frac{1}{4}$ section corner between sections 10 and 15 T 24 S R 5 W. WM.

23) Location identified from an O. B. T. a white Oak which bears N 15°E 54 lks. This tree is down and rotting. The blaze marks were plain but the scribe marks had rotted off. The O. BT. S 11 $\frac{1}{4}$ °W 116 lks had been completely destroyed by fire but the stump hole where the tree stood checks for bearing and distance.

Drove a $\frac{1}{2}$ "x12" iron bolt for the corner and set a 6" white post alongside 24" above ground and ~~marked~~ scribed $\frac{1}{4}$ S on the E face; S 15 CS on the S face; and S 10 on the N face.

Marked new bearing trees as follows:

a white oak 16" dia. bears S 43°W 83.4 ft., blazed and scribed $\frac{1}{4}$ S 15 CS BT.

An oak 8" dia. bears N 51°W 139.0 ft, blazed and scribed $\frac{1}{4}$ S 10 CS BT.

➤ $\frac{1}{4}$ section corner between sections 15 and 22 T 24 S R 5 W WM.

24) Location identified from property corner and line fences. This fence corner has been used for a great many years as the true corner and has never been questioned. Its location fits the local topography as recorded in the original government field notes. All local traces of the original corner have disappeared.

Drove a $\frac{3}{4}$ "x 24" piece of shafting with a gear attached for the corner at the fence corner described in the previous paragraph.

There were no trees near available for bearing trees so none were set. A $\frac{1}{2}$ "x27" bolt for a property corner bears N 0°11'E 1320 ft. along the line through the center of section 15. A $\frac{3}{4}$ "x30" iron pin set for a property corner is S 89°36'W 1320 ft.

These corners set by Ben. B. Irving
Jan. 3, 1938.

Witnesses: N. E. Richardson
J. F. Lamoreaux.

2 versions
of these corners
see previous pg

BEN B. IRVING

REGISTERED
Civil Engineer and Surveyor

Roseburg, Oregon

$\frac{1}{4}$ corner between sections 11 and 14 T 24 S R 7 W WM.

Original corner tree 12" dia. now 18" dia. in place and in good shape. original scar has been chopped out. scribe marks visible. Drove a 1"x48" pipe along side original corner tree.

Original bearing tree Fir 14" dia. (now 30" dia) N 40°W 34 lks alive and in fair shape. Original scar has been chopped out and scribe marks are barely legible. scribe $\frac{1}{4}$ S 11 CS BT in bark.

Remark the original corner tree in the bark $\frac{1}{4}$ S 11 on N face and $\frac{1}{4}$ S 14 CS on S face.

New Bts. Fir 20" dia. S 15°E 42 ft. Scribed $\frac{1}{4}$ S 14 CS BT.

Fir 20" dia. N 62°W 16 ft. $\frac{1}{4}$ S 11 CS BT

Ben. B. Irving Deputy County Surveyor.
November 17, 1938.

Witnesses: N. E. Richardson.
T. E. Higginbotham.
"Buster" Higginbotham.

1/4 22 4 22 T 3 2 S 17 4 W

Sec 22-23 " "
27-28

NW cor 10 4 C. 7 2 7 - 5

NW cor " 7 2 7 - 5

C. & File No. 15/11

Renewed Government Corners

T 27 S., R 4 W., WM

26) SE corner of the Wm. A. Willis DLC No 45.

This corner is a 6"x14"x6" above the ground sandstone. The original bearing trees have been chopped out and scribe marks no longer legible.

Blazed and scribed a Fir 24" dia. N 55°W 33 lks SE DLC 45 CS BT.
and a White Oak 12" dia. which bears S 49°E 63 lks. " " " "

June 30, 1939.

Set by BEN. B. IRVING Deputy County Surveyor, witnessed by R. L. Irving
and G. A. Landbloom.

27)

Sec Cor $\frac{33}{4} / \frac{34}{3}$ T21S R5W

Location Identified from Stump
OBT. S15°E 256 lks - scribe marks
clear & legible & OBT N80°W 309 lks
(not chopped out)

Set 2" x 48" Iron Pipe 12" in ground.
(could not drive further acct. solid rock)
in field

OBT 44" Fir N80°W 205ft N marked

12" Chinquapin N 10°E 271.5ft

24" Fir N 40°W 104ft

8" Alder S 30°E 244? ft

11/5/11
ST
NO. 1511

28)

1/4 Sec Cor. 33/34 T21S R5W

Location Identified by distance
from Sec Cor - Distance from Small
Creek - OBT S60°W 98 lks - blazed but
& previously chopped out - all scribe
marks obliterated - Stumps OBT
Rotted & No scribe marks S 37°E
162 lks.

Set for Cor Sandstone 8' x 10' x 18"
10" in ground chiseled top & 1/4 Sec

Set near BTs.

Field No. N62°W 49' ft

Oct 12, 1910 E 25 ft

Blazed & Seamed 1/3 CS BT.

Set 6-17-38 by

Ben. B. Irving Dep. Co. Survey

Witnesses

J. S. Snider

Harvey Epstein

Elwood Nelson

BEN B. IRVING

REGISTERED
Civil Engineer and Surveyor

Roseburg, Oregon

T 275R7W

29) Int. L. Corner. So. Bdry DLC # 52.

B.T. dead.

Drove $3/4$ " x 18" pipe along side corner post

30" Fir $52^{\circ}W$ 61.5 ft. blazed & scribed DLC 52 CS BT.

Oct 16 1938

SE Cor DLC 52.

30) $3/4$ " x 40" Pipe 30" in ground in mound of rock.
24" diam x 12" high.

Boulder 30" x 48" x 14" high bears $565^{\circ}W$ 5 ft
with X and B.D. chisted on surface.

Location identified by distance from Int. L. Cor
and Hole where Oak tree had burned out for location
of old BT

10-16-38

NE Cor DLC 52 + NW Cor DLC 51

Sandstone 6" x 14" x 4" ~~high~~ above ground has been in place

30) for many years. DBTs. completely obliterated.

Blazed & scribed a 12" Ash ~~with~~ DLC 52 DLC 51 CS BT.
bears North $D. 7$ ft.

10-16-38

32) Drove a $3/4$ " x 36" Iron Pipe for the NE Cor DLC # 53
12" Oak $558^{\circ}W$ 17.165 as set 1929 by Co. Surv. Eppstein
in place & in good shape

10-16-38

33) SW Cor ~~DLC # 51 on~~ E bdy DLC 52. Set by
proportional measurement between the NE + SE Corners of
DLC 52. Set a 3" x 3" x 24" Sandstone 12" in ground chisted 51 on
NE Face. 14" Fir bears $N28^{\circ}E$ 16.6 ft. blazed & scribed

51 CS BT

U.S. File No. 15/11

Set by Ben B. Irving, Dep. Co. Surv.
Witness - N.E. Richardson
N. Conn

T 245 R 8 W

1/4 Sec Cor bet Sec. 9 & 16.

34)

Location identified by both orig. BTs badly rotted.
Set 3/4 x 16" Iron Bar. with 4" x 4" post alongside

Fir 22" diam bears N48°E 22.7 ft blazed & scribed 1/4 S 9 CS BT
Fir 18" " " 576 1/4 W 21.5 " " " 1/4 S 16 CS BT.

Sec. Cor 8-9-16-17

Location identified from Q. BT. 36" Douglas Fir N 20° W 30.4 ft
in good condition - Cedar BT. N E only rotted stump
remaining

Set 4" x 4" x 36" cedar Post for corner at Fence corner.

35)

24" White Fir 580° W 13.8 ft. mtd. T295 R8 W S17 CS BT

12" " " N35° E 9.4 " " T295 R8 W S9 CS BT

12" Doug. fir 540° 29. ft " " T295 R8 W S16 CS BT.

10-25-38

Ben B Irving Dep. G. Surv.
R-L. Irving Witness
Louis Papast

BEN B. IRVING

REGISTERED
Civil Engineer and Surveyor

Roseburg, Oregon

Corners set by BEN. B. IRVING, Dep. Co. Surveyor

Witnesses. N. E. Richardson

Jas. McHugill

Renewed Corners.

T 25 S R 6 W WM.

NW Corner of the E. Williamson DLC No. 48

36) > Location identified from an old oak stake bearing correct scribe marks. This is evidently the corner as renewed by Surveyor Briggs in 1892 although the bearing tree is down and the butt section burned off. Checks for bearing and distance. Drove a 3/4" iron pipe alongside Blazed and scribed an oak 42" diam. S 60°W 44 ft. L

Interior Angle Corner on the West Boundary of the E. Williamson DLC No. 48.

37) > This corner is located at an anchor post and fence corner. The bearing trees as set by Surveyor Briggs were identified and checked for bearing and distance. One had been cut and sprouted but when the old stump was chopped out the scribe marks were plain. Drove a 3/4" x36" iron pipe for the corner from which an oak 8" diam bears S 24°E 16.6 ft. and an oak 18" diam bears N 12°W 28 ft. both blazed and scribed CL 48 CS BT. This is identical with the exterior angle corner on the Sputh boundary of DLC 47.

Exterior angle corner on the West boundary of the E. Williamson DLC No. 48.

38) > All traces of this corner have been destroyed. Its position comes in the edge of a prune orchard and was located by measuring 54.1 ft. (82 lks.) north of the NE corner of the Jos. Cline DLC No. 49 which is a sandstone 3"x12"x12" above the ground as described in the original field notes. Drove a 3/4"x36" iron pipe for the corner. There were no trees available which were suitable for use a bearing trees.

NE Corner of the Jos. Cline DLC NO. 49.

39) > The sandstone 32"x12"x 12" above the ground was in place as described in the original field notes. No. suitable bearing trees were available. Drove a 3/4"x36" iron pipe alongside the corner rock. This corner is located in a fence angle alongside the county road between Oakland and Elkton on the West side of Calapooia Creek.

BEN B. IRVING

REGISTERED
Civil Engineer and Surveyor

Roseburg, Oregon

Renewed Corners .

T 25 S., R 6 W., WM.

40) N.W. corner of the J. W. Knott D.L.C. No. 58.

Original stone in place. all bearing trees destroyed.

Drove an iron pipe 3/4" dia . alongside stone.

An ash 8" diam. bears N 50°E 35 ft. blazed and scribed
NE Cor. CL 1/2' CS BT.

41) SE Corner of the E. Williamson DLC No 48.

All evidences of the original corner destroyed or obliterated.

A 3/4"x36" iron pipe set for the corner by proportional measurements
between the SW cor of DLC No 48 and the NE cor of DLC 59.

No trees or objects available for reference.

42) SW Corner of the J. H. Medley DLC No. 46.

All evidences of the original corner destroyed or obliterated.

A 3/4"x 36" iron pipe set for the corner using a tie given in the
deed of property to G. M. Leeper from bearing tree (now down
and rotten) given as the corner on the south boundary of the
county road. An Oak 10" diam. bears N 8°E 94 ft. blazed and
scribed SW COR CL 46 CS BT.

43) NE Corner of the E. Williamson DLC No. 48.

All evidences of the original corner and of the corner set by
surveyor Briggs in 1892 have been destroyed or obliterated.

A 3/4"x36" iron pipe driven for the corner using ~~the~~ proportion 1
distances as obtained and computed through the tie given in the
deed of the property (SW COR.) now owned by C.A.Goff and distances
as called for in the original descriptions of DLCs. NOs
46, 47 and 48. An ash 16" diam. bears N 87°W 92.7 ft. and an
ash 16" diam bears S 25°W 76.7 ft. both blazed and scribed
CL 47 or 48 and CS BT.

Corners set by Ben. B. Irving, Dep. Co. Surveyor.
Witnesses N. E. Richardson.
Jas. McHugill.

Constr. LINE DATE 6/4/37 PARTY Hall T.

Cornell

PROJECT Turkey Hill - Chenoweth Park Gerlach

Form 58-A-20M-12-35

44)

Note! - Position of this stone was not tied to witness trees and may not be in its original position. A brass plug was placed in the concrete surfacing marking the position of this stone as found while setting flagstaples.

Tie to Center Section 20 T.24 S., R. 5 W., W.M.

1473+41.3 P.C.S.

1580.0
Tang. of Curve

2000' C

1471+00 P.O.C.

12.3

Center Section 20
Found 5' x 7' x 12" Stone marked C.S.

1470+89 P.O.C.

Reference Notes for Center Section 20

1473+41.3 P.C.S.

P.O.C. 1471+00

Marked R.P.
G. Sec. 20
Brass Plug in
Conc. Mon.
Hub & Jack

400.32

52.55

54.0

97°32'

Brass Plug in Conc. Pavement marking position stone was found

Stone

60.0'

2000' Curve

Brass Plug in
Conc. Monument
marked C. Sec. 20

i. s. File No. 15/11

COMMISSIONERS

HENRY F. CABELL, CHAIRMAN, PORTLAND
 E. B. ALDRICH, PENDLETON
 F. L. TOU VELLE, JACKSONVILLE

H. B. GLAISYER, SECRETARY

R. H. BALDOCK
 STATE HIGHWAY ENGINEER
 SALEM

OREGON STATE HIGHWAY COMMISSION

SALEM

Eugene, Oregon.
 December 11, 1937.

IN REPLY PLEASE
 REFER TO FILE NO.


Mr. H. L. Eppstein,
 County Surveyor,
 Douglas County,
 Roseburg, Oregon.

Dear Sir:

During the course of construction of the Turkey Hill-Chenoweth Park Section, Pacific Highway, there was found a stone marked C.S. which had been set at some time for the center of Section 20, T. 24, S., R. 5 W., W.M. As it was necessary to destroy the stone, we have replaced its position by setting a brass plug in the concrete pavement, and also referenced the plug in the pavement out by placing brass plugs in two concrete monuments. The monuments were set adjacent to the east right of way line.

A copy of notes to cover the field work are being enclosed herewith.

Very truly yours,


 E. E. Umphlette,
 Resident Engineer

EEU:
 cc/ K. D. Lytle

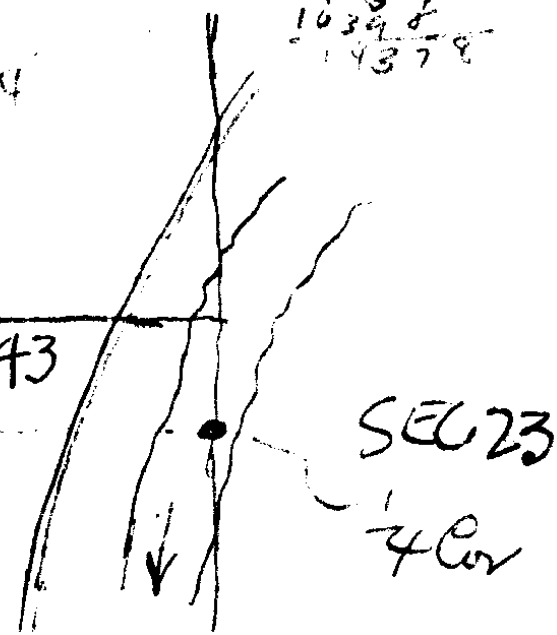
15.
15.
2346
06
1428
15708

114
66
68
7524

1733
66
10398
10398
14378

Henry
Evans D.L.C. 43

45)
SEC. 22
T. 26-6



RD. 31

80 00
44 19
35 81
21 40
21 48
2367

N. Bet 22 + 23

44.19 set Meander Cor. fr wh

46) a Y.O. 24" N $\frac{1}{4}$ ° E. 114 Wks. - 75'
" 26" N $68\frac{3}{4}$ ° W. 238 " - 157'

46.50 Geo. Evans Ho. S. 20° W
51.00 Foot Hill

For N. Bet CL. 43

47) 111.26 Meand. Post on Pt. BR. River
fr. wh. a Y.O. 24" N. 15° E. 114
" 26" N $68\frac{3}{4}$ ° W. 238

N. E. Cor. Henry Evans

D. W. C. 43 - T. 26 - 6

F Reset as per
Old Y.O. B. T. Cut down
- N. $\frac{1}{4}$ ° E. 75 $\frac{1}{2}$ ft. Marks

Plain - drove 1" x $\frac{3}{8}$ " I. Pipe
Fr. Wh.

A 36" Maple N. $70\frac{1}{4}$ ° W. 63 $\frac{5}{8}$ ft.
A 36" " S. $82\frac{3}{4}$ ° W. 76 $\frac{8}{8}$ ft.

Dec. 10 - 37

Frear

Milt Miller

Gene Richardson

EPR here
is another
corner.

T. -30-4

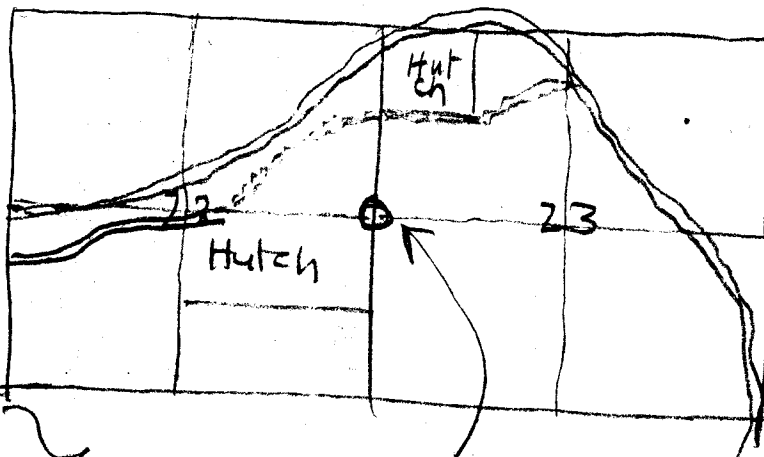
12-31-38

Frear

G. Richardson
Walt. Hutchinson
Andy Moore
Et. al.

48)

1/4 Cor 2223 zone
a B 0 20" N. 27 W. - 163 L
a W 0. 10" S. 38 E - 182 L



Iron Bar 1 1/2 x 1/4 x 36"

14" Fir S. 44° W. 115 Ft.

14" B. Oak N. 24° E. 476 Ft.

Renewed Corner
& Remarked

1727.33.8

19 36 2

700

1/4 Cor. Bet. Secs. 31 & 32 - T24-3

Maple 10" N60°W. 15 Lks.
" 8" S60°E. 11 "

40.50 Road to Bohema Mines course SW.

46.25 Calapooa Cr. 100 Lks wide c. SW.

66.00 Top of spur c. E.

80.00 Set post cor. to Secs. 29-30-31-32

A Fir 48" N.70°E. 48 Lks.
W. " 16" S.20°E. 32 "
A " 8" S.45°W. 20 "
" 12" N.62°W. 30 "

15 66
46 66
— 90 7.26
9.0
— 990

Over for:

T24-3

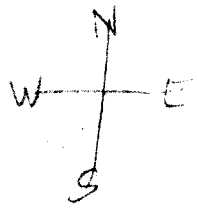
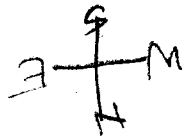
1/4 31|32

1/4 Cor. Bet. 31 & 32 T24S, R. 3 W
 I, Pipe 1/2" x 20"

Cedar 8" bears S, 66° E, 6 FT.
 Set from Old, 4" Cedar
 marked CS B.T. growing
 out of Maple that
 probably was old Original
 B.T.

7-8-38
 Frear
 Richardson
 Lawe
 Goff.
 82 67
 15-81
 47-71

48 25
 95-5
 79-65
 47 89
 22-11
 29-58
 70 01
 22-2
 72-79
 61-22



43-70	
4-42	
39 28	42-48
3-48	24 47
22 76	66-95
19	67-35
	15-83
	52 12
67-79	180-00
2-23	92-12
65 56	87 48
81-06	
17-22	
98-28	
180-00	
81 32	

T24S R3W

witnesses Ted Shellebarger
Rodney Leatherwood

Sec Cor for Secs 21, 22, 27 + 28

50 Renewed from orig B.T. 30" Hemlock N5°E 39 ft.
9" " " 36" " S70°E 52"

found pile of Rocks at corner

Set 4"x4" Fir Post for " from which new B.T.s are

10" Cedar S40°W 27.0 ft Mkd S28, T24S R3W CS B.T.

6" yew West 44.0 ft " S21 T24 " " "

May 24 1939

C.S. No. 15/11

1/4 Corner bet Secs 4 and 5 - Set Thurs June 8, 1939

No evidence of orig cor found - prob. never set
set by prop. dists bet NE and SE Corners Sec 5 1/2 letter
of 6/6/1939 from Jos. A. Ganong Cert. Engr. G.L.O.

Set 4x4" ^{for corner} Yew Post from which
36" Fir brs N 45° W 22. ft Marked 1/2 S 5 T 25 S R 3 W CS BT
18" " " S 26 1/2° E 12. ft " 1/2 S 4 " " "

Sec Cor. 4, 5, 8, 9 - June 7, 1939

{ Renewed or
{ Located from orig Cedar B.T. ^{5 10° E 24 links} which is now laying on ground,
the stump is still standing

Set squared 4x4" Laurel Post for Cor. fr. which
8" Fir brs. N 60° W. 23.5 ft. Mkd S 5 T 25 S R 3 W CS BT.
10" " " N 31° E 30.0 " (on slope) " S 4 " "
36" " " N 81° E 79.0 " (on slope) scribe marks, by some C.S., still
24" " " S 39° E 118.0 ft (on slope) show on blaze (no record of this tree)
40" " " South 78.0 ft (on slope) mkd S 9 T 25 S R 3 W CS BT
" S B " " " "

(marked low % logging operations
+ bark blaze + scribe
Same witnesses as above

1/4 Corner bet 8 and 9 June 13, 1939

Renewed from orig B.T. N 55° E 21 links which is in good shape
orig scribe marks are on bark

Set 4x4" Fir Post ^{for corner} and marked a new B.T.
14" Maple S 73° W. 40.0 ft (on slope) from 4x4" Fir Post
marked 1/2 S 8 T 25 S R 3 W CS BT

Same witnesses as above

Sec Corner on N Line township for Secs 32 + 33 T 24 S R 3 W June 6 1939
Renewed (Set) from orig B.Ts 16" Fir N 75° W 19 links + 24" Cedar S 60° E 9 links
5 + 4 T 25 S "

Set 4x4" Fir Post for Cor from which new B.Ts bear
46" Cedar N 10° E 26.0 ft Mkd S 33, T 24 S R 3 W CS BT and
15" Hemlock bears S 58° W 17.0 ft Mkd S 5 T 25 S R 3 W CS BT.

orig trees in these
quadrants
entirely gone