



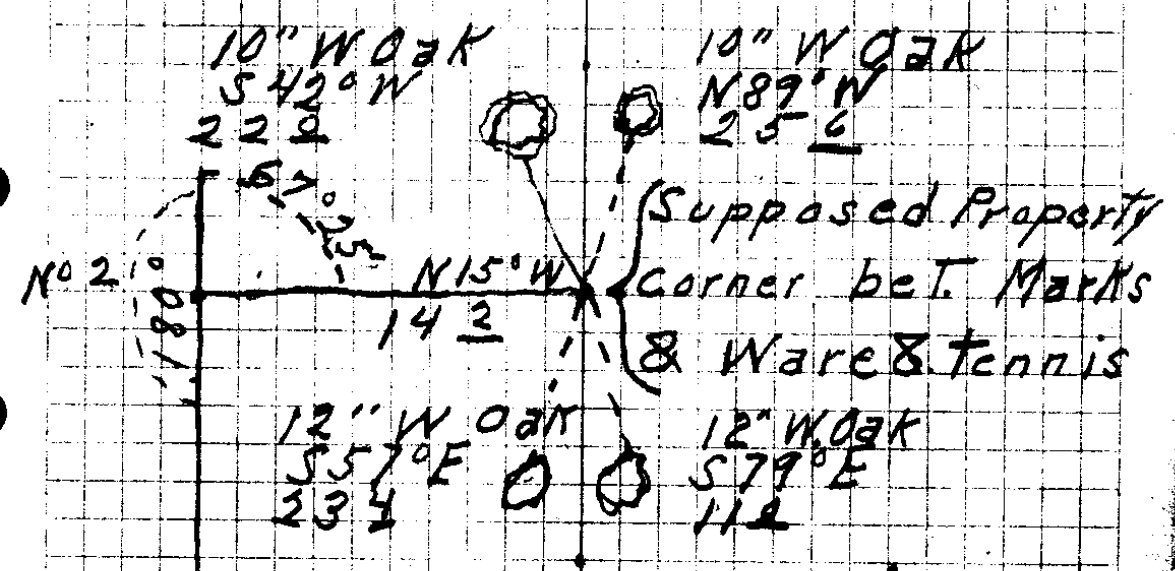


(I)

South Line Running West  
of D.L.C. 47 - 26 - 6  
For Deed Description

C.S. File No. 15/6

Sta	Dist	Left	Right	M.C.	C.C.
11 69 <sup>2</sup>	74 <sup>8</sup> 20°45'	8°57'		N89°W	N89-13W
10 117 <sup>6</sup>	119° 8°55'		12°04'	N80°W	N80-16W
9 322 <sup>4</sup>	300° 1°30'	23°	4°13'	West	S87-40W
8 165 <sup>0</sup>	165 <sup>5</sup> 4°15'		4°29'	N86°W	N88-07W
7 122 <sup>4</sup>	122 <sup>4</sup>	9°56'		West	S87-24W
6 121 <sup>5</sup>	121 <sup>5</sup>		6°28'	N81°W	N82-40W
5 152 <sup>1</sup>	152 <sup>1</sup>		0°26'	N88°W	N89-08W
4 204 <sup>2</sup>	204 <sup>2</sup>	4°28'		N87°W	N89-34W
3 124 <sup>8</sup>	124 <sup>8</sup>	1°31'		N84°W	N85-06W
2 401 <sup>0</sup>	401 <sup>0</sup>		9°59'	N83°W	N83-35W
I 213 <sup>7</sup>	215 <sup>6</sup> 1°25'			S88°W	S86-27W
/ South east cor. CL 47					Black oak



U.S. File No. 1516

No 1

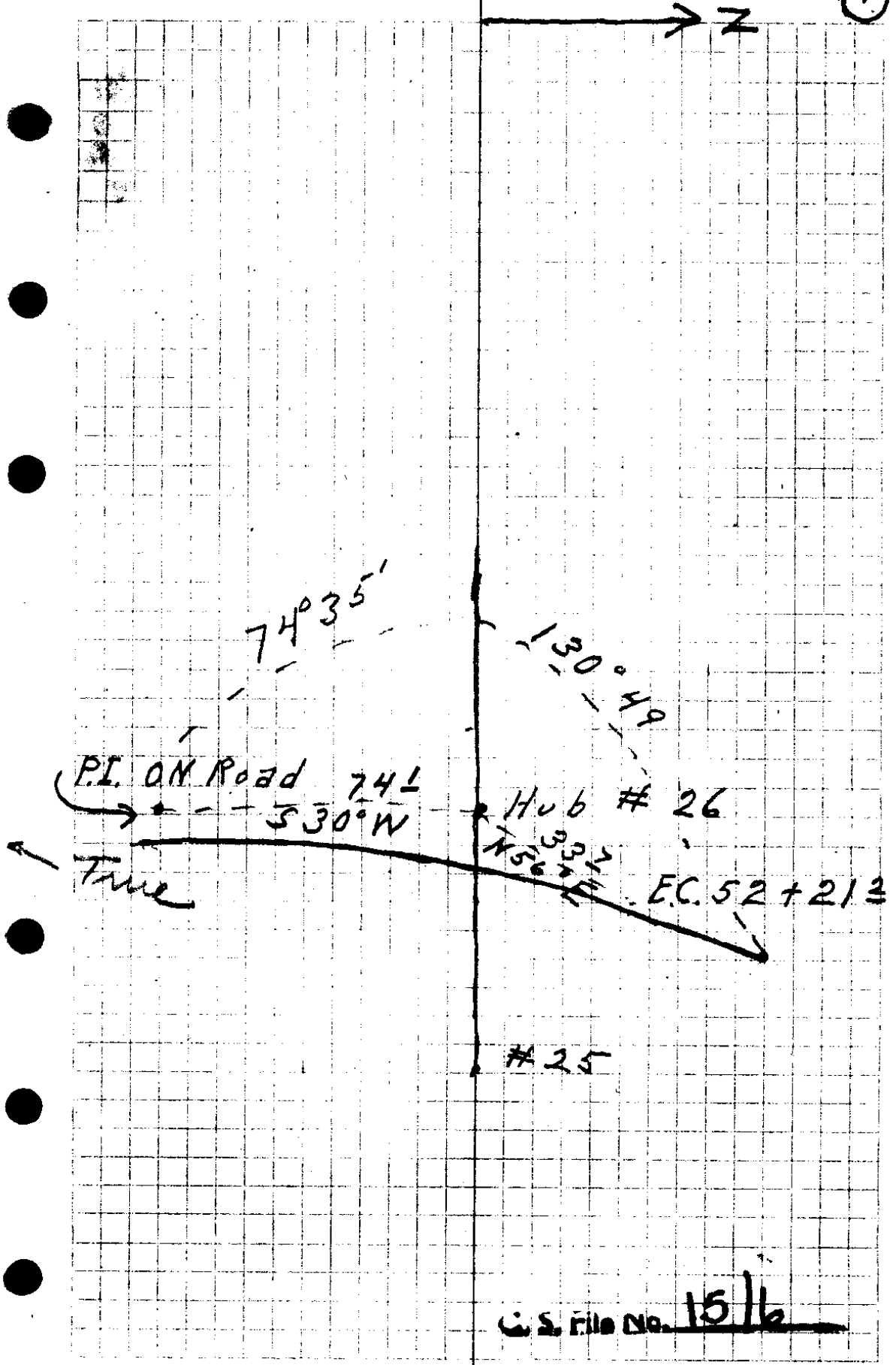
D.L.C. Cor 47 S.E. Cor.

Sta	Dist.	Left	Right	M.C.
22 1714	1748 -11°20'		4°32'	S 88½°W 1687-48 W ●
21 2078	2168 -20°12'	0°59'		N 89°W 587-40 W ✓
20 2616	2863 -23°56'		0°02'	S 86°W 88-39 W
19 2823	3000 -21°0'	2 1/2	1°32'	S 86°W 888-37 W ●
18 596	596	4°18'		S 86°W 587-0.5 W ✓
17 1372	1511 +24°45'		4°50'	N 89°W N 88-37 W
16 1942	2037 +17°45'	5°47'		S 88¾°W 586-33 W
15 2186	2292 +17°12'		5°05'	N 86°W N 87-40 W ●
14 1688	1748 15°15'	3°14'		S 87°W 587-1.5 W
13 1375	1394 9°25'	7°16'		N 88½°W N 89-31 W
12 667	699 17°21'		6°58'	N 80°W N 82-1.5 W ●
11				N 89-1.3 W

3

C.S. File No. 15/6

Sta	Dist	Left	Right	M.C.
B		Pot		
	89 <sup>?</sup>	1		
A	Pot			
	50 <sup>?</sup>	inter	40-68	N89-48E.
Cor				
-	62 <sup>6</sup>	35-38	L	S49W S48-50W
30				
80 <sup>?</sup>	80 <sup>?</sup>	13°09'		S85½W S84-28W
29				
242 <sup>o</sup>	242 <sup>o</sup>	11°25'		N80°W N82-23W
28				
183 <sup>o</sup>	183 <sup>o</sup>		79°14'	N69½°W N70-58W
P.I. 27				
74 <sup>l</sup>	74 <sup>l</sup>	74°35'		S30W S29-48W
26				
95 <sup>?</sup>	99 <sup>o</sup>		14°46'	N77°W N75-37W
25				
126 <sup>8</sup>	157 <sup>o</sup>		22°31'	N89°W S89-37W
24				
149 <sup>o</sup>	155 <sup>o</sup>	21°15'		S64°W S67-06W
23				
43 <sup>3</sup>	48 <sup>o</sup>	3°51'		West S88-21W
22				
				N87-48W

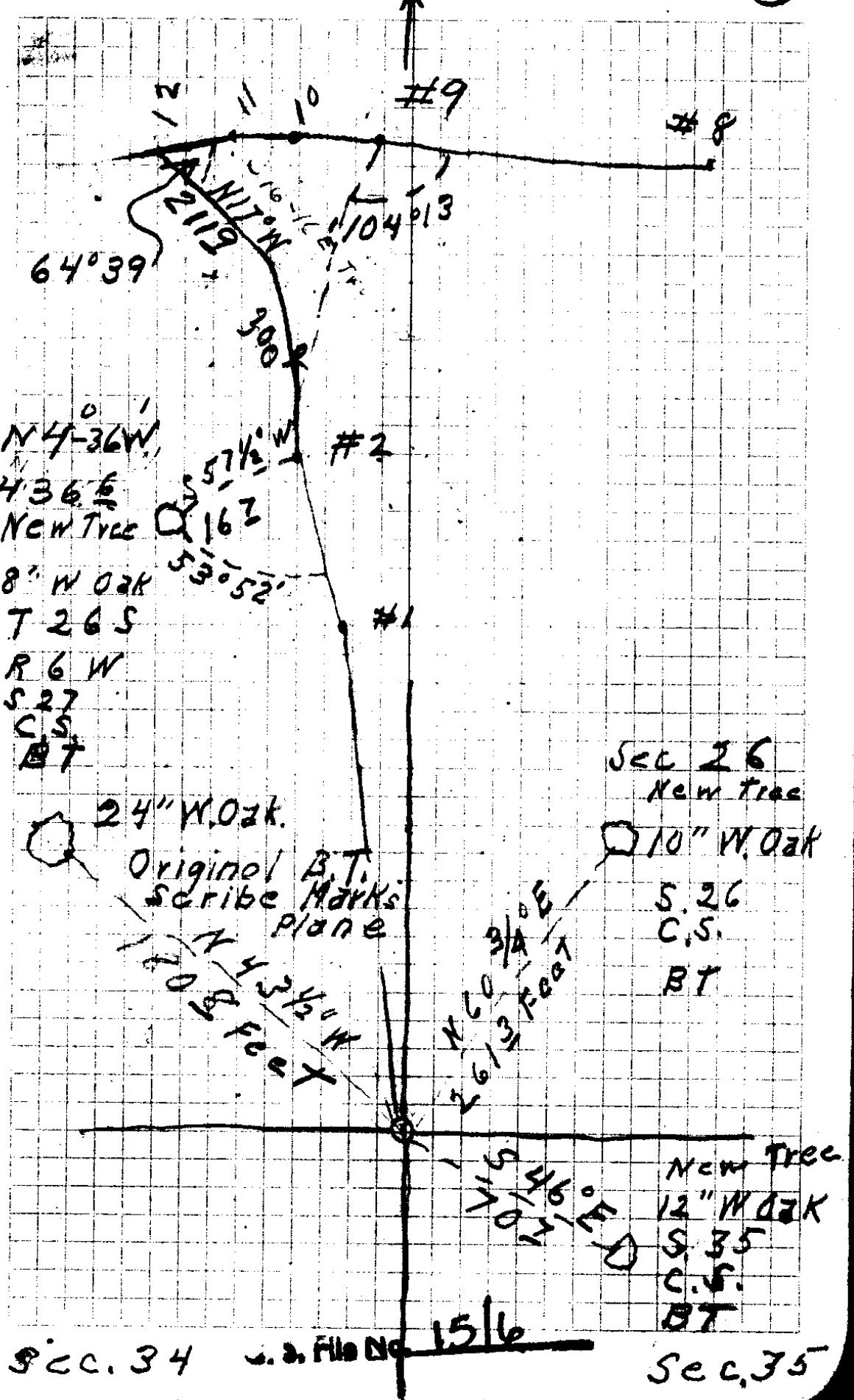


S. File No. 15/6

Tie Line From Sec. Cor.

Sta Dist. Left Right M.C.

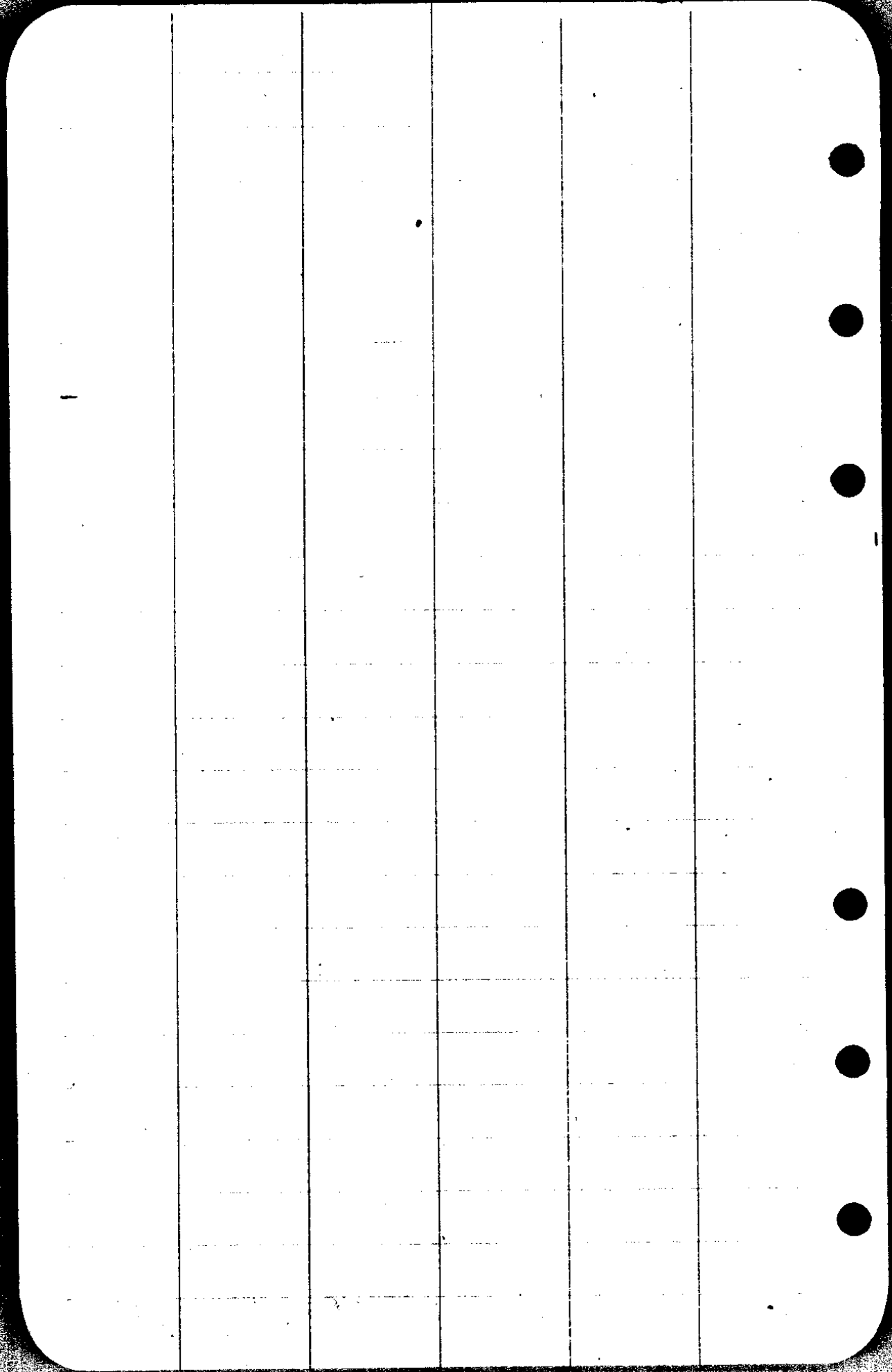
#12				
511 <sup>2</sup>	511 <sup>2</sup>	19°29'		N14°W N17-36W
2				
65 <sup>2</sup>	65 <sup>2</sup>		5'25	N4°E N1-53'E
1				
379 <sup>6</sup>	379 <sup>6</sup>			N2°15'W N3-32W
Sec.	26-27-34-35			T.26-R.6W.



Sec. 34

a. a. File No. 15/6

Sec. 35





Sta Dist Left Right M.C.  
 Tie Line From 1/4 cor.

#26

P.I. 27

213<sup>2</sup>

214<sup>1</sup>  
5°24'

11°35'

30°29' N 30°E N29-48E

North N0-41W

3

295<sup>5</sup>

296<sup>3</sup>  
4°05'

19°25'

N10°E N10-54E

2

322<sup>0</sup>

300<sup>0</sup>  
8°31'

74°34' N32°E N30-19E

1

484

505  
16°54'

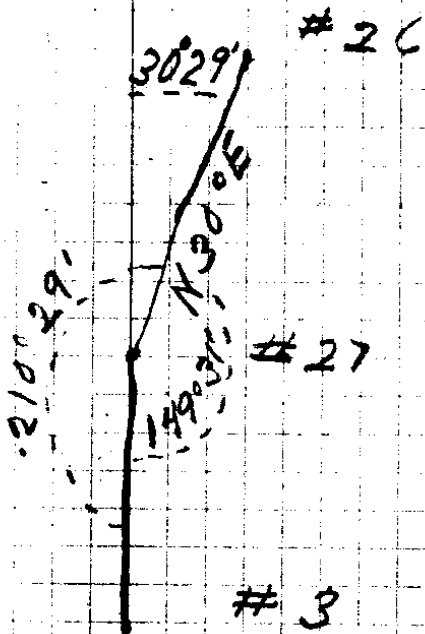
—

—

N42 1/4°W N44-15W

1/4 cor.

Tie Line From  $\frac{1}{4}$  Cor. (7)



$\frac{1}{4}$  Cor. 27-34 T26SR6W

File No. 1516

Sta Dist. Left Right MC.

July 18-37

Watch  
15' slow



Time

Ver Ang

Hor Ang.

3-6-30

46°14'

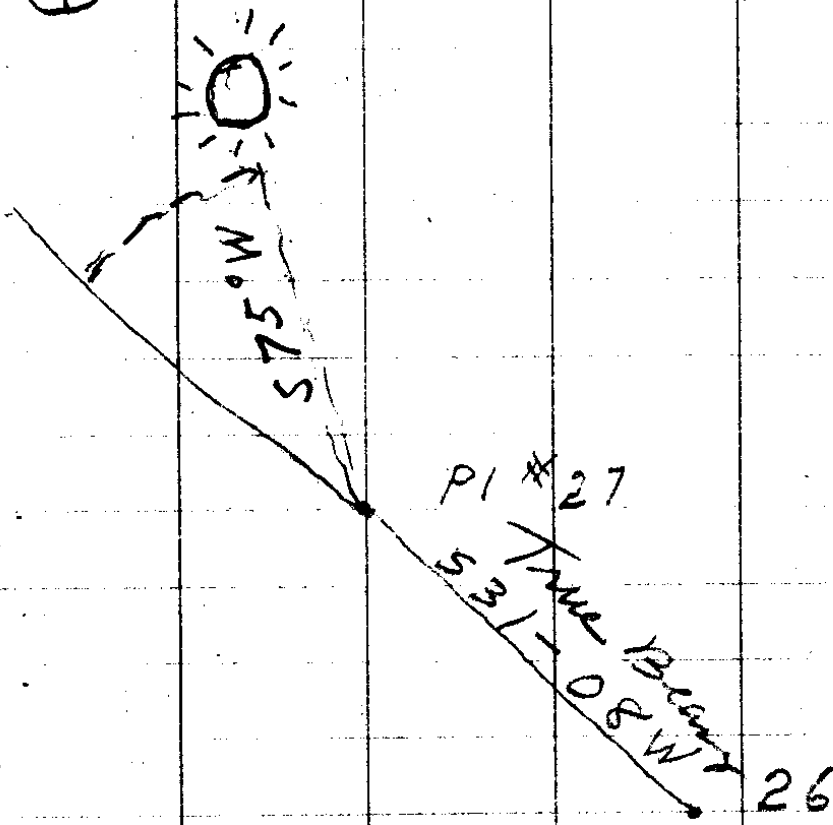
43°46'

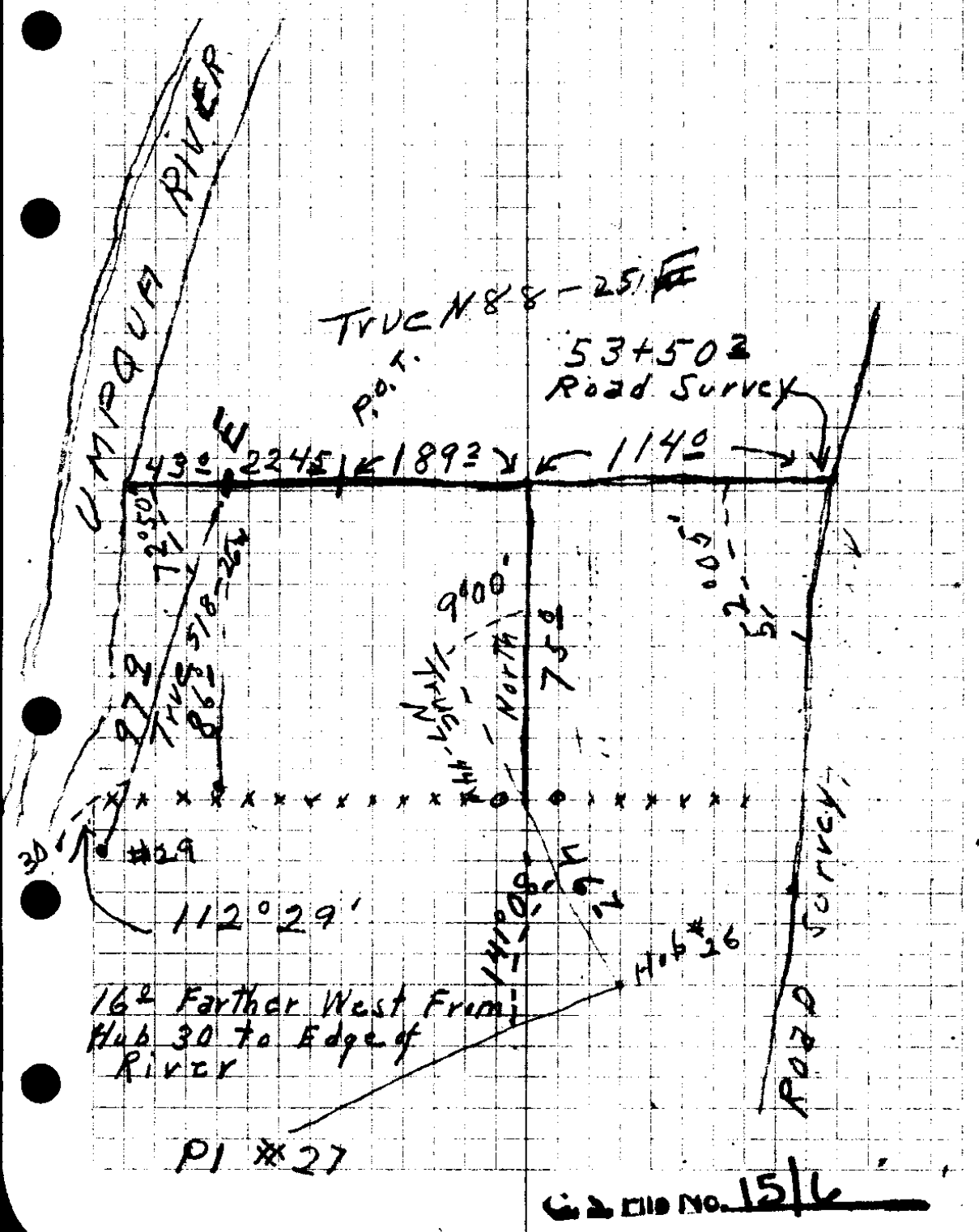
3-7-45

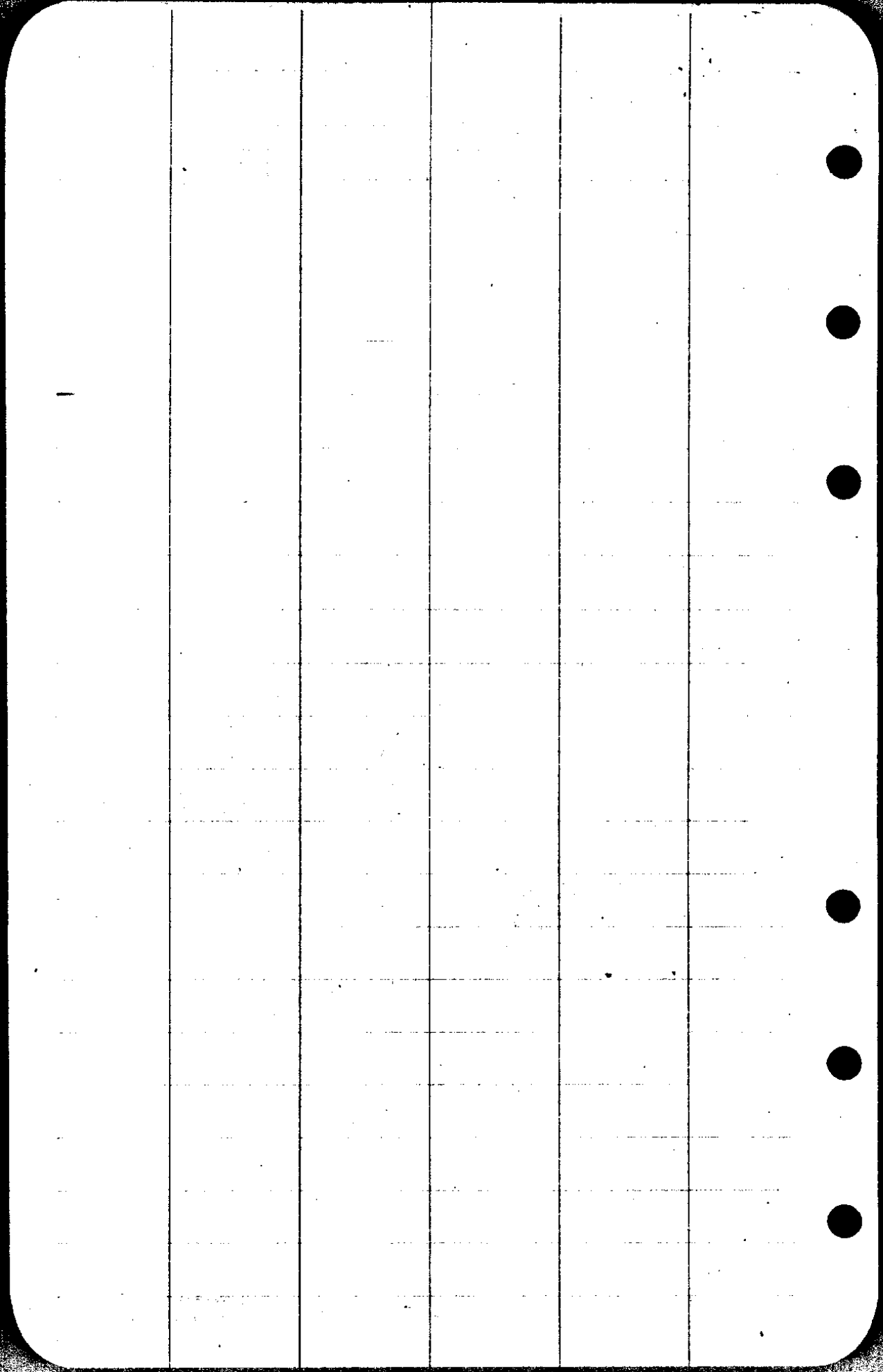
46°40'

44°48'

NO  
USED







JULY 21-1937

Needle 578-25E

(9)

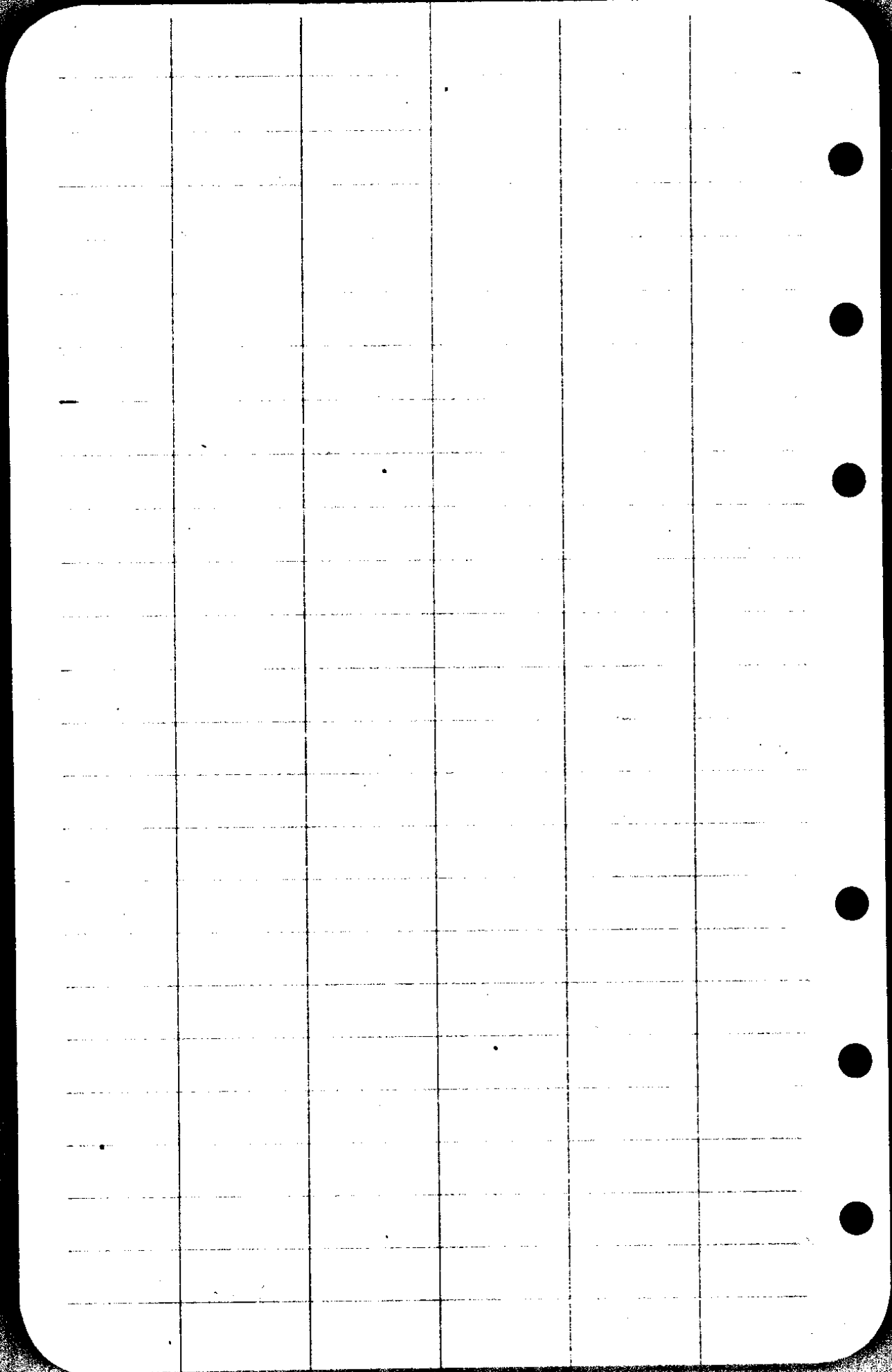
Time	Hor	Ver	Needle
8-45 AM	70-25	40-29	578-25E
8-49	70-42	40-30	578-25E
	70-26	40-58	578-25E

Used.

Q

Time	Hor	Ver	Needle
8-50 AM	71-22	41-39	577-55E

Exam no. 15/1



10.

Crate Fisher  
Tanner  
set from chr  
Robert B.O.  
Marked C.S. Ch. 4

o SW in  
3/4" x 4" bolt  
of head  
8" Red Fir

Marked CSC 47

BT

Bea N 88-30E 422 ft

~~2. 118 No. 15/16~~

Recorded

Δ27

PI

70-50

Δ26

26 <sup>3</sup> 49-13 int N44-30W

1/2 x 24" Bolt

95  
9

1097

589E

1/2 x 1" Bolt

1706

ΔC

POT

173 <sup>50</sup>

ΔB

POT

