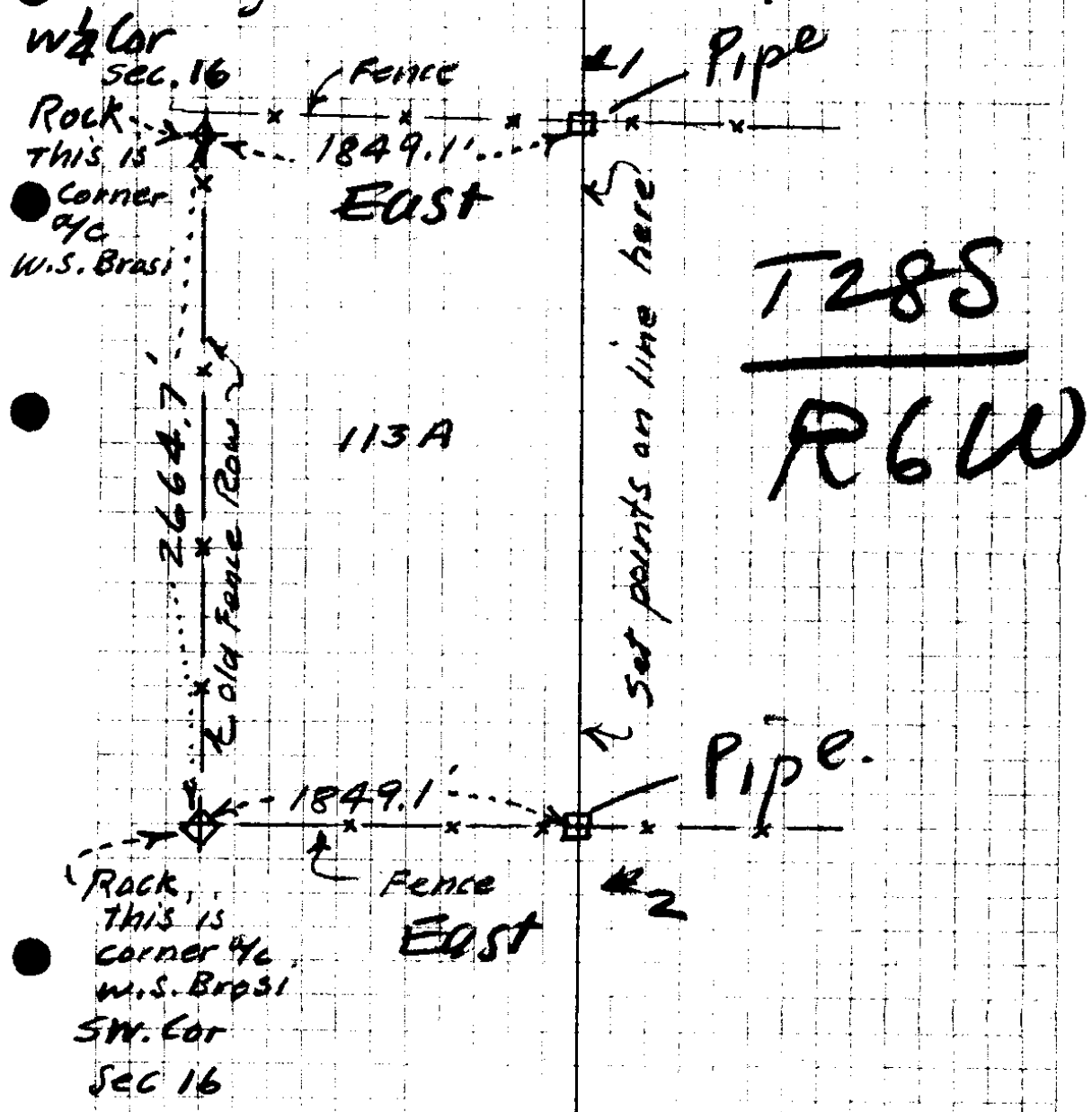


NOV 22, 1935

A Boyer,
Harry Bushnell
IVAN Brozi
Roy Burks.



$$43560 \times 113A = 4922280 \div 2661.8 = 1849.1$$

= E. + W. dist for 113 Acres

CS 15/2

Survey for W. S. Brozi.

This survey made to determine the distance E. from SW cor + W $\frac{1}{4}$ cor Sec 16 $28/6W$ to secure 113 Acres on the W. side of the S² Sec 16. $28/6$ Used 300' tape and took slope measurements.

Also ran line bet points #1 and #2 for E. Line of this 113 Ac.

N on W Line

8+00

9+18.6 125' 18°-25' = 118.6 = 918.6

154. 11°-10' = 151.1 = 1072.6

80 00 1152.6

300' 12° 2934

1446.0

300 00

1746.0

166

1912'

274

2186

250 12°-45' 243.7

2429.7

117' 00

2546.7

58 00

~~2601.7~~

60' 00

2661.8

~~2664.7~~

Dist E = 849.1

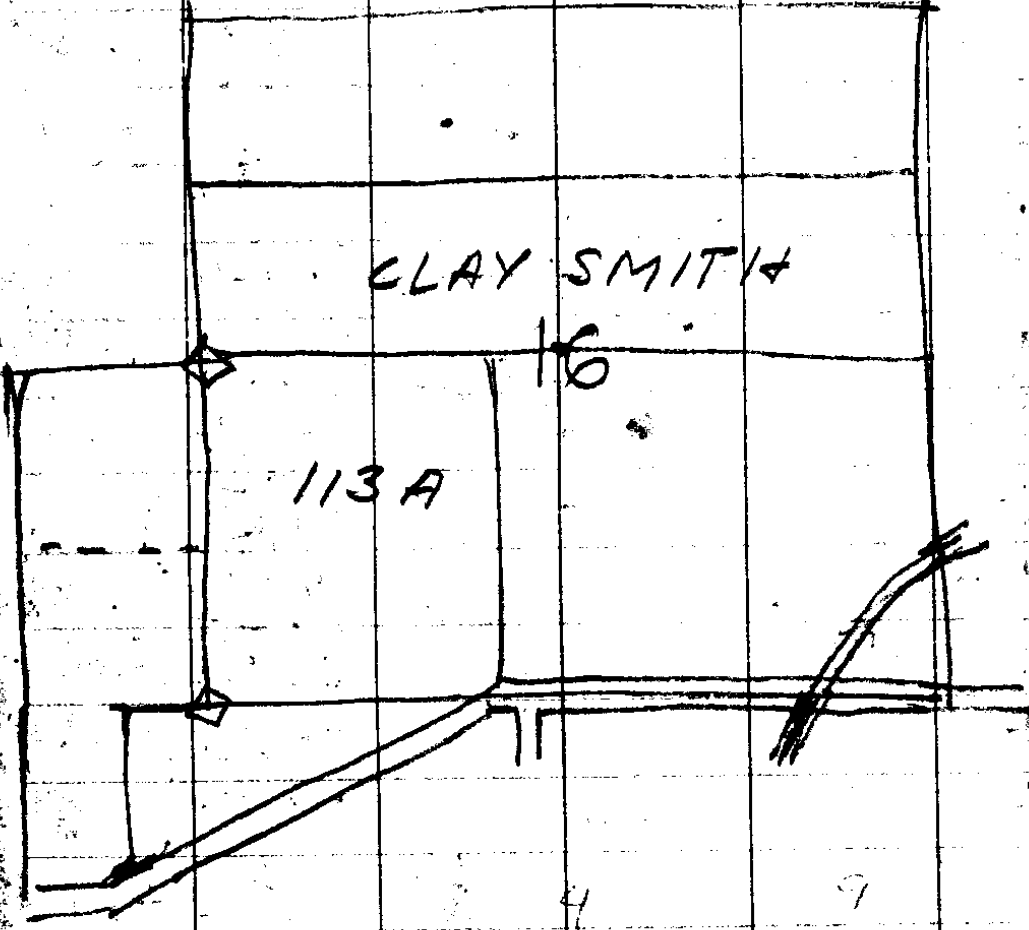
East on N Line

300'	15°	966 ₃₀₀	289.8	
208'	13°	974	222.1	511.9
118	00			624.9
252	16	961	242.1	872.0
250	18°-15'	950	227.5	1109.5
300	18°-15'	950	285	1394.5
266	17°-35'	953	253.5	1648.0
166	00		166	1814
35			35	1849 ✓

N on E Line

300 - 9°30'	295.5	1103.7	220.8	3°-45' = 270.
142.1	6°-30'	257.3	15+80.3	
300	5°-00'	298.8	300 - 4°-50' = 298.8	
300	13°-45'	971 = 291.3	18+79.1	
77	00	77	63 Flat	
			194.2	
			63	
			20+0.5	
			300 - 7°-30' = 297	
			23+0.2	
			194 - 7°-30' = 192.2	

728 S R6W



43560	2661.8	4922880	184
113		26618	
130680		226048	
43560		212944	
43560	26618	130960	
4922280	18	106472	
	212944	244880	