

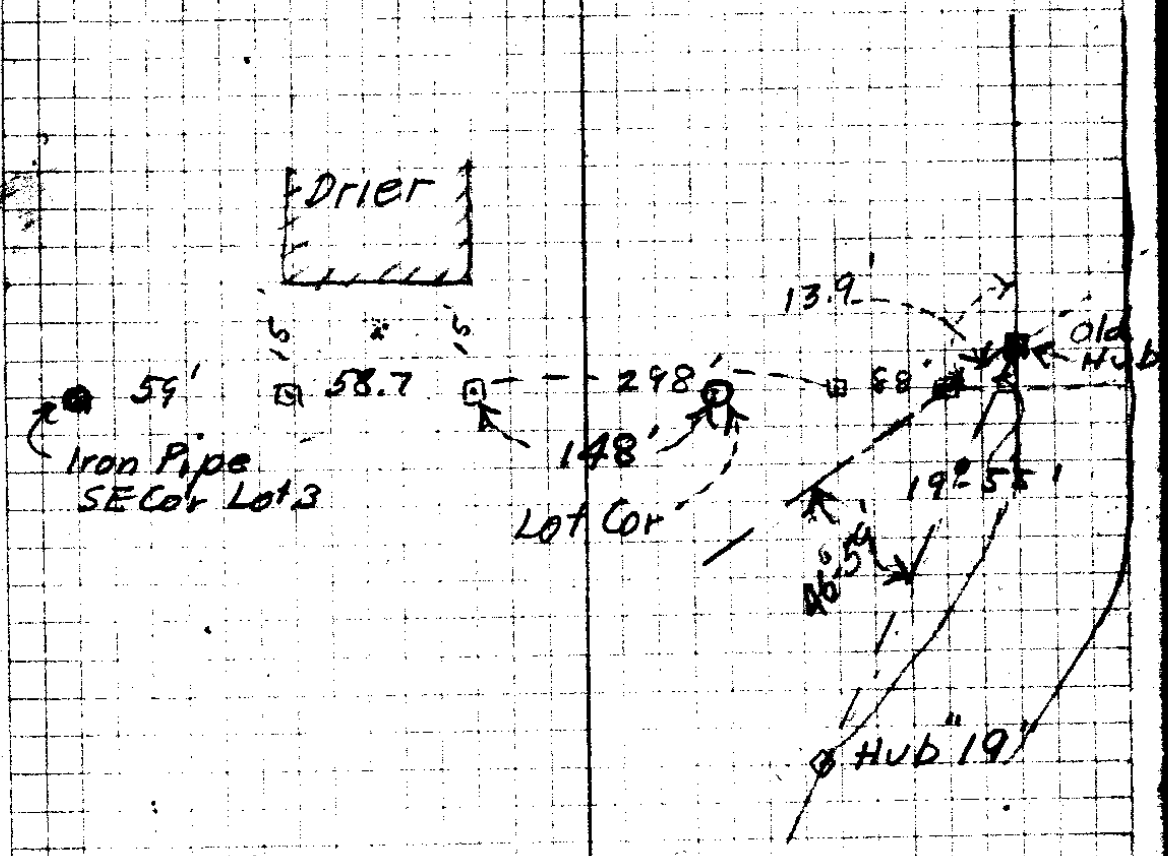
Apr-7-1931-12-63

Eppstein
Boyer

①

Hoover Survey at Winston.

Set Hub 15'S of SE Cor of Post
 on Leanto for Dryer + 15'S of SW Cor
 paralleling dryer on south side
 (set 3/4 pipe at 59' W. of SW Cor
 Dryer on this same line
 58.7' bet SE Cor pt. (SE of Dryer 15')
 9th SW Cor Stake.
 298' From hub 15'S of SE Cor of
 Dryer to hub A - 88' from
 hub A to W Side Pac Hy at hub B
 (13.9' from hub B to old Hub on
 W Side Hy



298
88
386

59
58.7
298
88
503.7

C.S. No. 4103

2

23-49
160

Dist's N of 1/4 Cor on Sec Line

- 356.3' - } 10 offset pt.
133.9'

383.3
- 333.9

49.4
- 22.4

27.0

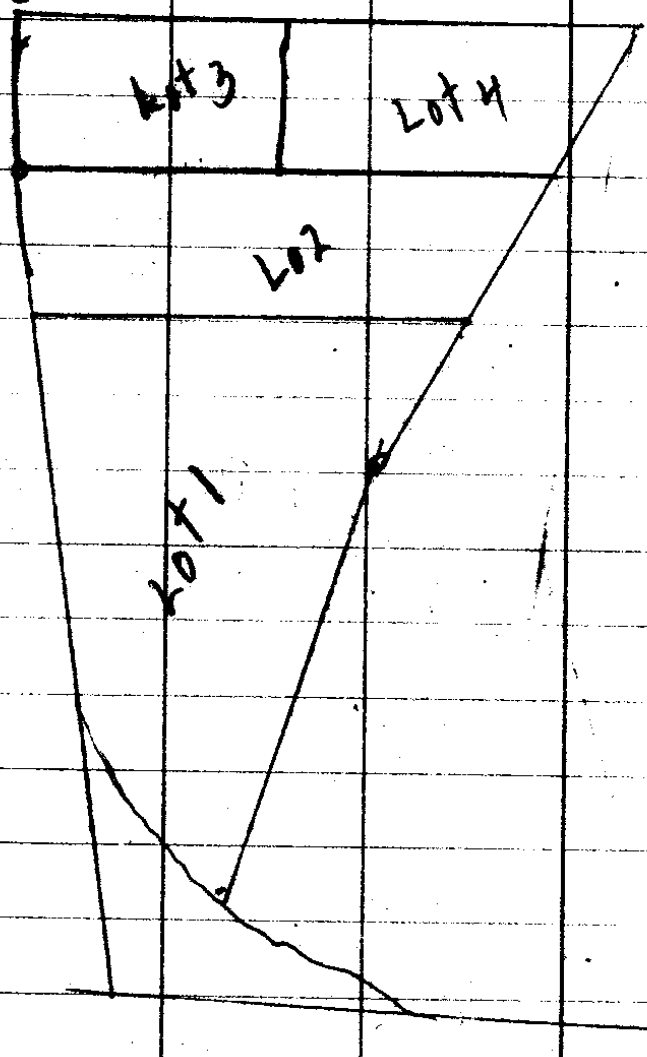
127.8

618.0

2668.8
1334.4

1155.6
178.8

1334.4



Apr 8, 1931

Eppstein
Richardson
Bayer
Ammer?

14.1
242.7
256.6 (3)

Dr Hoover Survey

2668.8' - from NW Cor 15
South to SW Cor Sec 15

SW Cor
Prop 1/2

1155.6

CB N1°08'W 1/4 Cor.
M.B. No 30'W Sec 16

North
→

Pipe on
R. Bank

Lot Cor
SW Cor
Block A

178.0

618

Sec 15

119°12'

Lot 5

Lot Cor

443.5

Pipe

90°00'

Lot 4

Lot Cor

381.6

90°00'

Lot 3

343.3

DRIER

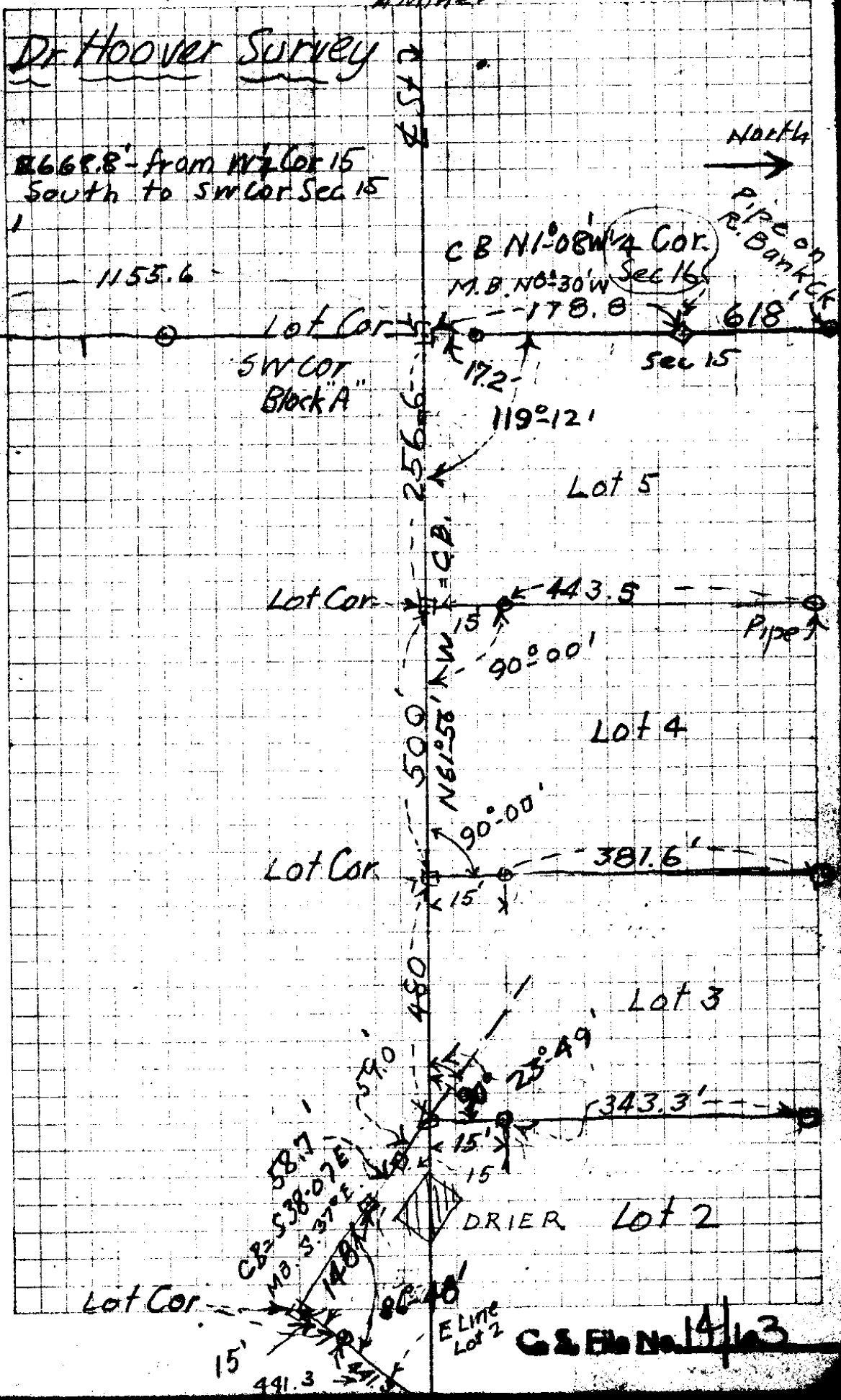
Lot 2

Lot Cor

441.3

ELINE
Lot 2

C.S. File No. 14/163



April 9, 1931-

Dr. Hoover Survey

(7)

	Hor.	Vert.	Time
up ret Q #	27°46'	34°29'	9.04
up Q #	27°00'	34°35'	9.04½
Q #	26°10'	35°42'	9-08
	26°52'	35°14'	9-05
Q #	26°03'	35°13'	9-08½
Q #	27°20'	35°20'	9-05½

Needle - S 64°-20' E

	Hor	Vert	Time
Q	26°11'	35°36'	9-11
Q	26°24'	35°41'	9-11½
Q	25°17'	36°21'	9-12
Q	25°49'	36°25'	9-12½

Needle S 62°-30' E

on Line 15'S ⁹ng parallel to S side of Drier.

Lat 43°-08'

Long 123°-25'

⑧ Dr Hoover Subdiv. of Winston
 Sta Dist L M.B. (Byler
Eppstein
Richardson)

315.6' S54½°E S55-10°E

154.95.1 2°-27' R+

481.7' S57°-37'E

11+13.4 6°-39' R+

352.7 S58°E S58-16'E

7+60.7 169.3 6°-20' L+ S51°E S51°-56'E

5+91.4 591.4' 11°-22' L 15' L to Riv Bank

0+0 22°-17' L S40°E S40-34'E 20' L to Riv Bank

⑩ Dr Hoover Subdivision at Winston
Sta Dist L M.B.

24+82.9

286.8

S 37° W S 36°^{13'}-03' W

21+96.1
2 86.5

85°-03' RT S 37° W S 36°^{13'}-03' W

195.7

S 48° E S 47°-E
S 48-50 E

200.0.4
19 8.7

13°-23' RT
26-46

90.4'

S 61°^{13'} E S 62°-23' E

19+10.07
9.1 93.4
15+7.1

7°-13' LT
14-26

Apr 9, 1931
Eppstein
Richardson
Boyer.

11

Note this is EC
of curve = N
End of Curve -
30' W & HY
curve run in firm S.

OPP.
EC, P.C. Hwy 24+82.9
30' W.

Old Hub - 30' W
& Bridge

21+96.1

85° 03'
M.B.S. 370 W
C.P.S. 36 - 08 W
15.5
20+00.4
Pipe NE COR Lot 1

Lot 1
20+00.4
W Line Lot 2
Lot 2
67° 13'

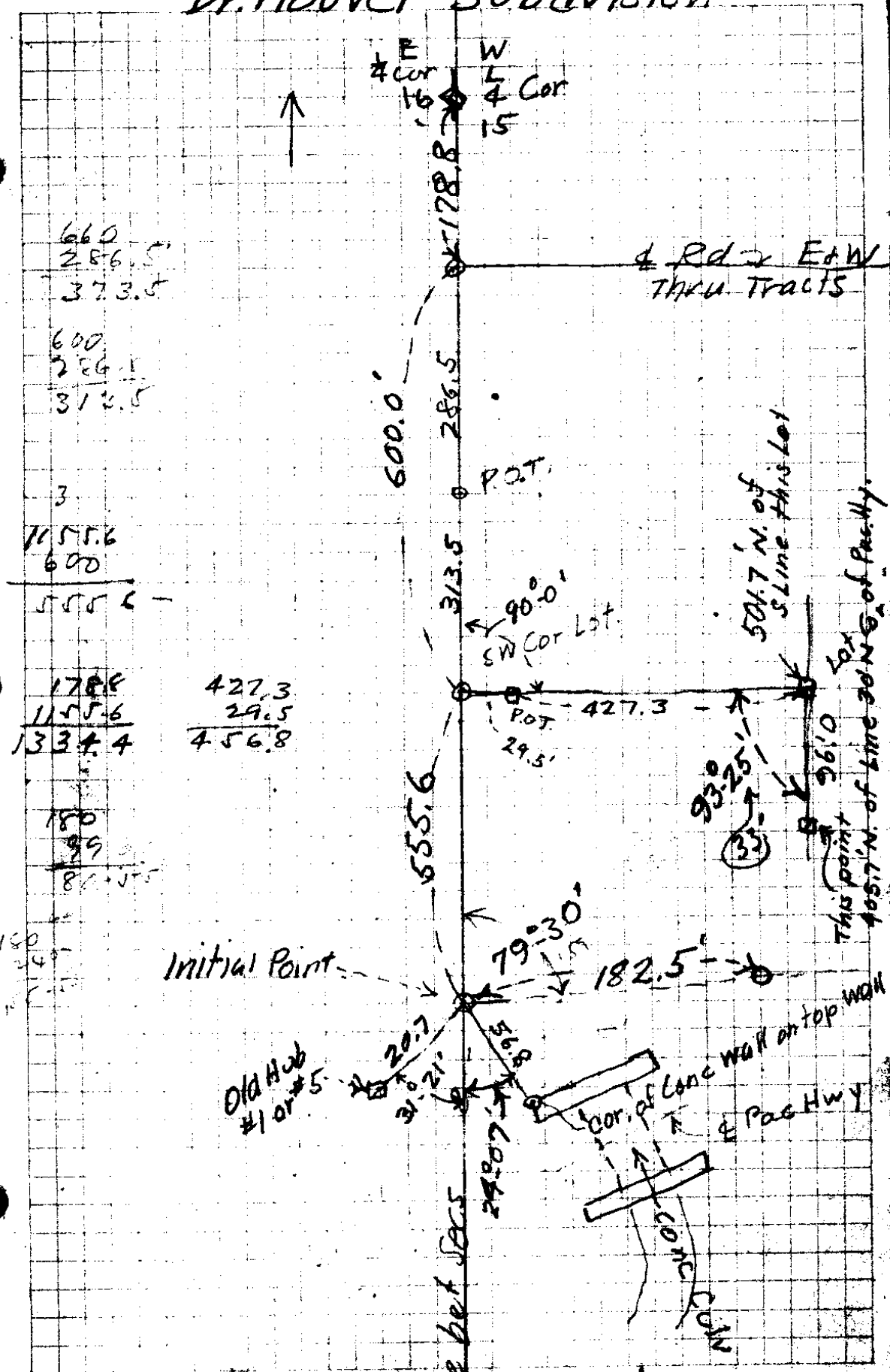
19+10.1

C.S. File No. 14/63

Apr 9, 1981

Dr. Hoover Subdivision

12



File No. 14/1e3

Sta Dist M.B.

3
~~12+12.4~~
12+34.7

394.0
~~391.7~~ N86E

8+40.7

350.0'

4+90.7

N86E

3 39

228.0'
~~230.0~~

N86E

2+62.7

2°-25' Rt

2 28

80.2

1+82.5

4°-37' Rt

80.2

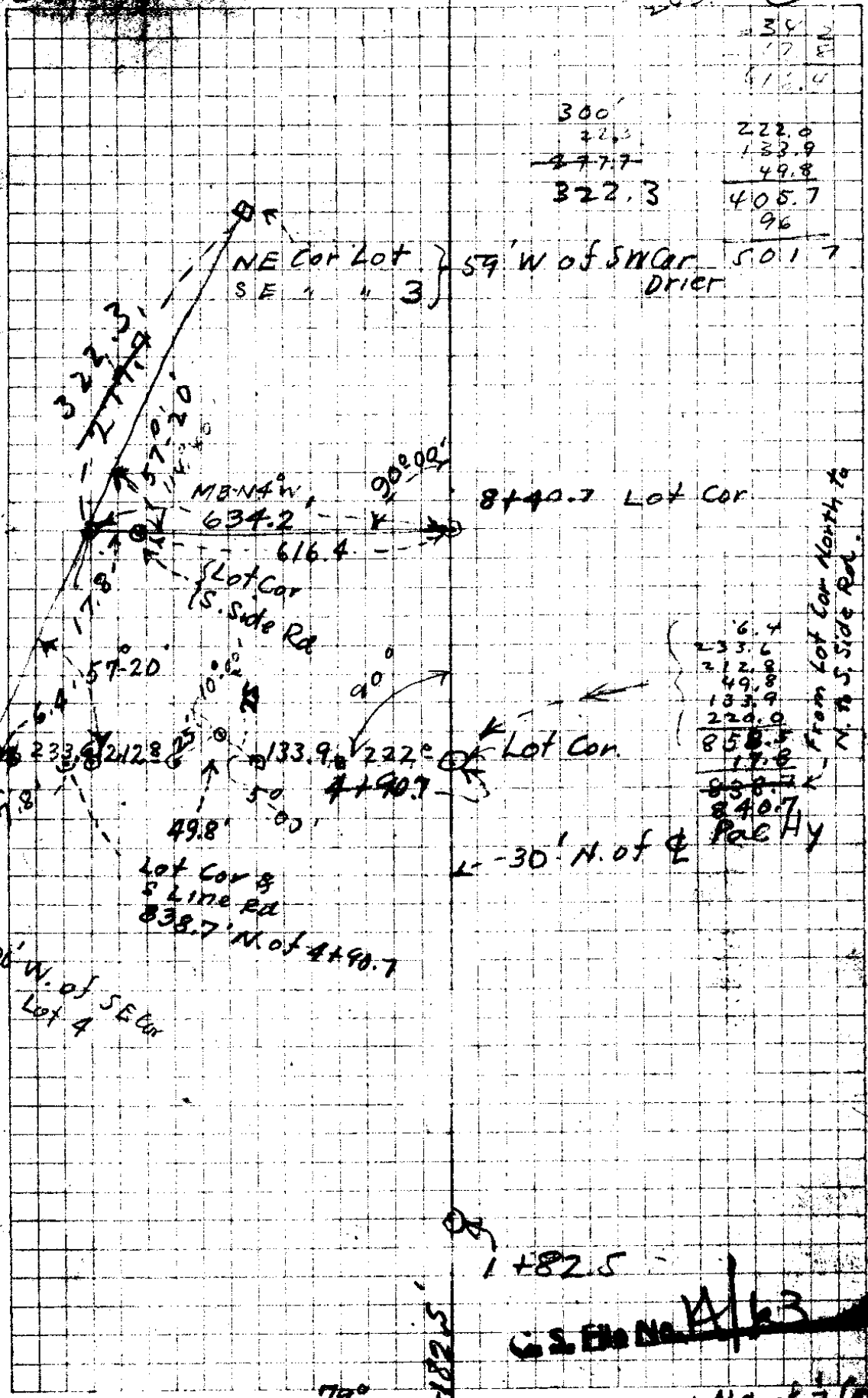
182.5'

8-09
9-10
13-46

0+0 "Initial Pt"

233.6
200.0

14



300'
22.3
477.7
322.3

30
17
11.4
228.0
133.9
49.8
405.7
96

6.4
233.6
212.8
49.8
133.9
228.0
858.5
17.8
838.7
840.7

From Lot Cor North to N. of S. Side Rd.

~~W.S. File No. 1163~~

SK 15

DIST

13+31

21+47

16+83 EC 24°-33'

15+84.7 22°-24'

50.0'

15+34.7 19°-12'

50.0'

S85-19W

14+84.7 16°-00'

50.0'

14+34.7 12°-48' 12°-48' curve L

18.7

L 383.6'

14+169 11°-36'

Δ = 49°-06'

Lot Cor N. Side Rd

13+99.2 31.3' 10°-27'

T 204.5

13+84.7 9°-36'

L.C. 372.0

Lot Cor S. Side Rd

50.0

13+34.7 6°-24'

50.0

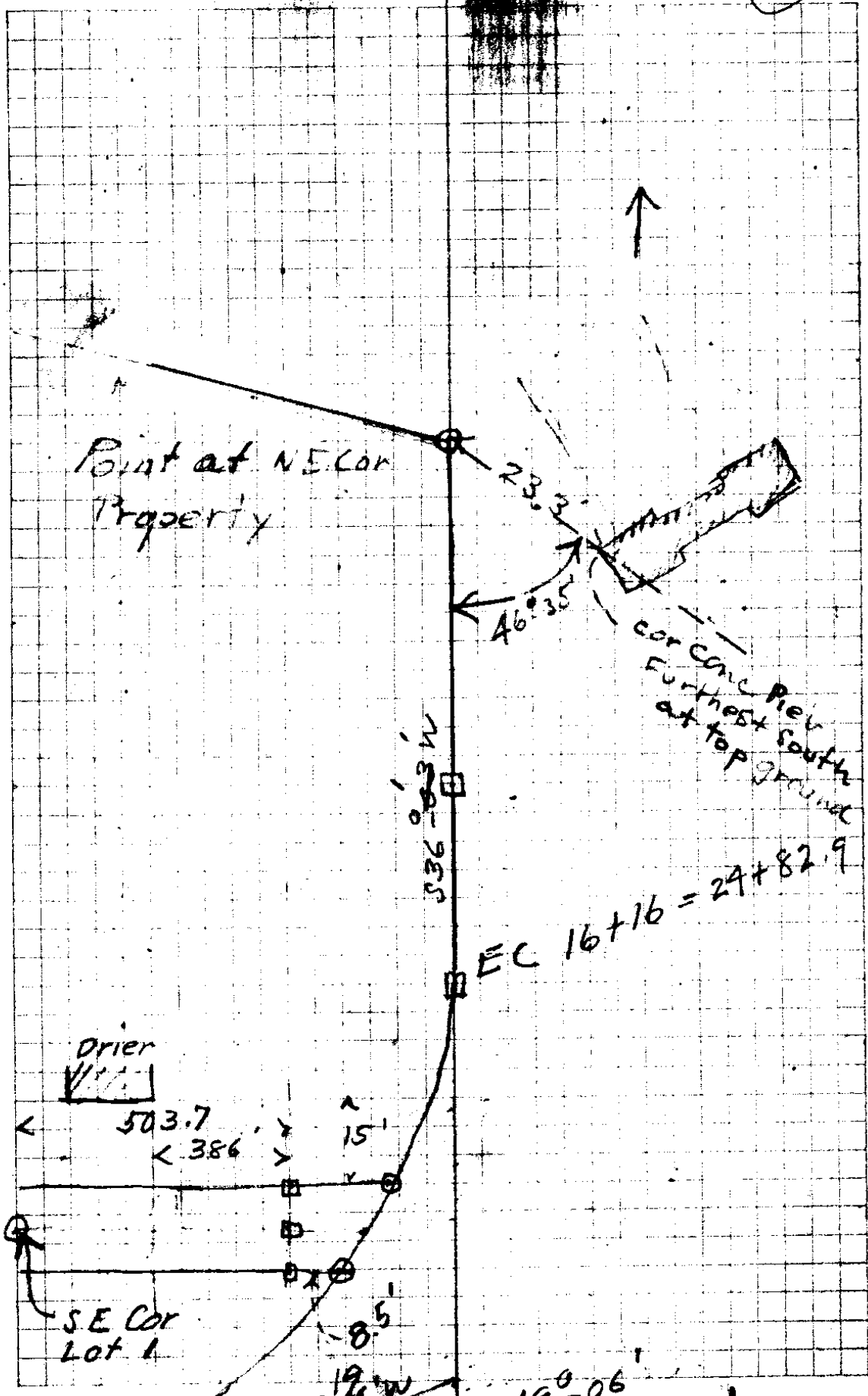
12+84.7 3°-12'

50.0

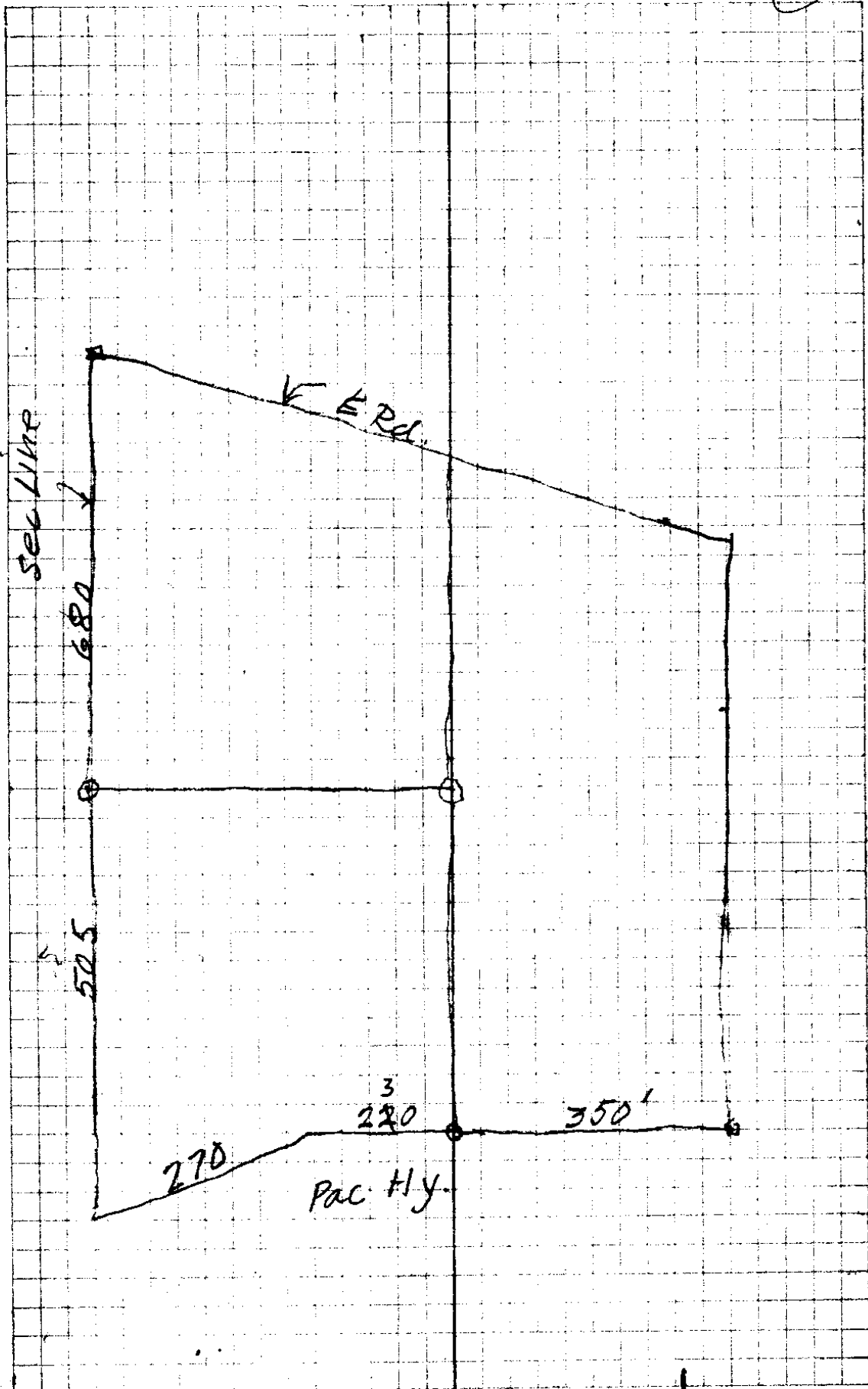
12+34.7 12+82+ BC

3.83

2.3 less ?

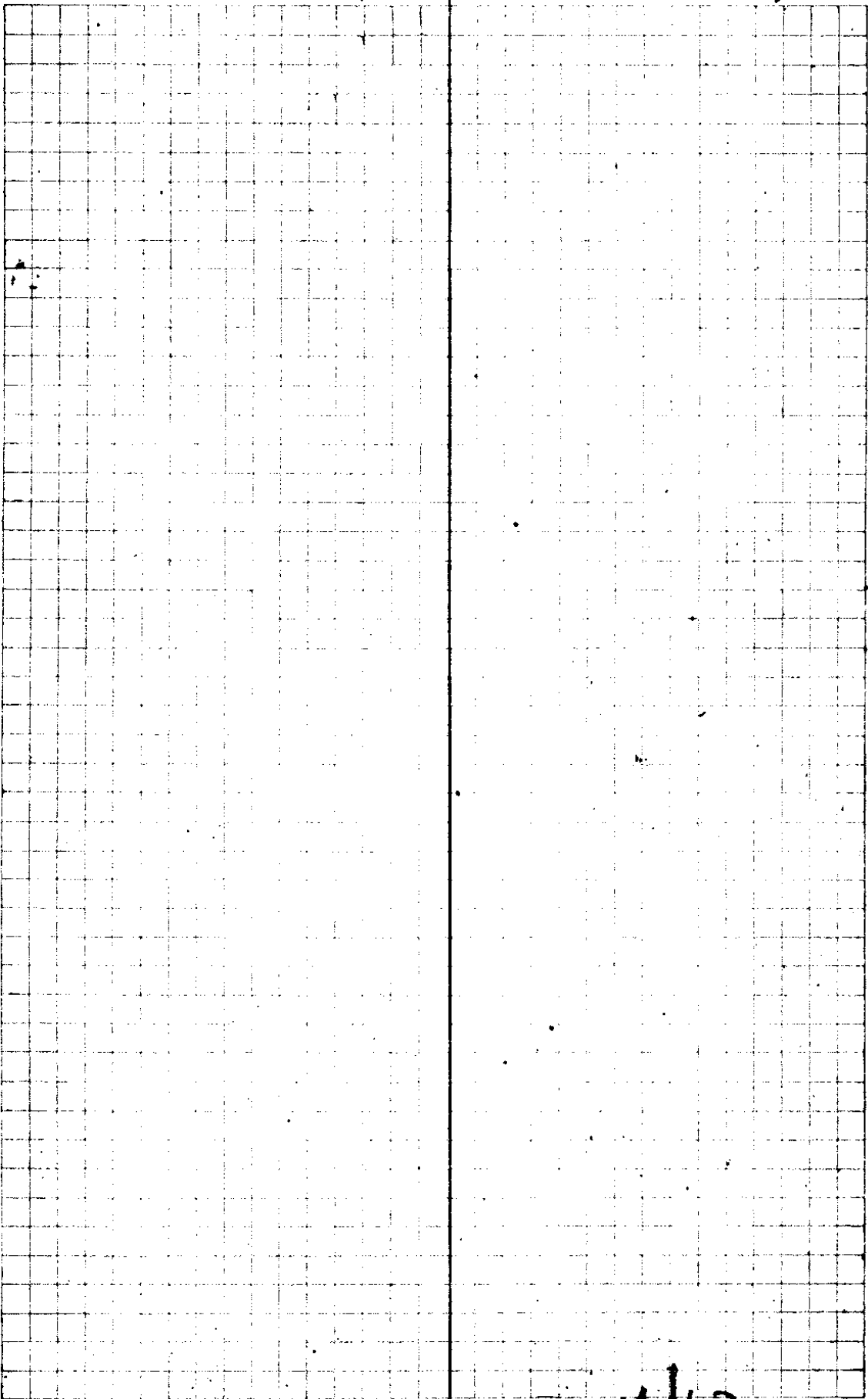


C.S. File No. 14/63



C.S. No. 14/103

19.



21

A 11

239¹ 00

North

A 70

153² 00

North

A 9

14⁰⁰
126⁰ 122³
00

North

A 8

347³ 90°R

North N

A 7

22⁰ 90°L

West W

A 6

00

North

375³

N

A 5 due = V₁₄

82 90R

North N

A 4

35 90R

East E

A 3

1165⁰ 90L

North N

A 2

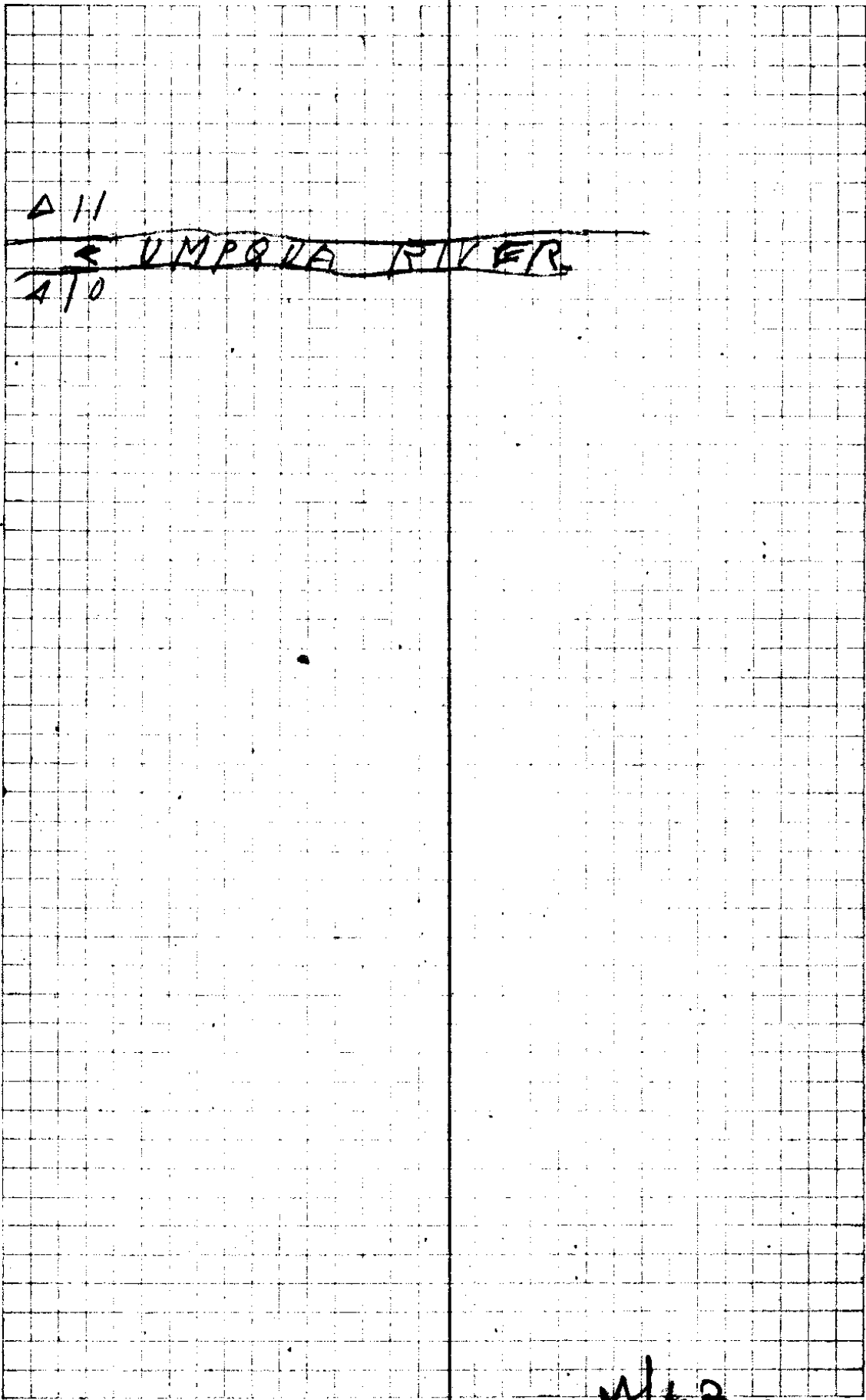
35⁰ 90 R

West W

-16-30
con 73⁰

70

North N

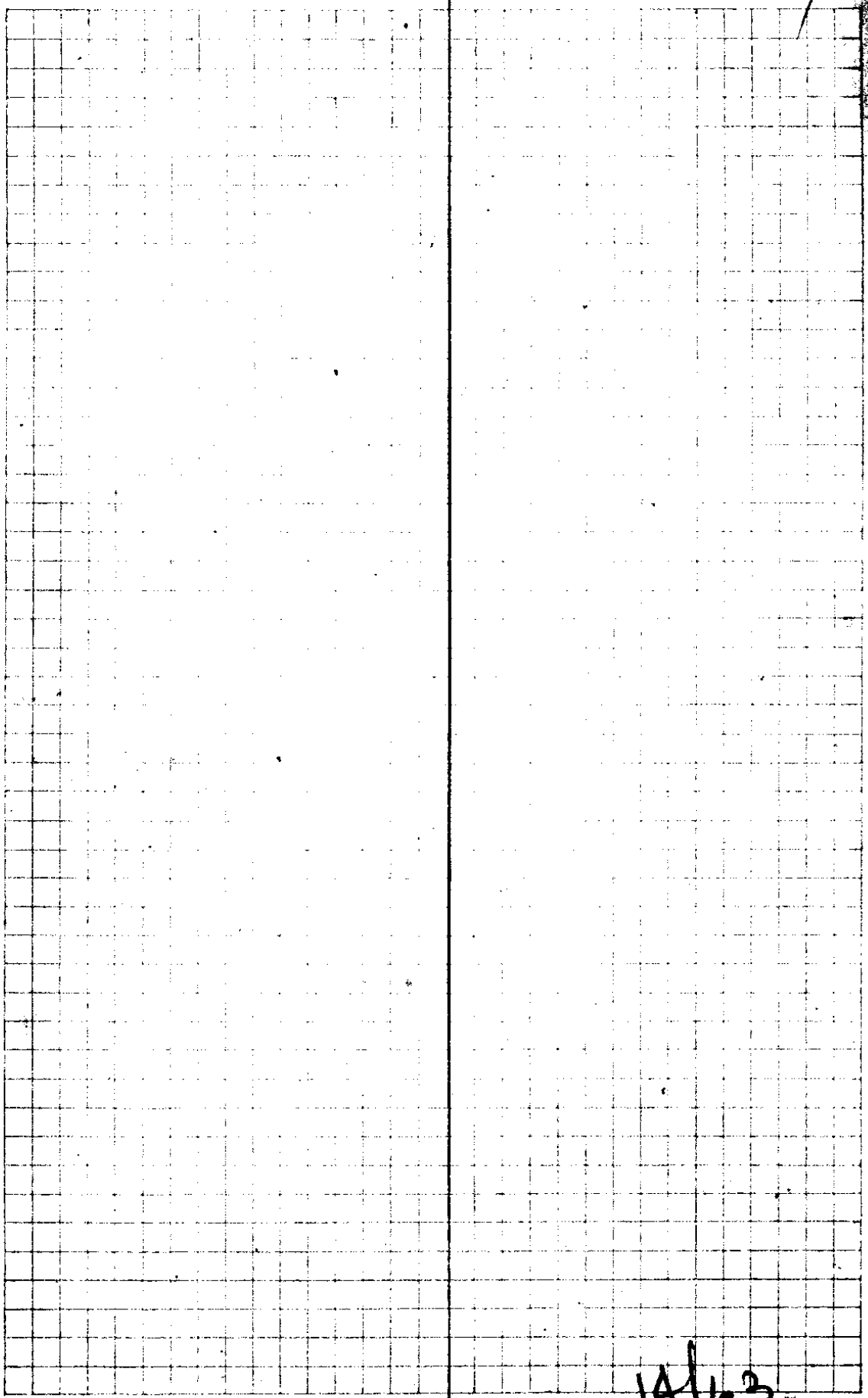


A H

UIMPQUA RIVER

A I O

24



C.S. File No. 14/163

25					
Δ110	666 $\frac{1}{2}$	2-31 L 5-02 L	✓	555-30E	555-35E
Δ110	228 $\frac{5}{8}$	10 ⁰ -20 R 20 40	?	553-E	552-04 E
Δ10000/hine	121 $\frac{1}{4}$	14-17 L 28-34 L		562-30E	562-24E
Δ9	184 $\frac{1}{2}$	9-19 18-38 L		548 E	548-07E
Δ8	465 $\frac{0}{2}$	17-22 L 34 44		539 E	538-48E
Δ7	69 $\frac{5}{8}$	25-54 51-48 R		521-30E	521-26E
Δ6	112 $\frac{6}{8}$	26 $\frac{5}{8}$ 21 132-41 R		547-30E	547-20E
Δ5 BANK	347 $\frac{2}{8}$	89-58 R		N	N0-01 W
Δ4	22 $\frac{0}{8}$	89-58 L		W 1/2	N89-59 W
Δ3-6	375 $\frac{8}{8}$	0-01 L		North	N0-01 W
Δ4 cm	38 $\frac{4}{8}$	34-16 R (mt)		N34-E	N34-16E
Δ2 ✓	1320 $\frac{0}{8}$	101-49 203-38 R		North	North
Δ 1					

DEC. 18. 1930
HOOVER RANCH

26

#	Hor.	Ver.	TIME
#6	62° 43'	12° 51'	9-22
#7	62° 42'	13° 29' ¹³⁻¹⁰	9-23
#8	62° 50'	13° 32'	9-24
#9	62° 25'	13° 13° 06'	9-24-30

NEEDLE S 39° E

W.S. Ho New 19163

True Azms 78-10 W
Back light on stake on Highway

27

10
4

60 DYER

Q Road
CL Road

Q Road 3987 93°-34' R N37W

242° 12-03 R S49-30W

14-0

Δ 1

2764 28-06 L 56-13 L S78W

Δ 16°

254 19-17 R 38-34 N74-30W N74-04W

Δ 15-0

918° 25-44 R 51-28 R S86-30W S84-39W

Δ 14-0

414° 23-31 R 47-02 S61 W S62-55 N
+192

Δ 13-0

2543 89-36 R 179-12 S37-30W S39-24W

Δ 12-0 NE By Bridge

433° 3-35 R 7-10 R S52 E S51-00 E

Δ 11-0

421.4

The image shows a sheet of graph paper with a grid pattern. A vertical line runs down the center of the page, dividing it into two equal halves. The grid consists of small squares, and there are three binder holes punched along the left edge. The page is mostly blank, with some faint markings and a handwritten number '28' in the top right corner.

C.S. File No. 19/163

TRAVERSE ALONG RIVER

STA DIST B L M.C. C.C

19

414³ 23°31' S61°W 561-28W ●

Δ 18

254³ 89°31' S37°30'W 537-57W

Δ CENTER OF RIVER

TAN BACK FROM Δ 17-18

214⁰

Δ 17

421⁴ 3°36' S52°E 551-34E

Δ 16

666¹ 2°30' S55°E 555-10E ●

Δ 15

228⁵ 73°12' S53°E 552-40E

Δ 14

7°30' 177⁵ 176° 64°33' S20°W 520-32W =

Δ 13

700³ 11°08' S44°E 544-01E

Δ 12

298⁸ 12°13' S34°E 532-53E

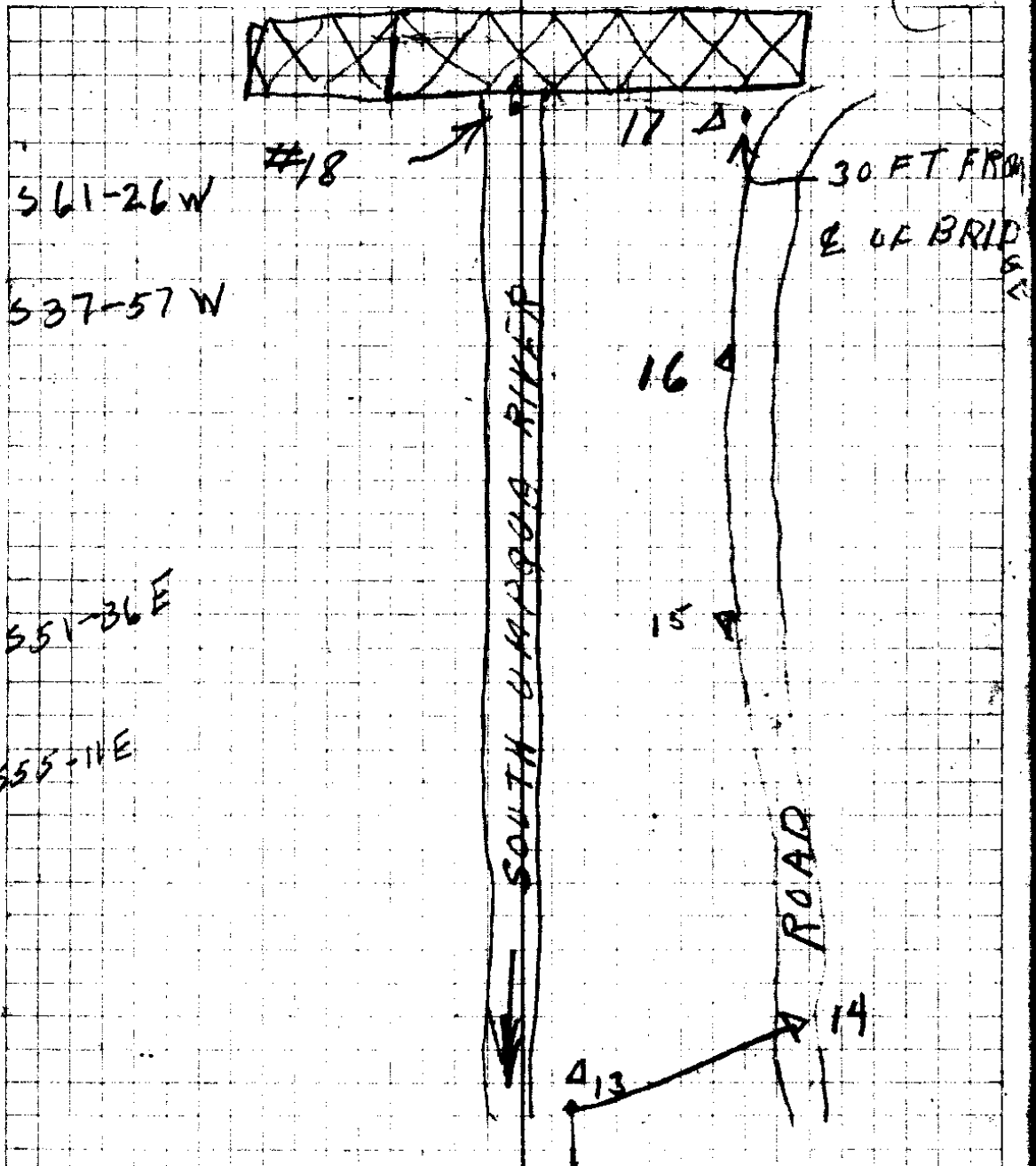
Δ 11

167⁹ 134°54' S45°30'E 545-06E ●

Δ 10

BACK-SIGHT ON Δ 9

North



Δ 13 50 FT TO CENTER OF RIVER

Δ 12 50 FT TO CENTER OF RIVER

Δ 11 50 FT TO CENTER OF RIVER

32

SEC LINE 23

101°49'

30" 22

21

S 78-19 W

N 73-33 W

S 87-10 W

20 OFF SET
19 POLES IN
WAY

S. File No. 18 19/63

3-08716
2 99619

190-12
3 12
22-240

08716⁴
25
43580
17832
227900

99619
25
498095
199238

131824
3113
14137

249.0475
2
49.8

12+324
3836
16+160

3.84
50
60)19200 (3.2 = 30/12' for 50'
180
120

3.84
277
2688
2688
268

3.84
15.8
3072
1920
384
50.672

3.84
16.8
3072
2304
384
6764.51
4085

168
384
672
1344
504
64512

→ 384
31.3
1152
384
1152

60)64.51 (1.95 = 10.25'
45
30
12.8) 49.4 (3836
384
1070
1024

6)120.19
2.03

60)12019 (20
120

460
384
740
748

CS FILE FOLDER

CONTAINS

MORE

INFORMATION