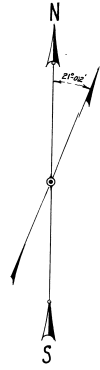
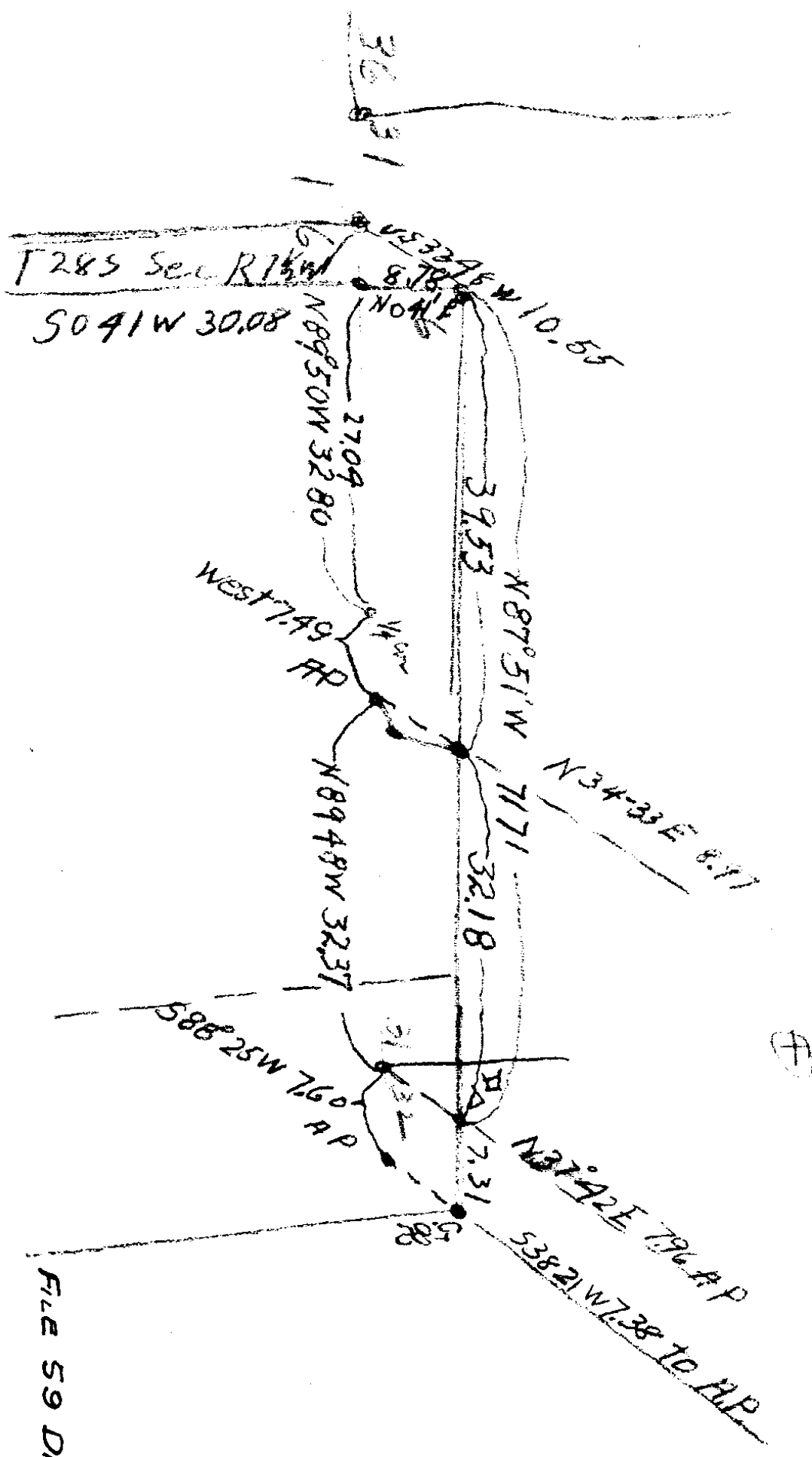


MAP SHOWING
 SUB-DIVISION OF SECTION 31, T. 27 S., R. 7 W.
 AND OVERLAP OF
 SECTION 6, T. 28 S., R. 7 W.
 H. L. Eppstein County Surveyor
 June 30, 1930
 File Co. Surveyor
 V-14-E-44



LIST OF CORNERS

No.	Description	Witness Trees	No.	Description	Witness Trees
1	36 31 Drift Bolt 1" x 18"	Fir 12" N 5" W 92 Feet Fir 10" S 88° E 24 1/2 "	10	NE Cor Sec. 6	Std. Gov. Red Fir 24" S 47° W 56 1/2 Ft. Pipe Cor. B. Oak 5" S 72° W 26 1/2 "
2	W 1/4 Cor. 31 Drift Bolt 1" x 18"	Fir 10" N 35° W 279 Feet Fir 12" S 67° E 26 1/2 "	11	Angle Pt	Std. Gov. Fir 30" S 38° W 11 1/2 Ft. Pipe Chicago 6" S 65° 36' E 10 1/2 Ft.
3	1/8 Cor. Cedar Post 3" x 3" x 30"	Red Fir 12" S 31° 30' W 13 1/2 Ft. Red Fir 20" N 82° E 45 1/2 Feet Laurel 20" N 36° W 4 1/2 "	12	Sec. Cor 31 32	Std. Gov. Fir 48" W 6° E 52 1/2 Ft. Pipe Fir 28" N 40° 30' W 46 1/2 "
4	Cor. 30 31 Yew Post 4" x 4" x 36"	Red Fir 36" S 18° E 27 1/2 " Fir 36" S 12° W 37 1/2 "	13	W 1/4 Cor. Sec. 6	Std. Gov. W Oak 12" S 87° 45' W 15 1/2 Ft. Pipe W Oak 10" S 48° 30' E 20 1/2 "
5	N 1/4 Cor. Between 30 31 Cedar Post 4" x 4" x 36"	W Oak 16" S 47° 15' W 65 1/2 Ft. W Oak 12" S 89° E 19 1/2 "	14	Angle Pt.	Std. Gov. W Oak 24" N 42° E 12 1/2 Ft. Pipe Fir 28" N 40° 30' W 46 1/2 "
6	30 31 Cedar Post 4" x 4" x 36"	Oak 20" N 68° W 233 1/2 Ft. old B.T. Oak 24" N 57° E 28 1/2 Ft. W Oak 10" N 45° 34' E Pl. New W Oak 10" S 60° W 46 1/2 "	15	S 1/4 Cor. Sec. 31	Std. Gov. Fir 10" S 95° E 20 1/2 Ft. W Oak 24" S 56° 30' W 46 1/2 Ft.
7	1/4 Cor. Bet. Secs 31 & 32 In Field	W Oak 10" S 4° E 197 1/2 Ft. COP Co. Pole 1/2 S 34° W 225 1/2 "	16	NW Cor. S. 6, R 7 W	Std. Gov. W Oak 10" S 80° 30' E 112 1/2 Ft. Pipe Fir 15" S 80° 30' E 7 1/2 "
8	SW Cor. D.L.C. # 54	Fir Post 4" x 4" x 36" W Oak 5" N 23° W 20 1/2 Feet	17	NE Cor. S. 6 R 7 W	Std. Gov. Red Fir 24" S 23° W 30 1/2 Ft. Red Fir 12" S 63° W 20 1/2 "
9	Center Sec. 31	Drift Bolt 1" x 18" W Oak 5" N 23° W 20 1/2 Feet W Oak 5" S 44 1/2 W 9 1/2 "	18	NW Cor. S. 6 R 7 W	Std. Gov. Red Fir 24" S 30° 30' E 32 1/2 Ft. Red Fir 30" S 11° W 23 1/2 Ft.



FILE 59 DRAWN

14 - 59

180.7
36/100

1
Δ12
2-30
136°

136.5

40086

Δ11
+6°
260°

258.9

Δ10
+1°
192°

199.3

Δ9
+15°
79°

76.9

674.5

Δ8
15-45
162°

156.2

597.0
76.9
674.2

Δ7
-

87°

Δ6
+1-30
300°

158.5
299.9

458.4

Δ5
2-300°
135°

135
299.8
434.8

(5) 26394

Δ4

109.9

Δ3

1724.6

Δ2 Road
-12
209°

205.1

2094.7
409.9
2504.6

Δ1
-5-30
165°

165.0

1/45
31.5

North NO-15W

12 west 44.5 feet

11 west 43.0 feet

10 west 40.1 feet

9 west 37.9 feet

8 west 37.0 feet

7 west 35.3 feet

6 west 34.4 feet

5 west 29.3 feet

4 west 24.5 feet

3 west 23.3 feet

2 inner 4.1 feet

~~inner west 4.1 feet~~

43 7813 72-40 PA
91-53

1724E

15-27

1531 Fin 10" S75E 203
19 ⊕ W 0 24 S56-30W 462

C.S. File No. 14/59

3

1/4 cov

59

85-39 L

N86W

Δ21

5308.7v

H0 163

160.5

20

6-45 294°

292°

19

3 cov + hie

8.7

90W

Δ18

-10 252°

2482

Δ17B

4607.5

529

52

Δ16

100

996
100

5° R

Δ15

4455°

H0 189°

189°

Δ14

∴

696

Δ13

X14° 1935

1878

Δ12

N0-15E

4

30 W.D. 16 54715W 650
W.D. 12 589E - 1350
M 31

C.S. File No. 14/59

5					
$\Delta 12$		1970.2 [✓]	N382		
-11° 143°	141R				
$\Delta 11$		1829 ²	N384		
-8 214 ⁸	212 ⁷				
$\Delta 10$		1696 ⁵	N385		
-3-45 276°	275.4	90L			N89-42E
$\Delta 9$					
	40 ⁰	90R			50-18E
$\Delta 8$		1341 ¹	S1.2		
+16-30 109°	105 ¹				
$\Delta 7$		1236 ⁰	S 1.1		
-3-30 177°	176 ²				
$\Delta 6$		1059 ³	S1.0		
+7-30 285°	282 ⁶				
$\Delta 5$		776 ²	S 0.7		
-5-30 216°	215 ⁰				
$\Delta 4$		561 ²	S 0.5		
-4 177°	176 ²				
$\Delta 3$ stump		385 ⁰	S 0.4		
	89 ⁵				
$\Delta 2$		295 ⁵	S 0.3		
156 ⁸ -24-30	142 ⁷				
$\Delta 1$ stump		152 ⁸	S 0.1		
-18° 160 ¹	152 ⁸				E ant N89-42E
1/4 Circ ⁵⁶ 131					

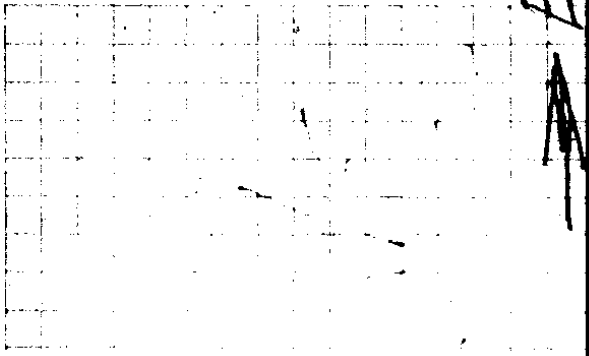
405

2 dd Oak
Cor Part
N.W.T.
10 Fw N35W 27° ft
12 " S 67E 26" "

C. E. No. 1459

25 CAL		5290 ²	+713	2129 ³	
①	481 ²				
Δ24		4809 ⁰			
-630 2614	2597				
Δ23		4549 ²			
9-15 15 ⁰	149 ⁰				
Δ22		4400 ²			
300 645	2979				
Δ21		4007 ²			
9-30 300	5744 2959 -870.3	90 R		Exit	
Δ20					
	20	90L			
Δ19		1891.0			
	64 ²	3282 ⁰			
Δ18		3187 ⁸			
+11-45 106 ⁵	104 ⁵				
Δ17		3063 ²			
-10-45 300	412 2947	3358			
Δ16 CAL		2727 ⁴	N37 ⁵		
-10 ⁰ 108 ²	106 ⁵				
Δ15		2620 ²	N37 ⁶		
-16 ⁰ 188 ⁸	181 ⁵				
Δ14		2439.4	N37 ⁸		
-2-45 300	104 299.8 } 10 ⁰				
Δ13		2129.4	N38 ¹		
-7-30 160 ²	159 ³			Exit	N89-42E
Δ12		1960 ²			

8



CS 31

N 29° W
205 FT

5" W OAK

205

45° N
45 FT

5" W OAK
5 FT

5" W OAK

48° N
48 FT

316 E

C.S. File No. 14/59

9

Δ3

cov

149

85-591

26

me 53612

713

East N 89-42E

25

X

cov
Δ4

2000

90R

East 589-41E

Δ3

2972

90L

North N 0-19E

Δ2

658

90R

East 589-41E

Δ1

60

North N 0-19E

SW cov
054

righted on 3
Set on cov
righted on 26
93-32'

East

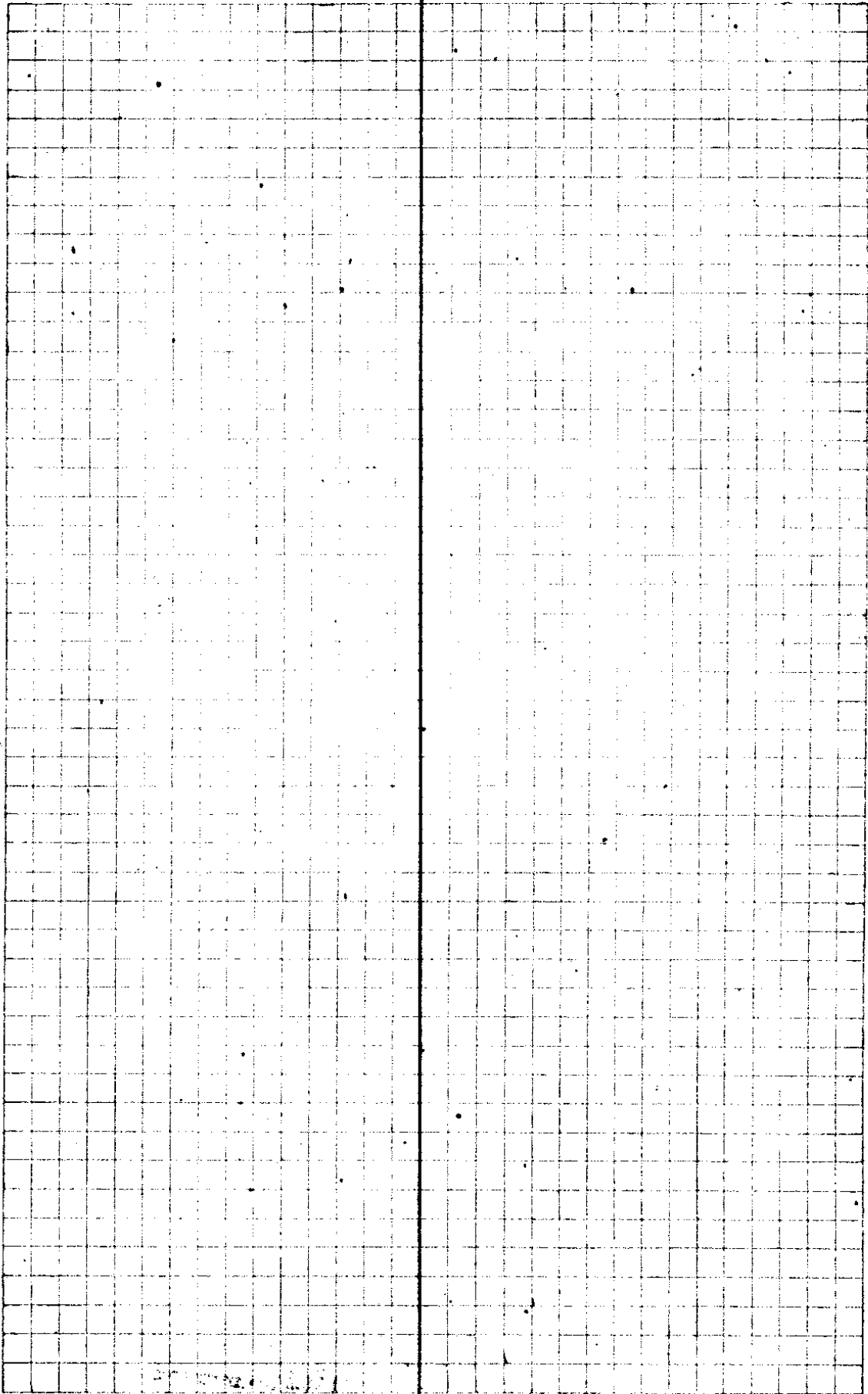
10

SW 1/4

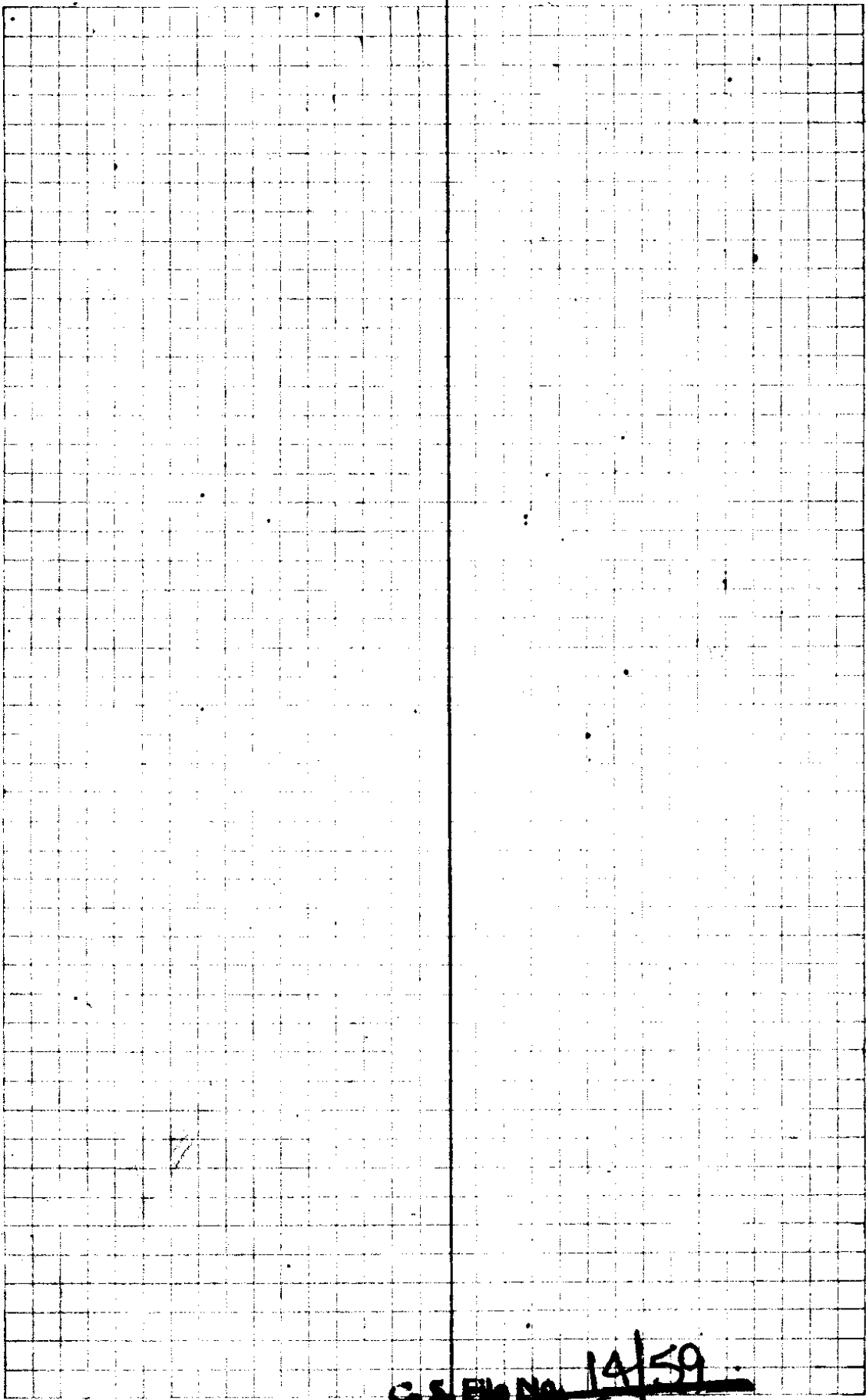
~~C. E. No. 14/59~~

SW 1/4 Q 54
10" W. O. N 55 E 28.5 feet

11



12



C.S. FILE NO. 19/59

(13)

$\Delta 12$
+19-30
574

541

1683

$\Delta 11$
+30
956

828

1577

$\Delta 10$
-14-30
1610

1559

1484

69

590

13289 month 89

$\Delta 8$
+19-30
2170

2046

12692

91 E

$\Delta 7$
+11-45
1440

1410

10643

7.7 E

$\Delta 6$
+23
1880

1082

9255

6.7 E

$\Delta 5$
+27-30
692

614

8169

5.9 E

$\Delta 4$
+17
1290

1241

7555

5.4 E

$\Delta 3$
+27
2130

1899

6314

4.5 E

$\Delta 2$
+200
2000

1985

4415

3.2 E

$\Delta 1$
-40
2430

2430

2430

1.7 E

1/4 Col 3

89-43 N=1 East

North NO-0617

1/16 Cor Cedar Mats 3" square
R Fil 12" B T, S 31-30W 13 5

(15)

Cor

3 East to Corner

022 2629²

93

Δ21 2630²

+10-45 123² 1215

Δ20 2509²

+18-15 154² 1464

Δ19 2362⁸

-2-30 162² 1626

Δ18 2200⁸

+8-15 166² 1643

Δ17 2046⁵

-8 123² 1218

Δ16 1924²

25² 24.9 5° R

Δ15 1899⁸

-6-15 165² 1634

Δ14 1735⁸

1022 90L

Δ13

140 90R

Δ12 1633²

19 feet West
of corner

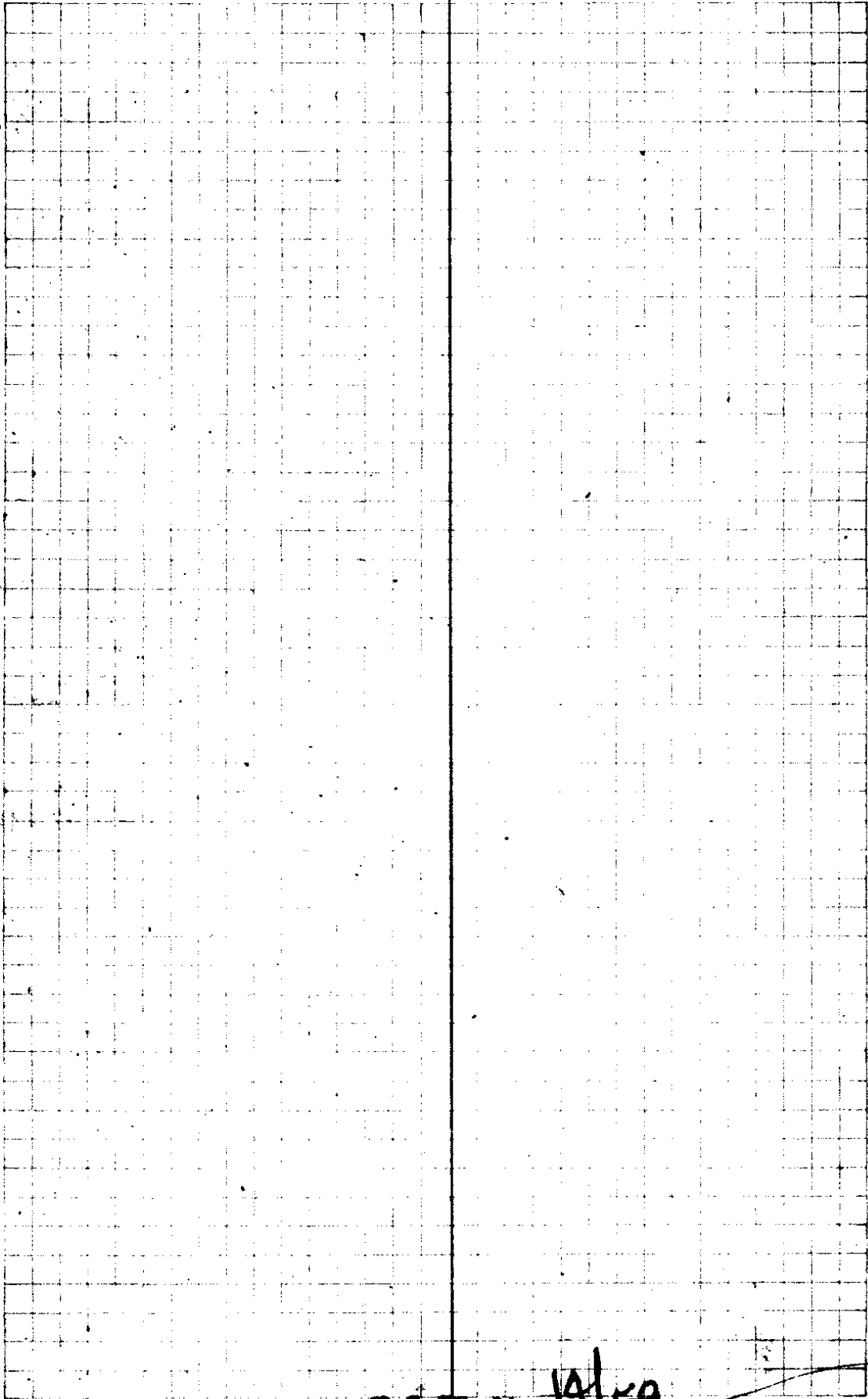
20" Red Fir
N. 1/2 SE 45 feet

found other tree
lingual shape
new post

		R	L	MC	CC
(17)					
$\Delta 12$					
20° 299° 38°	281 ^o		4°18'	S10°E	S10°4'E
$\Delta 11$					
5-15 197 ^H	196 ^o	4°28'		S6°E	S5°51'E
$\Delta 10$					
193 ⁵	193 ⁵		27°48'	S10°30'E	S10°41'E
$\Delta 9$					
4-0 299° 106	$\frac{298^{\circ}}{12^{\circ}}$ 308.9		11°25'	S17°W	S17°29'W
$\Delta 8$					
197 ⁷	197 ⁷	43°00'		S29°W	S28°54'W
$\Delta 7$					
102 ⁷	102 ⁷		26°39'	S14°15'E	S14°6'E
$\Delta 6$					
240 ^o	240 ^o		18°07'	S12°30'W	S12°33'W
$\Delta 5$					
201 ³	201 ³	13°25'		S30°30'W	S30°40'W
$\Delta 4$					
7-15 228 ^o	226 ⁷		3°01'	S17°W	S17°15'W
$\Delta 3$					
26-30 171 ⁷	153 ⁷	2°30'		S20°W	S20°46'W
$\Delta 2$					
13-30 85 ⁸	83 ⁴	18°04'		S17°30'W	S17°46'W
$\Delta 1$					
16 92 ⁵	88 ⁹			S0°0'	S0°18'E

V4 Cor 31 turned 90° from $\Delta 1$ East

18

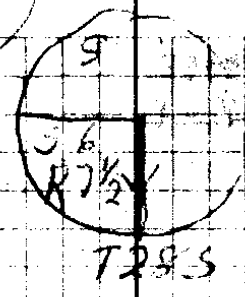


C.S. File No. 14/59

		R	L	M.C.	C.C.
(A)					
74	conv				
16-30 2317	2222	2°16'		S89°E	S89-00E
Δ 6					
16-15 1689	1612		3°07'	N89°E	N88°04'E
Δ 5	conv				
12-15 623	613	2°06'		S88°30'	S88-09E
Δ 4					
11-45 1745	1739		0°09'	N89°30'E	N89°05'E
Δ 3					
2-00 2249	2112		0°34'	N89°45'E	N89°14'E
Δ 2					
14° 1062	1031	0°07'		S89°45'E	N89°48'E
Δ 1					
442	441		81°16'	EAST	N89°41'E
					*
SC. 31-36					
324	324	54°19'		S10°45'W	S10°57'W
Δ 15					
1793	1793	15°44'		S43°30'E	S43°22'E
Δ 14					
4-15 2674	2662		60°07'	S59°E	S59°0'E
Δ 13					
13-45 1022	1044	11°10'		S0°45'W	S12°W
Δ 12					
			4°18'	S10°E	

(20)

(7)

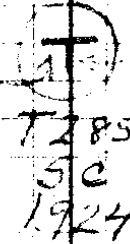


24 R. E. W
S 23 W 30 FT

12 R. E. W
S 65 W
20 FT

(5)

S 1
P. S. W



N. T.
S 6
24 R. E. W
S 2 W T 28 S R. E. W
S 3
S 30-30 E 32 FT

13 FT
N 5 W
99 FEET

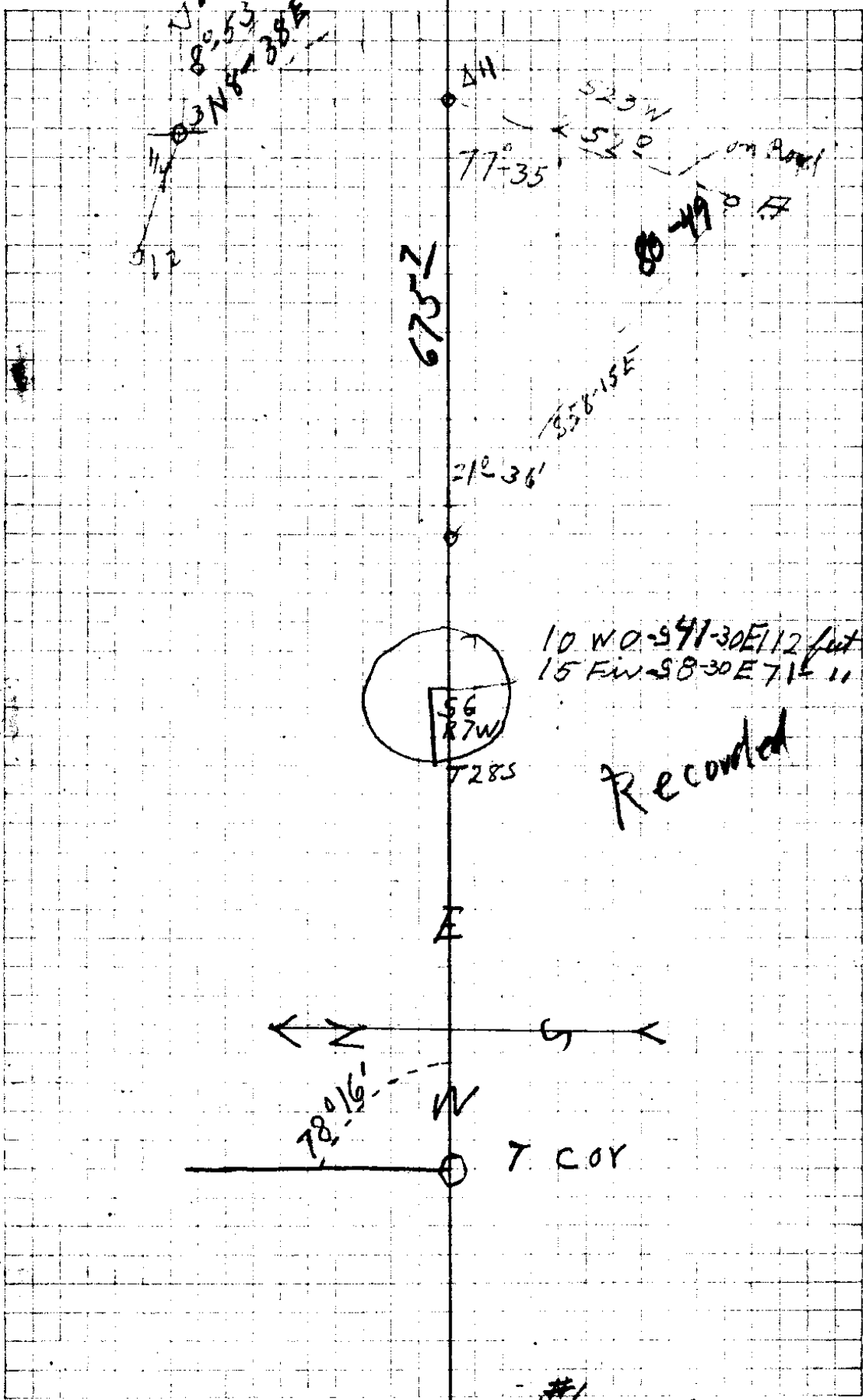
30 R. E. W
S 1 W 29 FT
C. S. T 28 S R. E. W
S. C. I. B. T.

S 85° 15' E 10" FIX
C. S. 31-36 24 S

Recorded

C. S. File No. 14/59

		R	L	MC.	CC
(21)					
$\Delta 14$					
$\frac{1}{4}$ cov 31	1317	81-42 R		589 E	589-40 E
	1220		79-31 L	N 9 E	N 8-38 E ●
$\Delta 12$ 17-15 2970	2946		11-38 L	N 88-30 E	N 88-09 E
$\Delta 11$	6757	9°-45' R		579-45 E	580-13 E
$\Delta 10$ 5-30	2987 2987	0°-53 R		589-30 E	589-58 E
$\Delta 9$ 9 2974	2937		\rightarrow 12°-29 R	N 89-30 E	N 89-09 E
$\Delta 8$	264	13°-40 L \leftarrow		N 77 E	N 76°-45 E ●
$\Delta 7$ cov		Back right on $\Delta 6$	*		
		*			*
cov 5-30	1582	1575	63°45'	N 46°30' W	N 46°-52' W
$\Delta 9$					
4° 190°	1895	4'49'		N 17°30' E	N 16°-53' E
$\Delta 8$					
7-30 2984	2955		78°16'	N 12°30' E	N 12°00' E ●
$\Delta 7$ cov					



H 05 #6
 C & E No. 19/59

23

R
477.9
1180.4

Δ7
-4-30 300
299.17
104.33 } 403.4
Δ6

3-45
251
250.5 714.5

Δ5
-4-30
151.2
150.7

4
+6-30
125.2
124.9 5 L

3
25 24.9
10 R

Δ2
24.9
25 5 L

Δ1
-40 -139.0
138.8

31/32

North

1/4 cov
6 *

X

-5 300
298.9 ^{max} 484.2
51-47 L N22-30E N22-14E

Δ16
-7-45 160.1
158.6
16-44 L N74-30E N74-01E

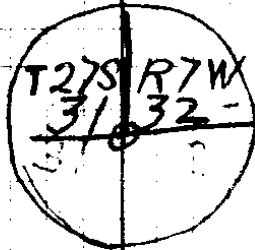
A.P.
-10 121.0
119.2 2°-43 R 589 E 589-15E

Δ15
-8 245.9
243.5 L 2°-18' L N88-30E N88-02E

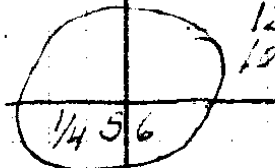
Δ14

48" FIR N20°E 52³

5" CHIMCAPIN 48" FIR N40°30'W 46°
CUT DOWN
N34°W 21°

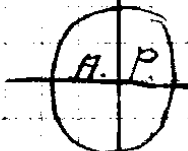


Re corded



12" W C... 4... W 15°
10" W S 48... E 27°
Marked SC.
1/4 S E T.

Recorded



24" WO N 42°E 12³
10" R Fir N 59°W 31⁴

Recorded

(25)

4471²

$\Delta 18$
-2-30
140²

140²

$\Delta 17$
-2-30
223²

223²

1585⁴

4244⁹

$\Delta 16$
+5
115²

110²

$\Delta 15$
+20
300⁰

697⁷
299⁸
997.5

$\Delta 14$

100⁰

50-13E

$\Delta 13$

254²

1/4 corner to L.C. corner.

out (150)

2659⁵ 1/4 cor. offset

$\Delta 12$

1/4 cor. ?

342²

2643²
~~2132²~~

$\Delta 11$

133²

move 11.2⁶ North for corner

$\Delta 10$

+3-15
154²

154⁴

$\Delta 9$

-8-15
300

135.6
296.9 } 438.5

2015⁵

$\Delta 8$

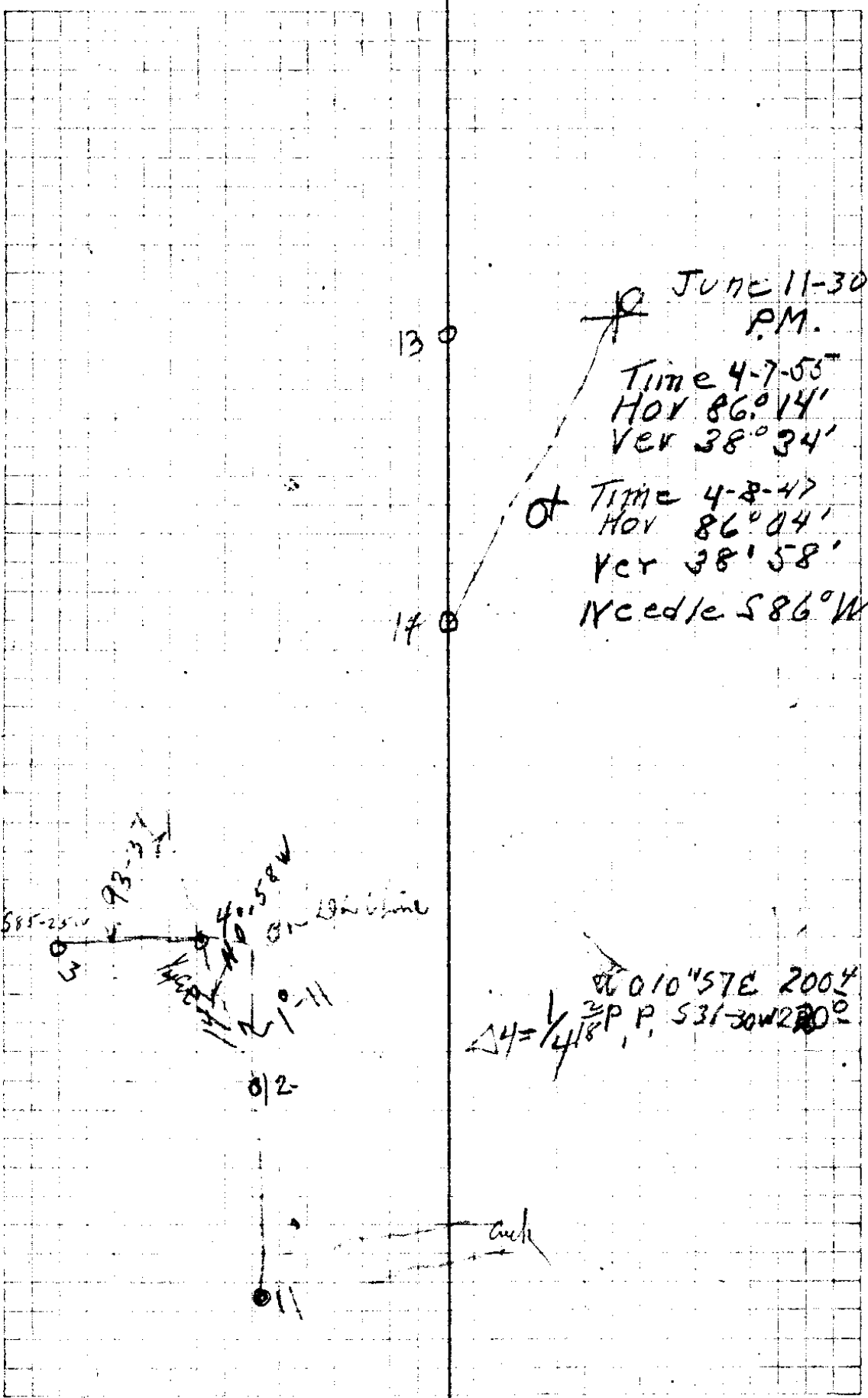
+5-30
300

164.5
298.6 } 463.1

(1581⁰)

$\Delta 7$

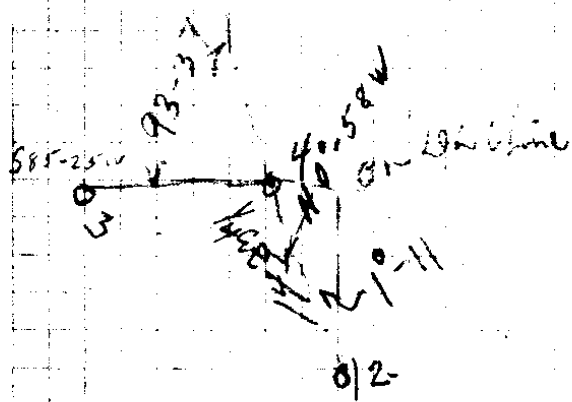
North



JUNE 11-30 P.M.

Time 4-7-53
HOR 86°14'
VER 38°34'

Time 4-8-47
HOR 86°04'
VER 38°58'
Needle S 86° W



0.010" STE 200"
3/4 P P, 531-30W 280°

27

5317°

Course

20°

R 100°-45' 580°E

$\Delta 25$
-70° 2564

2525

5236⁶
26
5234⁹

full 19.5 feet width
line

$\Delta 24$ up

+2° 104

1039

$\Delta 23$

4878²

346

$\Delta 22$

-7° 137°

243
136° 1603

$\Delta 21$

95°

+11-45 20
105°

1038

-10-45 19
97°

44813

96°

North

18

True line N 53167

4" x 4" x 30" Stake
10' ~~W~~ 10' N43-E 54
10' W O S C O W 440

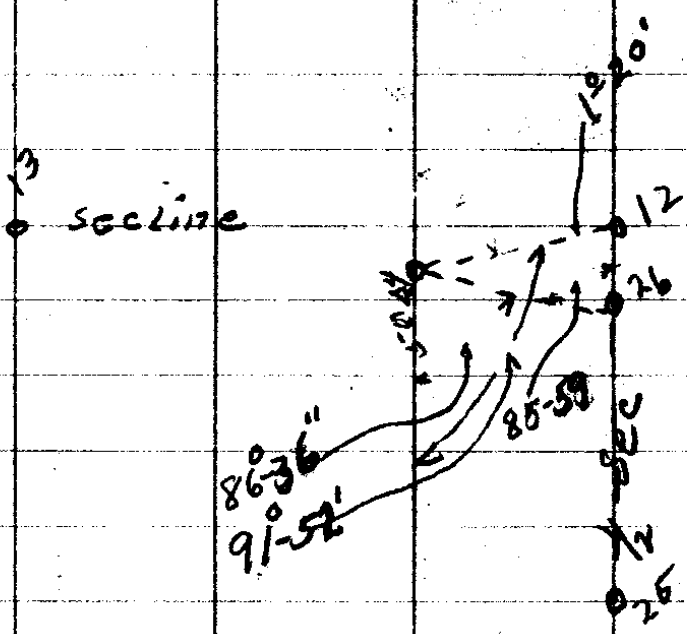
29

K

R

Mag

Calc. Brq n



Δ3 sec lines.

48°10'

5

N0-13W

4-on sec Line N

Δ 4 152.3

43°-0'

S 48°-0' W N 47-57 E

Δ 4

213.7

2°24'

N 89°30' W S 89-03 E

⊙ AP

89.3

0°22'

N 86°45' W S 86-39 E

Δ 3

204.0

5°44'

N 87° W S 87-01 E

Δ 2

154.1

29°30'

N 81°15' W S 81-17 E

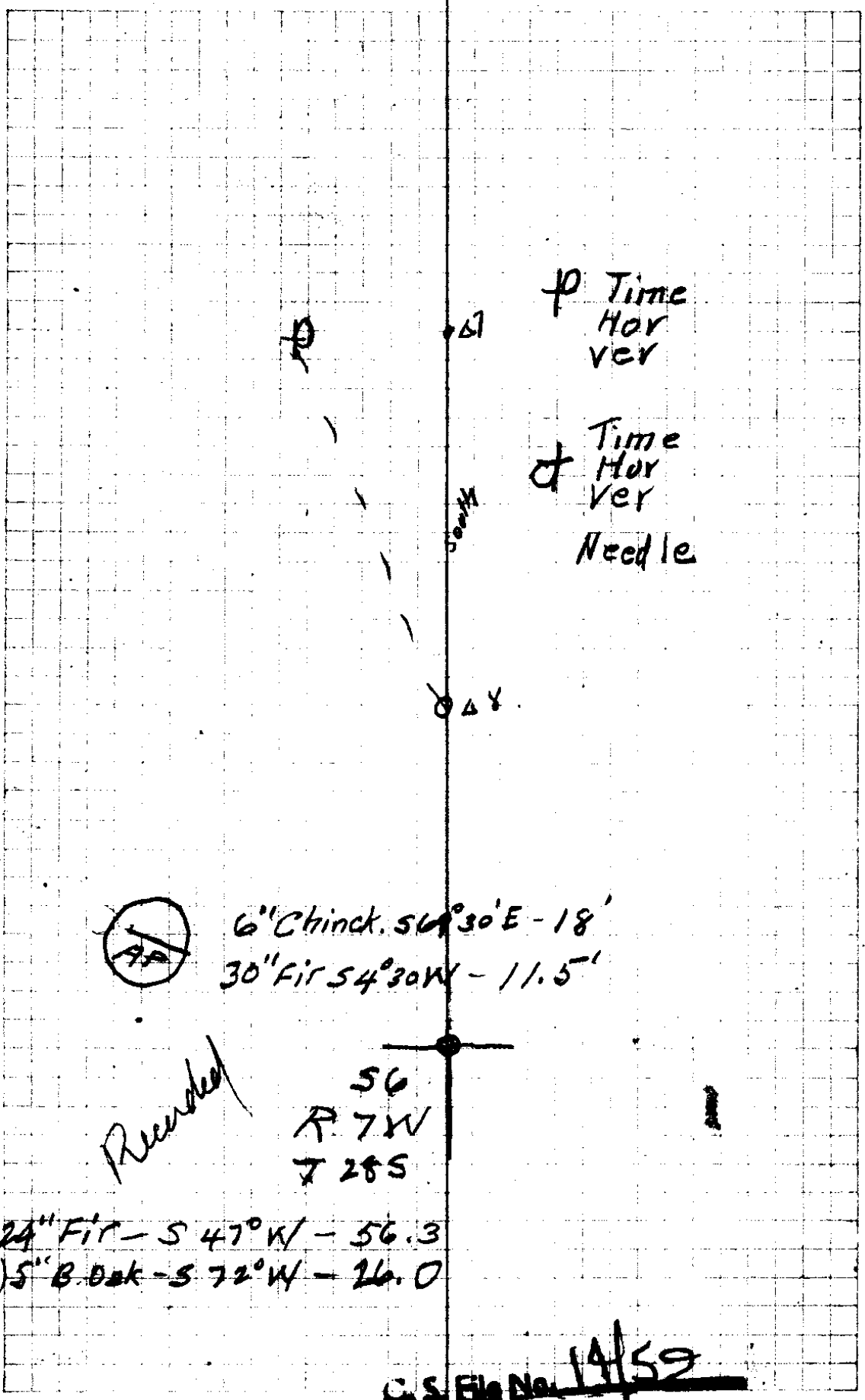
Δ 1

53.8

569° W

N 69-13 E

N 6 sec 6



Time
Hor
Ver

Time
Hor
Ver
Needle

South

~~AP~~

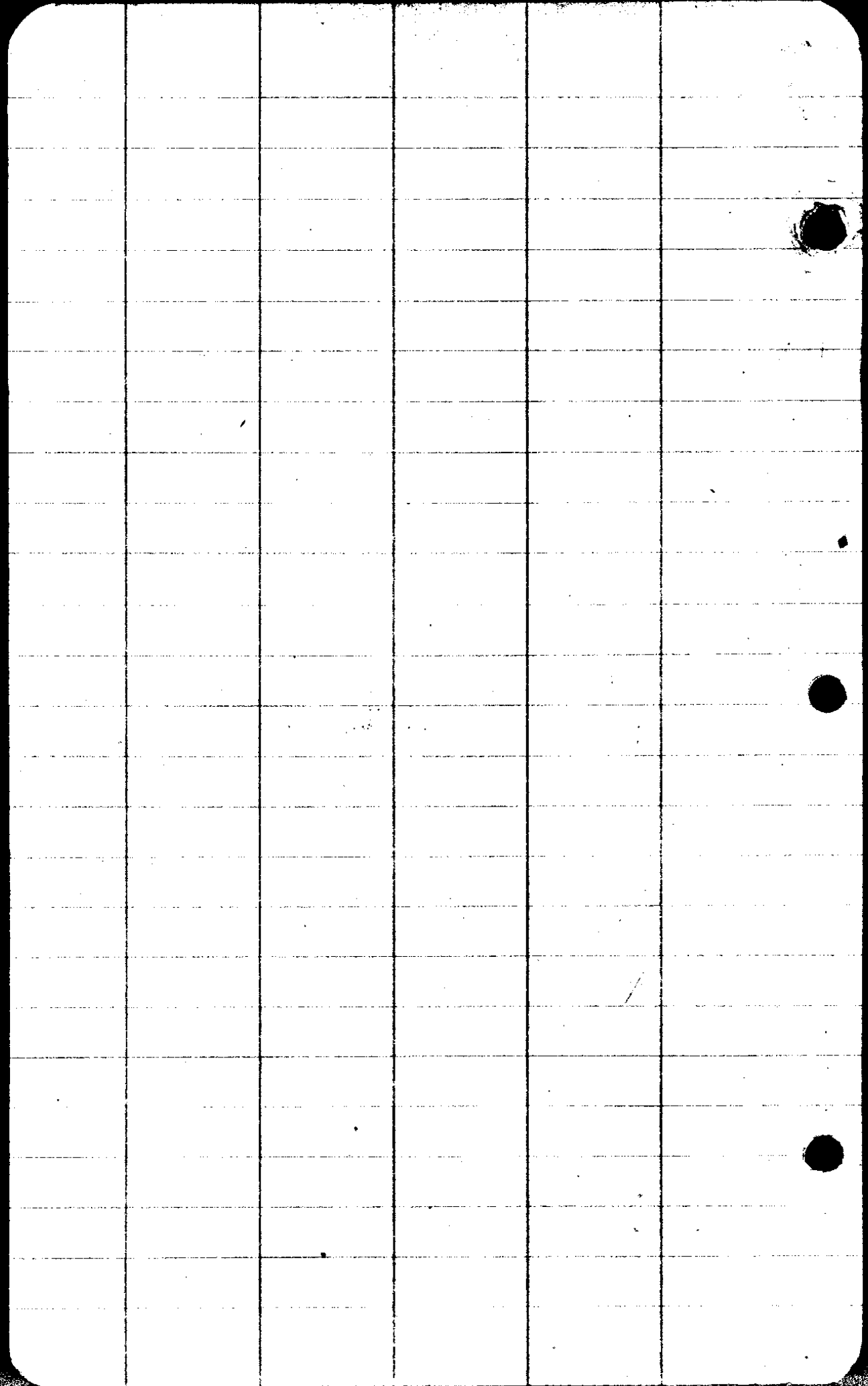
6" Chinck. S 69° 30' E - 18"
30" Fir S 47° 30' W - 11.5"

Recorded

56
R 7 W
T 28 S

24" Fir - S 47° W - 56.3
(3° 10') 5" B Oak - S 72° W - 26.0

C.S. File No. 19/59



CS FILE FOLDER

CONTAINS

MORE

INFORMATION