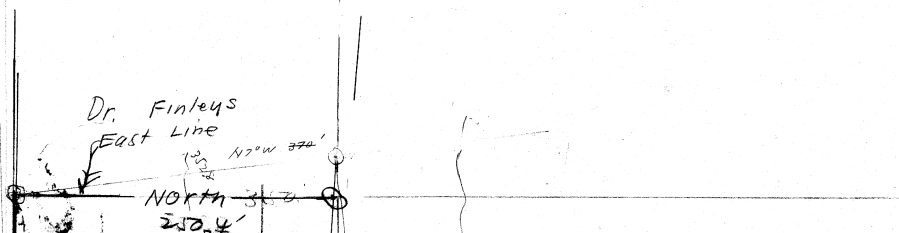


Dr. Finley's
East Line



E.W. Center
Lot 2

West E 115° 12'
N. Line of S 1/2 Lot 2

S 65° 30' E 1196.76'
RIVER S 85° 30' E

N. Line Highway
N 87° 30' W 600'

1" = 100 ft.

Geo. Vaughn
S 1/4 S 30.7'

S Line Lot 2

Beginning
of Description
468.35
277.76

N. 30'

BRIDGE

S 50° 05' 41"

142.85
326.5
468.35

265.4
275.14

148'
138'

336' ±

330' ± 266.12

585.5
585.5
277.76

S 1° 0' E

S 1

S 1° 0' E

BRIDGE

S 1° 0' E

325.5 ± x 5100 ±
D.L.C. H-1

Beginning of E Line Description
277.76

14-47

Geo. Vaughn

The page contains a large grid of graph paper. A vertical line runs down the center of the page, dividing the grid into two equal halves. The grid consists of small squares, with the vertical line acting as a central axis. There are three binder holes punched along the left edge of the page.

14/47

①

Geor Vaughn

MC

Com

09A

151²

11-15L

S64 E S63-43E

Δ8A

291 N River 441

1755

7-49R

S52-30E S52-28E

Δ7A

204 N River 309

x1 353

3.53

7⁰-29L

S60 E S60-17E

Δ6A

159 N River 241

-1-30 2927

2.923

30-36R

S52-44 E

Δ5A

237 N River 359

x 279

2.584

29⁰-01L

S83-90 E S83-44 E

A4

204 N River = 309 LK

#

//

Δ5

x15-15 1635

157.7

3.498

x17-45 2012

1.921

1⁰-L

com

S7-33E

Δ3

127⁸

Δ2

x24 55⁸

.51

Δ1

4.757

S3-33E

1/41

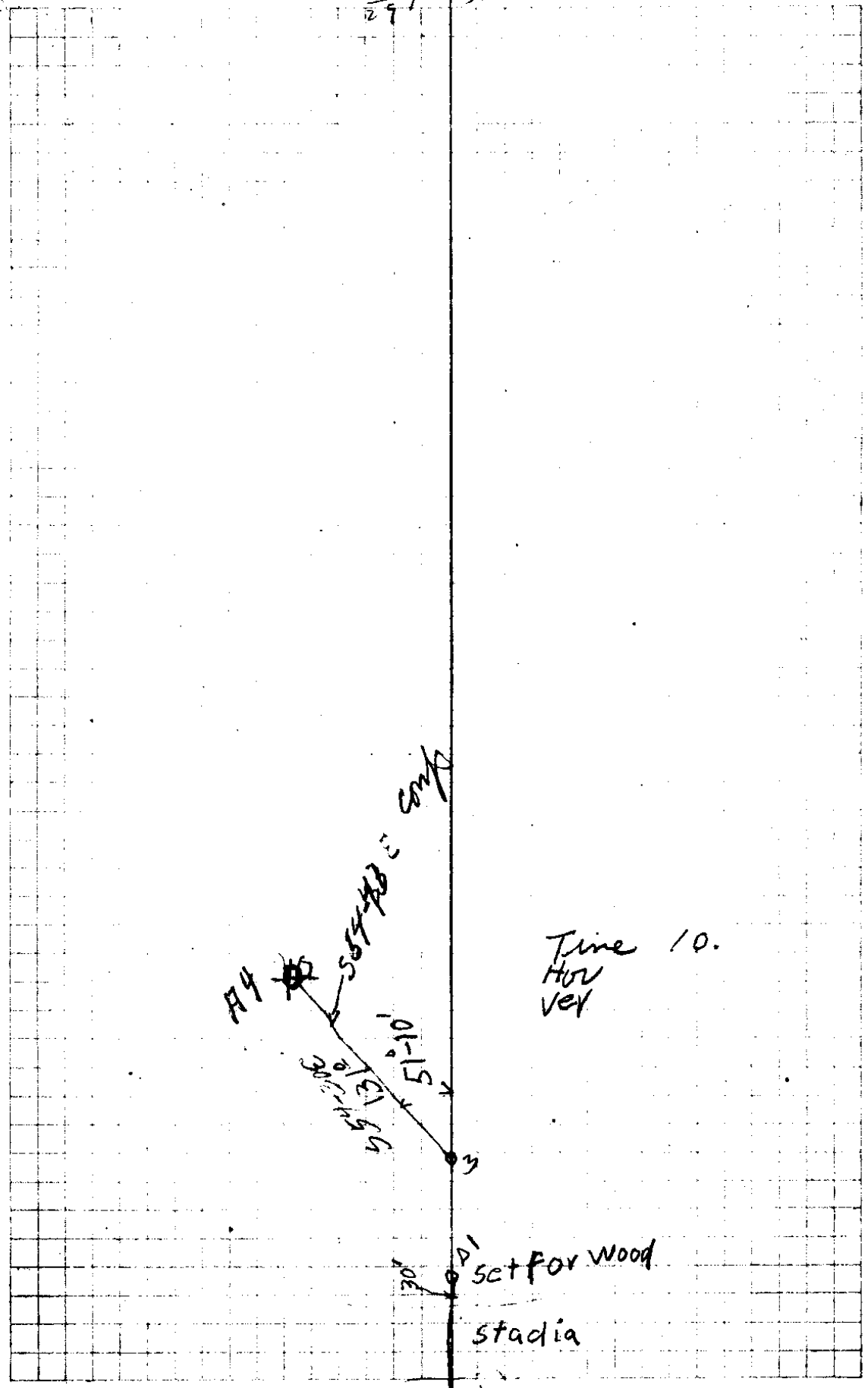
69
4

97
3
291

79
3
23

53 68
20

(2)



Time 10.
Hov
Vex

D1 set for wood
stadia

130
430
33

114

14/47

③

Geo Vaughn

18B
+18 92⁵

880

10R

West

17B

W

50 49²

20L

16B

50 49²

10R

15B

+10-30 95³

93¹

14B

+4-30 274⁶

273¹

5L

13B

35 34⁹

10R

12B

35 34⁹

5L

11B

+18² 91²

867

73-57R

N 89-42W

10B

#

Δ Run

1240 33

40 feet
212
62E 13¹ 8

89-22L

North. 140-09 E

Δ 11A

4.70

15-11L

N 89-30E N 89-31E

Δ 10A

222 N Run 33

1696

11-35L

S 75-30E S 72-18 E

Δ 9A. N.

261 N Run 39.5

87
26

4

M.R. Deqn

10B 8" Fir Mark R.P.C.S.
 N 2-30 E. 5 1/2

80-04
 10 Rod
 516 W
 518-28 W
 B10

14/47

(5)

Geo Vaughn

Δ4

0-44R

N4-33W N4W

Δ5

-24-30
16-

.609

2-52L

N5-17W N5W

Δ22B

-9-30
174⁸

1.724

2-56R

N2-25W N2-30W

Δ21B

-20-30
308

2.885

84-29R

^{comp}
N5-21W N6-30W

20B SW Co

60.5

10.626

19B

*19 298

2.818

Went

18B

Geo Vaughn

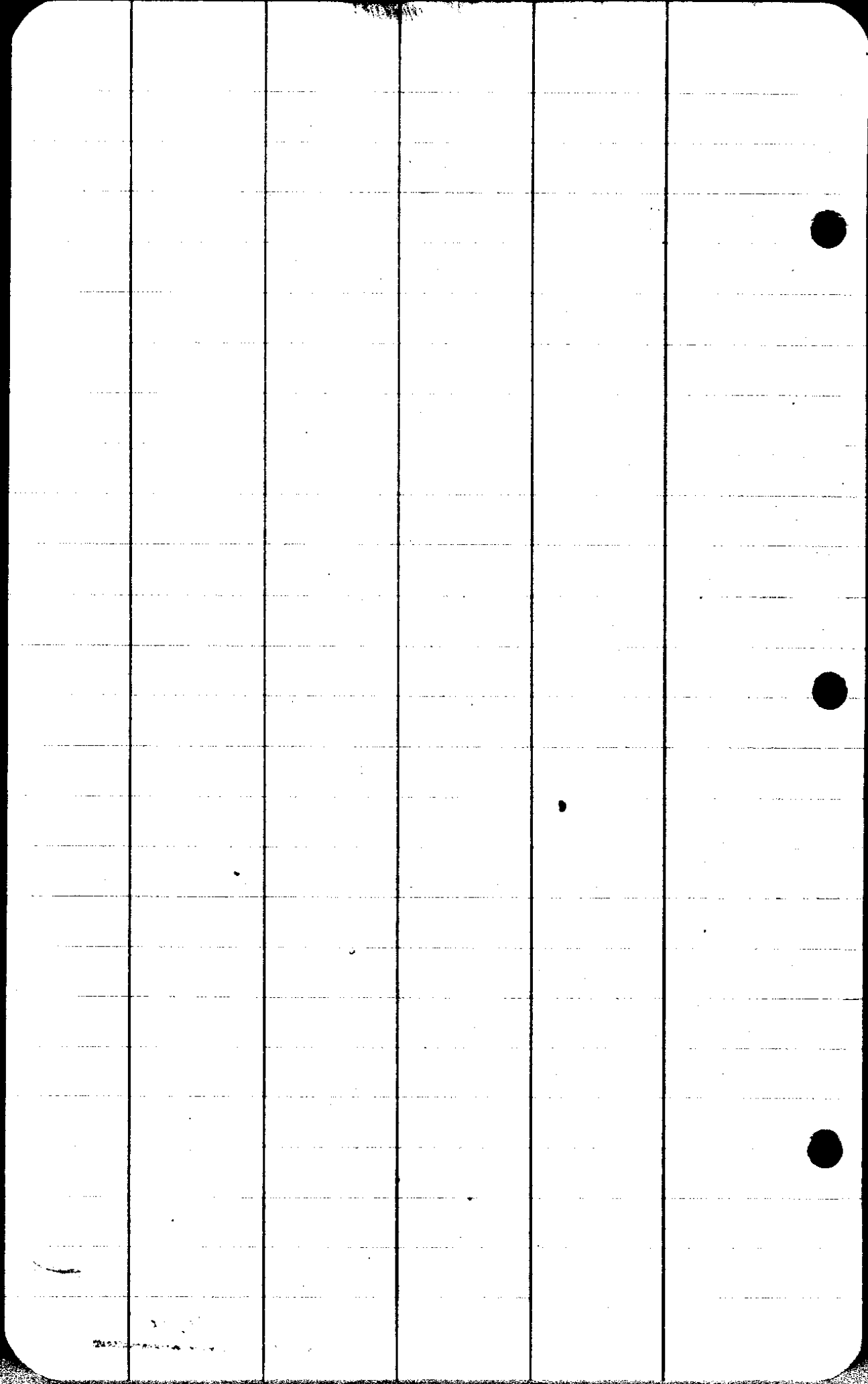
(6)

P.D. Wofford ch
Holland Flag
Vaughn A.K.



AUG 7 1930
TIME 3.45
HOR. $80^{\circ} 36''$
VERT. $89^{\circ} 4''$
NGOR 12575W
TIME
HOR

C. S. File No. 14/47



1

Vaughn

Survey 2

Δ3 Earth

147.2 ^{23 ch} 11-12 R

571-15E 570-58E

Δ2

195.3 ^{96 ch} 6-16' R

582-9 582-10E

Δ1

242.4 ^{36 ch} 88-95L

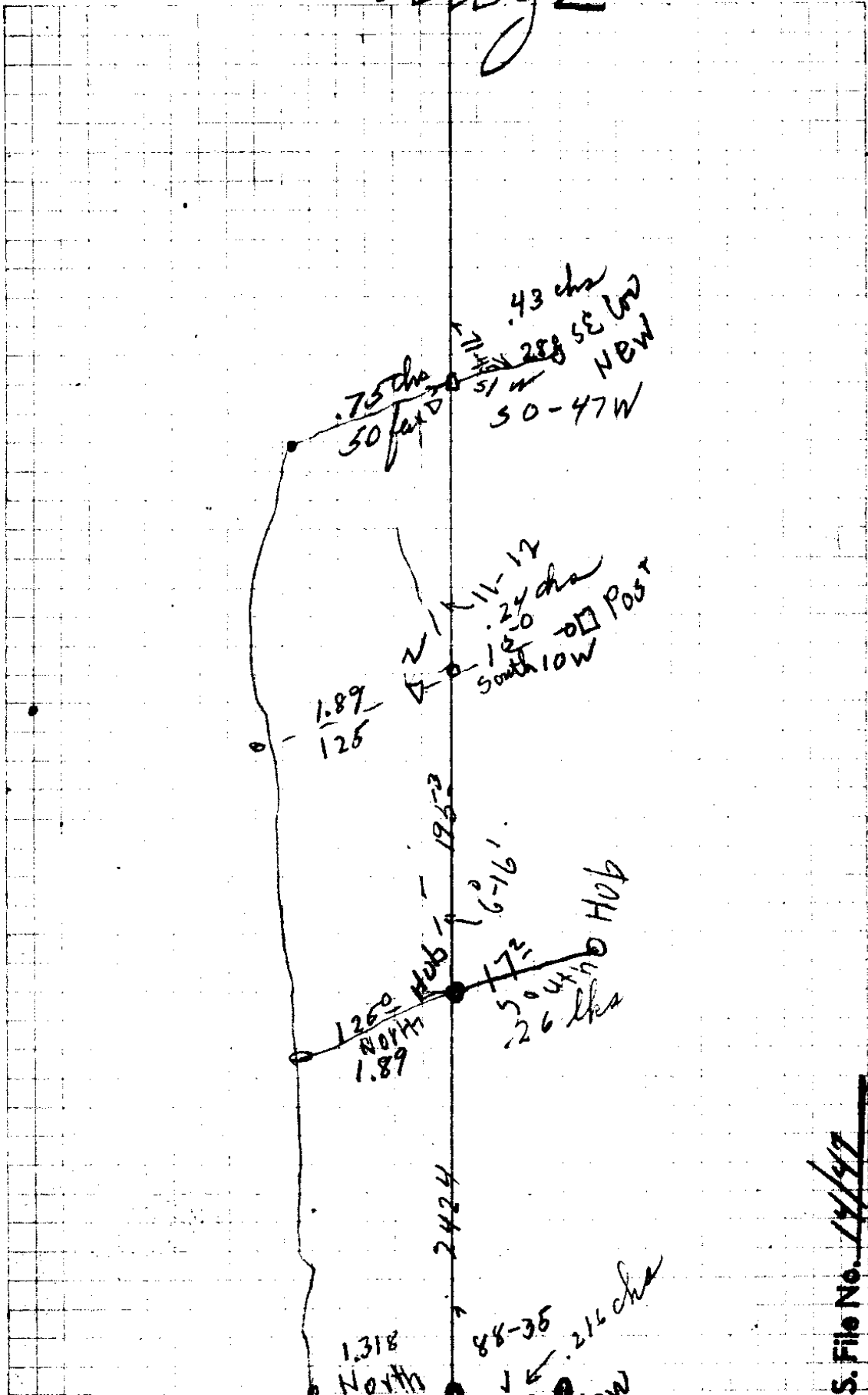
584-30E 588-26E

also
low

584

Survey 2

2



C. S. File No. 14/197

CS FILE FOLDER

CONTAINS

MORE

INFORMATION