

CERTIFICATE OF SURVEYOR

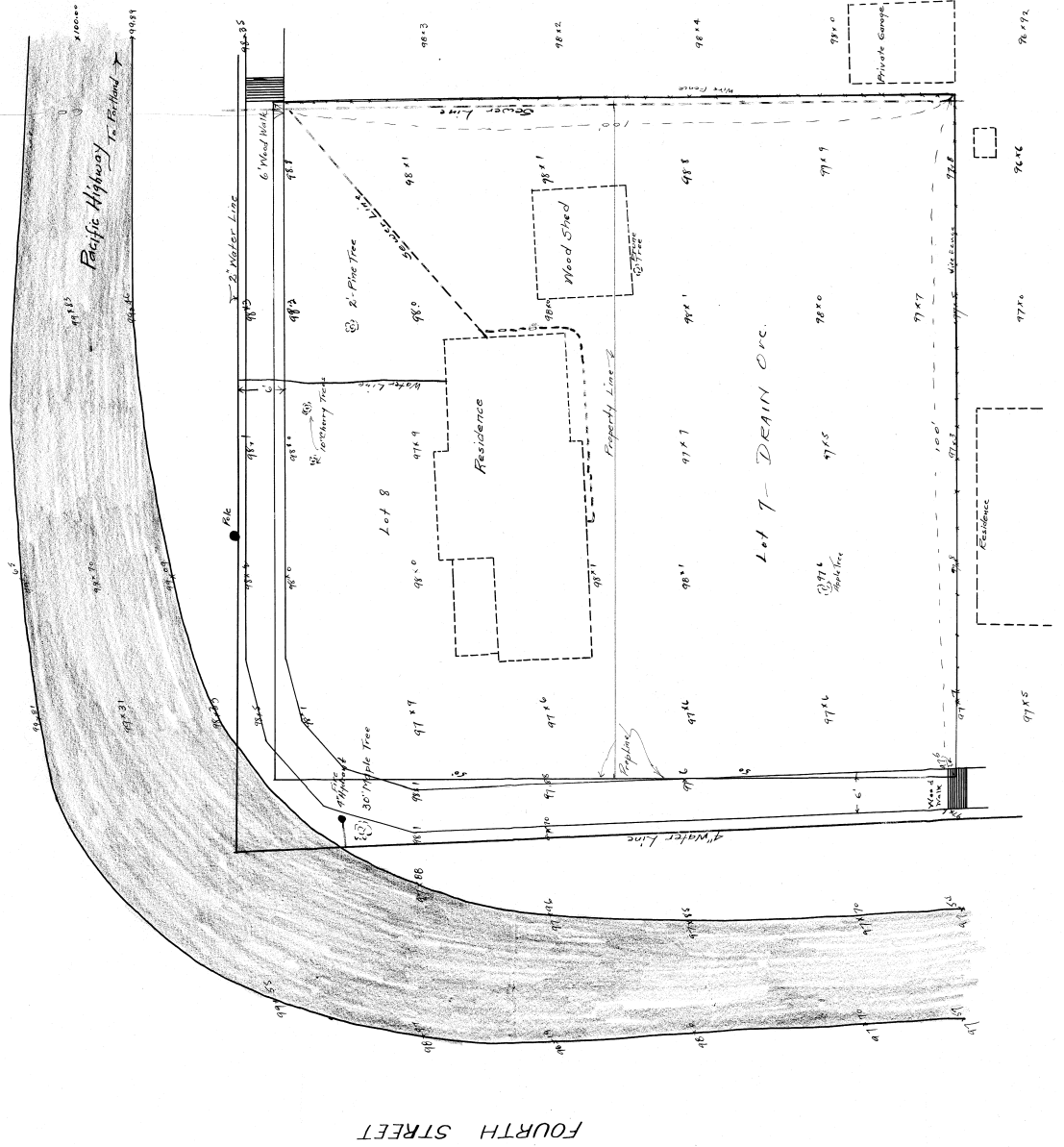
I, H. L. Eppstein, of Roseburg, Ore, do hereby certify that this map was made from notes taken during an actual survey under my immediate supervision, and that it correctly represents the lots and block boundaries with reference to location elevations and streets in accordance with the South East Corner of Lot 7, Block 3 City of Drain.

*H. L. Eppstein*  
 Registered Professional Engineer  
 License No. 101  
 November 3, 1930.

"A" ST

MAP OF  
 LOTS 7 & 8, BLOCK 18  
 CITY OF DRAIN, DOUGLAS CO., ORE  
 FOR  
 THE TEXAS OIL COMPANY  
 H. L. Eppstein County Surveyor  
 Scale 1" = 20' (1" = 40')

B STREET



SKETCH  
OF  
LOTS 7 and 8 BLOCK 18  
DRAIN Scale 1" = 20' ORE  
Surveyed and plotted by L.W. Ciner

CS FILE FOLDER

CONTAINS

MORE

INFORMATION