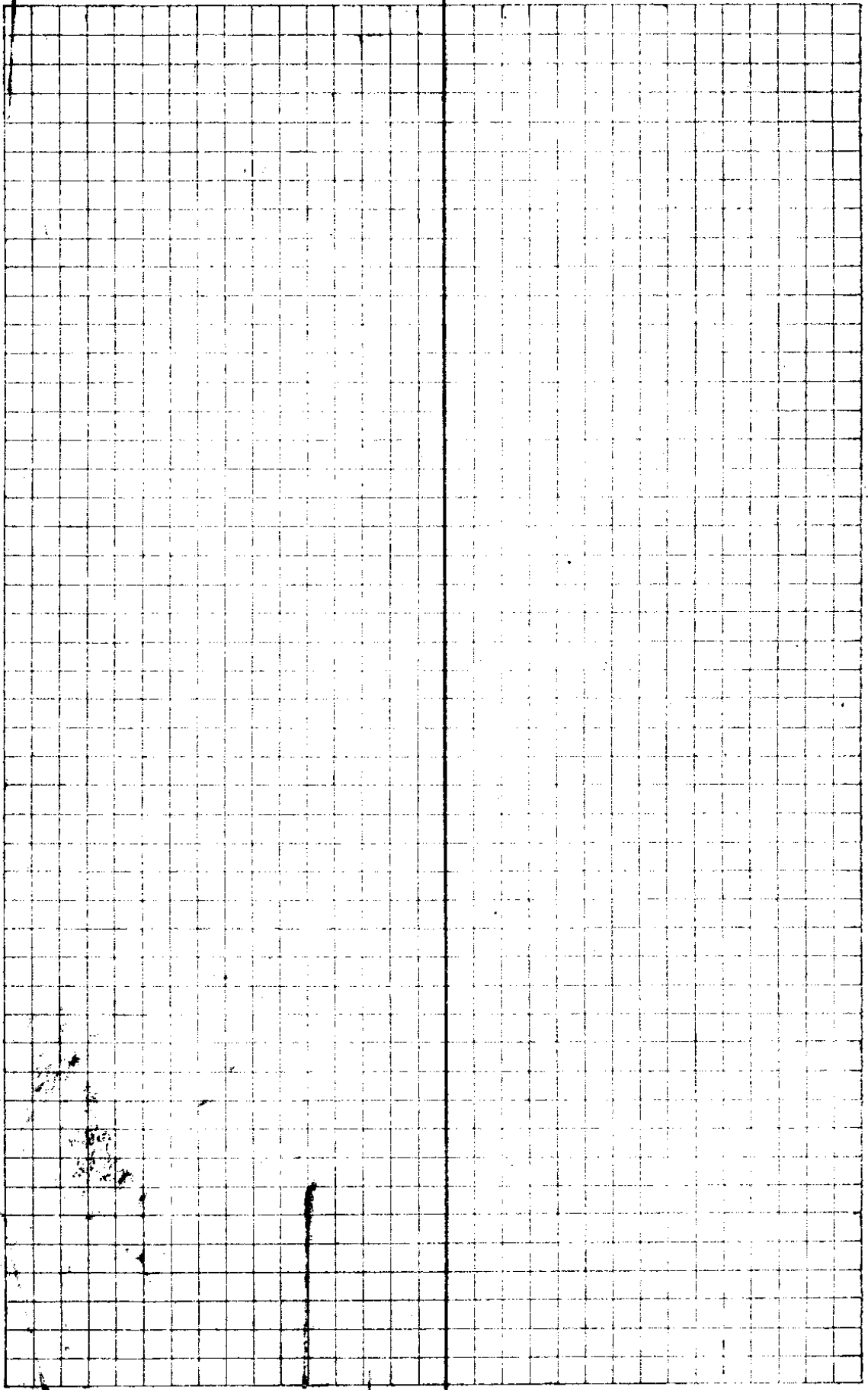


OS EBN 14/91



Oliver Haines ✓

Hub	Chains	L	CC	MC	Slope	
4.535 10	6.822		52° 8' W	S 2° W	-6° 10'	1.851 5.000
1.713 9	4.962	0° 3' R	52° 5' W	S 1/2 W	-4° 37'	4.978
8.	5.762	1 18' 0° 34' R	51° 26' W	S 1/2 W	-7° 15'	5.102 5.000
25.749 7	1.538	0° 15' R	51° 11' W	S 1/2 W		
27.251 6	7.851	0° 1' R POT	51° 10' W	S 1/2 W	+13° 58' -3° 10'	5.000 3.000
19.400 5	5.508		51° 10' W	S 3/4 W	-3° 40'	5.000
13.892 4	6.014	52' 0° 26' R	S 0 1/4 W	S 10' W	-5° 45'	2.039 5.000
7.928 3	5.108	51' 0° 26' R	50° 18' W	S 1/4 E	-6° 24'	1.68 4.971
2.770 2	2.733	1 14' 0° 36' L	50° 54' W	S 1/2 W	+13° 30'	2.754
1	2.037	1 34' 0° 47' R	50° 03' W	S 1/2 W	+38° 41'	2.590

Cor. 1/6
12/7

Set for corner Sandstone 7x12"
 2 8" long x on top 12 CS on SW face
 1 10" NW 6 on NE + Top SE - 6 matches
 W cor 5 on S cor

15/12

3922
257
11

42
16
52
47
157
36
121

2 1

Nov. 25 1929

Truing
Richardson
Haines

9942

9942

9942

Begin here 11-26-29 TUC

96102
99847

99795
288975
513

99497
497285
2079
60
99377

Top of Spruce

97237

78061 Vari 21 B

2039
Along old railroad line

121
36
85

99221
497
99327
89863
894393
397508
494003067

167
36
91

151
36
24

70
26
44

168
125
43

58
52
110
107

157
95
21
35
104

21
85

78661
269
70949
705
73322
57321

99421

105
551
524

96142
5

480710
20954
044
71551

88672
4075
787408
69752
470184
393704
96185728

99847
3
299541

37
157
36
121
32
85
37
112

97237
764
358945
486155
680659
73314698

Identified from A DBTs as recorded
square on bank plain of others was
did not check them out. I marked
all trees.

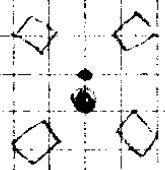
Club	Chs	L	CC	MC	Slope
20 324	8,609		✓		
19	4,894	5 40 2° 50' L	N 89° W	N 89° W	408' 4,317 5,000
18		1 44 0° 51' L	N 86° 10' W	N 86° 2' W	
18	12,077		N 85° 19' W		L 1,552 + 7° 30' 1,500 ± 14' 40' 1,130 ± 420' 5,000 - 9' 18' 3,000
17	5,744	10 36, 7° 18' R	587° 23' W	587° W	-3° 45' 740 5,000
16 314	8,775	100 5 50' R	537° 19' W	536° 4' W	-10° 20' 3,959 -1232' 5,000
73,039 15	5,194	64 32, 34° 46' R	52° 33' W	52° 2' W	-7° 4' 232 5,000
14	7,213	POT	52° 33' W	52° W	L 2,275 -9° 0' 5,000
13	4,973	14, 0° 6' R	52° 27' W	52° 4' W	-0° 55' 4,973
12	4,318	0° 6' 0° 3' R	52° 24' W	51° 50' W	-3° 20' 4,325
11 51,341	4,806	0° 31' 0° 15' R	52° 9' W	52° W	-14° 20' 4,960
10 46,535		0° 2' 0° 1' R	52° 8' W		

5/11

UN-113 5.0

85 19
7 15
17 37

5 87 23 W
50 4
3 37 19 W
34 46
2 33



99744
96742
99711
98686

99428
4317
645996
49428

99144
1.5
495720
1.0144
187120

76742
113
30226
40412
10931646

99780 - 4080 295 28
347712
429 230 676

98870
97617
4312
5299
495570

98056
3

98378
3532

99240
40628

296058
42357
10432
1.4872
11550

855402
491576
485402
29513

98769

2.0168

330278502
4854
81742

99486

4959310

94831
13

9983

91 193 15
51 3
179 60 6

499155
149862
49242
49322
43176977

96887
474
58132
871483
387548

87 5
2 8
179 6
24

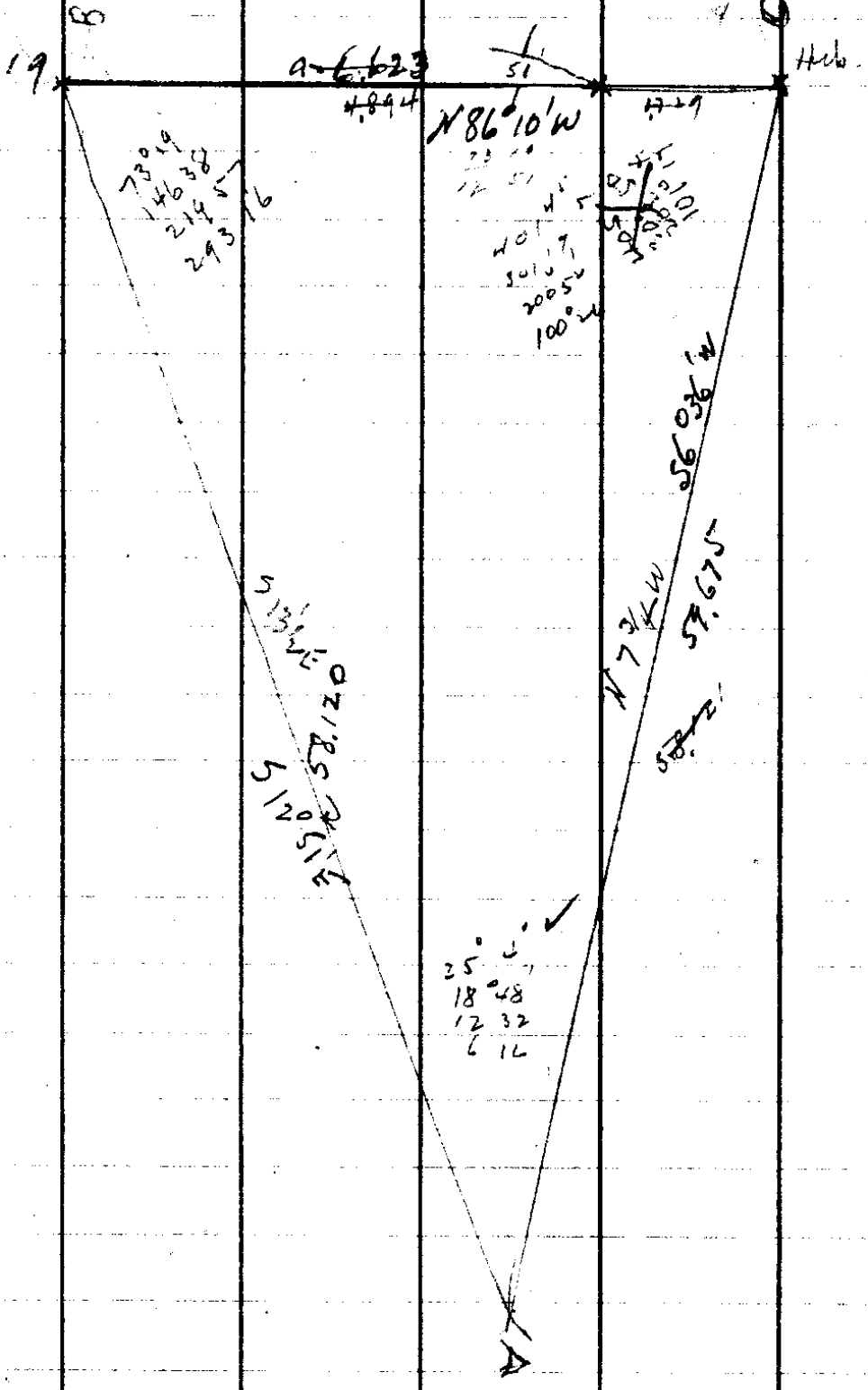
48
26

45035952

100 26
73 19
6 10
180
18636

140145
100 26 11

105



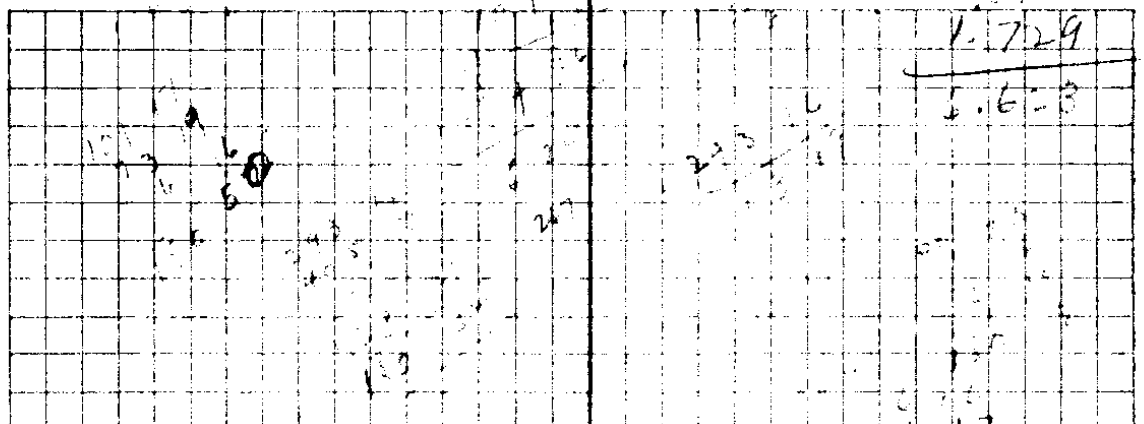
88/hl

1-1634

4.94

1.729

5.628



A = 6.16

B = 73.19

C = 100.25

100.25

101.47

Log Sin A = 9.038048

Log Sin B = 9.981323

821055

9.038048

~~9.569163~~

~~9.951323~~

~~9.777756~~

45.013

1.783007

9.981323

1.764330

58.121

9.859103

9.977380

~~9.59903~~

9.879723

73.801

58.121

a = 6.623

Log a = 821055

A = 6.16

B = 73.19

C = 100.25

180 D

A+B = 79.35

1.783007

9.992783

1.775790

C = 59.675

Log Sin A = 9.038048

Log Sin B = 9.981323

1.764330

b = 58.121

S. 12/7
13/10

1461

N 22° E

N 2 1/2° E

L

96-1/4

16

16441 R

S 37° 19' W

15

Alb

N 14° 49' E N 14° E

+2' 10'

2 223

-3' 50'

2 400

5 000

2 900

5 000

Δ H. H.

30 d 39
152° 20' V

S 12° 51' E

19

Gr C139

1040

S 17° 17' E

S 17° 3/4 E

Sub

4° 26' V

S 12° 51' E

19

12 Oak St 215' - 22 SR 800 S 13 E 17
 14 Oak St 176' -
 12 W 13° W 159'

145
 964
 3
 32

99892
 99878

79 123
 169 11
 14 49

99892
 2223
 299676
 199784
 199884
 222039916

~~Dec.~~ 27. 1929, Sept. 19 13 18

	Time	Ver.	Hor.	M.C.	Diff. Inc.
1	1:34	22° 02'	71-20L	S. 21° 15' W	9.567
2	1:35	21-56	70-59	S. 21° 20' W	9.583
3	1:36	21-52	70-48	S. 21° 30' W	9.600
4	1:38	21-50	70-35	S. 21° 30' W	9.617
5	1:38	21-46	70-25	S. 22° W	9.633
6	1:39	21-59	70-05	S. 22° W	9.650

Lat- 43° 40' 00"
 Log Cos L 9.859300
 Log Tan L 9.979780

Deck Gren. Noon - 21° 5' 53.5" Diff / hr. 27.64
 Diff / hr - 27.64
 Deck ~~Ref.~~
 Log Sin θ 9.557703 9.557703 9.557709 9.557714 9.557714

Obs A Ref -
 Paralt +

22° 2' 22" 8"	21° 56' 22" 8"	21° 52' 23" 8"	21° 50' 23" 8"	21° 46' 24" 8"
---------------	----------------	----------------	----------------	----------------

Alt.	21° 59' 46"	21° 53' 46"	21° 49' 46"	21° 47' 15"	21° 43' 42"
Log Cos A	9.967178	9.967483	9.967637	9.967788	9.967990
Log Tan A	9.606125	9.604137	9.602670	9.601938	9.600831

$\frac{6}{5.67}$ $\frac{213.5}{5.83}$ $\frac{37}{5.47}$ 5.43 1083
~~4244~~

25

9.859360
 9.967990
 9.827350

85
 46
 510
 340
 34.10
 55

~~97.74~~
 9774
 543
 103.17
 523

52
 18
 666
 55
 14.76

9.557714
 9.827350
 9.729864

38.25
 85
 27.40

45
 6
 45
 270
 274.5

607
 3242
 2426
 27422
 45

53686
 38073
 91759

9.979780
 9.600831

412
 44
 244
 244
 269.50

8.76

5230 $25W$
 17450
 95
 $N86 10N 38073$

9.859360
 9.967178
 9.826538

9.557703
 9.826538
 9.731165

9.979780
 9.606125
 9.585905

71 $20W$
 52230
 173
 $N86 10W 53849$
 38540
 92359

#2

9.859360
 9.967483
 9.826843

9.557703
 9.826843
 9.730860

9.979780
 9.604137
 9.583917
 38363

5220 $46W$
 7050
 143
 $N86 12W$
 53810
 38563
 92173

#3

9.859360
 9.967638
 9.826999

9.557703
 9.826999
 9.730962

9.979780
 9.602639
 9.582959
 38234

5220 $48W$
 7050
 143
 $N86 10W$
 53891
 38234
 92025

#4

9.859360
 9.967788
 9.827148

9.557714
 9.827148
 9.730566

9.979780
 9.601938
 9.581718
 38170

5230 $44W$
 7050
 143
 $N86 16W$
 53773
 38170
 91943

Hub	Cbs	L	CC	MC	Stape
36357 ²⁷	41.437	12 54 6° 27' R	N 1° 26' E	N 1/2 E	74° 56' 4453
31920 ²⁶	4.931	2 41 1° 20' R	N 4° 51' W	N 4 1/2 W	44° 40' 4947
25	6.479	0° 1' L	N 6° 11' W	N 6° W	77° 10' 1.518 5.000
24	7.831	45 15 22° 38' L	N 6° 10' W	N 6° W	77° 5' 2.851 5.000
23	12.408	202 00 101° 10' R	N 16° 28' E	N 15° E	48° 30' 4.171 L 3.300 450' 5.000
22 ✓ 271			N 14° 42' W		
21					

1/4 Cor 1/3	As	recorded	Co. Surv. Office		
	271		S 23° 21' W	S 23° W	
38.409 ²²	5311	71 57' L	N 84° 42' W	N 86° W	77° 5' 3.351 5.000
21	1764	1 39 R	N 88° 31' W	N 89 1/3 W	412' 1769
20 3132		1 18, 0° 39' R	N 89° W		

Hand	Chis	L	CC ✓	ML	Stfc
71.673 38	4.633	4 12 2° 6' R	N 2° 53' E	N 2° 30'	+ 9° 35' 4.699
61.440 37	3.038	1 10 0° 35' R	N 0° 47' E	N 3/4 E	40° 30' 3.090 ●
44.402 36	3.172	3 28 1° 44' L	N 0° 12' E	N	+ 12° 1' 3.243
61.230 35	2.664	2 32 1° 16' L	N 7° 56' E ✓	N 2 1/4 E	+ 15° 52' 2.770
58.566 34	4.237	5 9 2° 35' L	N 3° 22' E	N 3 40 E	- 6° 55' 4.240
54.327 33	4.224	6 25 0° 13' R	N 5° 47' E	N 5 20 E	- 22° 0' 4.587 ●
50.103 32 ✓	4.373	1 40 50' R	N 5° 34' E	N 5 1/4 E	- 10° 33' 4.448
45.730 31	1.079	0 34 0° 17' R	N 4 1/4 E	N 4 1/2 E	
30	5.907	3 9 1° 34' R	N 4° 27' E	N 4° E	28° 26' 4.018 - 32° 25' 2.812
58.744 29	1.046	2 27 1° 19' R	N 2° 53' E	N 2 1/2 E	- 26° 30' 1.169
37.695 28	1.341	1 16 0° 8' R	N 1° 34' E	N 1° 10' E	- 6° 57' 1.351 ●
27 36.357			N 1° 26' E		

Sub	C/75	L	CC	MC	Slope
77.530 43	1.902				
		13° 25', 6 42 L	N 0° 40' W	N 3/4 W	-36° 18' 2.360
77.628 42	.677				
		6 36, 5° 18' R	N 6° 02' E	N 5° 10' E	-29° 20' .776
41	1.074				
		0° 14' 0° 7' R	N 2° 44' E	N 2 1/2 E	
75.877 40	1.139				
		2 6	N 2° 37' E	N 2 1/2 E	+21° 0' 1.223
39	2.665				
		1° 3' L	N 3° 40' E	N 3 1/2 E	+32° 5' 3.120
38					
		1 34 0° 47' R			
77.073					
			N 2° 53' E		

2 53

$$\begin{array}{r} 47 \\ \underline{3} \quad 40 \\ 1 \quad 3 \\ 2 \quad 37 \\ 2 \quad 34 \\ 2 \quad 32 \\ 2 \quad 30 \\ 2 \quad 28 \\ 2 \quad 26 \\ 2 \quad 24 \\ 2 \quad 22 \\ 2 \quad 20 \end{array}$$

$$\begin{array}{r} 1 \quad 3 \\ 6 \quad 47 \\ 3 \quad 18 \\ 7 \quad 45 \\ 4 \quad 12 \\ 3 \quad 33 \\ 2 \quad 33 \\ \hline 40 \end{array}$$

80593

80593

87178

87178

$$\begin{array}{r} 230 \\ \underline{483559} \\ 241779 \\ 161186 \\ \hline 190199 \end{array}$$

$$\begin{array}{r} 776 \\ \underline{523068} \\ 610246 \\ \hline 676501 \end{array}$$

93137

85416

93137

85416

$$\begin{array}{r} 342 \\ \underline{1024992} \\ 206240 \\ \hline 2164979 \end{array}$$

$$\begin{array}{r} 1223 \\ \underline{279611} \\ 271 \\ 111 \quad 7644 \\ \hline 1189065 \end{array}$$

Hub	Chs.	L	CC	MC	Slope
28.180 53	3.037	5 32 2° 46' L	589° 22' W	W	5° 30' 3.051
5.443 54	2.713	5 12 2° 36' R	N 87° 52' W	N 88° 40'	+30° 4' 3.135
22.730 57	5.932	7 12 0° 36' L	589° 32' W	589 1/2 W	26° 10' 3.040 -28° 40' 3.600
16.798 50	.828	1 20 0° 39' L	N 89° 52' W	W	-19° 30' 879
15.970 49	4.751	3° 23' 1 44' R	N 89° 13' W	W	-5° 10' 4.770 1° 23' 2.000
11.219 48	2.465	0° 18' 0° 9' L	589° 51' W	588 3/4 W	+9° 34' 2.500
8.757 47	2.203	2 51 1° 26' L	589° 44' W	589 1/4 W	-3° 0' 2.206
46	3.266	4 4 0° 21' L	N 89° 20' W	N 89 3/4 W	-4° 45' 3.277
45	1.139	1 15 0° 38' R	N 88° 59' W	N 89 3/4 W	
3.285	2.146	179 21 89° 44' L	89° 37' W	N 89° 18' W	+39° 0' 2.761
44			N 0° 7' E		

See Cor 1/17/79

42			✓		
43	1.064	37°13' L	✓	S 0°25' E	
58	808	54°50' L	✓	S 33°48' W	S 33°4' W + 33°40' 1.278
41.592	808	7°2' 3'31" L		S 88°38' W	S 88°30' W + 20°30' 865
40.78A 57	731	105° R		N 87°51' W	N 88° W + 28°20' 830
52	5807	2°35' 10'18" R		N 88°56' W	N 88°34' W - 410°0' L 1.314 - 25°30' 5.000
40.023	5719	3°31' 1°46" R		S 89°46' W	S 89°46' W - 27°25' L 1.181 - 35°30' 5.000
55	647	2°44' 1°22" L		S 88°0' W	S 87°2' W - 32°21'3" 2765
54				S 89°22' W	
49.124					
53					
8480					

1145¹/₁₂

60

1.209

✓
N 77° 23' W N 78° W -18° 30' 1275

59

0° 58'
0° 29' R

971

N 77° 52' W N 79° W -6° 40' 978

58

2659'
13° 30' R

588° 38' W

1/4 Cor. Identified from fir which I believe to be the OBT.

Scribe marks burned off but blaze with characteristics of burning tree found. no other tree or stump. BTs makes corner on blazed line E & W.

14 Hemlock N 32° E 88 lbs. 1451 CSBT.

42 Fir S 5° W 18 lbs. 14612 CSBT.

Sandstone 4 x 6 x 20

13 59
88 35
129 62
102 37
77 23

94832
978

794592

695268

893916

97138372

94832

94832
1275

474160

663824

113794

120710000

99324

8535

3 210

828

75

40' 3300
-98 5000

12.15

6.328

W

N 54° W

1.309

1/2 Sec 147

8° 11' L

115

5.000

6.273

83° 51' L

N 31° 43' W

N 81° 2' W

1.290

L

5.000

9

N 2° 8' E

DEC-61

S 15° 32' E

S 18° 14' E

4.000

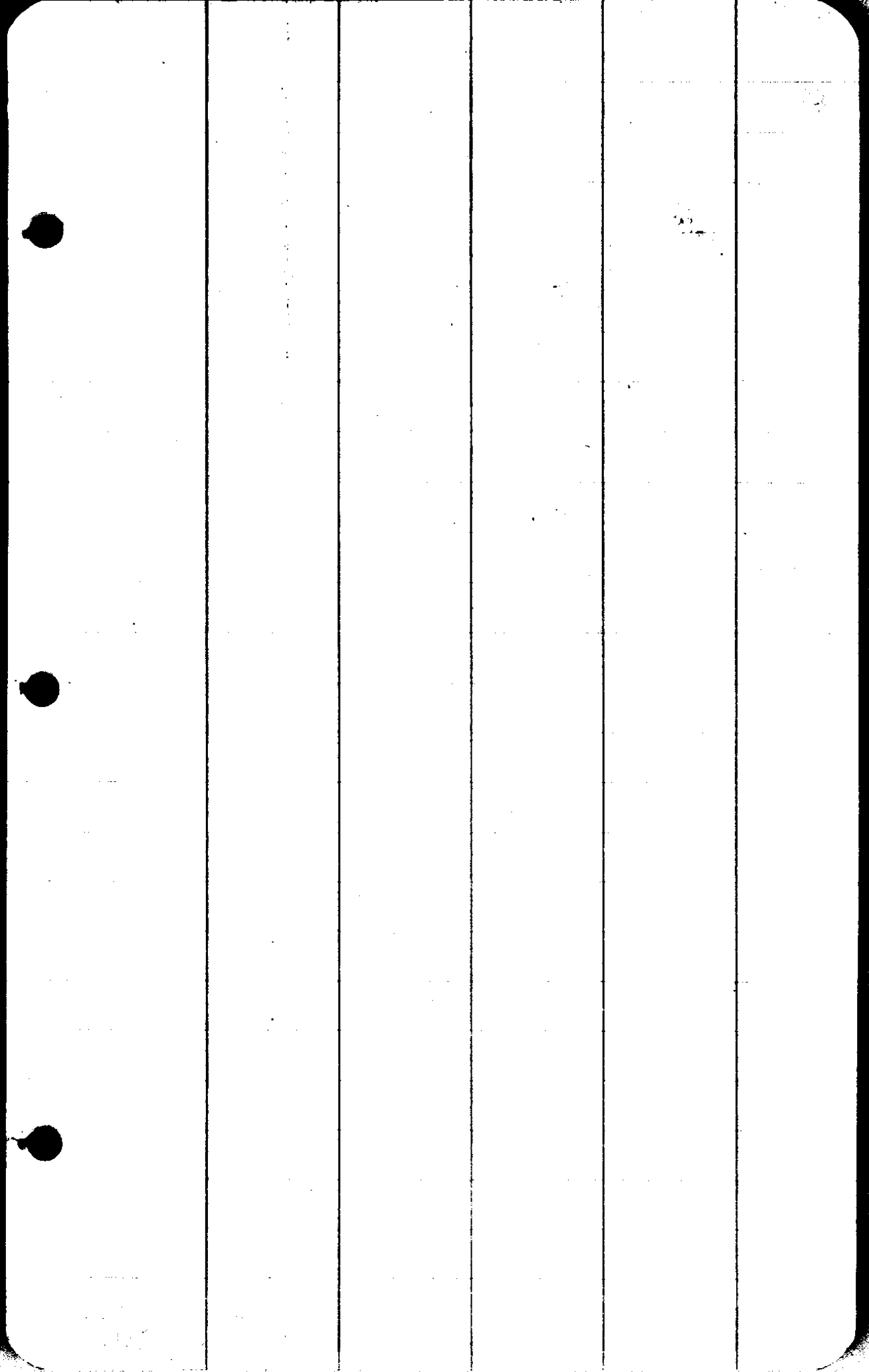
-490'

9

157° 20' R

N 3° 8' E

10



Year	PLA	Cos	N	S	Sub	L	W
1	18551	6273	4444 672	39200	99424		776 6220 7316
1946				22000			

51027W 38.675-7 98340

18140

18140
18140
18140



1938

1938

1938

1938

1938

1938

1938

1938

1938

1938

1938

1938

1938

1938

1938

1938

1938

1938

1938

1938

1938

1938

1938

1938

1938

1938

1938

1938

C. S. File No. 14/38

14-38

CS FILE FOLDER

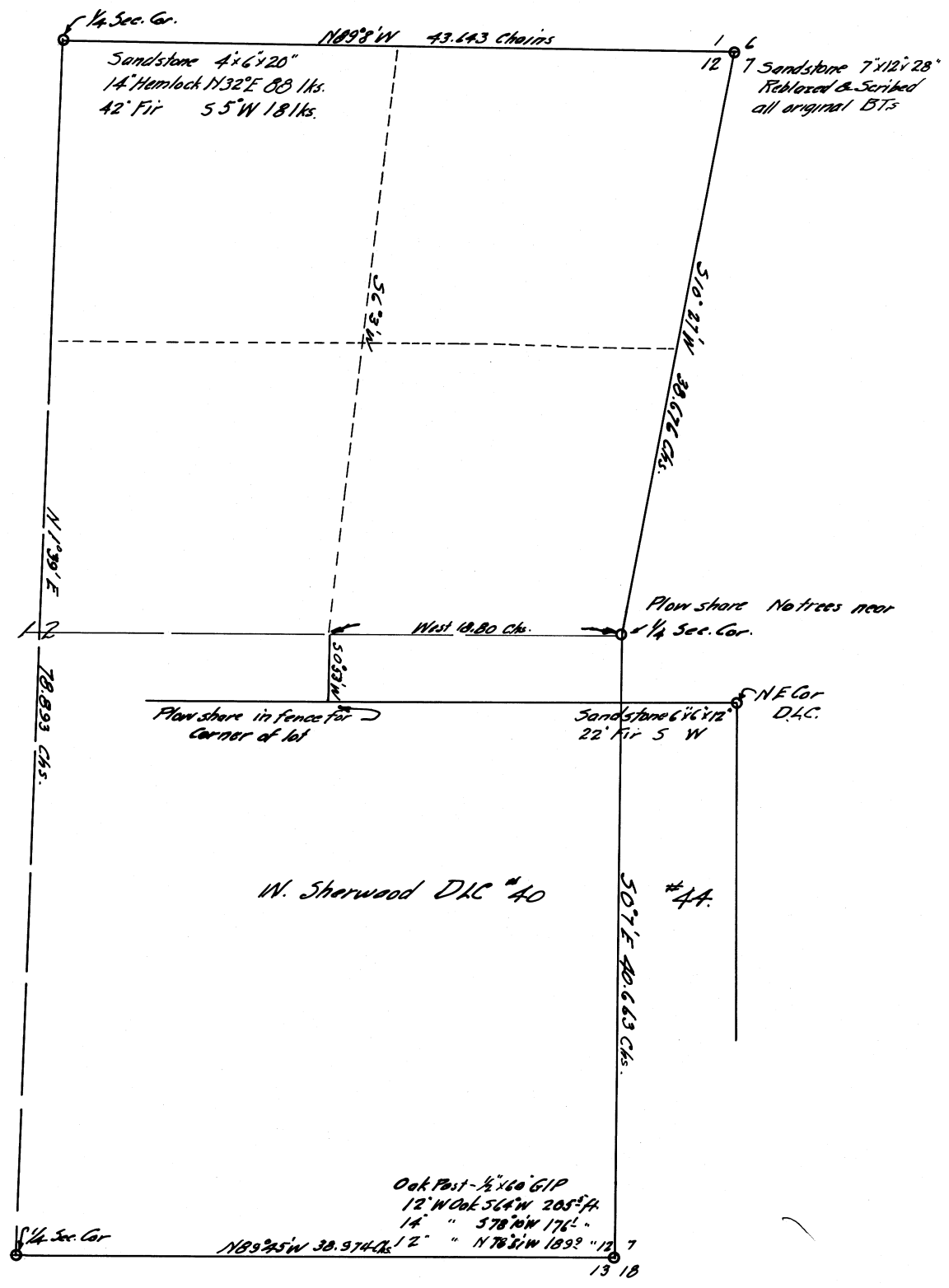
CONTAINS

MORE

INFORMATION

L-9 W
8E/41'S 0

COUNTY SURVEYORS FILE DATA
DO NOT REMOVE FROM OFFICE



Sandstone 4x6x20"
14' Hemlock N32°E 88 lks.
42' Fir 55°W 18 lks.

7 Sandstone 7x12x28'
Reblazed & Scribbled
all original B.T.s

Plow share in fence for
corner of lot

Plow share No trees near
1/4 Sec. Cor.

W. Sherwood D.A.C. #40

#4A.

Oak Post - 1/2 x 60 GIP
12' W Co. E. 56° W 205° 44'
14' " 578° 10' W 176° "

EAST HALF OF
SECTION 12 T 225 R 8 W
as surveyed by
BEN. B. IRVING DEPUTY COUNTY SURVEYOR
November and December 1929

SCALE 1 inch = 6 chains

Drawer 55

Vol 4 Pg 4
C.S. FILE 14/38
M 6-7