

AMENDED
PLAT

OF

BLOCKS G-H
LAURELWOOD ADDITION

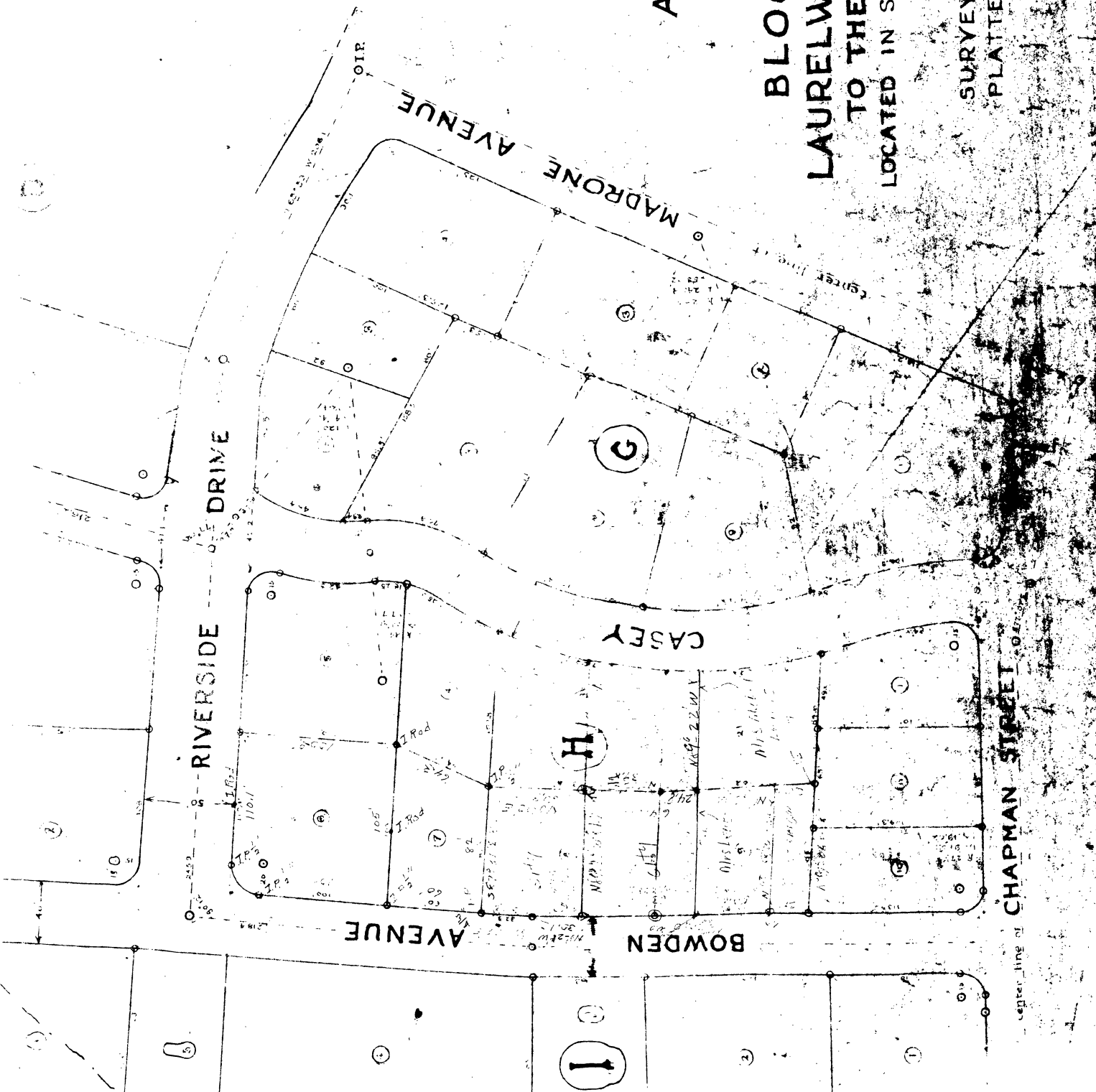
TO THE CITY OF ROSEBURG

LOCATED IN SEC. 13 & 24 T. 27 S. R. 6 W W

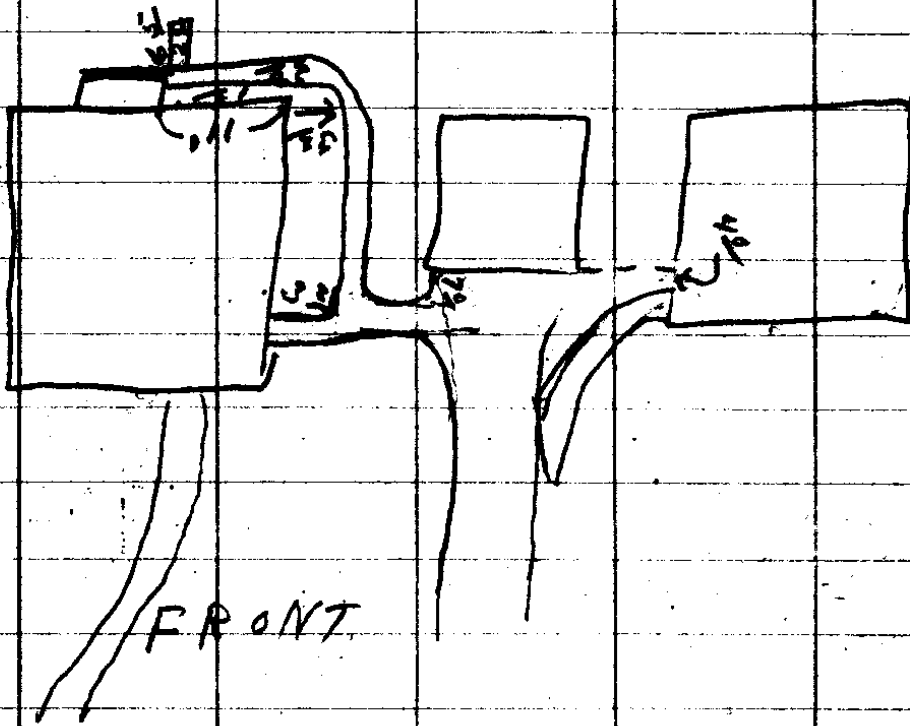
1925

SURVEYED BY H. L. ERPSTEIN
PLATTED BY FRANK E. ALLEY

SCALE - 1" = 60'



center line of CHAPMAN STREET



CS FILE FOLDER

CONTAINS

MORE

INFORMATION