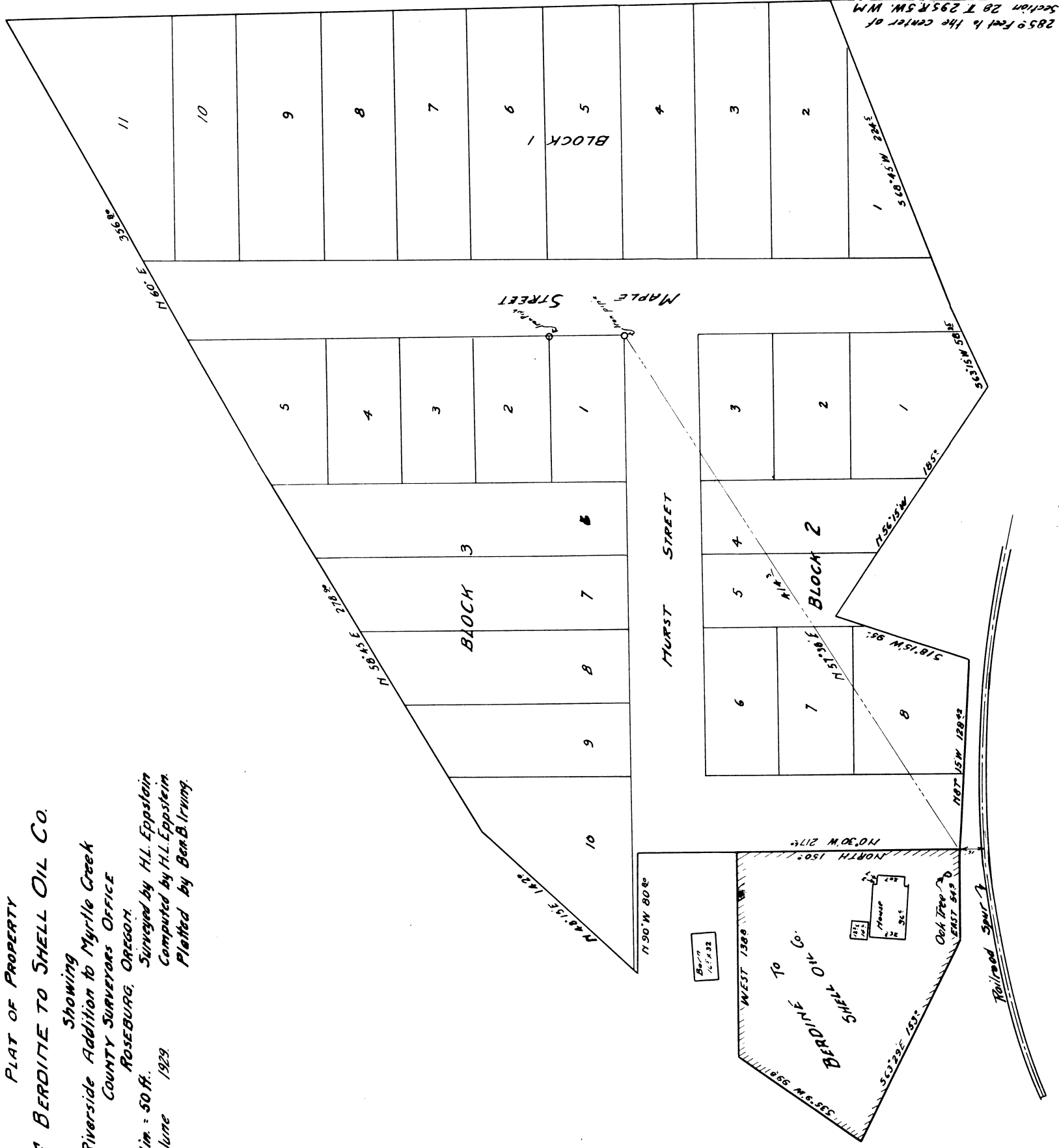


PLAT OF PROPERTY  
 W<sup>M</sup> BERDINE TO SHELL OIL CO.

Showing  
 Riverside Addition to Myrtle Creek  
 COUNTY SURVEYORS OFFICE  
 ROSEBURG, OREGON. Surveyed by H.L. Eppstein  
 Computed by H.L. Eppstein  
 Platted by Ben B. Irving.  
 Scale: 1 in. = 50 ft.  
 Date: June 1929.



2850 Feet to the center of  
 Section 28 T 29 S R 5 W W M

14-15

○ NW corner  
2" iron pipe. replace  
12 B.O. N30E 6.8 ft

Back sight on west line of st.

4 South of Ark  
20 " " "  
4 North of South East  
30 East " " 4 North

32 Mark to NE Cor.

NW is shed at house

SE Cor barn

SE Cor small house 40 ft.

SW Cor barn

on line west side S & W

25 West of NW Cor

1/2 way between NW Cor & S.W.

25 feet west.

10 South SW Cor

20 " " "

50 S 69° W from SW Cor

15 South of Pressure

25 " " "

Location on line 1.15 from SW Cor

15 South of hand

25 " " "

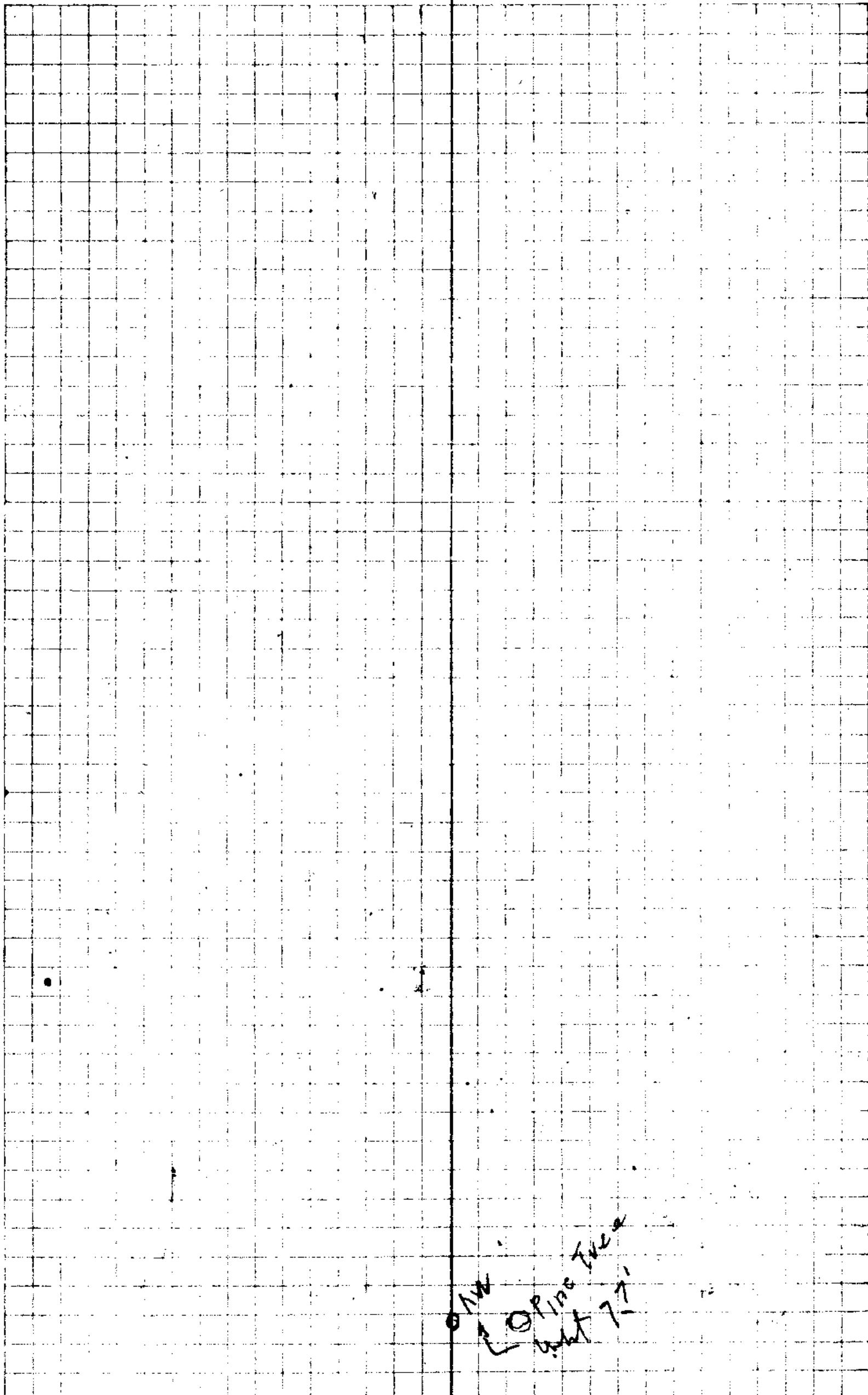
50 S 69° W from SW Cor

50 North of Pressure

located from NE Cor.

located from SW Cor

14/15



AW  
L O PING THE  
W 77

15





1941

1942

1943

1944

1945

1946

1947

1948

1949

1950

1951

1952

1953

1954

1955

1956

1957

1958

1959

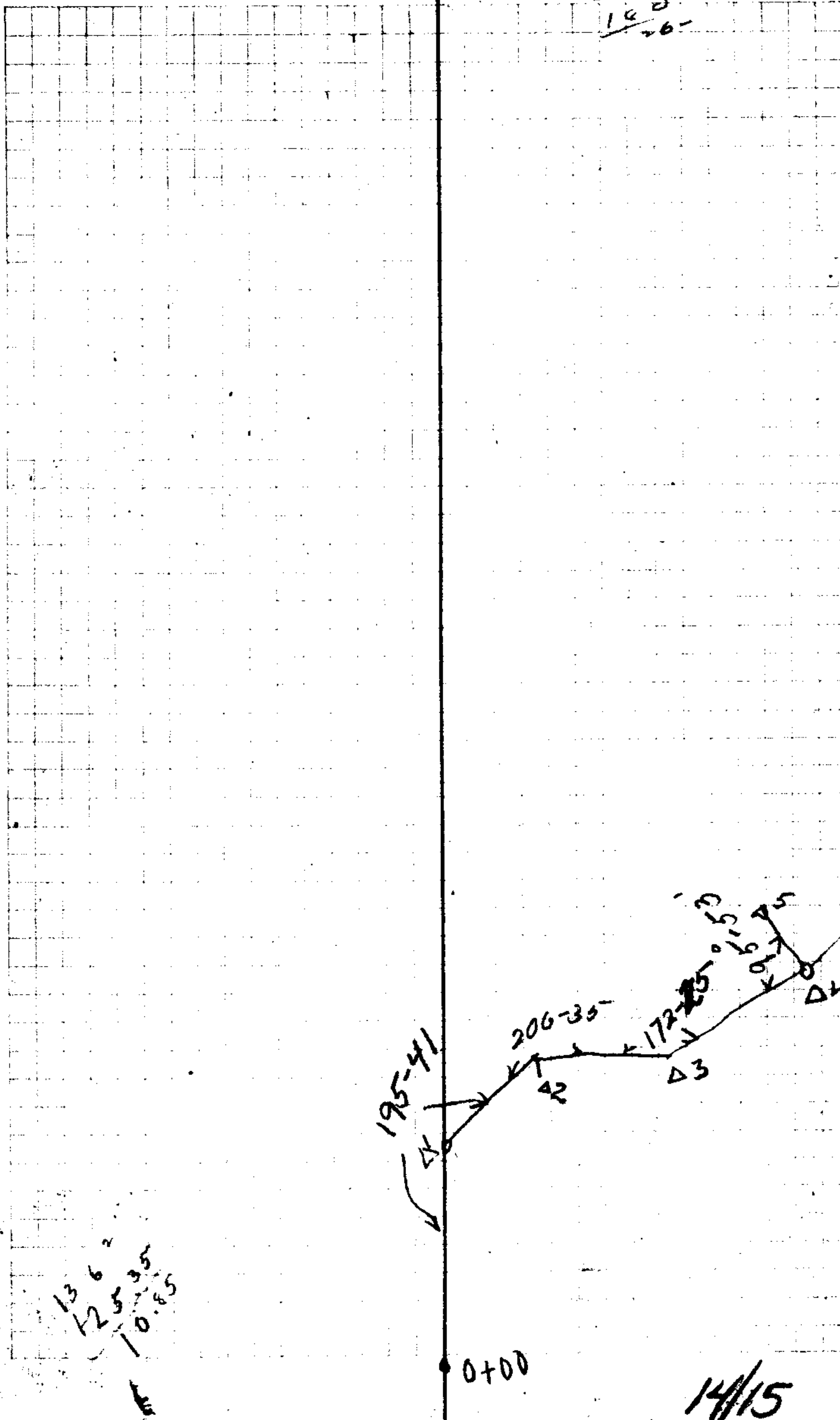
1960

1961

1962

14/15

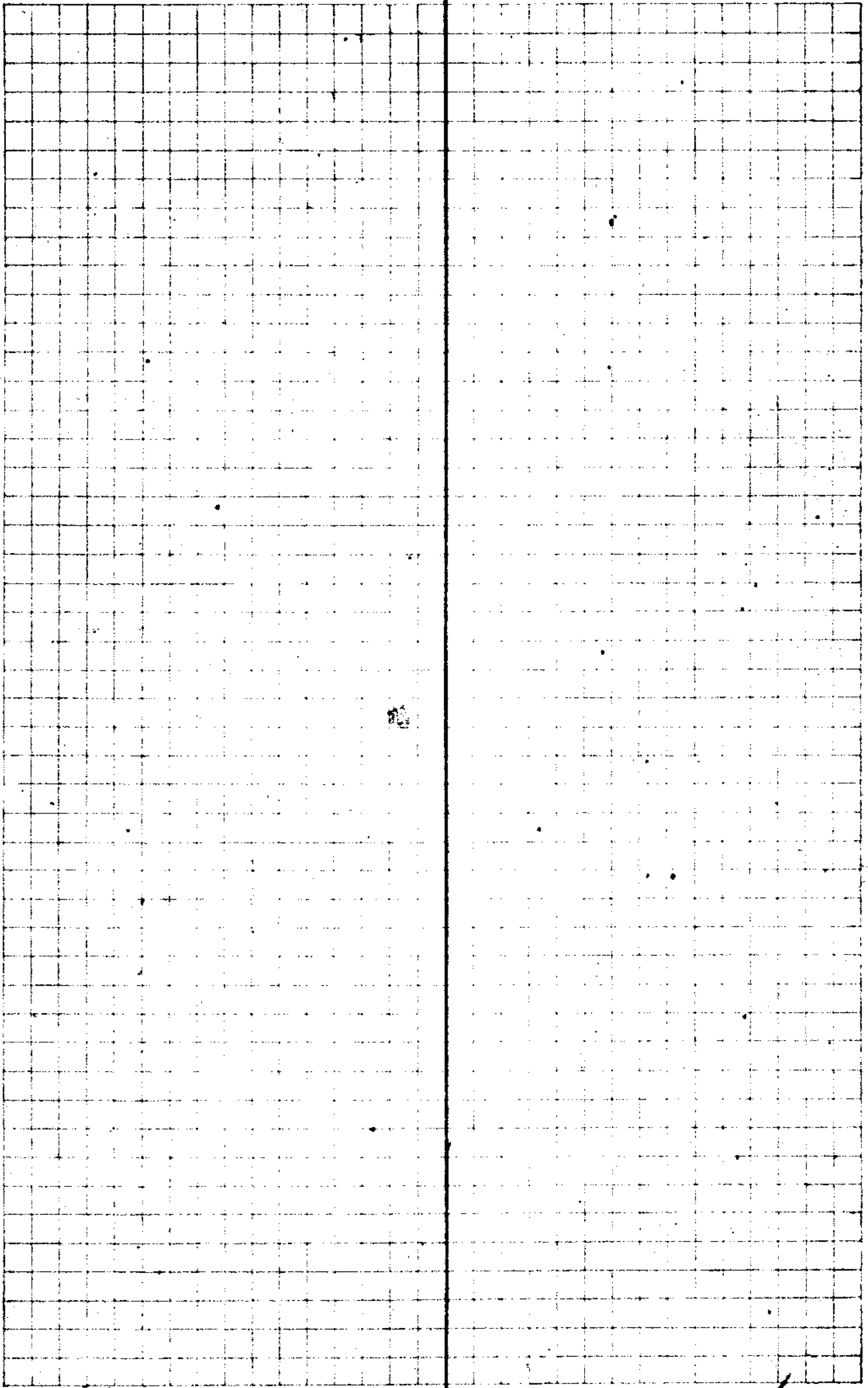
206  
140  
-6-



13  
125  
10.85

0+00

14/15



14/15

614.43 T 22 N

P.I.  
347+822

346+862

345+612

344+642

343+372

CORN FIELD

341+676  
B.C.

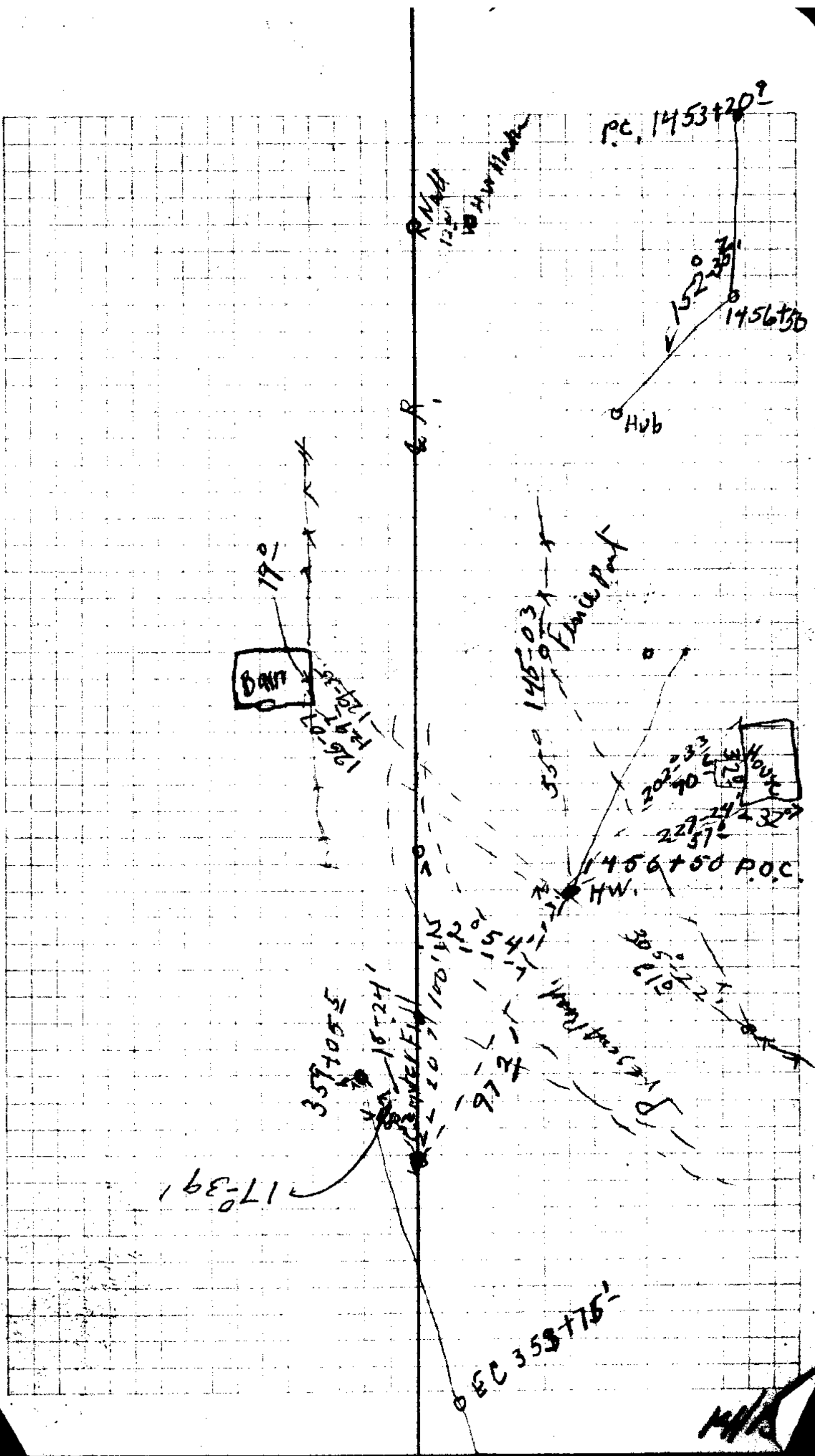
FENCE

x x x x x

14/15

Road





P.C. 1453+20'

R.A.A.  
125'  
H.W. Marker

152°35'  
1456+50

HUB

17°  
D.M.  
129°35'  
129°35'

145°03'  
55°  
Fence post

202°33'  
229°24'  
232°  
1456+50 P.O.C.  
H.W.

357+055  
165°24'  
W.C. WELLS

100°15'  
120°  
154°  
97°3'

305°12'  
210°22'

17°39'

EC 353+75'

M/A

CS FILE FOLDER

CONTAINS

MORE

INFORMATION