

W. Busch Survey

and Sec 6 - 9/30
31 - 9/29

W. Busch Survey } Sec 6. 9-30 June 5, 6
 Line ran bet. 6 & 31 E & W } " 31 9-29 1928
 A Boyer
 R Church.

Sta	Dist	Δ	Brg	
6+00.2			East	Top Ridge
	75			
5+25.7				
	113.5	117 27 140		Top Ridge
4+11.7				
	53.5		East	
3+58.2				
	105.3			
2+52.9				
	82.6			
1+70.3				
	73.8			
+96.5				
	96.5		Dec 19° 30'	
			East	
0+0				SW Cor 31 as shown on sketch →

Note The purpose of this survey is to determine the E. line SW 1/4 SW 1/4 31 9/29 bet Busch & Lee Goodman. Busch could not afford a complete survey so a needle line was run bet Sec's 6 9/4 31 9/4 on the E line SW 1/4 SW 1/4 31, blazed trees were found for the entire 1/2 mi on the E. line SW 1/4 SW 1/4 31 - US GLO Dist for distance bet SW Cor 31 (Sta. 0+0 this survey) 9nd S 1/4 Cor 31 is 41.8 ch = 2758.8' ÷ 2 = 1379.4'

011 25°S

S¹/₄ Cor 31
41.8 chs.
← EAST

Found
S. W. Cor 31 = 0+0.
Marked Stone in
Place -
Starting Point - Ran
E. from here on
S. Line 31

2 chs.

2.08 chs.

Found Marked Stone

North
↓
South

Found
marked Stone
This is only
point found
to get start
Survey made
to find points
2.08 ch E + 2 ch
South

② W. Busch Survey Cont'd
 Sec 6-9/30⁹ and 31-9/29
 Line ran W to E bet 6+31

6/6/28

Sta	Dist	Brg	
13+79.4	18.1		} set Pbst for SE Cor SW & SW ⁴ Sec 31
1361.3	11.5		
1349.8	49.8	EAST	
1300+05	74.8		
(12+50 Creek)	76 on 10°		
12+24 ^{5.7}	141.		Blazed Cedar 6'S. Just above CK
10+83 ^{4.7}	95.7		
9+89 ^{7.5}	116.0		
8+73 ^{15.15}	78.5		
7+945	194.3		
6+002		EAST	Top Ridge Descend Here

A. Boyer
F. Church

14-3

(2)

Run N. from here on E Line SW⁹SW⁴31
See Sheet 3

C. S. File No. 14/3

③ on Sta	W. Busch Survey E. Line SW 1/4 SW 1/4 31-79S., R29W	Dist	Brg	June, 6, 7-1928	
		36.8			
9+80		133 on 5° 132.5'	North		
8+47.5		51.5			
7+96		175 on 2 1/2° 174.8			
6+80 creek					
6+21.20		157 on 10° 154.6			
4+66.6		119.5 on 6 1/2° 118.7	North		AM 7th
3+41.9		27.5	level		
3+14.4		44.7	level		
2+69.7		60.5	level shot		
2+09.2		95 on 7° 98.2			
1+11		112.7 on 10° 111.0	North	def= 19° 15'	
0+0					SE Cor SW 1/4 SW 1/4 31

9+00 CK Branch (Goodman Cr)

7+41 = Blazed tree

4+00 Blazed tree (old blaze) on line

3+82 Blazed Tree (old blaze) to left (abt 2.1)

Tree blazed on 4 sides abt 75' N. of 0+0 on
N+S line

(A)

14-3

June 7/1928

M. Busch Survey

Sec 6, 9/30 ^{9/14} 31 9/29

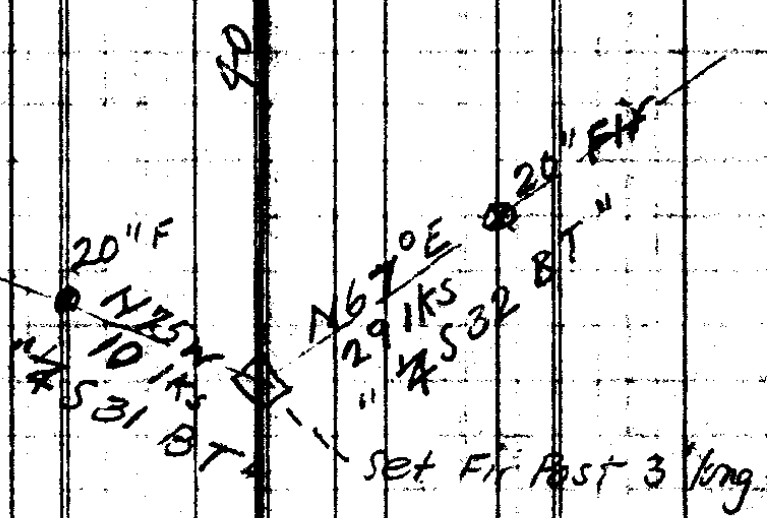
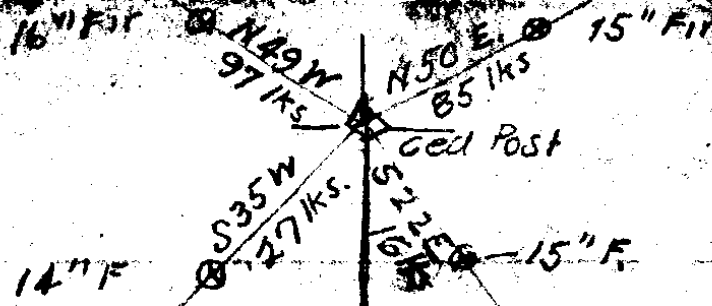
A Boyer
F. Church

on E Line SW & SW 4, 31

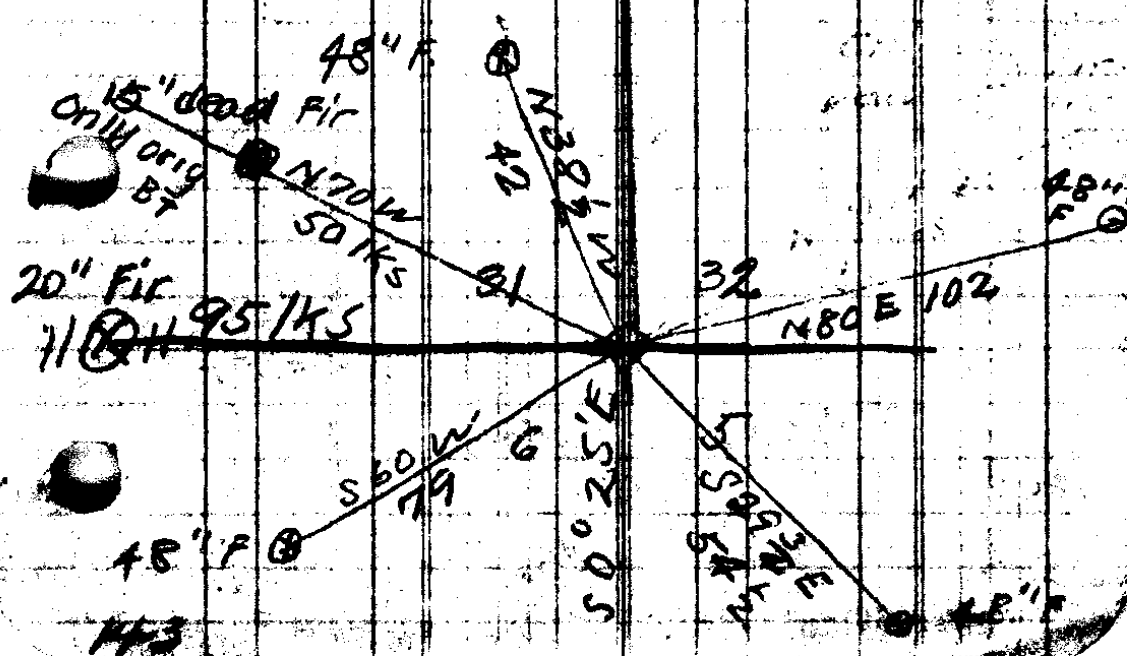
between Busch + Goodman

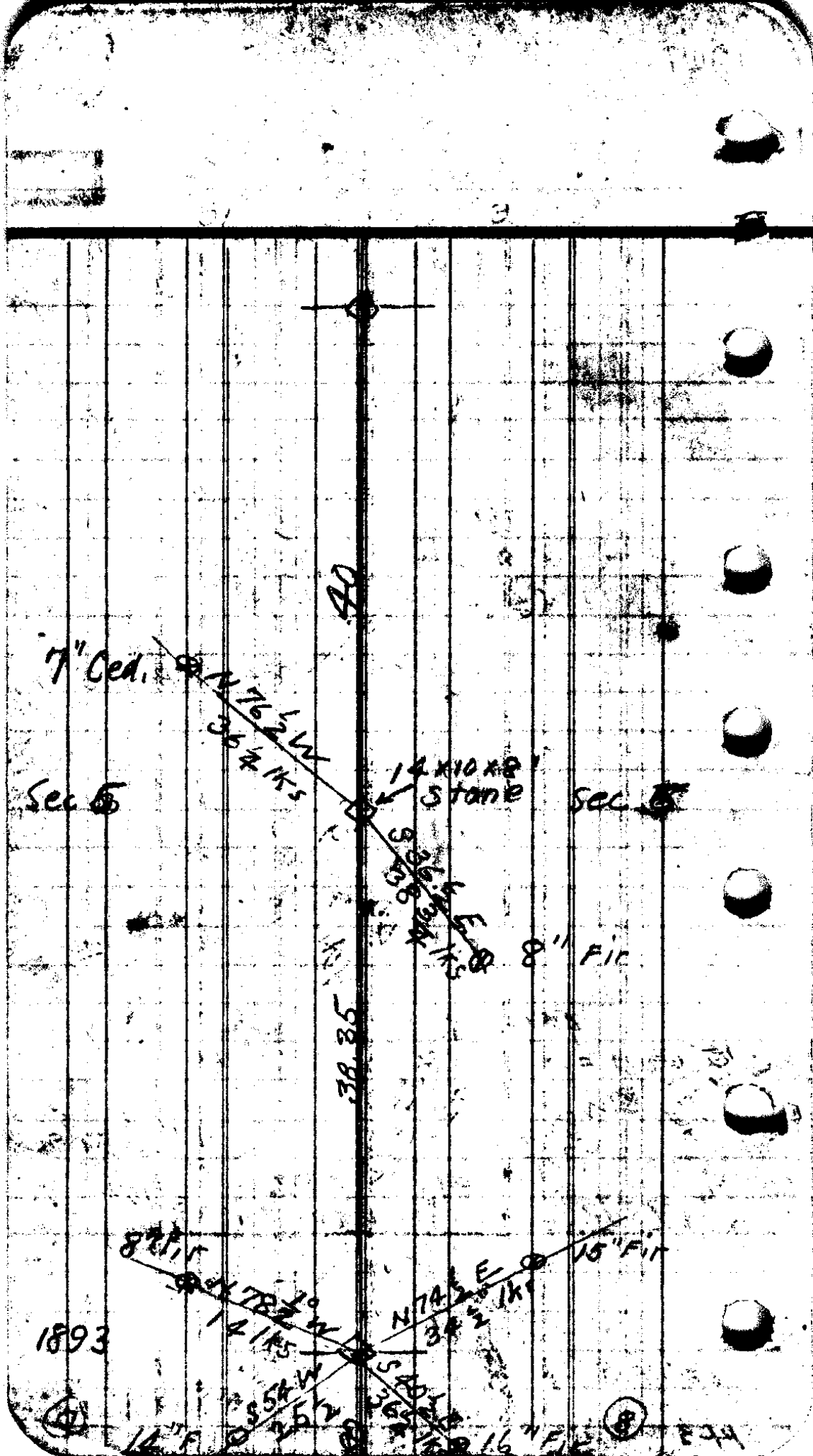
<u>Sta</u>	<u>Dist</u>	<u>Brg.</u>
1320+00	Set Post For $\frac{1}{16}$ ^{1/3} Cor NE: Cor SW SW 31	North
1245+00		Blazed Tree
1225+00		Blazed Tree
11+85.5	169 on $\frac{1}{32}$ 168.7	
10+16.8		

1907

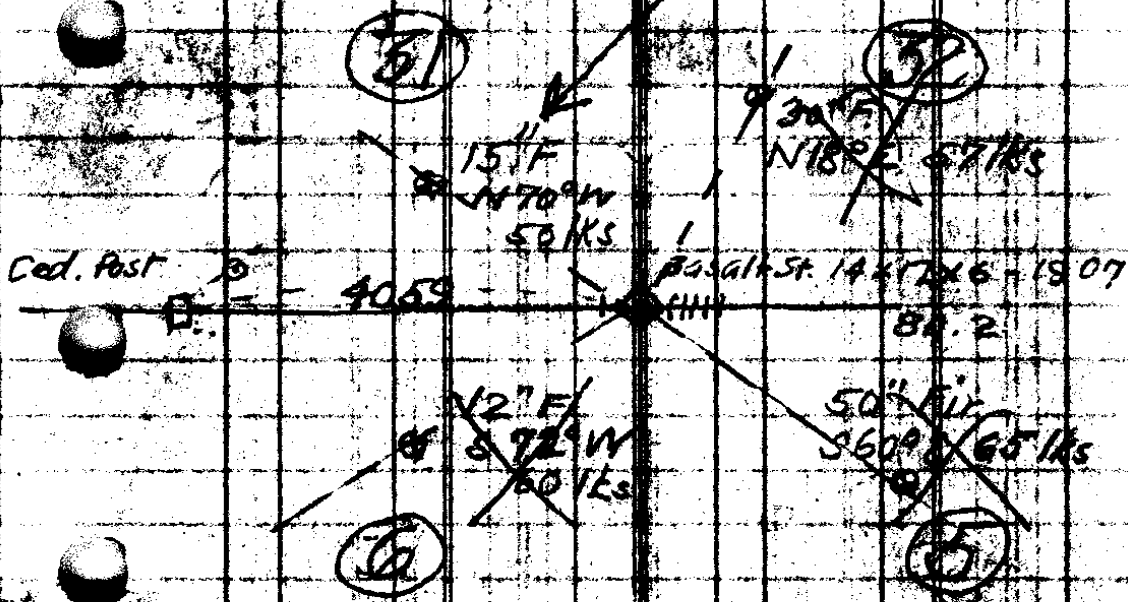


90
 40
 Var = 19°
 1893





All destroyed but



Old WTs - Est'd 1855 or 1907

Secs 5, 6 - 31, 32

50" F, S60°E, 65 Ks

30" " N120°E, 57 "

15" " N70°W, 50 "

12" " S72°W, 60 "

WTs - S 1/2 Cor 31 1907

Ced Post 3' by 4" x 4" mark 1/2 Sec 31 & 6

Old WT - 48" F, N45°E, 66 Ks, mark 1/2 S31

New " 50" Ced, S25°W, 81 Ks mark 1/2 S1-BT BT

W.S.