

# DOUGLAS COUNTY HIGHWAY IMPROVEMENT

## PROFILE & ALIGNMENT OF RELOCATED

### PUBLIC HIGHWAY AROUND PARKER GRADE

Sec. 30 - T. 30 S. - R. 2 W. - W. M.

Sta. 0+00 to Sta. 14+00

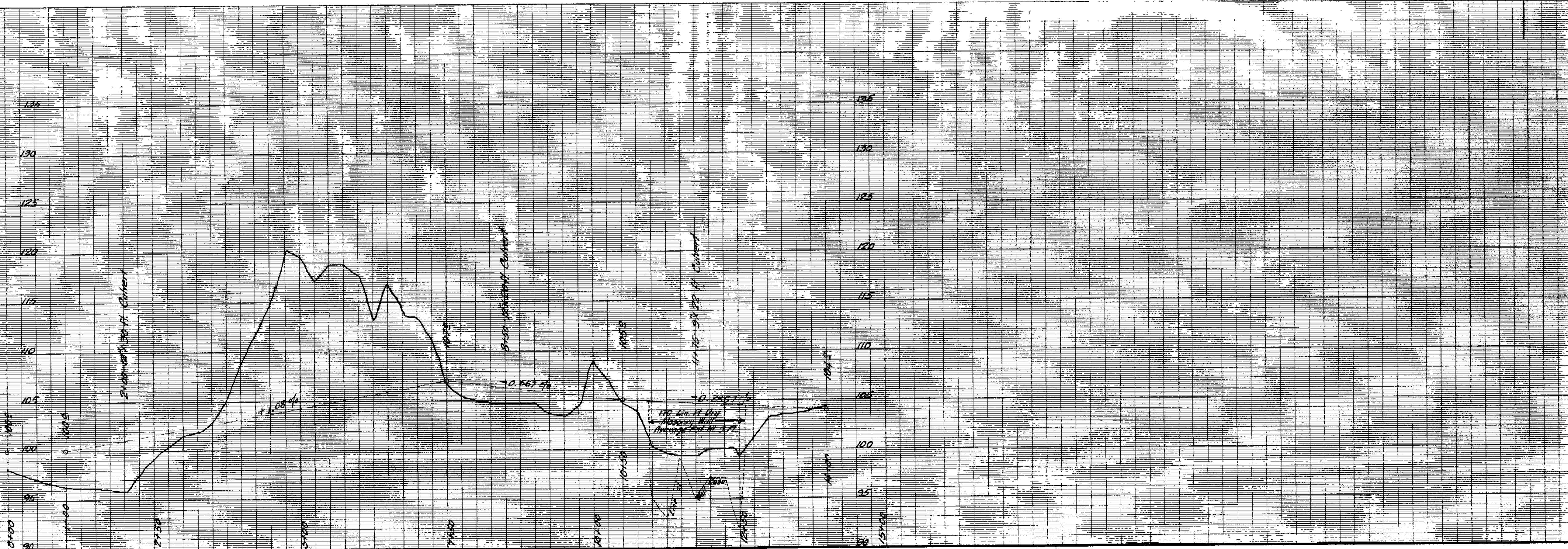
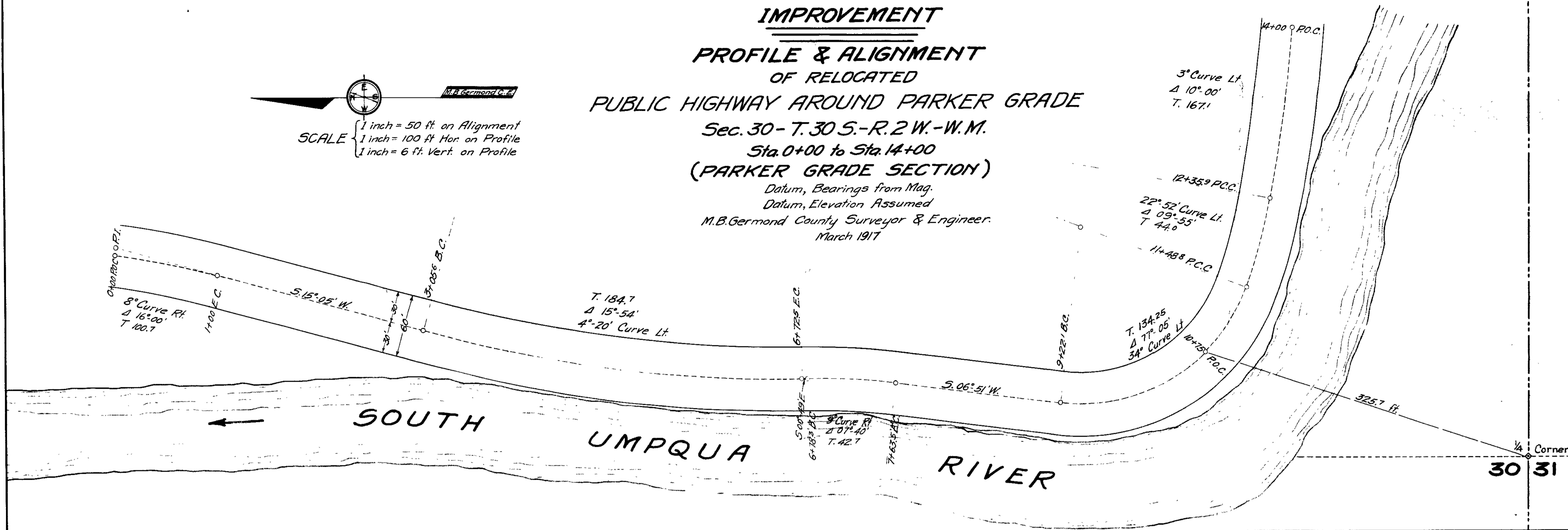
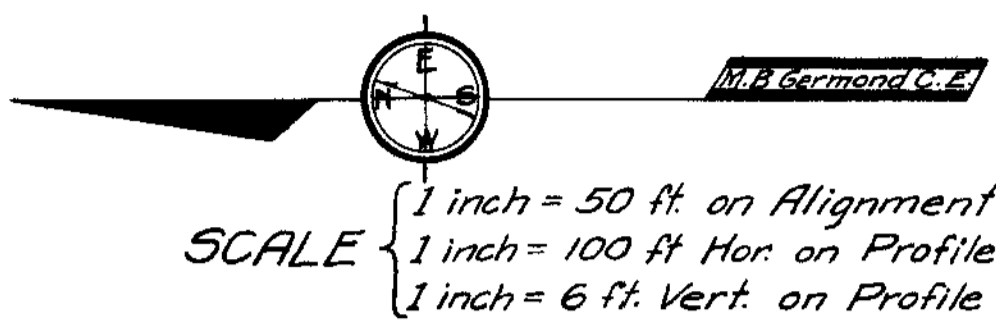
### (PARKER GRADE SECTION)

Datum, Bearings from Mag.

Datum, Elevation Assumed

M.B. Germond County Surveyor & Engineer.

March 1917



THE FREDERICK POST CO.  
"Profiled Profile Plate B"