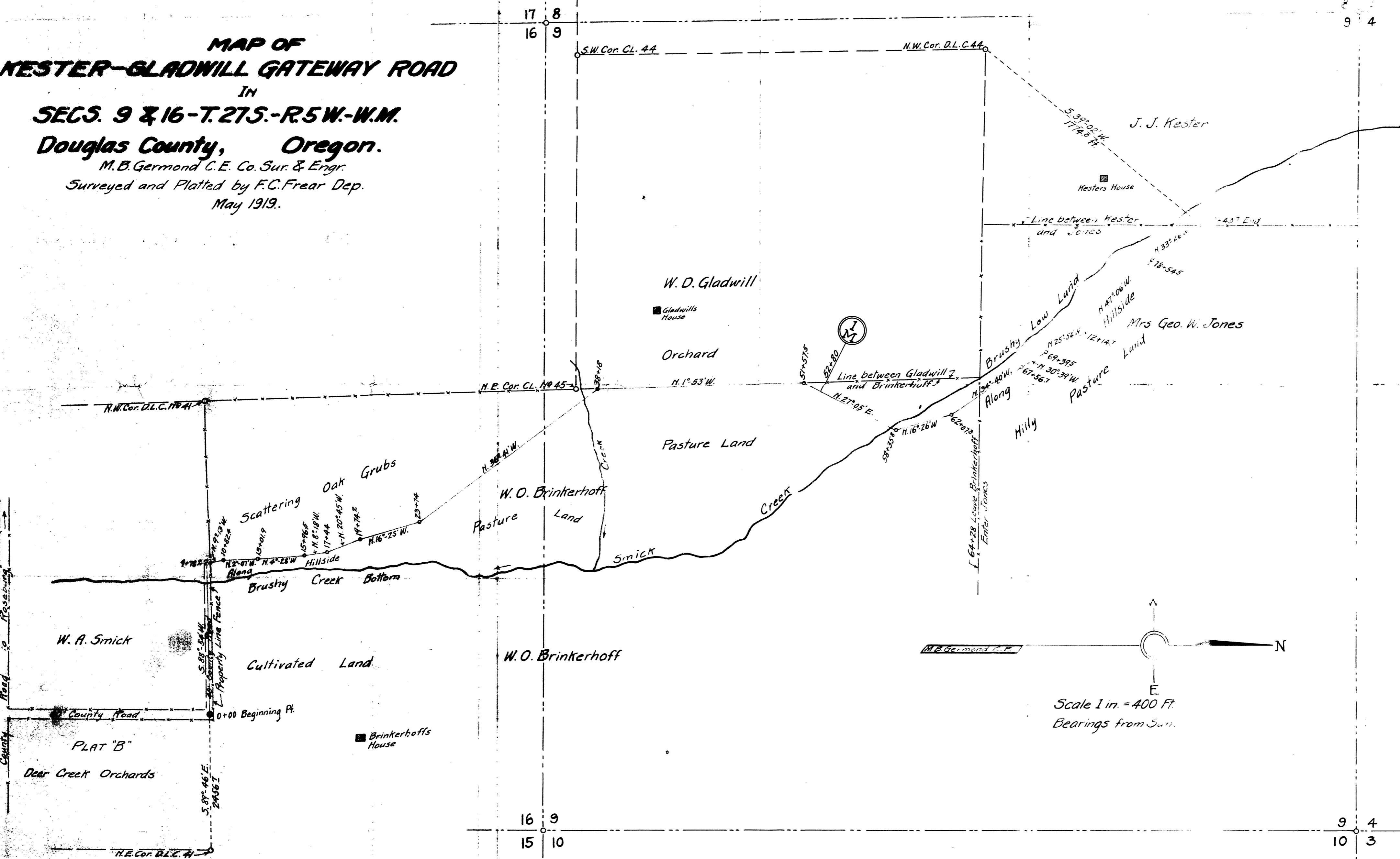


**MAP OF
NESTER-GLADWILL GATEWAY ROAD**

**IN
SECS. 9 & 16-T.27S.-R.5W.-W.M.**

Douglas County, Oregon.

M. B. Germond C.E. Co. Sur. & Engr.
Surveyed and Platted by F.C. Frear Dep.
May 1919.



Scale 1 in. = 400 FT.
Bearings from Sun.