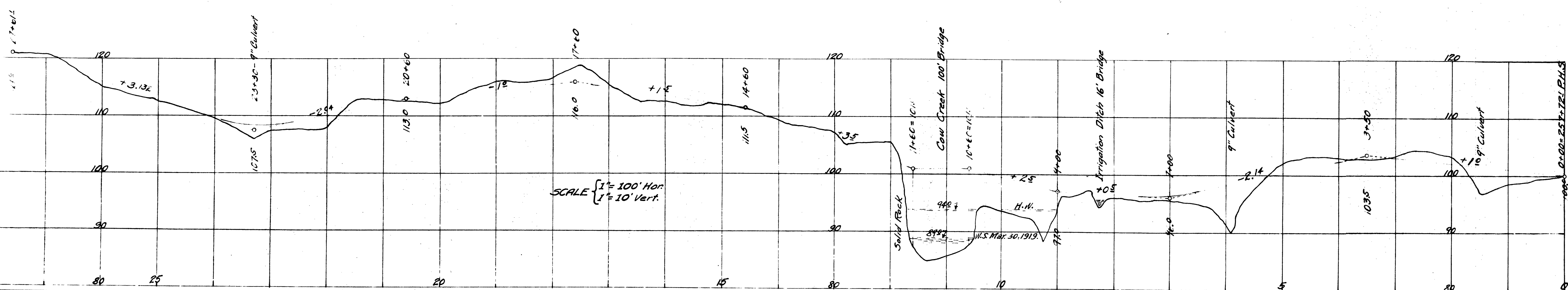
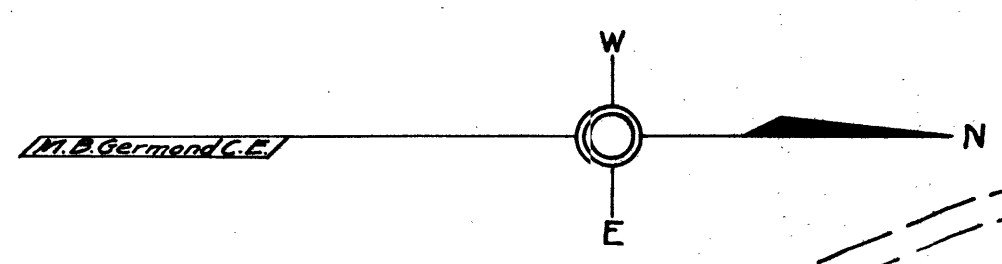
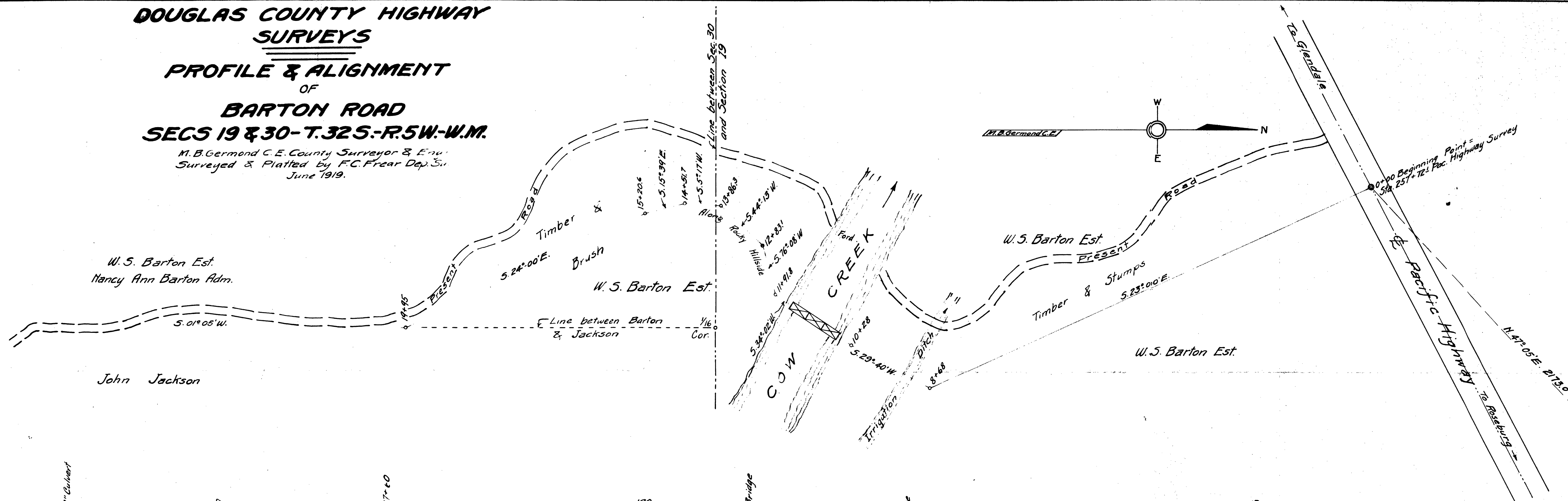


DOUGLAS COUNTY HIGHWAY SURVEYS

PROFILE & ALIGNMENT OF BARTON ROAD SECS 19 & 30-T.32S.-R.5W.-W.M.

M. B. Germond C.E. County Surveyor & Eng.
 Surveyed & Platted by F.C. Frear Dep. Sur.
 June 1919.

27+61.1 End Sur. = 1/16 Sec Cor
 S.W. Cor N.E. 1/4 N.E. 1/4 Sec. 30



NOTE - Elevation Assumed
 Bearings from Needle

19
 1/4 Cor.
 20